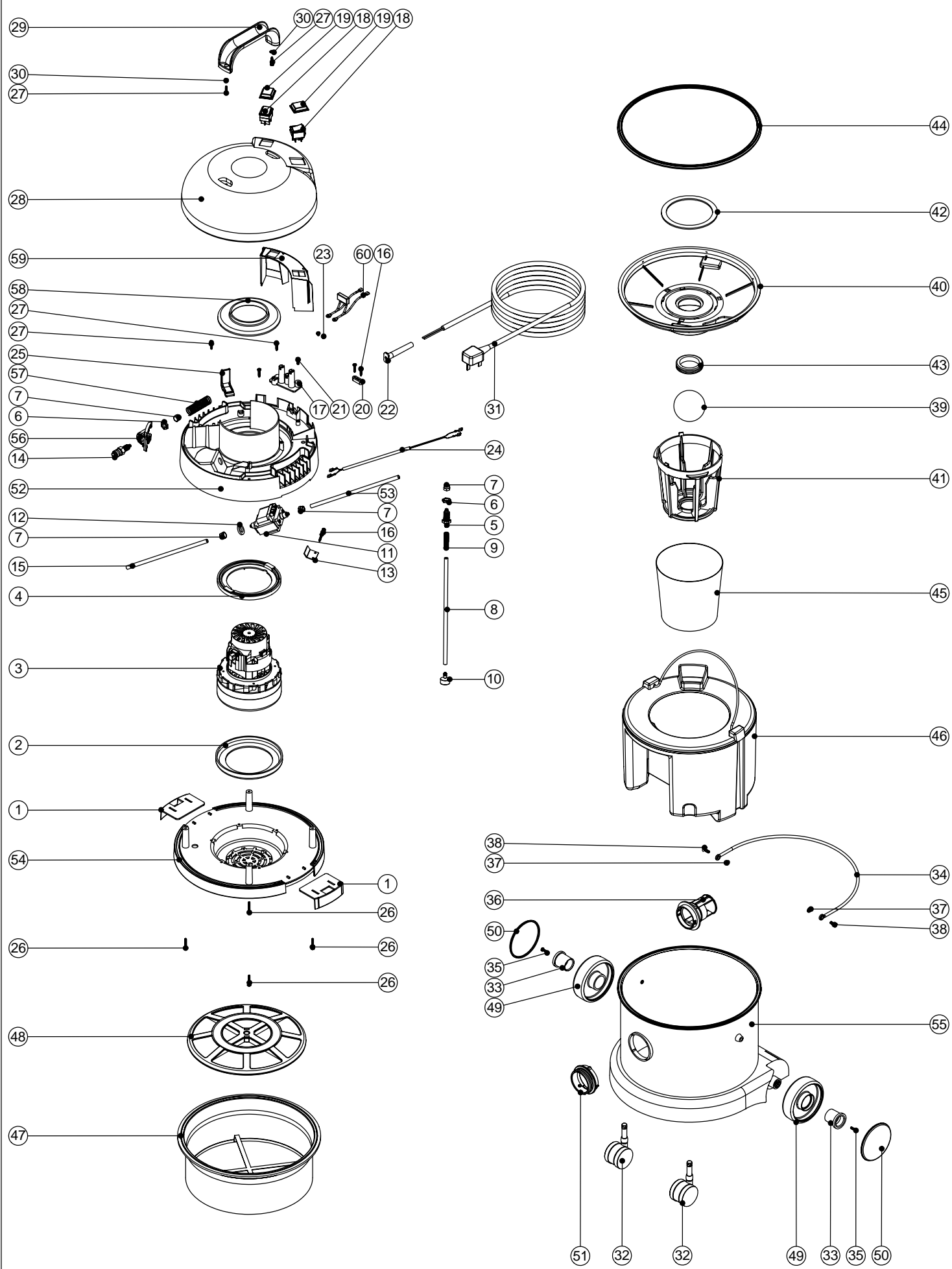


Numatic International Spare Parts

Model No: GVE 370-2 EXPLODED DRAWING

234302
DRAWING: EXP-0733 ISS:A07
14/08/2007



Numatic International Spare Parts

Model No: GVE 370-2 EXPLODED DRAWING

POS:	ITEM NO:	DESCRIPTION:	COMMENTS:
1	227115	TOGGLE	
2	202031	BOTTOM MOTOR GASKET	
3	205443	240V 2 STAGE D.I BYPASS ACUSTEK MOTOR (BL21104T) (MARKED 230V) TCO	
	205442	220V 2 STAGE D.I BYPASS ACUSTEK MOTOR (BL21102T)(MARKED 230V)TCO	
	205441	120V 2 STAGE D.I BYPASS ACUSTEK MOTOR (BL21101T)TCO	
4	227925	TOP MOTOR GASKET	
5	219380	BARBED TUBE FITTING	
6	219337	LOCKNUT	
7	219299	BLOCKING NUT	
8	227998	260MM LONG SOLUTION TUBE	
9	219281	TUBE SPRING	
10	502040	GAUZE FILTER ASSEMBLY	
11	216147	PUMP SMALL BORE 220/240V/50HZ	
	216146	PUMP SMALL BORE 110V/60HZ	
12	206208	SEALING WASHER	
13	303022	PUMP FIXING BRACKET	
14	216296	QUICK RELEASE BULK HEAD FITTING	
15	227814	215MM LONG SOLUTION TUBE	
16	219107	No6 X 5/8 INCH LONG POZI PAN PLASTITE SCREW	
17	220564	TERMINAL BLOCK MOULDING (2 INSERTS)	2 WIRE MACHINES
	220563	TERMINAL BLOCK MOULDING (3 INSERTS)	3 WIRE MACHINES
18	220843	BLUE ROCKER SWITCH	
19	206573	SWITCH COVER (PLUG HANDLE)	
20	227008	BLACK CABLE CLAMP	
21	219101	No8 X 1/2 INCH LONG POZI PAN PLASTITE SCREW	
22	220923	STRESS RELIEF	
23	219090	M4 X 8MM LONG POZI PAN SEMS SCREW	
24	321666	DIODE ASSEMBLY	
25	227019	CABLE HOOK	
26	219369	No8 X 1 INCH LONG POZI PAN STAINLESS STEEL PLASTITE SCREW	
27	219041	No8 X 3/4 INCH LONG POZI PAN SCREW	
28	227920	SWITCH COVER TOP	
29	206451	HANDLE	
30	219003	M5 FORM A STEEL WASHER	
31	236033	10.0M X 1.00MM X 2 CORE CABLE (UK PLUG)	
	236034	10.0M X 1.00MM X 2 CORE CABLE (EURO PLUG)	
	236049	10.0M X 1.50MM X 2 CORE CABLE (INDUSTRIAL PLUG)	
	236044	10.0M X 1.00MM X 2 CORE CABLE (AUSTRALIAN PLUG)	
	236047	10.0M X 0.75MM X 2CORE CABLE (SWISS PLUG)	
	236043	10.0M X 18AWG X 3 CORE YELLOW CABLE (CSA PLUG)	
32	204111	50MM TWIN WHEEL CASTOR WITH PU TYRE	
33	227011	BLACK WHEEL HUB CAP	
34	403039	BUCKET HANDLE	
35	219105	No8 X 5/8 INCH LONG POZI PAN PLASTITE SCREW	
36	206493	WET DRY CONNECTOR	
37	208026	BUCKET HANDLE SPACER	
38	219282	M5 X 16MM LONG POZI PAN COUNTERSUNK SCREW	
39	206026	POLYPROP BALL	
40	225087	FLOAT CAGE SUPPORT	
41	225086	FLOAT CAGE	
42	225083	FLOAT ASSEMBLY GASKET	
43	220235	FLOAT GROMMET	
44	207011	FLOAT CAGE GASKET	
45	207055	GAUZE FILTER	
46	227065	FLUID CONTAINER ASSEMBLY	
47	207109	12 INCH FILTER (DOUBLE BOTTOM) 160GRM SMS	INCLUDES ITEM 48 (209200)
48	209200	12 INCH FILTER GRID	
49	227640	2 SHOT WHEEL ASSEMBLY	
50	227638	BLACK PLAIN TRIM	
	227688	BLUE PLAIN TRIM	
	227687	RED PLAIN TRIM	
	227689	GREEN PLAIN TRIM	
	227690	YELLOW PLAIN TRIM	
51	227396	RED THREADED NECK	
	227397	BLUE THREADED NECK	
	227398	GREEN THREADED NECK	
	227399	YELLOW THREADED NECK	
52	325511	PROCESSED TOP MOTOR HOUSING (PRINTED WHITE GEORGE) (LAMB MOTOR)	
53	227995	235MM LONG SOLUTION TUBE	
54	227922	BOTTOM MOTOR HOUSING	
55	325417	370 BLUE DRUM ASSEMBLY + FACE (SPARE PART)	
	325431	370 RED DRUM ASSEMBLY + FACE (SPARE PART)	
	325432	370 GREEN DRUM ASSEMBLY + FACE (SPARE PART)	
	325433	370 YELLOW DRUM ASSEMBLY + FACE (SPARE PART)	
56	270167	QUICK RELEASE MOUNTING BRACKET	
57	219327	80MM LG COMPRESSION SPRING	
58	227926	AIR SEPERATOR	
59	227927	SWITCH MOUNTING BRACKET	
60	220698	SUPPRESSOR ASSEMBLY	

WIRING DIAGRAM

COMP. No

DRG. No
WD- 0238

12" PLASTIC GVE / CT LAMB MOTOR

ISSUE	REVISION	DRAWN	APPD.	DATE
A02	230078.230080 THERMAL OVERLOAD REMOVED	MCF	AJB	12:09:06

