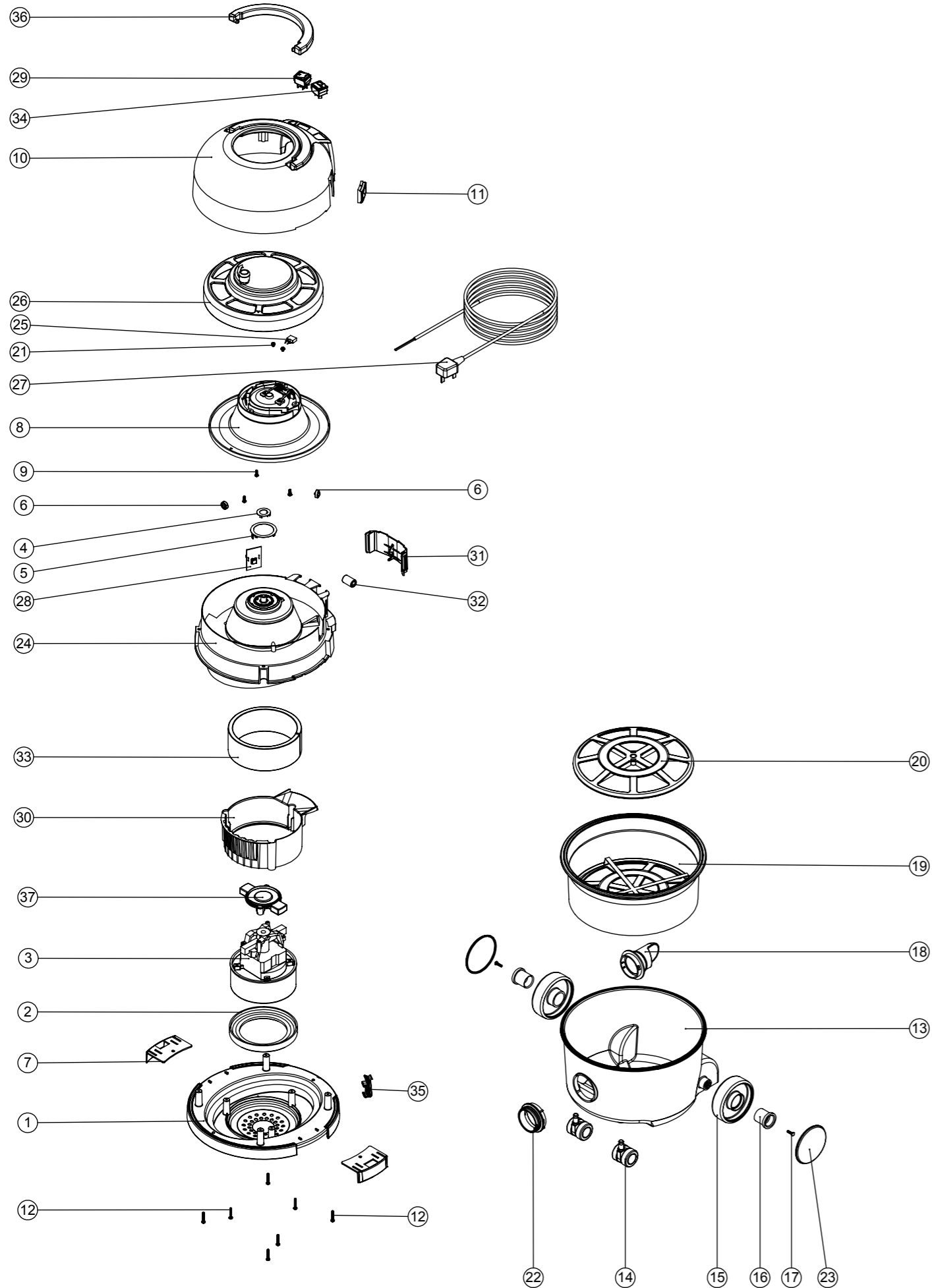


# Numatic International Spare Parts

Model No: HVR-200A / HET-200A (AUTOSAVE)

234584  
DRAWING: EXP-1012 ISS:A02  
28/01/2009



# Numatic International Spare Parts

Model No: HVR-200A / HET-200A (AUTOSAVE)

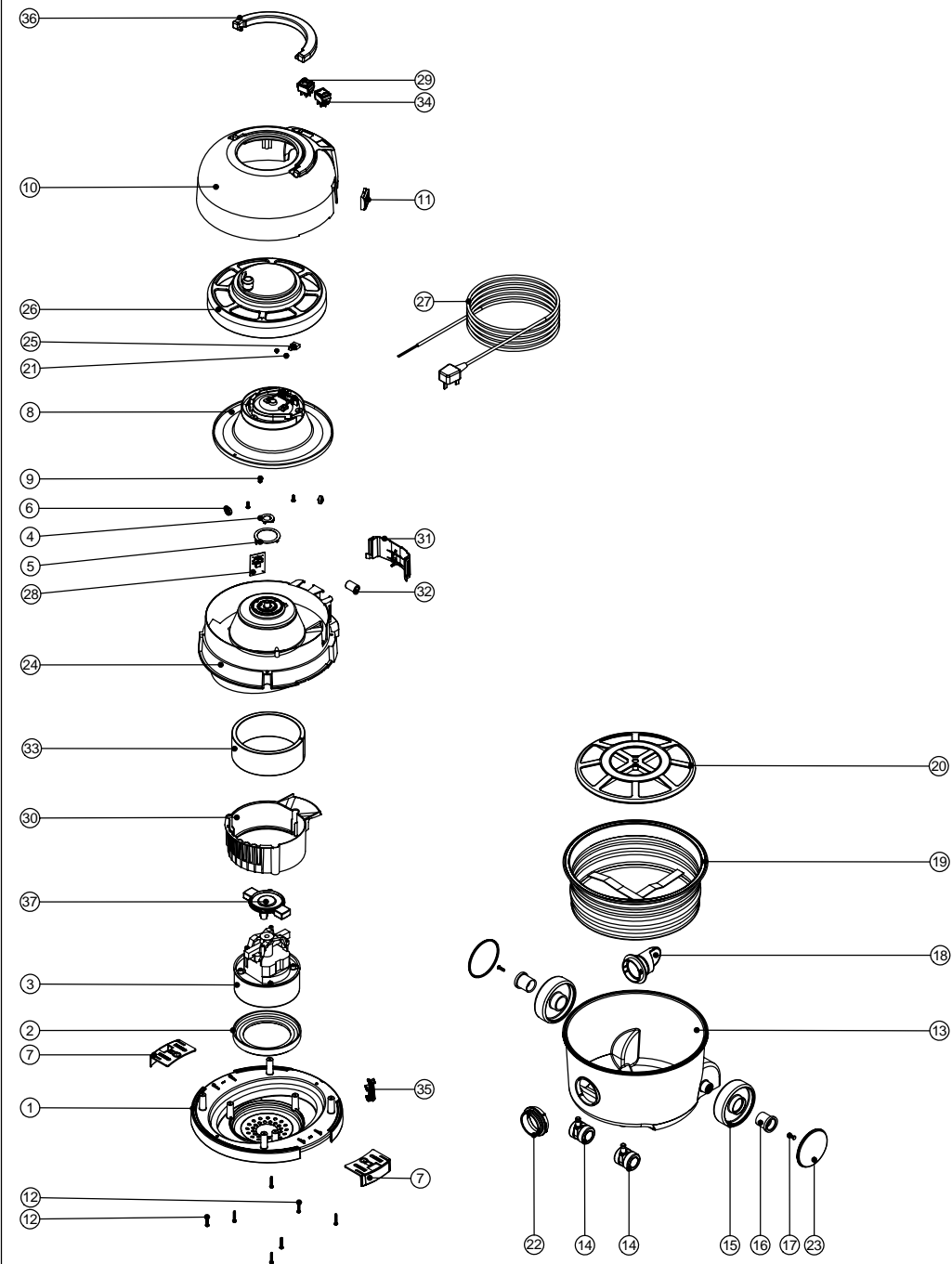
POS:	ITEM NO:	DESCRIPTION:	COMMENTS:
1	229618	BOTTOM MOTOR HOUSING (TWIN SHOT)	
2	227882	BOTTOM MOTOR GASKET	
3	205403	240V 2 STAGE THRO FLOW TAPER FAN MOTOR (DL21104T) TCO	
4	227141	INNER CONTACT RING	
5	227142	OUTER CONTACT RING	
6	227436	ROLLER WHEEL	
7	229622	TOGGLE (TWIN SHOT)	
8	227447	CABLE REEL MOULDING ASSEMBLY	
9	219101	No8 X 1/2 INCH LONG POZI PAN PLASTIITE SCREW	
10	229876	COVER + HANDLE ASSEMBLY (PRINTED WHITE HENRY LOGO + GREEN AUTOSAVE FLOWER LOGO)	INCLUDES ITEM 36 (227120)
	229877	COVER + HANDLE ASSEMBLY (PRINTED PINK HETTY LOGO + GREEN AUTOSAVE FLOWER LOGO)	INCLUDES ITEM 36 (227120)
11	237687	BLACK CABLE ENTRY	
12	219104	No8 X 1 INCH LONG POZI PAN PLASTITE SCREW	
13	227442	RED CONTAINER + FACE	
14	204000	40MM PU-TYRED BLACK TWIN WHEEL CASTOR	
15	227640	2 SHOT WHEEL ASSEMBLY	
16	227868	WHEEL HUB FOR 2 SHOT WHEEL	
17	219105	No8 X 5/8 INCH LONG POZI PAN PLASTITE SCREW	
18	227363	BAG CONNECTOR	
19	604165	12 INCH FILTER (DOUBLE BOTTOM) 160GRM SMS	
20	209200	12 INCH FILTER GRID	
21	219090	M4 X 8MM LONG POZI PAN SEMS SCREW	
22	227396	RED THREADED NECK	
23	227687	RED TRIM	
24	229620	TOP MOTOR HOUSING	
25	230096	SUPPRESSOR CAPACITOR ASSEMBLY WITH DISCHARGE RESISTOR	
26	333113	CABLE REEL COVER ASSEMBLY (C/W WINDER KNOB)	
27	236044	MAINS CABLE (10 METRE LONG X 0.75MM X 2 CORE (H05 V2V2-F) NZ PLUG)	
28	321990	NUMATIC 2 SPEED CONTROL PCB (240V) GREEN BOARD 180MB	
29	220582	GREEN ROCKER SWITCH	
30	229621	AIR GUIDE	
31	229623	SWITCH COVER	
32	230097	AXIAL FERRITE BEAD	
33	203020	POD SIDE FELT	
34	221102	RED MOMENTARY ROCKER SWITCH (BLACK BODY / RED ILLUMINATION WINDOW)	
35	229426	HENRY CLIPHOLDER	
36	227120	HANDLE	
37	229614	MOTOR PLATE BI-MATERIAL	

# Numatic International Spare Parts

Model No: HVR200-22 / HVR200M-22 / HVX200-22 / HET200-22

234393  
DRAWING: EXP-0824 ISS:A06  
04/04/2008

**NB : FOR WIRING SEE DRAWING: WD-0333**

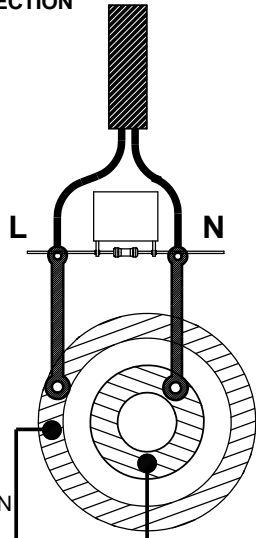
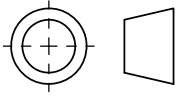


# Numatic International Spare Parts

Model No: HVR200-22 / HVR200M-22 / HVX200-22 / HET200-22

POS:	ITEM NO:	DESCRIPTION:	COMMENTS:
1	229618	BOTTOM MOTOR HOUSING (TWIN SHOT)	
2	227882	BOTTOM MOTOR GASKET	
3	205403	240V 2 STAGE THRO FLOW TAPER FAN MOTOR (DL21104T) TCO	
	205402	220V 2 STAGE THRO FLOW TAPER FAN MOTOR (DL21102T) TCO (MARKED 230V)	
	205401	120V 2 STAGE THRO FLOW TAPER FAN MOTOR (DL21101T) TCO	
	205225	120V 2 STAGE THRO FLOW TAPER FAN ECO MOTOR (DL21101ET) TCO	TAIWAN SPECIFICATION
4	227141	INNER CONTACT RING	
5	227142	OUTER CONTACT RING	
6	227436	ROLLER WHEEL	
7	229622	TOGGLE (TWIN SHOT)	
8	227447	CABLE REEL MOULDING ASSEMBLY	
	227348	CABLE REEL MOULDING ASSEMBLY	CSA APPROVED MACHINES
9	219101	No8 X 1/2 INCH LONG POZI PAN PLASTITE SCREW	
10	229626	COVER + HANDLE ASSEMBLY (PRINTED WHITE HENRY LOGO)	INCLUDES ITEM 37 (227120 HANDLE)
	325618	COVER + HANDLE ASSEMBLY (WHITE LOGO PRINTED HENRY MICRO)	INCLUDES ITEM 37 (227120 HANDLE)
	229642	COVER + HANDLE ASSEMBLY (PRINTED WHITE HENRY XTRA LOGO)	INCLUDES ITEM 37 (227120 HANDLE)
	229799	COVER + HANDLE ASSEMBLY PRINTED HETTY	INCLUDES ITEM 37 (227120 HANDLE)
11	227108	BLACK CABLE ENTRY	
12	219104	No8 X 1 INCH LONG POZI PAN PLASTITE SCREW	
13	227442	RED CONTAINER + FACE	
	227443	BLUE CONTAINER + FACE	
	227444	GREEN CONTAINER + FACE	
	227445	YELLOW CONTAINER + FACE	
	229796	PINK CONTAINER + FACE	
14	204000	40MM PU-TYRED BLACK TWIN WHEEL CASTOR	
15	227640	2 SHOT WHEEL ASSEMBLY	
16	227868	WHEEL HUB FOR 2 SHOT WHEEL	
17	219105	No8 X 5/8 INCH LONG POZI PAN PLASTITE SCREW	
18	227363	BAG CONNECTOR	
19	207098	WHITE FILTER (SMS) + U GASKET	HVR200-22
	207057	COMBINATION MICROTTEX FILTER ASSEMBLY	HVR200M-22
	207099	MICRO FRESH FILTER (CHARCOAL)	HVX200-22
20	209200	12 INCH FILTER GRID	
21	219090	M4 X 8MM LONG POZI PAN SEMS SCREW	
22	227396	RED THREADED NECK	
	227397	BLUE THREADED NECK	
	227398	GREEN THREADED NECK	
	227399	YELLOW THREADED NECK	
23	227687	RED TRIM	
	227688	BLUE TRIM	
	227689	GREEN TRIM	
	227690	YELLOW TRIM	
	229798	PINK TRIM	
24	229620	TOP MOTOR HOUSING	
	325682	HVR/NRV TOP MOTOR HOUSING (TWIN ROCKER SWITCH) MODIFIED FOR 1.5MM CABLE	INDUSTRIAL MACHINES ONLY
	229739	TOP MOTOR HOUSING + CONTACT RING ASSEMBLY (V2 RATED MATERIAL)	CSA APPROVED MACHINES
25	230096	SUPPRESSOR CAPACITOR ASSEMBLY WITH DISCHARGE RESISTOR	
26	333113	CABLE REEL COVER ASSEMBLY (C/W WINDER KNOB)	
27	236115	MAINS CABLE (10 METRE LONG X 0.75MM X 2 CORE (H05 V2V2-F) UK PLUG)	
	220860	MAINS CABLE (2 CORE / SWISS PLUG)	
	220863	MAINS CABLE (2 CORE / SOUTH AFRICAN PLUG)	
	220939	MAINS CABLE (2 CORE / AUSTRALIAN PLUG)	
	236049	MAINS CABLE (2 CORE / 16 AMP INDUSTRIAL PLUG)	INDUSTRIAL MACHINES ONLY
	236106	MAINS CABLE (2 CORE / 1.5MM / 10 METRE BLACK TAIWAN CABLE / TW15CS2)	
28	206735	NUMATIC 2 SPEED CONTROL PCB (220V-240V) ORANGE BOARD	
	206608	NUMATIC 2 SPEED CONTROL PCB (120V) RED BOARD	
29	220243	BLACK/GREEN ROCKER SWITCH	
30	229621	AIR GUIDE	
31	229623	SWITCH COVER	
32	230097	AXIAL FERRITE BEAD	
33	203020	POD SIDE FELT	
34	220552	RED ROCKER SWITCH	
35	229426	HENRY CLIPHOLDER	
36	227120	HANDLE	
37	229614	MOTOR PLATE BI -MATERIAL	

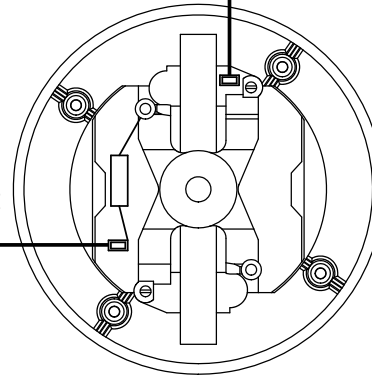
THIRD ANGLE PROJECTION



290mm BROWN LINK WIRE (321433)

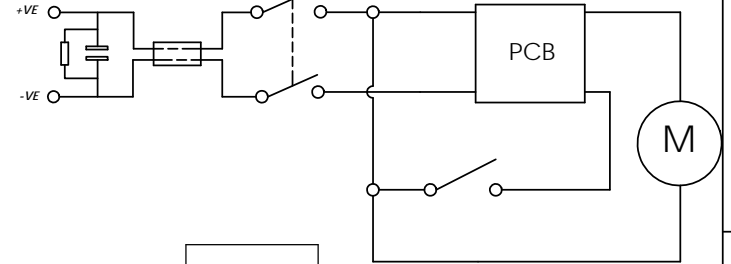
FERRITE BEAD (230097)

245mm WHITE LINK WIRE (321430)



440mm WHITE LINK WIRE (321429)

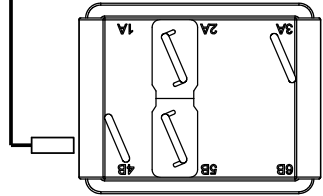
SCHEMATIC DIAGRAM



195mm BROWN LINK WIRE

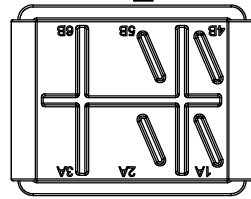
PCB (321990)

240mm BLACK LINK WIRE (321431)



MOMENTARY ROCKER SWITCH (221102)

100mm BROWN LINK WIRE



GREEN ROCKER SWITCH (220582)

DOUBLER 100mm + 195mm BROWN LINK WIRE (321523)

175mm BLUE LINK WIRE (321434)

260mm BLUE LINK WIRE (321435)

All components must be ROHS compliant.



**Numatic INTERNATIONAL LTD**

MILLFIELD ROAD, CHARD, SOMERSET TA20 2GB ENGLAND

THIS DRAWING IS COPYRIGHT AND IS THE PROPERTY OF NUMATIC INTERNATIONAL LTD. AND MUST NOT BE USED WITHOUT THEIR KNOWLEDGE NOR COMMUNICATED TO ANY PERSON OR COMPANY.

THE EXAMPLE SHOWN DETAILS THE METHOD USED FOR IDENTIFYING CRITICAL (INSPECTION) DIMENSIONS WHERE APPLICABLE

**TOLERANCES:-** LINEAR: 0 DECIMAL PLACE = +/- 1.0mm ANGULAR:-  
 1 DECIMAL PLACE = +/- 0.25mm +/- 0.5 DEGREE  
 (UNLESS OTHERWISE STATED) 2 DECIMAL PLACES = +/- 0.05mm

**TITLE:-**  
 (WD-0368) AUTOSAVE 12 INCH REWIND WIRING DIAGRAM (230V)

DIMNs IN MILLIMETERS	<b>MATERIAL:-</b>	<b>ITEM No(s):-</b> 123339
PRINT SIZE A4	<b>FINISH:-</b>	<b>DRG No:-</b> WD-0368
NOT TO SCALE		

A04	PCB 208428 WAS 208100 NOW 321990	mikf	IanL	16/12/10
<b>REVISION:</b>	<b>CHANGE DETAIL:</b>	<b>DRAWN:</b>	<b>APPD:</b>	<b>DATE:</b>