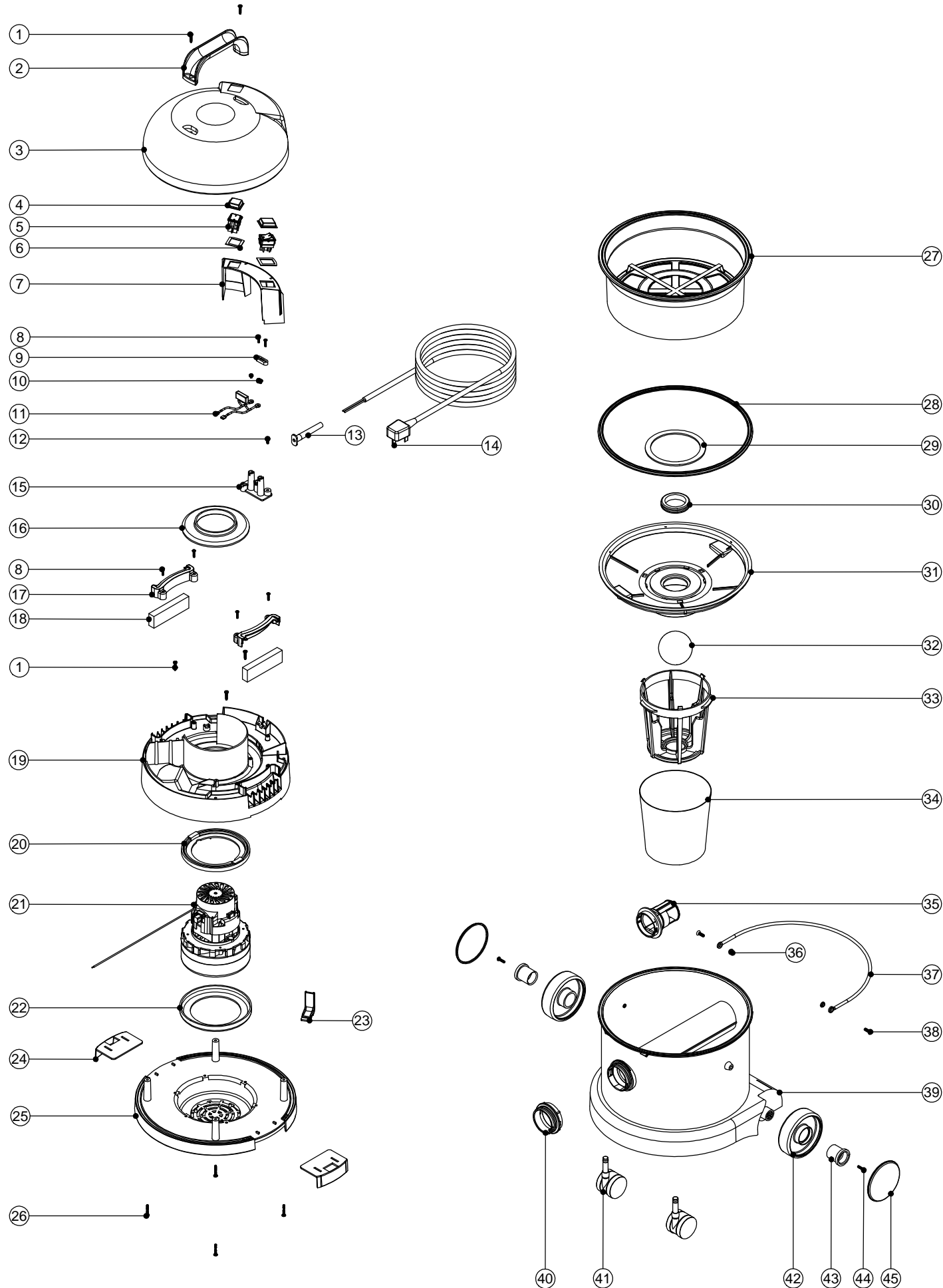


Numatic International Spare Parts

Model No: CVC370-2 EXPLODED DRAWING

234301
DRAWING: EXP-0732 ISS:A07
01/05/2012

NB: FOR WIRING SEE DRAWING: WD-0239



Numatic International Spare Parts

Model No: CVC370-2 EXPLODED DRAWING

POS	ITEM NO:	DESCRIPTION	COMMENTS
1	219041	No8 X 3/4 INCH LONG POZI PAN SCREW	
2	206451	HANDLE	
3	325702	CVC COVER (1 SWITCH) PRINTED NUMATIC WORLD LOGO (WHITE)	
4	206573	SWITCH COVER (PLUG HANDLE)	
5	220843	BLUE ROCKER SWITCH	
6	291015	SWITCH GASKET - WV/CT	
7	227927	SWITCH MOUNTING BRACKET	
8	219107	No6 X 5/8 INCH LONG POZI PAN PLASTITE SCREW	
9	227008	BLACK CABLE CLAMP	
10	219090	M4 X 8MM LONG POZI PAN SEMS SCREW	
11	220698	SUPPRESSOR ASSEMBLY	
12	219101	No8 X 1/2 INCH LONG POZI PAN PLASTITE SCREW	
13	220923	STRESS RELIEF	
14	236044	10.0M X 1.00MM X 2 CORE CABLE (AUSTRALIAN PLUG)	
	236034	10.0M X 1.00MM X 2 CORE CABLE (EURO PLUG)	
	236047	10.0M X 1.00MM X 2 CORE CABLE (SWISS PLUG)	
	236036	10.0M X 1.00MM X 2 CORE CABLE (SOUTH AFRICAN PLUG)	
	236049	10.0M X 1.50MM X 2 CORE CABLE (INDUSTRIAL PLUG)	
	236043	10.0M X 18AWG X 3 CORE YELLOW CABLE (CSA PLUG)	
			CSA MACHINES
15	220472	TERMINAL BLOCK MOULD + INSERTS	
16	227926	AIR SEPERATOR	
17	237184	SPLASH PAD RETAINER - WV/CT	
18	291014	SPLASH PAD - WV/CT	
19	227986	TOP MOTOR HOUSING (PRINTED WHITE CHARLES) (LAMB MOTOR)	
20	227925	TOP MOTOR GASKET	
21	205443	240V 2 STAGE D.I BYPASS ACUSTEK MOTOR (BL21104T)(MARKED 230V) TCO	
22	202031	BOTTOM MOTOR GASKET	
23	227019	CABLE HOOK	
24	227115	TOGGLE	
25	227921	BOTTOM MOTOR HOUSING	
26	219369	No8 X 1 INCH LONG POZI PAN STAINLESS STEEL PLASTITE SCREW	
27	604165	12 INCH FILTER (DOUBLE BOTTOM) 160GRM SMS	
28	207011	FLOAT CAGE GASKET	
29	225083	FLOAT ASSEMBLY GASKET	
30	220235	FLOAT GROMMET	
31	229635	FLOAT CAGE SUPPORT	
32	206026	POLYPROP BALL	
33	225086	FLOAT CAGE	
34	207055	GAUZE FILTER	
35	206493	WET DRY CONNECTOR	
36	208026	BUCKET HANDLE SPACER	
37	403039	BUCKET HANDLE	
38	219282	M5 X 16MM LONG POZI PAN COUNTERSUNK SCREW	
39	325417	370 NUPRO BLUE DRUM ASSEMBLY + FACE (SPARE PART)	
	325431	370 RED DRUM ASSEMBLY + FACE (SPARE PART)	
	325432	370 GREEN DRUM ASSEMBLY + FACE (SPARE PART)	
	325433	370 YELLOW DRUM ASSEMBLY + FACE (SPARE PART)	
40	227397	BLUE THREADED NECK	
	227396	RED THREADED NECK	
	227398	GREEN THREADED NECK	
	227399	YELLOW THREADED NECK	
41	204111	50MM TWIN WHEEL CASTOR WITH PU TYRE	
42	227640	2 SHOT WHEEL ASSEMBLY	
43	227868	WHEEL HUB FOR 2 SHOT WHEEL	
44	219105	No8 X 5/8 INCH LONG POZI PAN PLASTITE SCREW	
45	227688	BLUE TRIM	
	227687	RED TRIM	
	227689	GREEN TRIM	
	227690	YELLOW TRIM	

WIRING DIAGRAM

COMP. No

DRG. No

WD-0239

12" PLASTIC WV/CVC LAMB MOTOR

ISSUE	REVISION	DRAWN	APPD.	DATE
A02	230078. 230080 THERMAL OVERLOAD REMOVED	MCF	AJB	12:09:06

