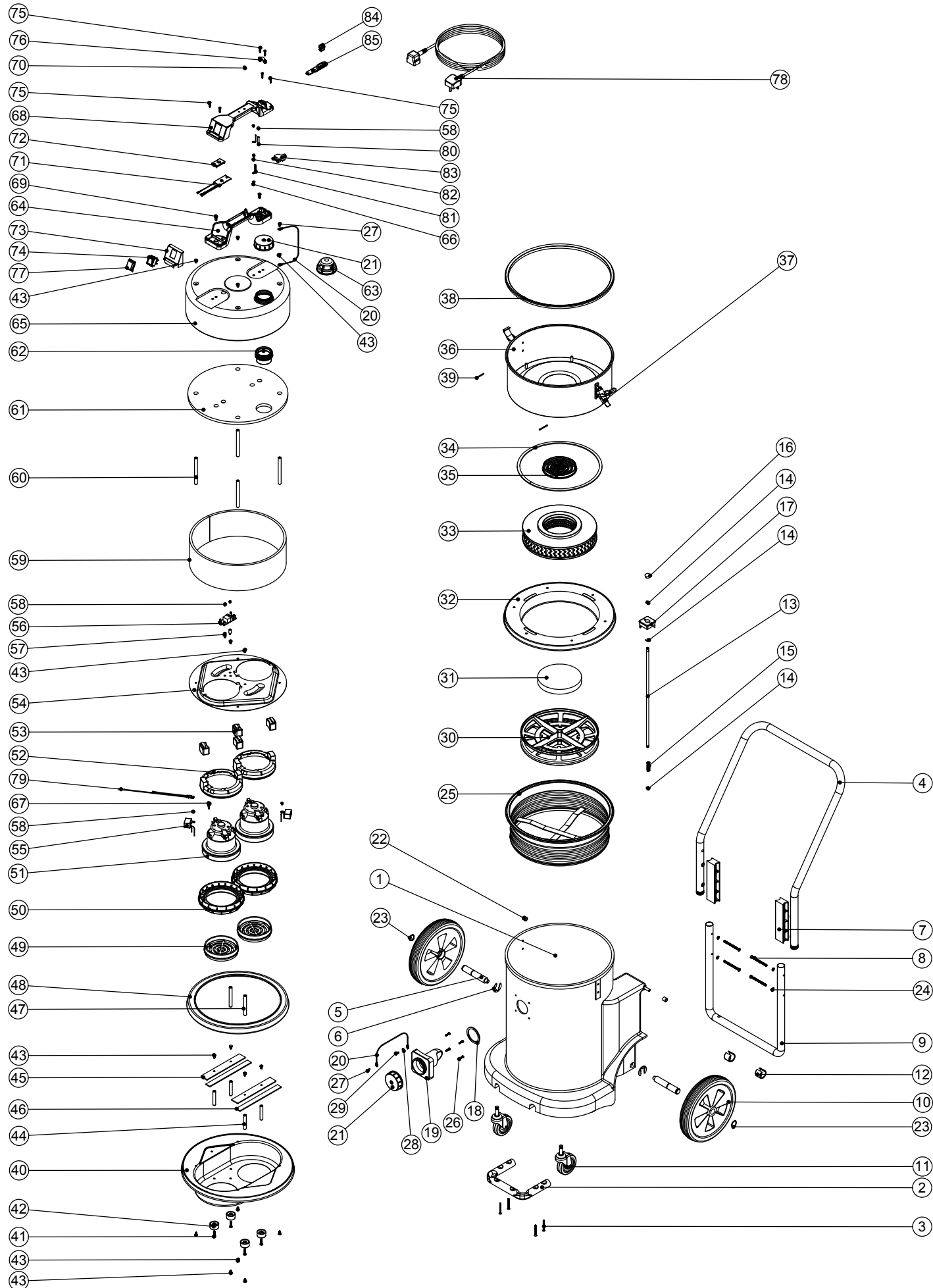


Numatic International Spare Parts

Model No: HZDQ-902 EXPLODED DRAWING

234242

DRAWING: EXP-0673 ISS:A01
06/05/2004



Numatic International Spare Parts

Model No: HZDQ-902 EXPLODED DRAWING

POS:	ITEM NO:	DESCRIPTION:	COMMENTS:
1	300117	YELLOW CONTAINER	
2	303127	TOOL MOUNTING BAR	
3	219316	No10 X 43MM LONG POZI PAN COUNTER SUNK PLASTITE SCREW	
4	329169	HANDLE ASSEMBLY	
5	206137	STUB AXLE	
6	219306	E-CLIP	
7	206128	HANDLE BLOCK SPACER	
8	219422	M6 X 70MM LONG POZI PAN COUNTERSUNK SCREW	
9	303128	LOWER HANDLE	
10	204028	10 INCH WHEEL	
11	204060	3 INCH CASTOR	
12	206295	PLASTIC SADDLE FOOT	
13	206133	LOCKING BAR	
14	219307	E CLIP	
15	219312	COMPRESSION SPRING	
16	206132	BLACK PLASTIC CAP	
17	206126	LOCKING BAR KNOB	
18	202027	HOSE FLANGE GASKET	
19	303035	DRILLED DRUM FLANGE	
20	303037	BLANKING CAP FIXING WIRE	
21	206363	BLANKING CAP	
22	21985V	SPACER	
23	219308	CIRCLIP	
24	219423	M6 COUNTERSUNK LOCK WASHER	
25	207030	WHITE FILTER ASSEMBLY	
26	219105	No8 X 5/8 INCH LONG POZI PAN PLASTITE SCREW	
27	219301	No6 X 3/8 INCH LONG POZI PAN SELF TAP SCREW	
28	219003	M5 FORM A STEEL WASHER	
29	219101	No8 X 1/2 INCH LONG POZI PAN PLASTITE SCREW	
30	209101	FILTER GRID DOUBLE	
31	206099	RUBBER PAD	
32	401019	YELLOW BOTTOM PLATE	
33	604125	NVM-25B FILTER CARTRIDGE	
34	212052	3MM X 9MM INSEAL	
35	206010	FAN GUARD	
36	401018	YELLOW TOP PLATE	
37	206022	SMALL CLAW TOGGLE	
38	202044	TOP PLATE SEAL	
39	219171	3.2 X 28MM SPLIT COTTER PIN	
40	401371	BLACK DUPLEX BOTTOM MOTOR HOUSING	
41	219546	M5 X 20MM LONG POZI PAN SEMS SCREW	
42	303573	PLASTIC FOOT (DRILLED)	
43	219047	M5 X 10MM LONG POZI PAN SEMS SCREW	
44	208013	56.6MM LONG ALUMINIUM SPACER	
45	401404	BLACK HEAD SUPPORT BAR	
46	212024	INSEAL	
47	208001	80MM ALUMINIUM SPACER	
48	202002	BUFFER GASKET	
49	227173	FAN GUARD	
50	202088	BOTTOM MOTOR GASKET	
51	205070	230V MOTOR	
	205075	120V MOTOR	
52	206420	ES MOTOR SPACER (BLACK)	
53	202087	TOP MOUNTING RUBBER	
54	401369	BLACK DUPLEX TOP MOTOR HOUSING	
55	220777	SUPPRESSOR ASSEMBLY	
56	220555	230V DELAY START MODULE	
	220556	115V DELAY START MODULE	
57	219414	NYLON PILLAR	
58	219090	M4 X 8MM LONG POZI PAN SEMS SCREW	
59	203003	SIDE FELT	
60	208002	108.5MM LONG ALUMINIUM SPACER	
61	303027	TOP FELT PUNCHED	
62	206005	AIR OUTLET NECK	
63	604151	AIR DIFFUSER FOR BLOWER TYPES	
64	320686	HANDLE BASE MOULDING	
65	401800	BLACK HEAD TOP	
66	220078	BRASS EARTHING SPACER	
67	206490	OVERLOAD CLIP	
68	320678	HANDLE COVER (DRILLED)	
69	219045	M5 X 16MM LONG POZI PAN SEMS SCREW	
70	220381	AMBER LENS	
71	220677	230V LOW FLOW INDICATOR DEVICE	
72	202086	LOW FLOW PCB MOUNTING GASKET	
73	227635	SWITCH MOUNTING BRACKET (1 SWITCH)	
74	220552	RED ROCKER SWITCH	
75	219107	No6 X 5/8 INCH LONG POZI PAN PLASTITE SCREW	
76	227564	PLUG LOCATION CLAMP	
77	206573	SWITCH COVER (PLUG HANDLE)	
78	220950	12.5M X 1.00MM X 3 CORE NUCABLE ((UK PLUG)	
	220956	12.5M X 1.00MM X 3 CORE NUCABLE ((EURO PLUG)	
	220909	12.5MT X 3CORE X 1.5MM CABLE PLUS 16AMP INDUSTRIAL PLUG	
79	206574	DUPLEX ES MOTOR BIMETALLIC OVERLOAD ASSEMBLY	
80	206562	CONTACT PIN	
81	206563	EARTH CONTACT PIN	
82	219274	M4 X 20MM LONG POZI PAN SCREW	
83	227631	TERMINAL COVER & CLAMP (3 PIN)	
84	227637	CABLE CLIP	
85	227636	STRAIN RELIEF	