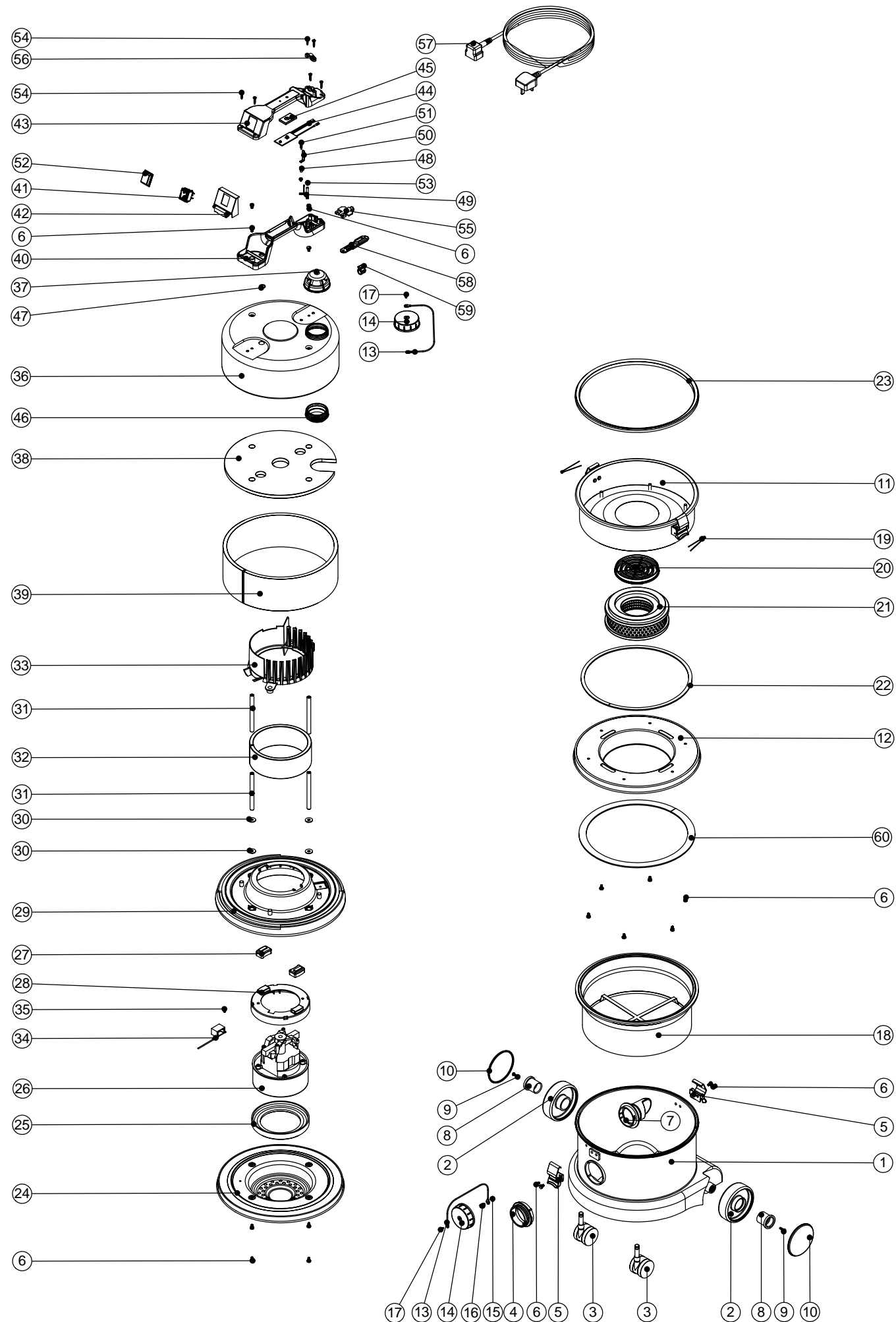


Numatic International Spare Parts

Model No: HZQ200-2 EXPLODED DRAWING

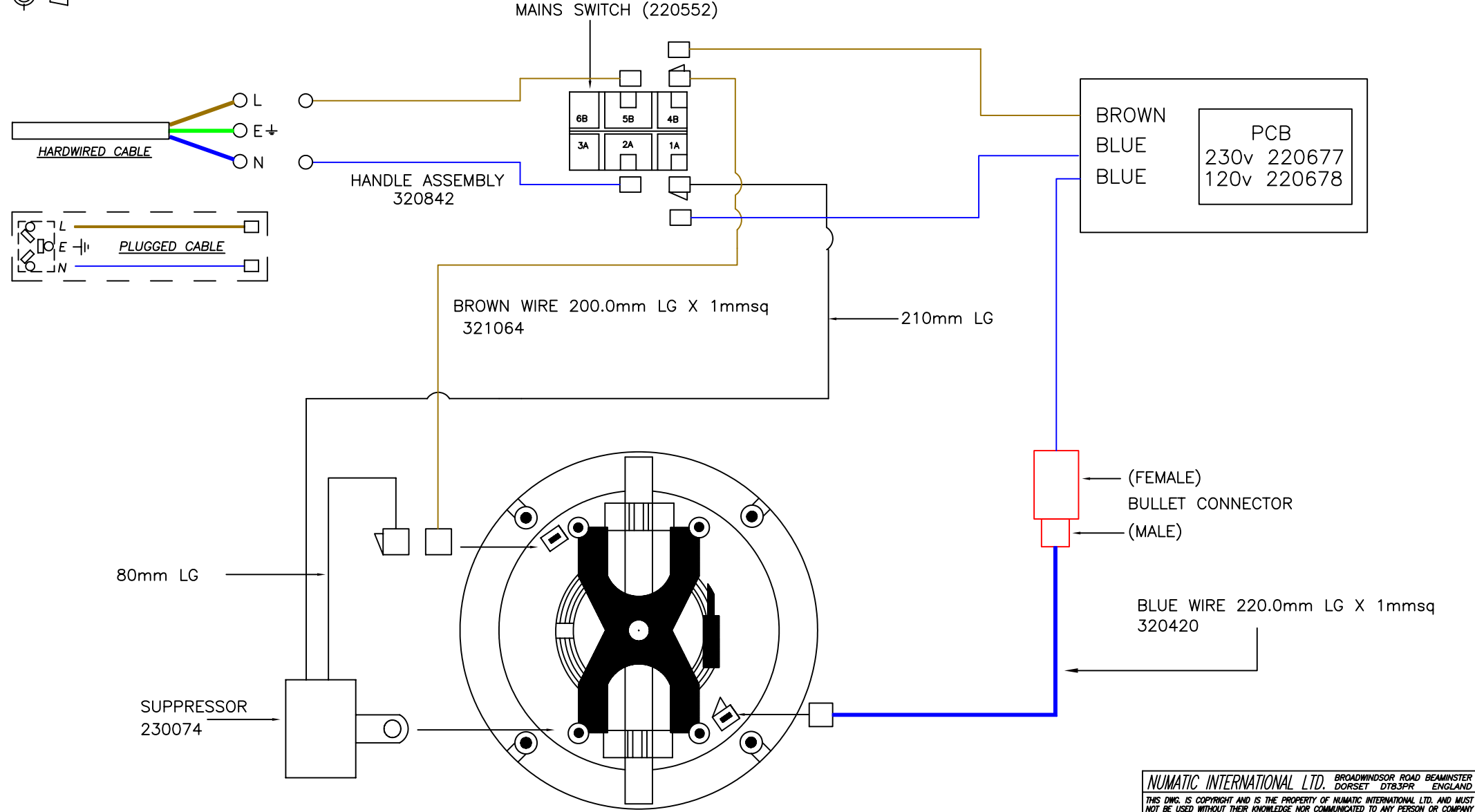
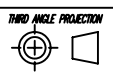
234370
DRAWING: EXP-0801 ISS:A03
19/07/2005



Numatic International Spare Parts

Model No: HZQ200-2 EXPLODED DRAWING

POS:	ITEM NO:	DESCRIPTION:	COMMENTS:
1	300238	YELLOW CONTAINER (NO FACE)	
2	227640	2 SHOT WHEEL ASSEMBLY	
3	204111	50MM TWIN WHEEL CASTOR WITH PU TYRE	
4	227399	YELLOW THREADED NECK	
5	206038	TOGGLE	
6	219047	M5 X 10MM LONG POZI PAN SEMS SCREW	
7	227363	BAG CONNECTOR	
8	227868	WHEEL HUB FOR 2 SHOT WHEEL	
9	219105	No8 X 5/8 INCH LONG POZI PAN PLASTITE SCREW	
10	227638	BLACK TRIM	
11	401389	HZ TOP PLATE YELLOW	
12	401017	YELLOW BOTTOM PLATE	
13	303037	BLANKING CAP FIXING WIRE	
14	206363	BLANKING CAP	
15	219076	M5 NYLON INSERT NUT	
16	219049	M5 X 12MM LONG POZI PAN SCREW	
17	219301	No6 X 3/8 INCH LONG POZI PAN SELF TAP SCREW	
18	207109	12 INCH FILTER (DOUBLE BOTTOM) 160GRM SMS	
19	219172	1/8 X 56MM SPLIT COTTER PIN"	
20	206010	FAN GUARD	
21	604124	NVM-24B REPLACEMENT HZ MICRO HEPA CARTRIDGE	
22	212052	3MM X 9MM INSEAL	
23	202043	TOP PLATE SEAL	
24	401348	BLACK BOTTOM MOTOR HOUSING	
25	227882	BOTTOM MOTOR GASKET	
26	205402	220V 2 STAGE THRO FLOW TAPER FAN MOTOR (DL21102T) TCO (MARKED 230V)	220V VERSION
	205403	240V 2 STAGE THRO FLOW TAPER FAN MOTOR (DL21104T) TCO (MARKED 230V)	240V VERSION
	205401	120V 2 STAGE THRO FLOW TAPER FAN MOTOR (DL21101T) TCO	115V VERSION
27	227885	MOUNTING RUBBER	
28	227886	MOTOR SPACER (LAMB DAF MOTOR)	
29	225136	NVQ TOP MOTOR HOUSING (PLASTIC) LAMB MOTOR	
30	219876	1/4 X 3/4 X 16G PLAIN WASHER TABLE 5 ZINC PLATED	
31	208003	115MM LONG ALUMINIUM SPACER	
32	203020	POD SIDE FELT	
33	227883	NOISE REDUCTION POD	
34	230074	DELTA SUPPRESSOR (LAMB MOTOR)	
35	219858	M5 x 8MM HEX WASHER FACED TAPFIX (DIN7500D)	
36	401704	BLACK HEAD TOP	
37	604151	AIR DIFFUSER FOR BLOWER TYPES	
38	303026	TOP FELT PUNCHED	
39	303024	SIDE FELT PUNCHED	
40	320686	HANDLE BASE MOULDING	
41	220552	RED ROCKER SWITCH	
42	227635	SWITCH MOUNTING BRACKET (1 SWITCH)	
43	320678	HANDLE COVER (DRILLED)	
44	220677	230V LOW FLOW INDICATOR DEVICE	220/240V VERSION
	220678	115V LOW FLOW INDICATOR DEVICE	115V VERSION
45	202086	LOW FLOW PCB MOUNTING GASKET	
46	227029	END FITTING	
47	219363	O-RING	
48	220078	BRASS EARTHING SPACER	
49	206562	CONTACT PIN	
50	206563	EARTH CONTACT PIN	
51	219274	M4 X 20MM LONG POZI PAN SCREW	
52	206573	SWITCH COVER (PLUG HANDLE)	
53	219090	M4 X 8MM LONG POZI PAN SEMS SCREW	
54	219107	No6 X 5/8 INCH LONG POZI PAN PLASTITE SCREW	
55	227631	TERMINAL COVER & CLAMP (3 PIN)	
56	227564	PLUG LOCATION CLAMP	
57	236010	10.0M X 1.00MM X 3 CORE NUCABLE (UK PLUG)	
	236014	10.0M X 1.00MM X 3 CORE NUCABLE (EURO PLUG)	
	236018	10.0M X 1.00MM X 3 CORE NUCABLE (SWISS PLUG)	
	236022	10.0M X 1.00MM X 3 CORE NUCABLE (SOUTH AFRICAN PLUG)	
	236030	10.0M X 1.00MM X 3 CORE NUCABLE (AUSTRALIAN PLUG)	
	236050	10.0M X 1.50MM X 3 CORE CABLE (INDUSTRIAL PLUG)	
58	227636	STRAIN RELIEF	
59	227637	CABLE CLIP	
60	212024	INSEAL	



A02	LINK WIRE 321064 LENGTH CHANGED DUE TO ERROR & SWITCH ROTATED 180 DEG.	JSW	AJB	29:06:04
A01	NEW DRAWING	JSW	AJB	15:06:04
ISSUE	REVISION	DRAWN	APPD	DATE

TOLERANCES: 0 DEC.PLACES = +/- 1.0mm
 1 DEC.PLACE = +/- 0.25mm
 2 DEC.PLACES = +/- 0.05mm
 ANGULAR: +/- 0.5°
 UNLESS OTHERWISE STATED

NUMATIC INTERNATIONAL LTD. BROADWINDSOR ROAD BEAMINSTER DORSET DT83PR ENGLAND

THIS DWG. IS COPYRIGHT AND IS THE PROPERTY OF NUMATIC INTERNATIONAL LTD. AND MUST NOT BE USED WITHOUT THEIR KNOWLEDGE NOR COMMUNICATED TO ANY PERSON OR COMPANY

TITLE
 HZQ 12 & 14 INCH SIMPLEX 2 STAGE LAMB MOTOR

DWG NO	MATERIAL	COMP NO
SCALE	FINISH	DRG NO
		WD- 0235