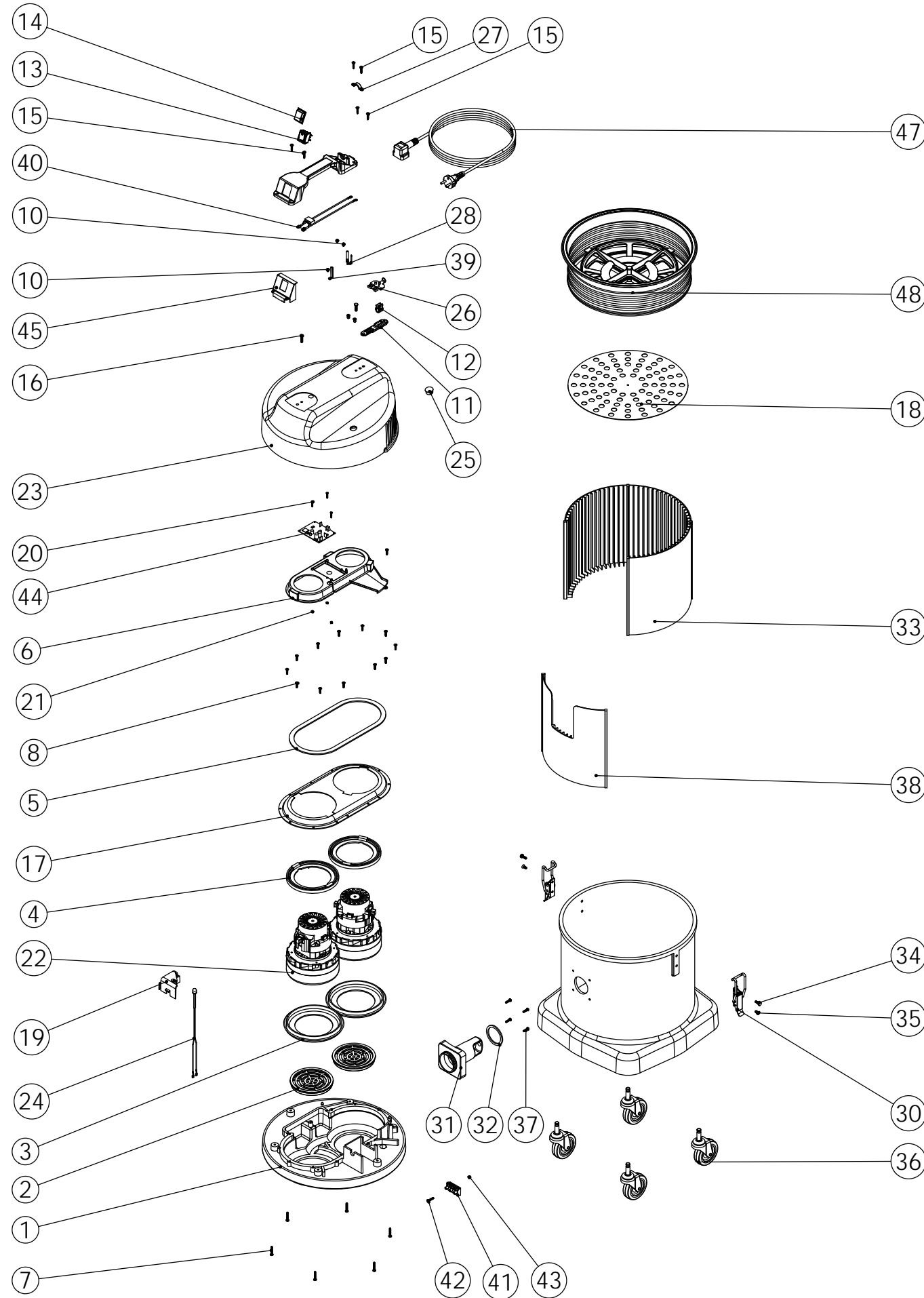


**Numatic International Spare Parts**

**Model No: NDD570 EXPLODED DRAWING**

234685  
DRAWING: DRW-4427 A01  
04/09/2009

NB: FOR WIRING SEE DRAWING: DRW-4345 (220/240V)



**Numatic International Spare Parts**

**Model No: NDD570 EXPLODED DRAWING**

POS	ITEM NO:	DESCRIPTION:	COMMENTS:
1	301048	PROCESSED BOTTOM MOTOR HOUSING	
2	206010	FAN GUARD	
3	202005	MOTOR BOTTOM GASKET	
4	227925	TOP MOTOR GASKET	
5	202012	GASKET	
6	237067	DUPLEX AIR SEPERATOR (FINE DUST SYSTEM)	
7	219369	No8 X 1 INCH LONG POZI PAN STAINLESS STEEL PLASTITE SCREW	
8	219370	No8 X 5/8 INCH LONG PLASTITE STAINLESS STEEL SCREW	
9	320686	HANDLE BASE MOULDING + INSERTS	
10	219090	M4 X 8MM LONG POZI PAN SEMS SCREW	
11	227636	STRAIN RELIEF	
12	227637	CABLE CLIP	
13	220552	RED ROCKER SWITCH	
14	206573	SWITCH COVER (PLUG HANDLE)	
15	219107	No6 X 5/8 INCH LONG POZI PAN PLASTITE SCREW	
16	219546	M5 X 20MM LONG POZI PAN SEMS SCREW	
17	225175	DUPLEX NDD TOP MOTOR HOUSING	
18	401447	DRUM BASE (PAINTED GREY)	
19	237069	LED HOLDER (DUSTCARE SYSTEM)	
20	219038	M3 X 16MM LONG SLOT SCREW	
21	219070	M3 NYLON INSERT NUT	
22	205442	220V 2 STAGE D.I BYPASS ACUSTEK MOTOR (BL21102T) (MARKED 230V) TCO	
23	205443	240V 2 STAGE D.I BYPASS ACUSTEK MOTOR (BL21102T) (MARKED 230V) TCO	
24	323001	NDD COVER PROCESSED FOR LOW FLO LED	
25	230165	LOW FLOW LED LOOM	
26	220967	LENS COVER	
27	227631	TERMINAL COVER & CLAMP (3 PIN)	
28	216290	CABLE CLAMP	
29	206562	CONTACT PIN	
30	325132	GREY CONTAINER	
31	206135	TOGGLE FASTENER	
32	208220	BAG CONNECTOR - (FINE DUST 14" DRUM)	
33	202027	HOSE FLANGE GASKET	
34	237048	DRUM LINER (FOR ASSEMBLY VIEW)	
35	219045	M5 X 16MM LONG POZI PAN SEMS SCREW	
36	219330	M5 X 12MM LONG POZI PAN COUNTERSUNK SCREW	
37	204060	3 INCH CASTOR	
38	219105	No8 X 5/8 INCH LONG POZI PAN PLASTITE SCREW	
39	308028	DRUM LINER (FOR ASSEMBLY VIEW ONLY)	
40	206563	EARTH CONTACT PIN	
41	230151	220V DUPLEX SUPPRESSOR ASSEMBLY	
42	208263	TERMINAL BLOCK (3-pole 16A)	
43	21990V	M4 X 20MM LONG POZI PAN SCREW	
44	219083	M4 NYLON INSERT NUT	
45	230188	DUPLEX CONTROL BOARD PCB 100-240 V AC .50/60HZ	
46	227635	SWITCH MOUNTING BRACKET (1 SWITCH)	
47	229990	HANDLE COVER 16AMP 2PIN	
48	236144	10.0MT X 1.5MM X 2 CORE YELLOW CABLE (SOCKET + PLUG) EURO	
	236146	10.0MT X 1.5MM X 2 CORE YELLOW CABLE (SOCKET + PLUG) UK	
	236147	10.0MT X 1.5MM X 2 CORE YELLOW CABLE (SOCKET + PLUG) SWISS	
48	502014	14 INCH COMBINATION MICROTEx FILTER ASSEMBLY	