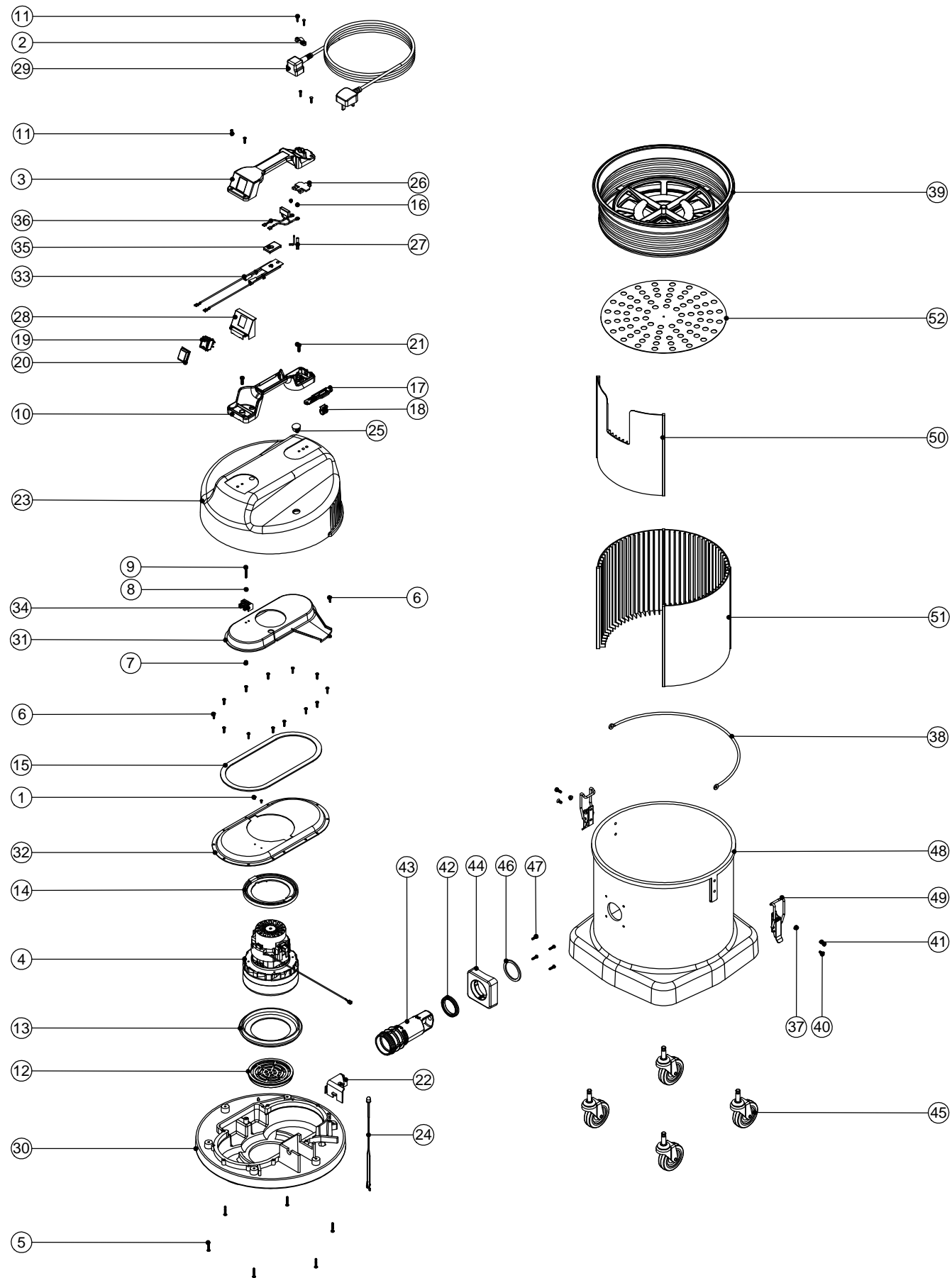


Numatic International Spare Parts

Model No: NDS 570 EXPLODED DRAWING

NB: FOR WIRING SEE DRAWING: DRW-5759,DRW-5761,DRW-5762

234739
DRAWING: DRW-5782 ISS: A02
14/02/2012

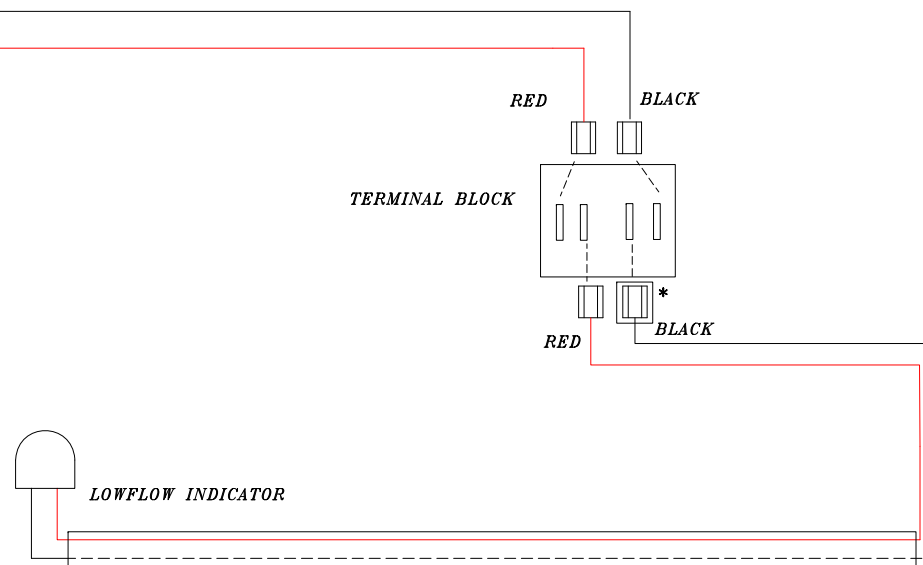
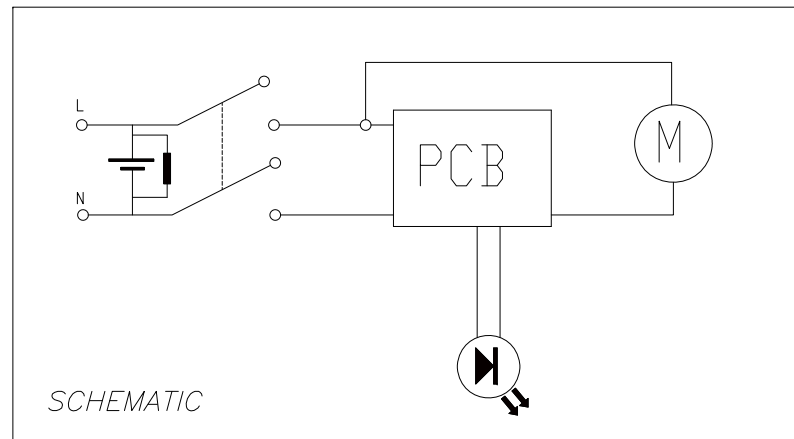
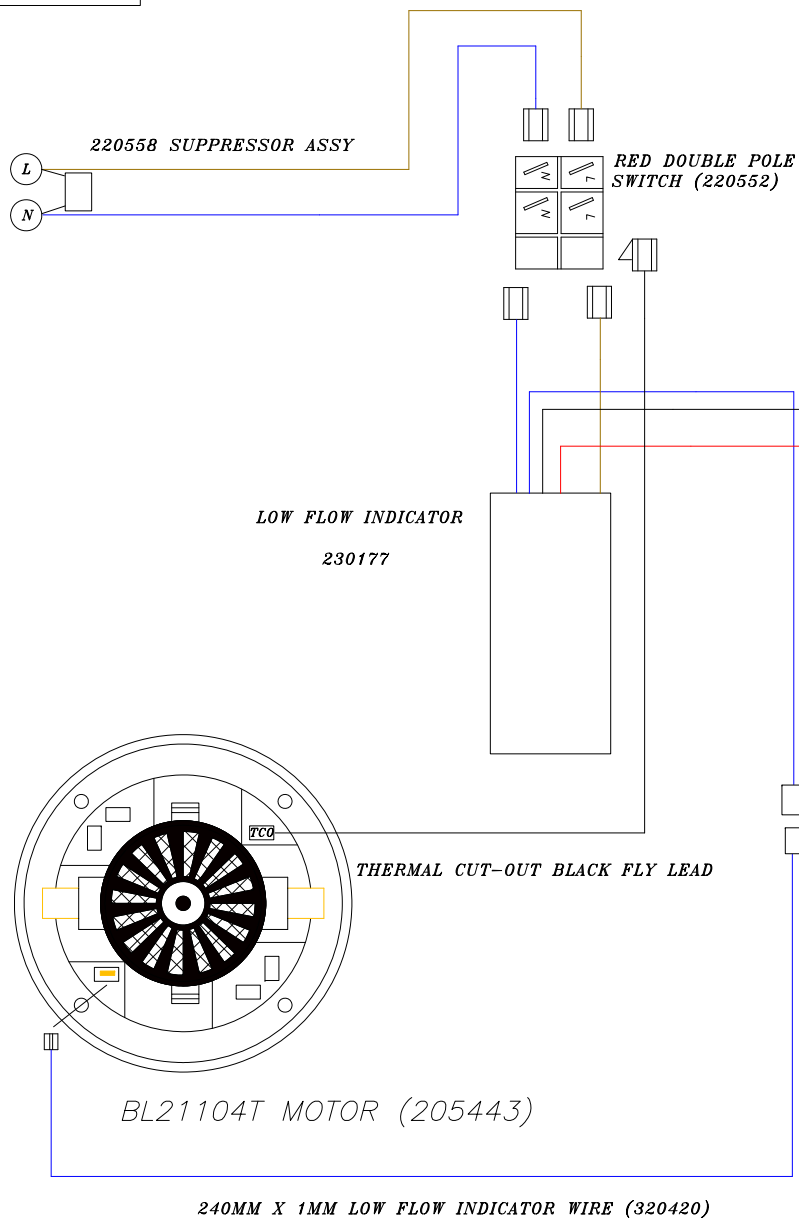


Numatic International Spare Parts

Model No: NDS 570 EXPLODED DRAWING

ITEM:	PART No:	DESCRIPTION:	COMMENTS:
1	219491	M3.5MM LG.POZI-PAN.SCREW.Z/PL.TAPTITE	
2	227564	PLUG LOCATION CLAMP	
	220131	CABLE CLAMP	USA
	220131	CABLE STRESS RELIEF RE. PV1157	USA
3	320677	HANDLE COVER DRILLED FOR HZ (SOCKET) 10 AMP 2 PIN	
	320826	HANDLE COVER DRILLED FOR HZ (HARD WIRED) V2	USA
4	305034	240V 2 STAGE D.I BYPASS ACUSTEK MOTOR (BL21104T) 220107 6.3MM PIGGYBACK TERMINAL	UK
	305035	230V 2 STAGE D.I BYPASS ACUSTEK MOTOR (BL21104T) 220107 6.3MM PIGGYBACK TERMINAL	EURO, SWISS
	305036	120V 2 STAGE D.I BYPASS ACUSTEK MOTOR (BL21101T) 220107 6.3MM PIGGYBACK TERMINAL	USA
5	219369	NO8.1 INCH LG.POZI-PAN.SCREW.STAINLESS STEEL.PLASTITE	
6	219370	NO8.5/8" LG.POZI-PAN.SCREW.STAINLESS STEEL.PLASTITE	
7	219687	NUT.M4.NYLON INSERT.S/STEEL	
8	219206	WASHER.M4.FORM A.Z/PL	
9	219321	M4.30MM LG.POZI-PAN.SCREW.Z/PL	
10	320686	HANDLE BASE MOULDING (SOCKET) PLUS INSERTS	
	320954	HANDLE BASE MOULDING (SOCKET)+ INSERTS V2 (PLASTIC HEAD)	USA
11	219107	NO6.5/8 INCH LG.POZI-PAN.SCREW.Z/PL.PLASTITE	
12	206010	FAN GUARD	
13	202005	MOTOR BOTTOM GASKET	
14	227925	TOP MOTOR GASKET (LAMB BYPASS MOTOR)	
15	202012	GASKET	
16	219090	M4.8MM LG.POZI-PAN.SCREW.Z/PL.SEM.	
17	227636	STRAIN RELIEF ARM (SOCKET)	
18	227637	CABLE CLIP (SOCKET)	
19	220552	RED ROCKER SWITCH (WHITE PRINT)	
20	206573	SWITCH COVER (PLUG HANDLE)	
21	219546	M5.20MM LG.POZI-PAN.SCREW.Z/PL.SEM	
22	237069	LED HOLDER (DUSTCARE SYSTEM)	
23	323001	NDD COVER PROCESSED FOR LOW FLO LED	
24	321555	LOW FLOW LED LOOM	
25	220967	WINDOW PLUG (TYPE WP 750) HEYCO REF: 438 1309	
26	227631	TERMINAL COVER & CLAMP 3PIN	
27	206562	CONTACT PIN	
	206563	EARTH CONTACT PIN	USA
28	227635	SWITCH MOUNTING BRACKET 1 SWITCH	
29	236009	10.0MT X 1MM X 2 CORE CABLE (SOCKET + PLUG) UK	
	236123	10.0MT X 1MM X 2 CORE YELLOW CABLE (SOCKET + PLUG) EURO	
	236017	10.0MT X 1MM X 2 CORE CABLE (SOCKET + PLUG) SWISS	
	236063	10.0MT X 3CORE X 14AWG (YELLOW) SJTW 5-15P PLUG CSA	
30	301047	BOTTOM MOTOR HOUSING PUNCH NV/WV 14 INCH 900 SERIES	
31	325816	570 AIR SEPERATOR LAMB SIMPLEX (DRILLED)	
32	225167	SIMPLEX TOP MOTOR HOUSING	
	325129	SIMPLEX TOP MOTOR HOUSING MOD	USA
33	230177	230V NDS LOW FLOW BOARD	
34	220316	NHD2 TERMINAL BLOCK ELKAY	
35	202086	LOW FLOW PCB MOUNTING GASKET	
36	220558	SUPPRESSOR ASSEMBLY	UK
	230151	220V DUPLEX SUPPRESSOR ASSY (LAMB MOTOR)	EURO, SWISS
37	208025	SPACER BUCKET HANDLE WV575/750	
38	418512	BUCKET HANDLE CRANKED PNT BLACK	
39	502014	14 INCH WHITE FILTER ASSEMBLY	
40	219330	M5.12MM LG.POZI-PAN.SCREW.Z/PL.C/SUNK	
41	219045	M5.16MM LG.POZI-PAN.SCREW.Z/PL.SEM	
42	202102	BAYONET SEAL	
43	237342	BAG CONNECTOR TUBE	
44	237343	BAG CONNECTOR FRONT	
45	204060	3 INCH STEM FITTING CASTOR	
46	202027	HOSE FLANGE GASKET	
47	219105	NO8.5/8 INCH LG.POZI-PAN.SCREW.Z/PL.PLASTITE	
48	325132	572 GREY DRUM PUNCH & INSERT	
49	206135	TOGGLE FASTENER 30-1665 MSBL	
50	308028	DRUM LINER (FOR ASSEMBLY VIEW ONLY)	
51	237048	DRUM LINER (FOR ASSEMBLY VIEW)	
52	401447	DRUM BASE (FINE DUST VACUUM CLEANER) PAINTED GREY	

NOTE: ' * ' DENOTES USE OF
220395 TAB INSULATOR



NUMATIC INTERNATIONAL LTD. MILLFIELD ROAD CHARD SOMERSET TA20 2GB ENGLAND	
THIS DWG. IS COPYRIGHT AND IS THE PROPERTY OF NUMATIC INTERNATIONAL LTD. AND MUST NOT BE USED WITHOUT THEIR KNOWLEDGE NOR COMMUNICATED TO ANY PERSON OR COMPANY	
DIMNs IN:-	TITLE
_____	NDS SIMPLEX C/W LOW FLOW (LAMB MOTOR) (240V)
UNSPEC TOLs	MATERIAL
_____	_____
SCALE	FINISH
_____	_____
COMP NO	123357
DRG NO	DRW-5759

A01	NEW DRAWING	MCF	MJC	12/4/2010
ISS	REVISION	DRAWN	APPD.	DATE