

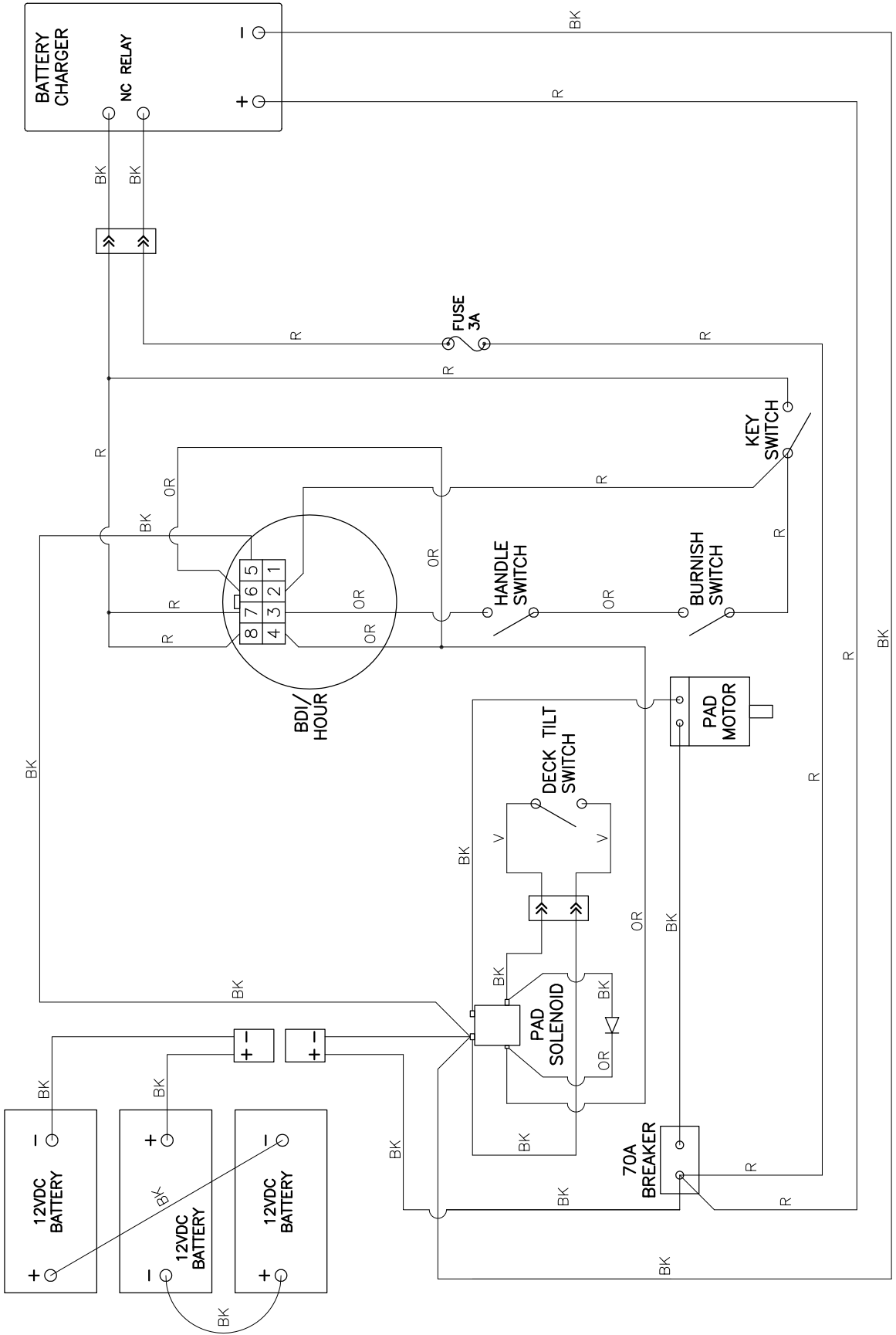


**UHS Battery Burnisher  
PE300BU  
Operator's Manual**



012015

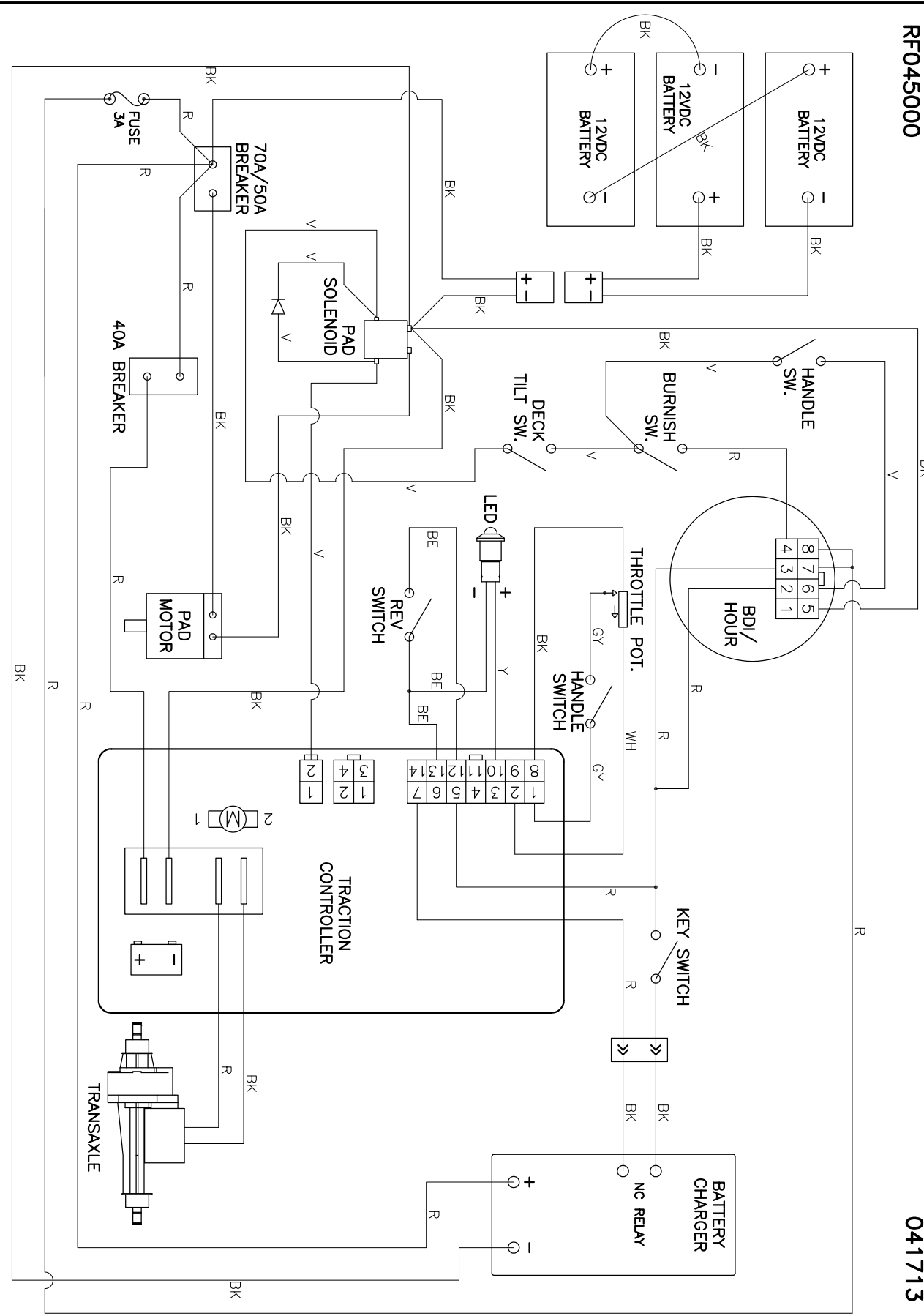
RF045100



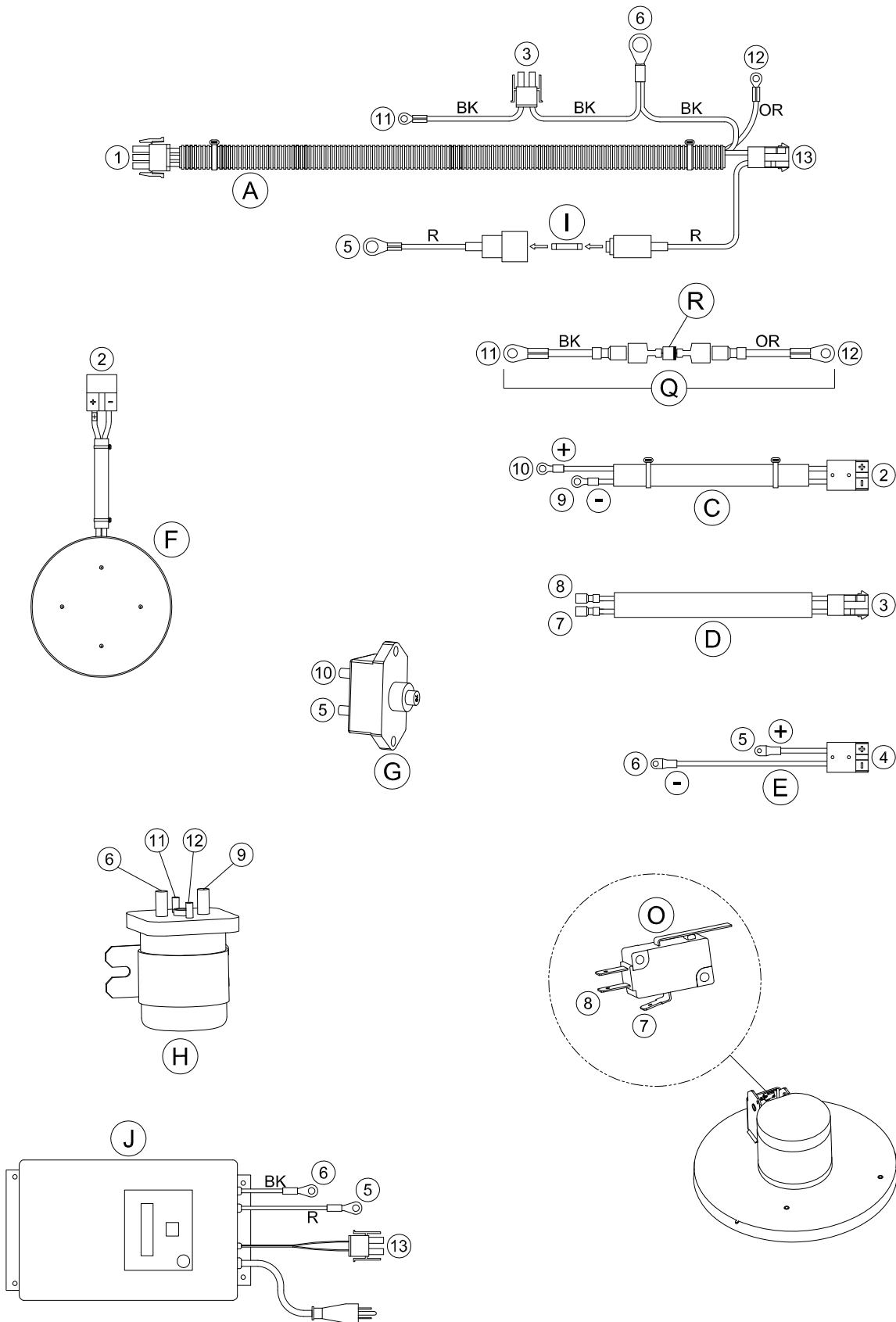
Electrical Schematic - Traction

RF045000

041713



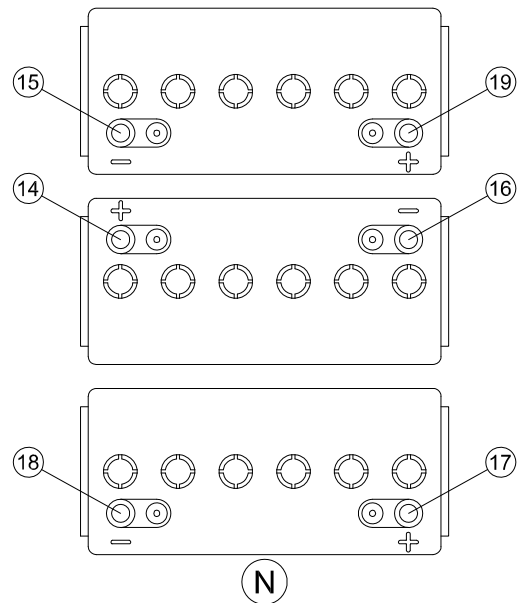
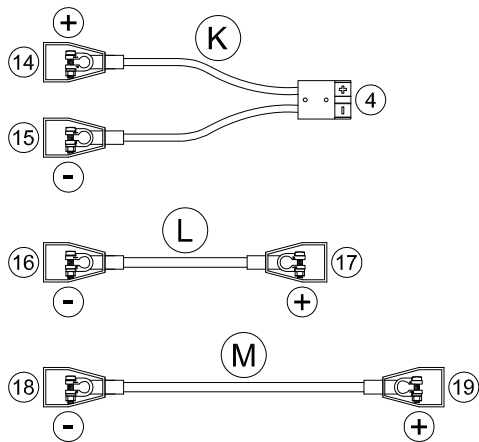
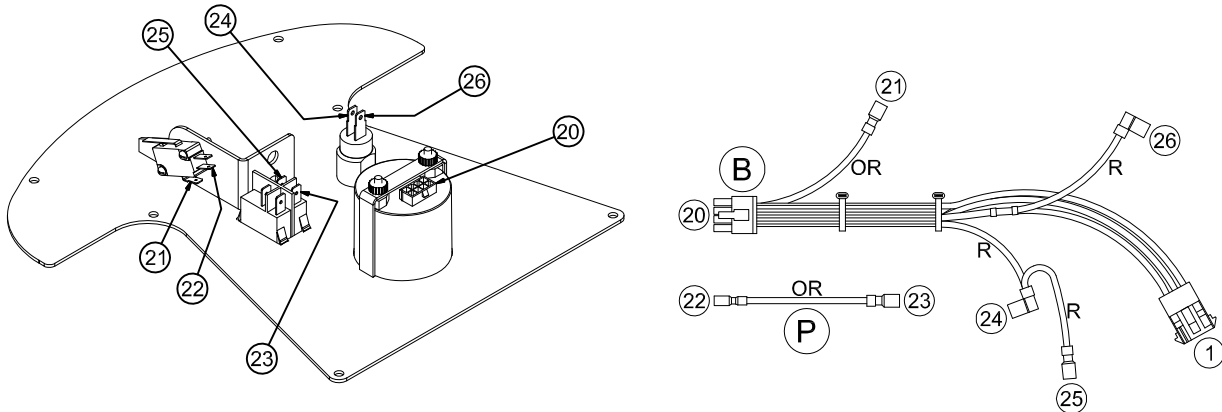
## Connections - Pad Assist



RF044700

032415

## Connections - Pad Assist (Continued)

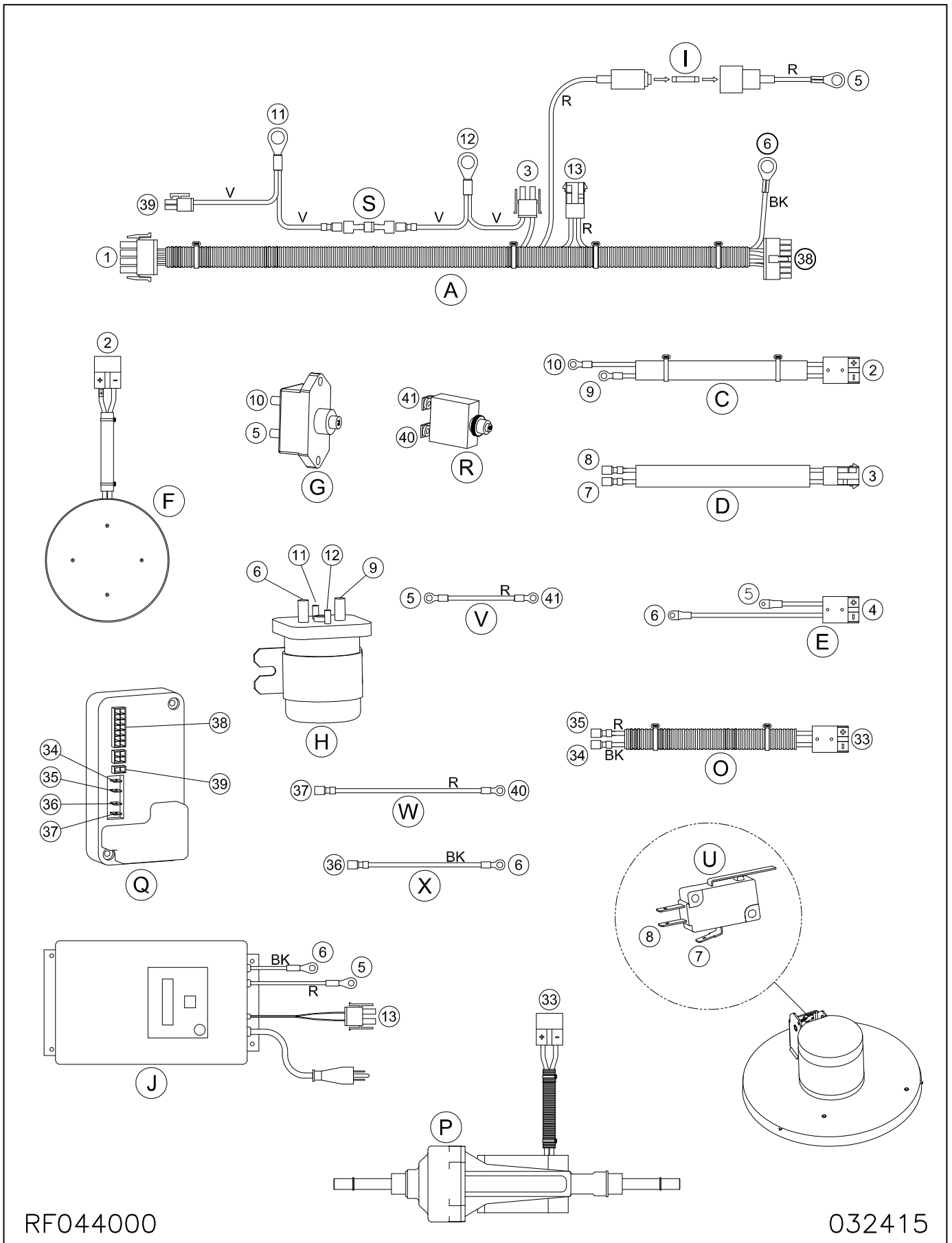


RF044700

032415

Item	Ref. No.	Description	Qty	Item	Ref. No.	Description	Qty
A	MP426500	HARNESS, MAIN, PAD ASSIST	1	K	MP279700	CABLE, BATTERY, w/ PLUG	1
B	MP426700	HARNESS, C.PANEL, PAD ASST.	1	L	MP238200	CABLE, BATTERY, 13.5"	1
C	MP426800	HARNESS, MOTOR, BURNISH	1	M	MP279800	CABLE, BATTERY	1
D	MP427000	HARNESS, SWITCH, TILT	1	N1	MP223500	BATTERY, 12V, LEAD ACID	3
E	MP427200	CABLE, BATTERY, SOLENOID	1	N2	MP413600	BATTERY, 12V, SEALED	3
F1	MP424200	MOTOR, 2000 RPM, ASM. (20"/30")	1	O	MP318400	SWITCH, MICRO, 12V	1
F2	MP434100	MOTOR, 1800 RPM, ASM. (24")	1	P	MP427800	WIRE, SWITCH, 3"	1
G	MP414800	BREAKER, CIRCUIT, 70A	1	Q	MP482400	WIRE, DIODE, ASM.	1
H	MP207000	SOLENOID, 36VDC, SPNO	1	R	MP254600	DIODE, 6A, ASM.	1
I	MP234700	FUSE, 3A, GLASS	1				
J1	SA027500	CHARGER, 110V, 36V, ASM.	1				
J2	SA027600	CHARGER, 220V, 36V, ASM.	1				

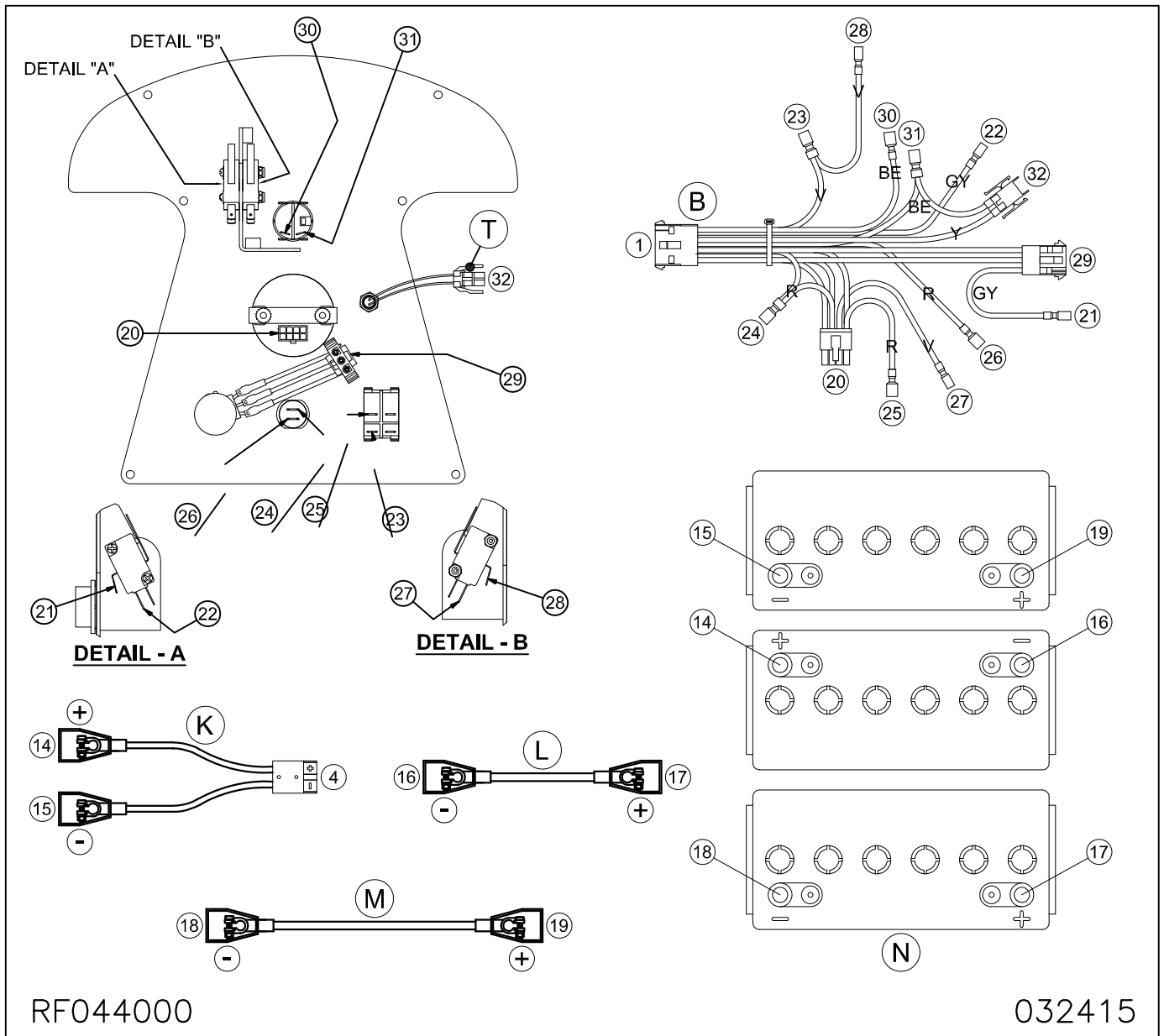
## Connections - Traction



RF044000

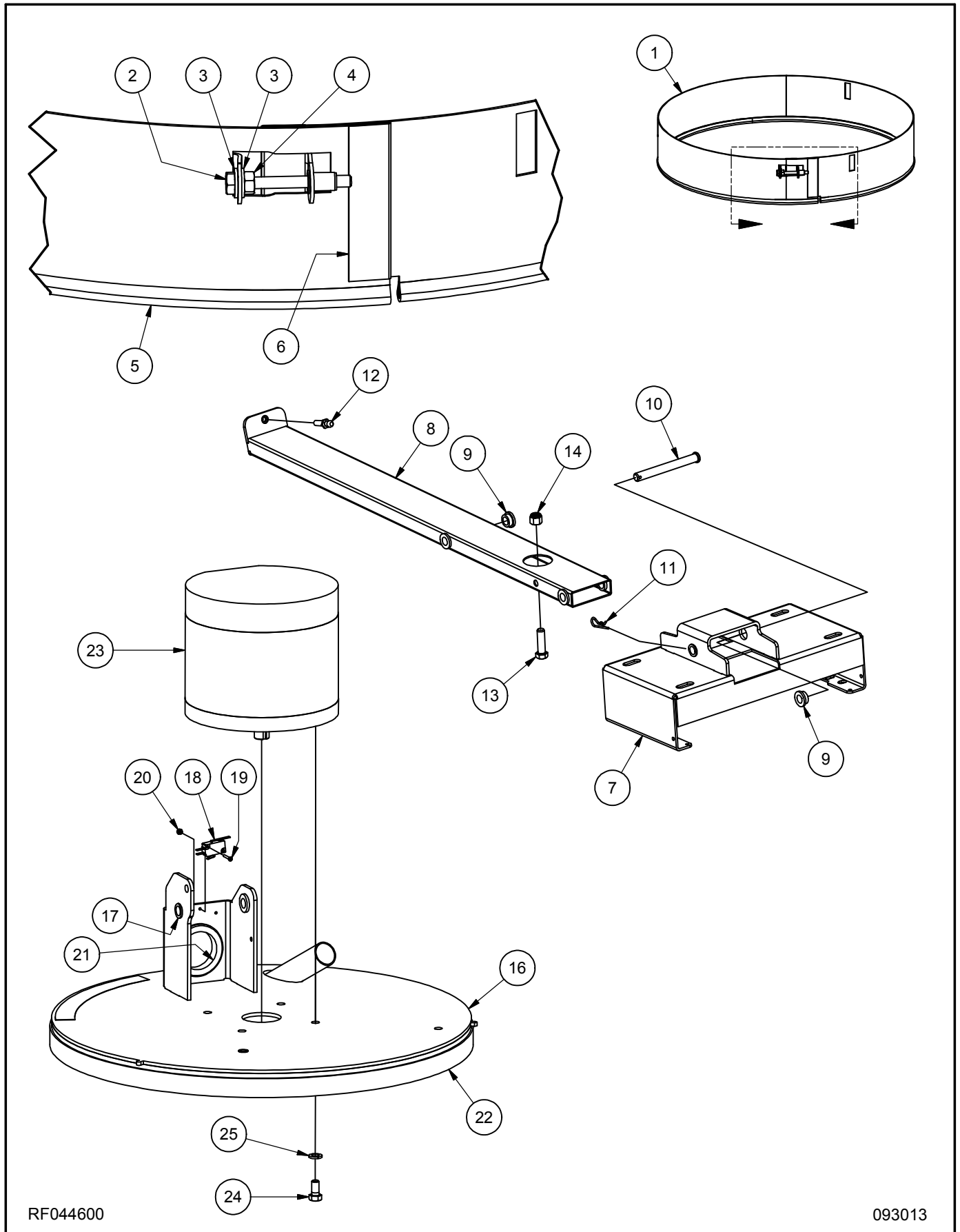
032415

## Connections - Traction (Continued)



Item	Ref. No.	Description	Qty	Item	Ref. No.	Description	Qty
A	MP432200	HARNESS, MAIN, TRACTION	1	M	MP279800	CABLE, BATTERY	1
B	MP432100	HARNESS, C.PANEL, TRACTION	1	N1	MP223500	BATTERY, 12V, LEAD ACID	3
C	MP426800	HARNESS, MOTOR, BURNISH	1	N2	MP413600	BATTERY, 12V, SEALED	3
D	MP427000	HARNESS, SWITCH, TILT	1	O	MP426900	HARNESS, WIRING, TR. AXLE	1
E	MP427200	CABLE, BATTERY, SOLENOID	1	P	MP424500	TRANSAXLE, 36V, ASM.	1
F1	MP424200	MOTOR, 2000 RPM, ASM. (20"/30")	1	Q	MP409401	CONTROLLER, TRACTION	1
F2	MP434100	MOTOR, 1800 RPM, ASM. (24")	1	R	MP414900	BREAKER, CIRCUIT, 40A	1
G	MP414800	BREAKER, CIRCUIT, 70A	1	S	MP254600	DIODE, 6A, ASM.	1
H	MP207000	SOLENOID, 36VDC, SPNO	1	T	SA028000	LED, RED, REPLACEMENT	1
I	MP234700	FUSE, 3A, GLASS	1	U	MP318400	SWITCH, MICRO, 12V	1
J1	SA027500	CHARGER, 110V, 36V, ASM.	1	V	MP427500	WIRE, 10AWG, RED, 3"L	1
J2	SA027600	CHARGER, 220V, 36V, ASM.	1	W	MP427600	WIRE, 10AWG, REG, 16"L	1
K	MP279700	CABLE, BATTERY, w/ PLUG	1	X	MP427700	WIRE, 10AWG, BLK, 12"L	1
L	MP238200	CABLE, BATTERY, 13.5"	1				

**Skirt, Deck & Axle Bracket Assembly**



RF044600

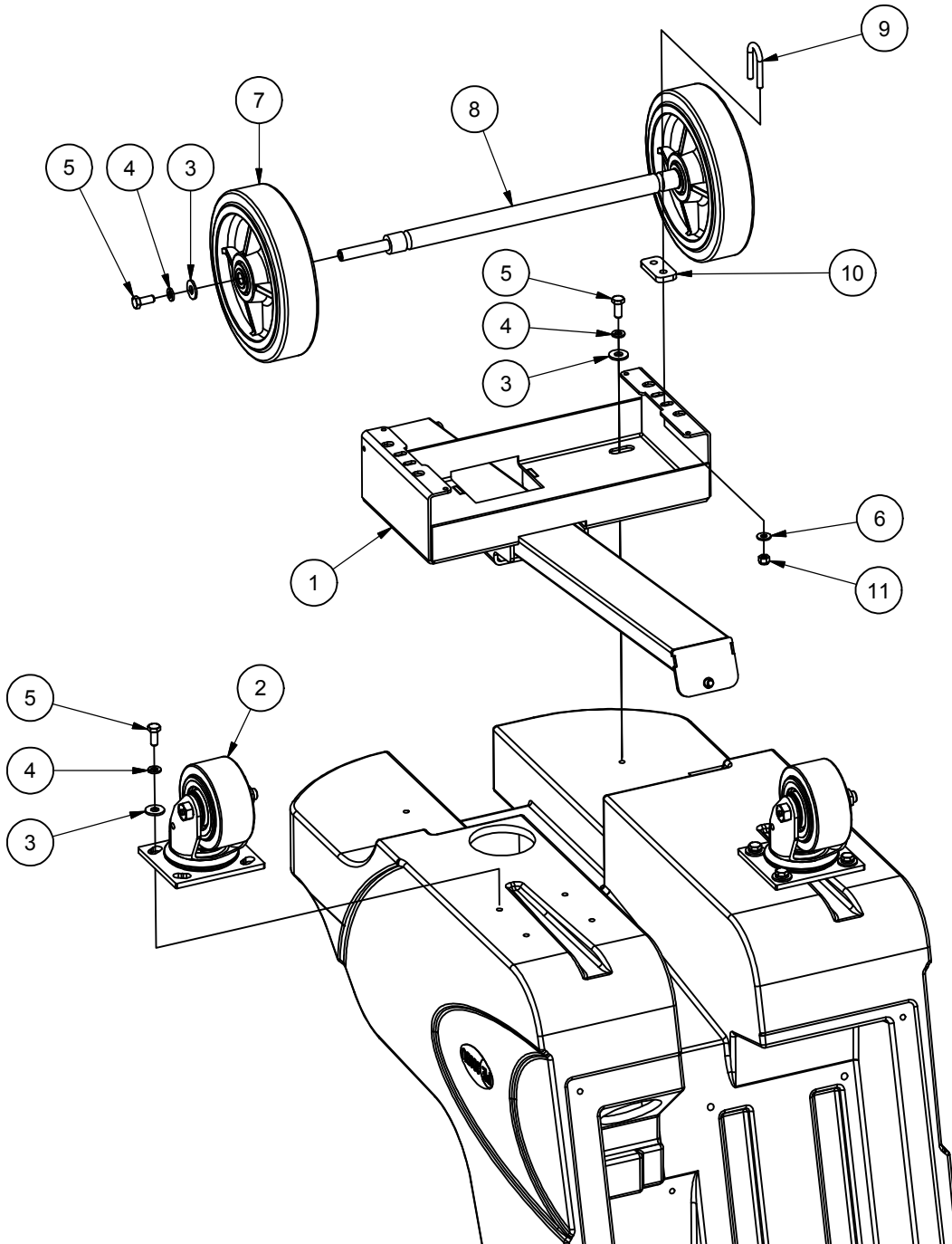
093013



**Skirt, Deck & Axle Bracket Assembly (continued)**

<u>Item</u>	<u>Ref. No.</u>	<u>Description</u>	<u>Qty</u>	<u>Item</u>	<u>Ref. No.</u>	<u>Description</u>	<u>Qty</u>
1A	MP425200	SKIRT, 20", ASM.	1	14A	NB014600	NUT, LOCK, 1/2" (20")	1
1B	MP434200	SKIRT, 24", ASM.	1	14B	NB067700	NUT, LOCK, 7/16" (24")	1
2	NB050600	BOLT, HEX, 1/4" X 2-1/2"	1	15	N/A	N/A	-
3	NB3350	WASHER, FLAT, 1/4"	2	16A	MP432600	SHROUD, 20", ASM.	1
4	MX1045	NUT, HEX, 1/4"	1	16B	MP438800	SHROUD, 24", ASM.	1
5A	MP139800	EDGING, WEAR, SKIRT (20")	6 FT	17	MP237100	BUSHING, FLANGED, 1/2"	2
5B	MP139800	EDGING, WEAR, SKIRT (24")	7 FT	18	MP318400	SWITCH, MICRO, 12V	1
6	MP6600	FELT, VELCRO, BLK, 2"	2 (4")	19	NB9625	SCREW, #4 X 3/4"	2
7	MP423700	BRACKET, AXLE / TRANSAXLE	1	20	NB007000	NUT, LOCK, #4	2
8	MP423800	TUBE, MOUNT, SHROUD	1	21	NB043800	GROMMET, 2" ID	1
9	MP237100	BUSHING, FLANGED, 1/2"	6	22A	MP415100	FELT, VELCRO, BLK, 1" (20")	6 FT
10	NB039704	PIN, CLEVIS, 1/2" X 4-1/2"	1	22B	MP415100	FELT, VELCRO, BLK, 1" (24")	7 FT
11	NB025600	PIN, PRESTO, 3/32" X 1-5/8"	1	23A	MP424200	MOTOR, 2000 RPM, ASM. (20"/30")	1
12	MP414300	BALL, STUD, 10MM	1	23B	MP434100	MOTOR, 1800 RPM, ASM. (24")	1
13A	NB068900	BOLT, HEX, 1/2" X 1-1/2" (20")	1	24	NB6851	BOLT, HEX, 3/8" X 3/4"	4
13B	NB068800	BOLT, HEX, 7/16" X 1-1/2" (24"/ 30")	1	25	MX1075	WASHER, LOCK, 3/8"	4

Main Bottom Assembly - Pad Assist



RF044500

073112

**Main Bottom Assembly - Pad-Assist (continued)**

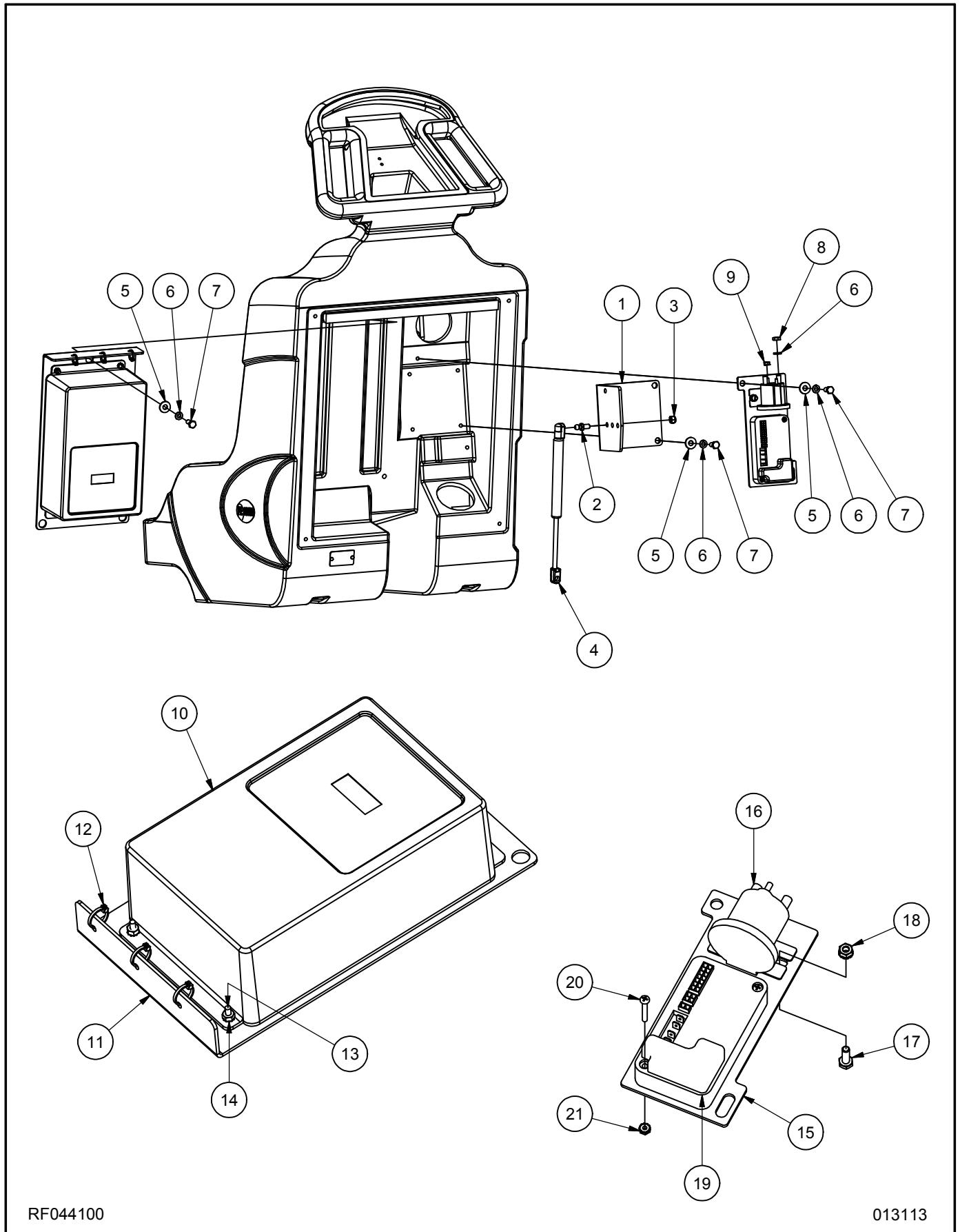
<u>Item</u>	<u>Ref. No.</u>	<u>Description</u>	<u>Qty</u>
1A	MP424400	BRACKET, AXLE, ASM. (20")	1
1B	MP440800	BRACKET, AXLE, ASM. (24")	1
2	MP432500	CASTER, 4", w/ BRAKE	2
3	NB9267	WASHER, FLAT, 5/16"	14
4	NB6111	WASHER, LOCK, 5/16"	14
5	NB9745	BOLT, HEX, 5/16" X 3/4"	14
6	NB3350	WASHER, FLAT, 1/4"	4
7	MP409900	WHEEL, 8" X 2"	2
8	MP423500	AXLE	1
9	NB061600	BOLT, U, 1/4"	2
10	MP425301	SPACER, AXLE	2
11	NB3275	NUT, LOCK, 1/4"	4



**Main Bottom Assembly - Traction (continued)**

<u>Item</u>	<u>Ref. No.</u>	<u>Description</u>	<u>Qty</u>
1A	MP424400	BRACKET, AXLE, ASM. (20")	1
1B	MP440800	BRACKET, AXLE, ASM. (24")	1
2	MP424500	TRANSAXLE, 36V, ASM.	1
3	PG001801	BRACKET, TRANSAXLE	2
4	NB6545	BOLT, HEX, 5/16" X 1"	4
5	NB3265	NUT, LOCK, 5/16"	4
6	BA003300	KEY, 3/16" X 1-1/2"	2
7	NB018500	RING, RETAINING, 3/4"	2
8	MP409800	WHEEL, 8" X 2"	2
9	NB9302	SCREW, SET, 1/4" X 3/8"	4
10	NB9505	WASHER, FLAT, 5/16" X 1-1/2"	2
11	MP432500	CASTER, 4", w/ BRAKE	2
12	NB9267	WASHER, FLAT, 5/16"	20
13	NB6111	WASHER, LOCK, 5/16"	14
14	NB9745	BOLT, HEX, 5/16" X 3/4"	14

# Main Rear Assembly



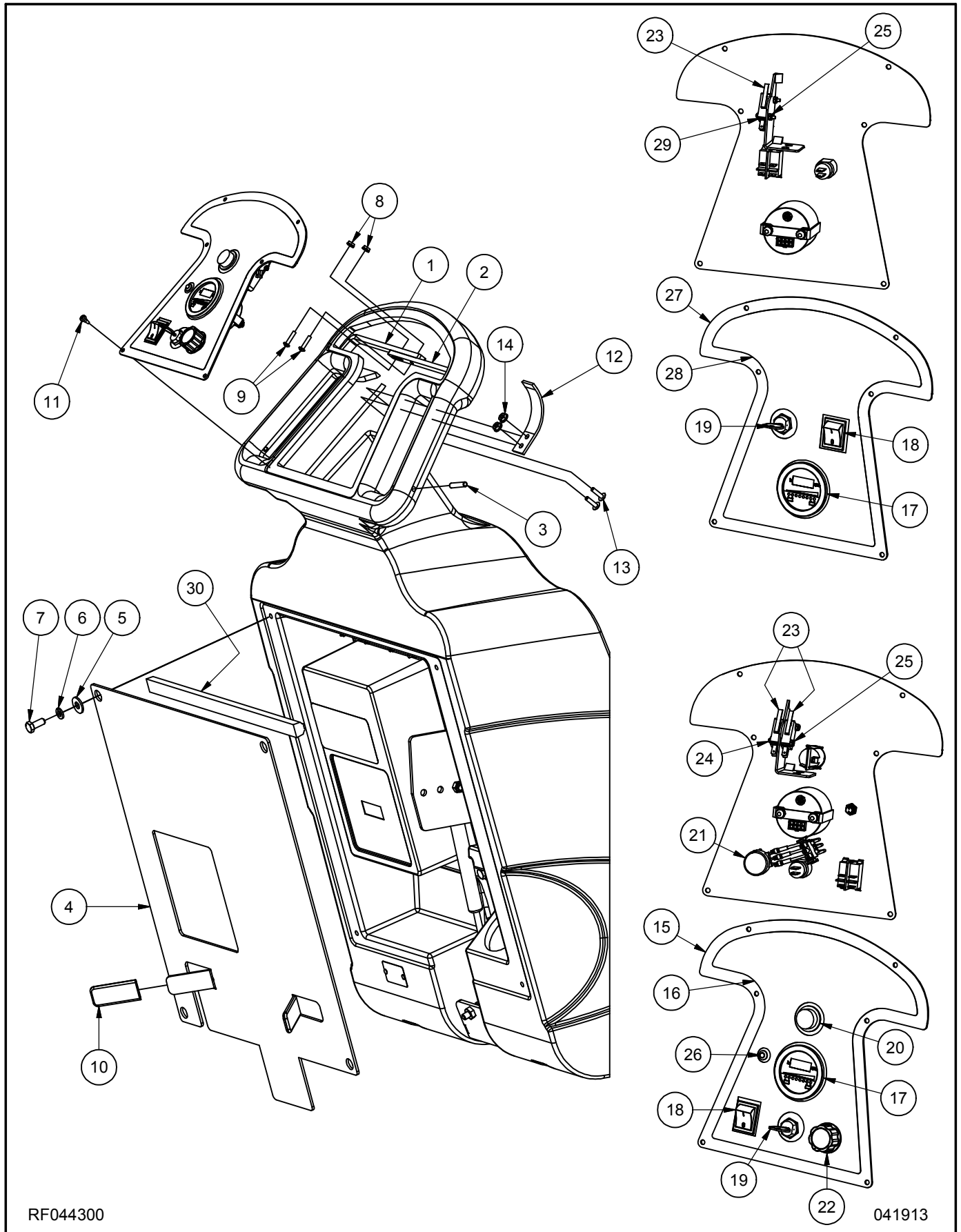
RF044100

013113

**Main Rear Assembly (continued)**

<u>Item</u>	<u>Ref. No.</u>	<u>Description</u>	<u>Qty</u>	<u>Item</u>	<u>Ref. No.</u>	<u>Description</u>	<u>Qty</u>
1	MP422901	PLATE, MOUNT, SHOCK	1	11	MP423101	PLATE, MOUNT, CHARGER	1
2	MP206000	BALL, STUD, 10MM	1	12	NB6035	TIE, CABLE, 1/8" X 4"	3
3	NB3265	NUT, LOCK, 5/16"	1	13	NB040400	SCREW, PH, #10 X 3/4"	4
4A	MP415200	SPRING, GAS (20")	1	14	NB006600	NUT, KEPS, #10	4
4B	MP434500	SPRING, GAS (24")	1	15	MP423001	PLATE, MOUNT, SOLENOID	1
4C	MP450300	SPRING, GAS (30")	1	16	MP207000	SOLENOID, 36VDC, SPNO	1
5	NB9267	WASHER, FLAT, 5/16"	9	17	NB6535	BOLT, HEX, 1/4" X 3/4"	2
6	NB6111	WASHER, LOCK, 5/16"	11	18	NB9845	NUT, KEPS, 1/4"	2
7	NB9745	BOLT, HEX, 5/16" X 3/4"	9	19	MP409401	CONTROLLER, TRACTION	1
8	NB005700	NUT, JAM, 5/16"	2	20	MX1011	SCREW, #8 X 1-1/4" (TRACTION)	2
9	NB006600	NUT, KEPS, #10	2	21	NB9710	NUT, KEPS, #8 (TRACTION)	2
10A	SA027500	CHARGER, 110V, 36V, ASM.	1				
10B	SA027600	CHARGER, 220V, 36V, ASM.	1				

# Main Top Assembly



RF044300

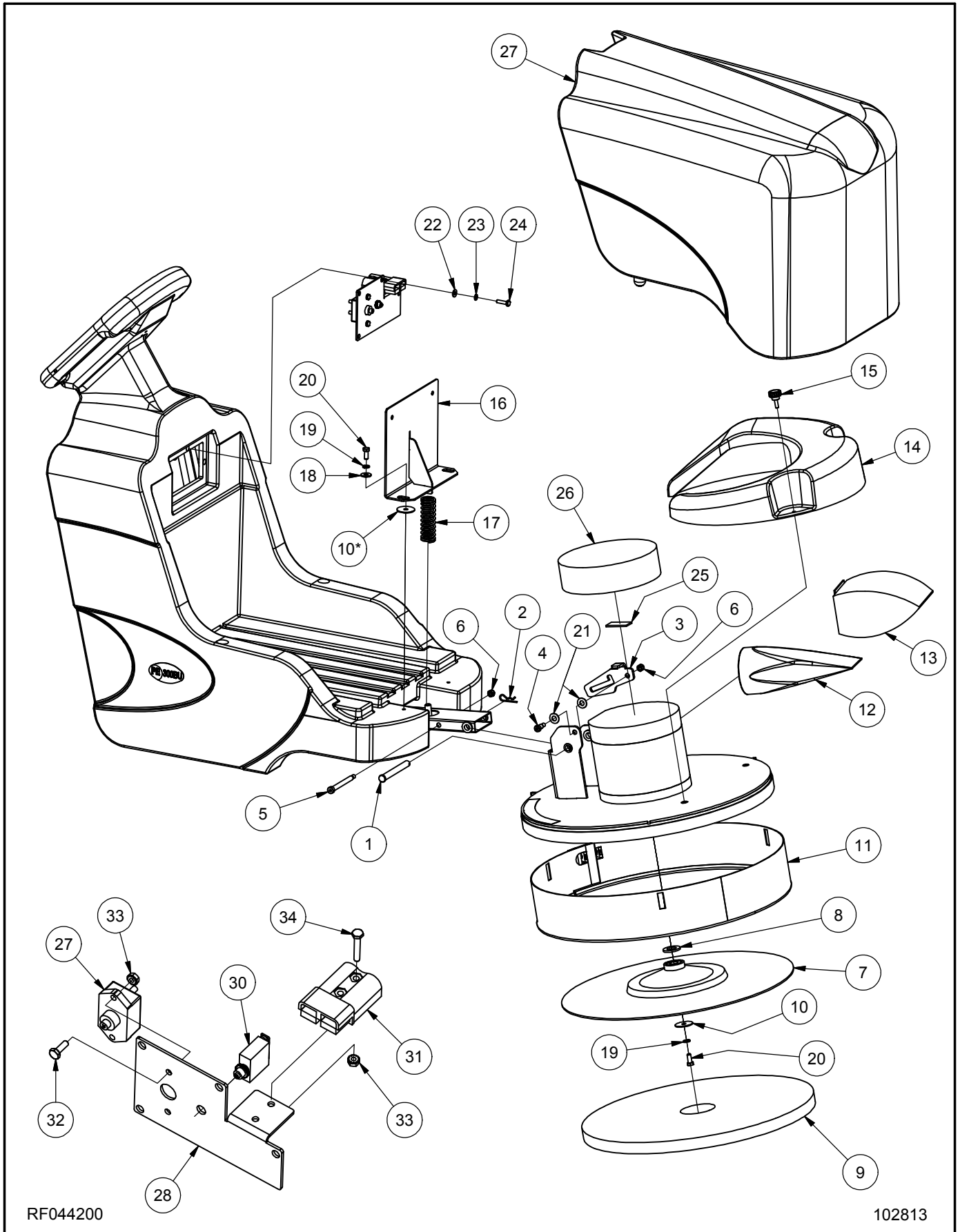
041913



**Main Top Assembly (continued)**

<u>Item</u>	<u>Ref. No.</u>	<u>Description</u>	<u>Qty</u>	<u>Item</u>	<u>Ref. No.</u>	<u>Description</u>	<u>Qty</u>
1	MP423201	LEVER, HANDLE, LEFT	1	17	MP414501	METER, HOUR / BATTERY	1
2	MP423202	LEVER, HANDLE, RIGHT	1	18	MP414600	SWITCH, ROCKER, DPST	1
3	NB6390	PIN, ROLL, 1/4" X 1-1/8"	2	19A	MP411300	SWITCH, 36V	1
4	MP431401	PLATE, COVER, REAR	1	19B	KC4834001	KEY, SWITCH (NOT SHOWN)	1
5	NB9267	WASHER, FLAT, 5/16"	4	20	MP415000	SWITCH, PUSH (TRACTION)	1
6	NB6111	WASHER, LOCK, 5/16"	4	21	PG016400	POTENTIOMETER (TRACTION)	1
7	NB9745	BOLT, HEX, 5/16" X 3/4"	4	22	MP418000	KNOB (TRACTION)	1
8	NB9710	NUT, KEPS, #8	2	23	MP318400	SWITCH, MICRO, 12V	1
9	NB041200	SCREW, PH, #8 X 3/4"	2	24	NB051000	SCREW, #4 X 1"	2
10	MP077400	COVER, VINYL	2	25	NB007000	NUT, LOCK, #4	4
11	NB043600	SCREW, PH, #8 X 3/8"	6	26	SA028000	LED, RED, 36V	1
12	MP432900	SPRING, LEVER, HANDLE	1	27	MP424100	PANEL, CONTROL, PAD ASSIST	1
13	MX1025	SCREW, PH, #10 X 3/4"	2	28	MP426300	DECAL, C.PANEL, PAD ASSIST	1
14	NB9510	NUT, FLANGE, #10	2	29	NB9625	SCREW, #4 X 3/4"	2
15	MP431600	PANEL, CONTROL, TRACTION	1	30	MP038300	MOLDING, TRIM	16"
16	MP426200	DECAL, C.PANEL, TRACTION	1				

# Main Front Assembly



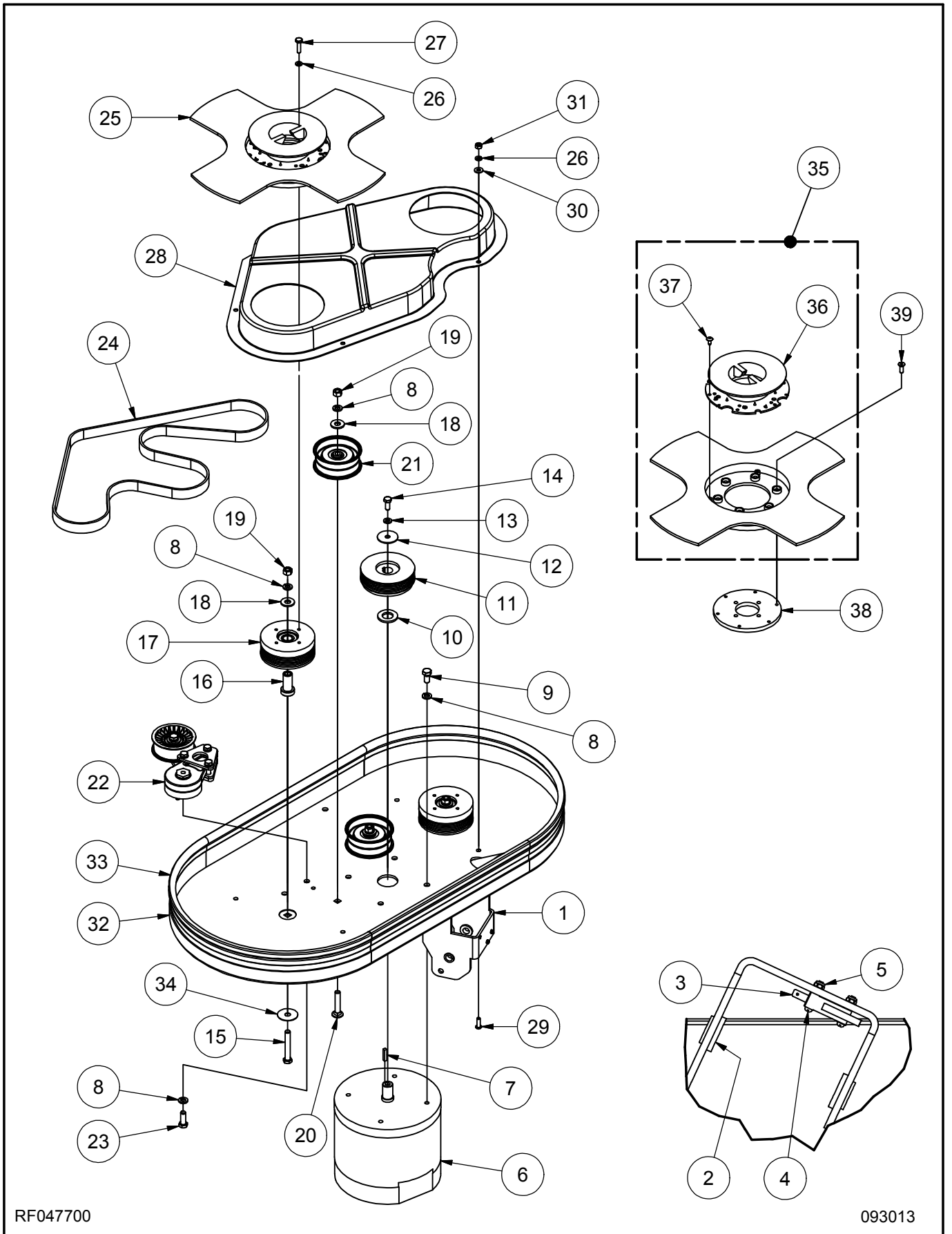
RF044200

102813

**Main Front Assembly (continued)**

<u>Item</u>	<u>Ref. No.</u>	<u>Description</u>	<u>Qty</u>	<u>Item</u>	<u>Ref. No.</u>	<u>Description</u>	<u>Qty</u>
1	NB039704	PIN, CLEVIS, 1/2" X 4-1/2"	1	18	NB9267	WASHER, FLAT, 5/16"	2
2	NB025600	PIN, PRESTO, 3/32" X 1-5/8"	1	19	NB6111	WASHER, LOCK, 5/16"	3
3	MP423301	LATCH, TILT	1	20	NB9745	BOLT, HEX, 5/16" X 3/4"	3
4	NB026200	BOLT, SHLD, 3/8" X 1/2"	1	21	NB025200	WASHER, FLAT, 3/8"	2
5	NB038600	BOLT, SHLD, 3/8" X 3-1/2"	1	22	NB3350	WASHER, FLAT, 1/4"	4
6	NB3265	NUT, LOCK, 5/16"	2	23	NB6110	WASHER, LOCK, 1/4"	4
7A	MP414000	PAD HOLDER, 20"	1	24	NB6530	BOLT, HEX, 1/4" X 1"	4
7B	MP435000	PAD HOLDER, 24"	1	25	MP8300	HOOK, VELCRO, 1"	2"
7C	MP432400	RETAINER, PAD (NOT SHOWN)	1	26	MP464800	FILTER, DUST, MOTOR	1
8	NB018600	WASHER, FLAT, 3/4"	1	27	MP432700	COVER, BATTERY, ASM.	1
9	N/A	N/A	-	28	MP422801	PLATE, MOUNT, PLUG	1
10	NB9505	WASHER, FLAT, 5/16" X 1-1/2"	1	29	MP414800	BREAKER, CIRCUIT, 70A	1
11A	MP425200	SKIRT, 20", ASM.	1	30	MP414900	BREAKER, CIRCUIT, 40A (TRAC.)	1
11B	MP434200	SKIRT, 24", ASM.	1	31	MP427200	CABLE, BATTERY, SOLENOID	1
12	MP414100	BAG, DUST, CLOTH	1	32	NB6535	BOLT, HEX, 1/4" X 3/4"	2
13	MP414200	BAG, DUST, PAPER	1	33	NB9845	NUT, KEPS, 1/4"	4
14	MP431300	COVER, BAG, DUST	1	34	NB9000	BOLT, HEX, 1/4" X 1-1/2"	2
15	MP155600	KNOB, 1/4" X 3/4"	2				
16	MP423900	RETAINER, BATTERY	1				
17A	MP415300	SPRING, COMP., .90" ID (20")	1				
17B	MP434400	SPRING, COMP., .81" ID (24")	1				
17C	MP448800	SPRING, COMP., .83" ID (30")	1				

# 30" Deck Assembly



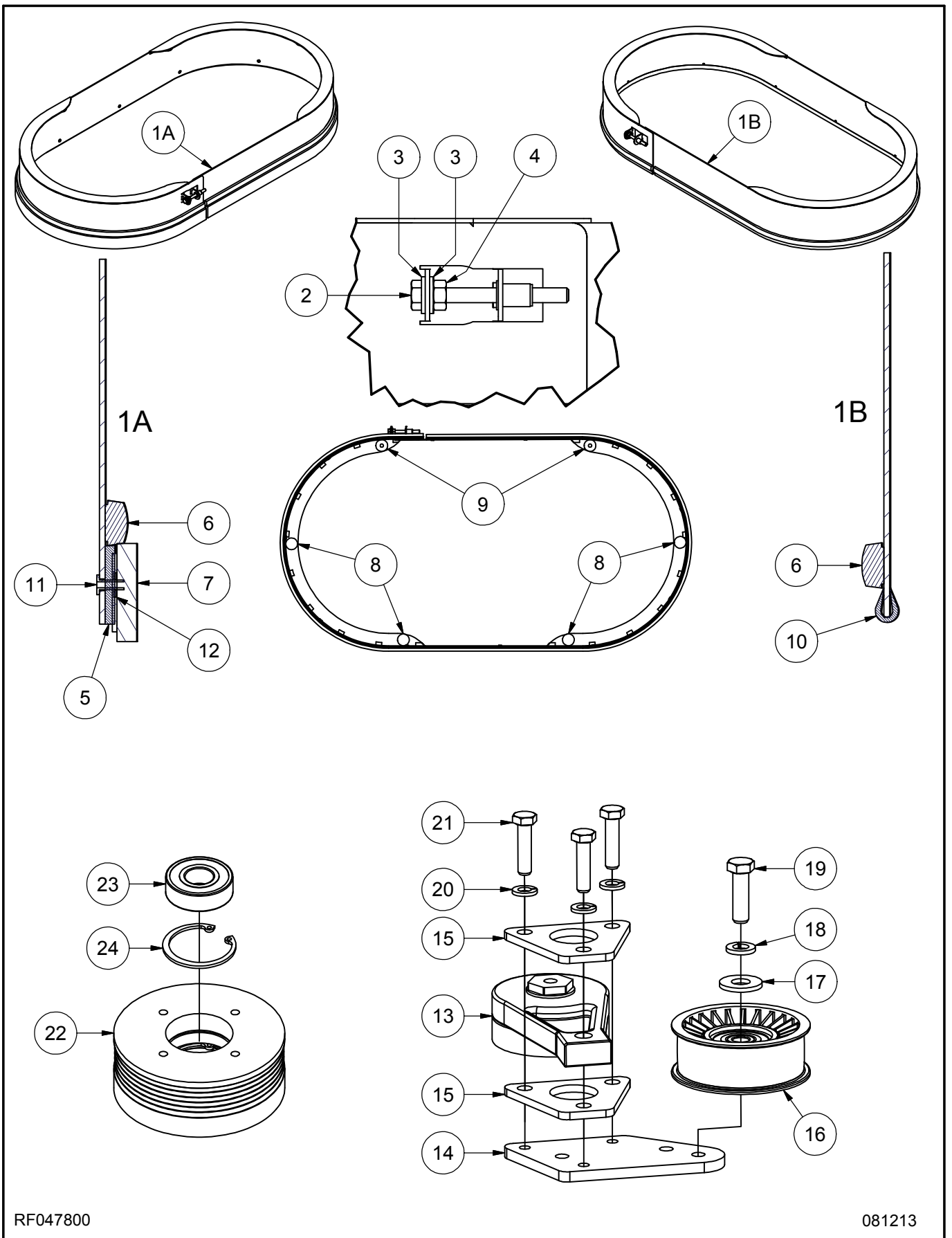
RF047700

093013

### 30" Deck Assembly (continued)

<u>Item</u>	<u>Ref. No.</u>	<u>Description</u>	<u>Qty</u>	<u>Item</u>	<u>Ref. No.</u>	<u>Description</u>	<u>Qty</u>
1	MP456700	SHROUD, 30", ASM.	1	21	MP262400	IDLER, FLAT, 3.2"	2
2	MP237100	BUSHING, FLANGED, 1/2"	2	22	MP449500	TENSIONER, BELT, ASM.	1
3	MP318400	SWITCH, MICRO, 12V	1	23	NB6042	BOLT, HEX, 3/8" X 1"	1
4	NB9625	SCREW, #4 X 3/4"	2	24	MP449100	BELT, K060620	1
5	NB007000	NUT, LOCK, #4	2	25	MP450100	PAD HOLDER, 16", ASM.	2
6	MP424200	MOTOR, 2000 RPM, ASM.	1	26	NB6110	WASHER, LOCK, 1/4"	12
7	BA003200	KEY, 3/16" X 1"	1	27	NB6530	BOLT, HEX, 1/4" X 1"	8
8	MX1075	WASHER, LOCK, 3/8"	9	28	MP454100	COVER, BELT, ASM.	1
9	NB6851	BOLT, HEX, 3/8" X 3/4"	4	29	NB049000	SCREW, BH, 1/4" X 3/4"	4
10	NB018600	WASHER, FLAT, 3/4"	1	30	NB3350	WASHER, FLAT, 1/4"	4
11	MP445600	PULLEY, 4"	1	31	MX1045	NUT, HEX, 1/4"	4
12	NB9505	WASHER, FLAT, 5/16" X 1-1/2"	1	32	MP415100	FELT, VELCRO, 1"	87"
13	NB6111	WASHER, FLAT, 5/16"	1	33	MP285500	SEAL, TRIM, w/ BULB	87"
14	NB9745	BOLT, HEX, 5/16" X 3/4"	1	34	NB034800	WASHER, FLAT, 3/8" X 1-1/2"	2
15	NB1588	BOLT, HEX, 3/8" X 2-1/2"	2	35	MP448100	PAD HOLDER, 16"	1
16	MP453300	SPACER, PULLEY	2	36	MP432400	RETAINER, PAD	1
17	MP453500	PULLEY, 4", ASM.	2	37	NB064900	SCREW, #10 X 1/2"	3
18	NB3450	WASHER, FLAT, 3/8"	4	38	MP448301	PLATE, PAD HOLDER, ADAPTER	1
19	NB046200	NUT, HEX, 3/8"	4	39	NB068200	SCREW, SH, 1/4" X 3/4"	6
20	NB010100	BOLT, CARRIAGE, 3/8" X 2"	2				

30" Skirt, Pulley & Tensioner Assembly



RF047800

081213

**30" Skirt, Pulley & Tensioner Assembly (continued)**

<u>Item</u>	<u>Ref. No.</u>	<u>Description</u>	<u>Qty</u>	<u>Item</u>	<u>Ref. No.</u>	<u>Description</u>	<u>Qty</u>
1A	MP456300	SKIRT, 30", ASM. (w/ FELT)	1	13	MP449000	BODY, TENSIONER	1
1B	MP459800	SKIRT, 30", ASM. (w/ EDGING)	1	14	MP452401	PLATE, EXT., TENSIONER	1
2	NB050600	BOLT, HEX, 1/4" X 2-1/2"	1	15	MP448501	PLATE, MOUNT, TENSIONER	2
3	NB3350	WASHER, FLAT, 1/4"	2	16	MP448900	IDLER, FLAT, 3.24" X 1"	1
4	MX1045	NUT, HEX, 1/4"	1	17	NB3450	WASHER, FLAT, 3/8"	1
5	MP8300	HOOK, VELCRO, 1"	90"	18	MX1075	WASHER, LOCK, 3/8"	1
6	MP449300	MOLDING, BLK	90"	19	NB051800	BOLT, HEX, 3/8" X 1-1/4"	1
7	MP449200	EDGE, WEAR, FELT	1	20	NB6111	WASHER, LOCK, 5/16"	3
8	MP140000	DOT, FELT	4	21	NB001800	BOLT, HEX, 5/16" X 1-1/4"	3
9	MP373100	WASHER, RUBBER	2	22	MP453400	PULLEY, 4"	1
10	MP139800	EDGING, WEAR	90"	23	MP453200	BEARING, 6203	2
11	NB023600	RIVET, 1/8" X 5/16"	12	24	NB017000	RING, RETAINING, 40MM	2
12	NB048300	WASHER, FLAT, #4	12				