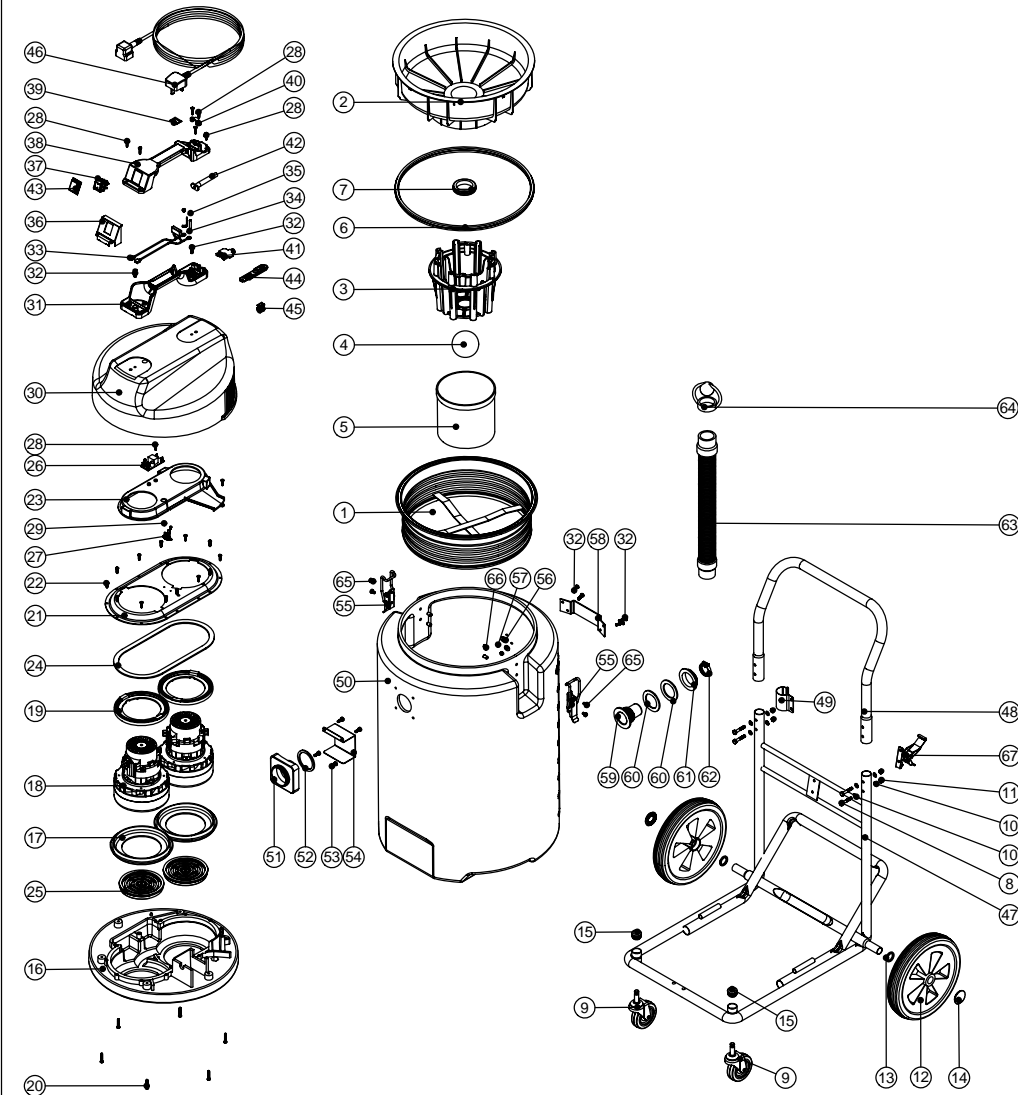


Numatic International Spare Parts

Model No: WVD2000-2 EXPLODED DRAWING

234348
DRAWING: EXP-0779 ISS:A02
30/06/2008



Numatic International Spare Parts

Model No: WVD2000-2 EXPLODED DRAWING

POS.	ITEM NO.	DESCRIPTION:	COMMENTS:
1	207030	WHITE FILTER ASSEMBLY	
2	225101	FLOAT MOULDING	
3	225130	MOULDED FLOAT CAGE	
4	206026	POLYPROP BALL	
5	207073	GAUZE FILTER	
6	202036	FLOAT MOULD EXTRUSION SEAL	
7	220235	FLOAT GROMMET	
8	219064	M6 X 35MM LONG HEX BOLT	
9	204060	3 INCH CASTOR	
10	219007	M6 FORM B WASHER	
11	219080	M6 DOMENUT	
12	204028	10 INCH WHEEL	
13	219505	NYLON WASHER	
14	219504	STARLOCK PUSH ON FASTENER	
15	20637V	25.4MM TUBE END STOP	
16	301048	PROCESSED BOTTOM MOTOR HOUSING	
17	202005	MOTOR BOTTOM GASKET	
18	205411	240V 2 STAGE D.I BYPASS ACUSTEK MOTOR (BL21104)(MARKED 230V)	
	205410	220V 2 STAGE D.I BYPASS ACUSTEK MOTOR (BL21102)(MARKED 230V)	
	205409	120V 2 STAGE D.I BYPASS ACUSTEK MOTOR (BL21101)	
19	227925	TOP MOTOR GASKET	
20	219369	No8 X 1 INCH LONG POZI PAN STAINLESS STEEL PLASTITE SCREW	
21	325526	TOP MOTOR HOUSING (DUPLEX)	
22	219370	No8 X 5/8 INCH LONG PLASTITE STAINLESS STEEL SCREW	
23	227928	570 AIR SEPERATOR (LAMB BYPASS MOTOR DUPLEX)	
24	202012	GASKET	
25	206010	FAN GUARD	
26	220555	230V DELAY START MODULE	
	220556	115V DELAY START MODULE	
27	220532	THERMOSTAT	
28	219107	No6 X 5/8 INCH LONG POZI PAN PLASTITE SCREW	
29	219491	M5 X 3MM LONG POZI PAN TAPTITE SCREW	
30	227043	COVER MOULDING	
31	320686	HANDLE BASE MOULDING	
32	219546	M5 X 20MM LONG POZI PAN SEMS SCREW	
33	220142	SUPPRESSOR ASSEMBLY	
34	206562	CONTACT PIN	
35	219090	M4 X 8MM LONG POZI PAN SEMS SCREW	
36	227635	SWITCH MOUNTING BRACKET (1 SWITCH)	
37	220843	BLUE ROCKER SWITCH	
38	227625	HANDLE COVER (10AMP / 2 PIN / 1 SWITCH)	
	227627	HANDLE COVER HARD WIRE 1 SWITCH	
39	202000	TERMINAL GASKET	
40	227564	PLUG LOCATION CLAMP	
41	227632	TERMINAL COVER & CLAMP	
42	220923	STRESS RELIEF	
43	206573	SWITCH COVER (PLUG HANDLE)	
44	227636	STRAIN RELIEF	
45	227637	CABLE CLIP	
46	236009	10.0M X 1.00MM X 2 CORE NUCABLE (UK PLUG)	
	236123	10.0MT X 1MM X 2 CORE YELLOW CABLE (SOCKET + PLUG) EURO	
	236017	10.0M X 1.00MM X 2 CORE NUCABLE (SWISS PLUG)	
	236021	10.0M X 1.00MM X 2 CORE NUCABLE (SOUTH AFRICAN PLUG)	
	236029	10.0M X 1.00MM X 2 CORE NUCABLE (AUSTRALIAN PLUG)	
	236065	10.0M X 2 CORE X 2.5MM CABLE PLUS 32AMP INDUSTRIAL PLUG	
47	302041	(STAINLESS STEEL) FIXED CHASSIS & AXLE ASSEMBLY	
48	402202	BLACK PLASTIC COATED HANDLE	
49	206205	HOSE CLIP	
50	325144	GREY CONTAINER (2000)	
	325075	NATURAL CONTAINER (2000)	
51	214001	DIE CAST FLANGE	
52	202027	HOSE FLANGE GASKET	
53	219045	M5 X 16MM LONG POZI PAN SEMS SCREW	
54	303039	(STAINLESS STEEL) WATER DEFLECTOR	
55	206135	TOGGLE FASTENER	
56	219005	M5 FORM G WASHER	
57	219076	M5 NYLON INSERT NUT	
58	403015	BLACK DRUM BRACKET	
59	206228	DRAIN HOSE CONNECTOR	
60	219310	RUBBER WASHER	
61	206116	BLACK NUT	
62	206209	A.B.A HOSE CLIP	
63	225099	EMPTYING HOSE	
64	206111	HOSE CLOSURE	
65	219047	M5 X 10MM LONG POZI PAN SEMS SCREW	
66	219477	TAPPEX INSERT	
67	206028	TOGGLE	

WIRING DIAGRAM

DRG. No
WD-0255

PART. No
123234

14" WVD (DUPLIX) LAMB 230v

A03	220558 WAS 220142. 320287 WAS 220336. 320044 WAS 321090	MCF	IL	17:03:09
ISSUE	REVISION	DRAWN	APPD.	DATE

