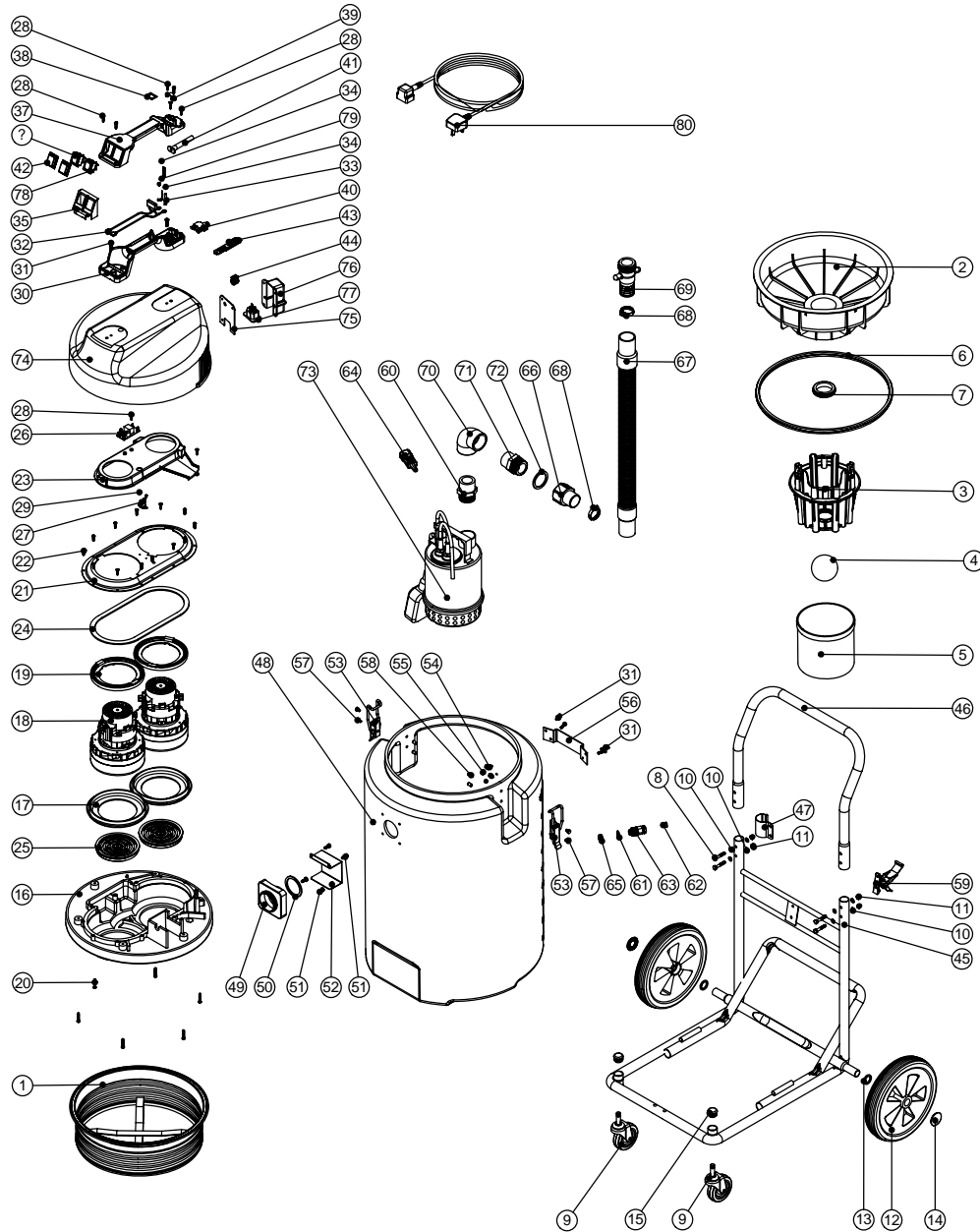


Numatic International Spare Parts

Model No: WVD2000AP-2 EXPLODED DRAWING

234349

DRAWING:EXP-0780 ISS:A03
27/06/2008



Numatic International Spare Parts

Model No: WVD2000AP-2 EXPLODED DRAWING

POS:	ITEM NO:	DESCRIPTION:	COMMENTS:
1	207030	WHITE FILTER ASSEMBLY	
2	225101	FLOAT MOULDING	
3	225130	MOULDED FLOAT CAGE	
4	208026	POLYPROP BALL	
5	207073	GAUZE FILTER	
6	202036	FLOAT MOULD EXTRUSION SEAL	
7	220235	FLOAT GROMMET	
8	219064	M6 X 35MM LONG HEX BOLT	
9	204060	3 INCH CASTOR	
10	219007	M6 FORM B WASHER	
11	219080	M6 DOMENUT	
12	204028	10 INCH WHEEL	
13	219505	NYLON WASHER	
14	219504	STARLOCK PUSH ON FASTENER	
15	20637V	25.4MM TUBE END STOP	
16	301048	PROCESSED BOTTOM MOTOR HOUSING	
17	202005	MOTOR BOTTOM GASKET	
18	205411	240V 2 STAGE D.I BYPASS ACUSTEK MOTOR (BL21104)(MARKED 230V)	
	205410	220V 2 STAGE D.I BYPASS ACUSTEK MOTOR (BL21102)(MARKED 230V)	
	205409	120V 2 STAGE D.I BYPASS ACUSTEK MOTOR (BL21101)	
19	227925	TOP MOTOR GASKE	
20	219369	No8 X 1 INCH LONG POZI PAN STAINLESS STEEL PLASTITE SCREW	
21	325534	TOP MOTOR HOUSING (DUPLX)	
22	219370	No8 X 5/8 INCH LONG PLASTITE STAINLESS STEEL SCREW	
23	227928	570 AIR SEPERATOR (LAMB BYPASS MOTOR DUPLEX)	
24	202012	GASKET	
25	206010	FAN GUARD	
26	220555	230V DELAY START MODULE	
27	220532	THERMOSTAT	
28	219107	No6 X 5/8 INCH LONG POZI PAN PLASTITE SCREW	
29	219491	M5 X 3MM LONG POZI PAN TAPTITE SCREW	
30	320835	HANDLE BASE MOULDING + INSERTS	
31	219546	M5 X 20MM LONG POZI PAN SEMS SCREW	
32	220142	SUPPRESSOR ASSEMBLY	
	230234	SUPPRESSOR ASSEMBLY	EURO VERSION
	220558	SUPPRESSOR ASSEMBLY	HARDWIRED VERSION
33	206562	CONTACT PIN	
34	219090	M4 X 8MM LONG POZI PAN SEMS SCREW	
35	227629	SWITCH MOUNTING BRACKET	
36	220843	BLUE ROCKER SWITCH	
37	227622	HANDLE COVER (10 AMP / 3 PIN / 2 SWITCH)	
	227626	HANDLE COVER HARD WIRED 2 SWITCH	HARDWIRED VERSION
38	202000	TERMINAL GASKET	
39	227564	PLUG LOCATION CLAMP	
40	227631	TERMINAL COVER & CLAMP (3 PIN)	
41	220823	STRESS RELIEF	
42	206573	SWITCH COVER (PLUG HANDLE)	
43	227636	STRAIN RELIEF	
44	227637	CABLE CLIP	
45	302041	(STAINLESS STEEL) FIXED CHASSIS & AXLE ASSEMBLY	
46	402202	BLACK PLASTIC COATED HANDLE	
47	206205	HOSE CLIP	
48	325145	GREY CONTAINER (2000P)	
49	214001	DIE CAST FLANGE	
50	202027	HOSE FLANGE GASKET	
51	219045	M5 X 16MM LONG POZI PAN SEMS SCREW	
52	303039	(STAINLESS STEEL) WATER DEFLECTOR	
53	206135	TOGGLE FASTENER	
54	219005	M5 FORM G WASHER	
55	219076	M5 NYLON INSERT NUT	
56	403015	BLACK DRUM BRACKET	
57	219047	M5 X 10MM LONG POZI PAN SEMS SCREW	
58	219477	TAPPEX INSERT	
59	206028	TOGGLE	
60	320897	1 1/4 INCH HEXAGON NIPPLE (MODIFIED)	
61	229115	16MM SEALING WASHER	
62	220061	CABLE BUSH	
63	220106	M16 CABLE GLAND	
64	220133	STRAIGHT 3 PIN PLUG	
65	229117	M16 LOCKNUT	
66	303070	1 1/4 INCH ADAPTOR MODIFIED	
67	213027	700MM X38MM TRANSLU HOSE + CUFFS	
68	206209	A.B.A HOSE CLIP	
69	219221	MALE FITTING	
70	206002	ELBOW PVC 1 1/4 INCH X 90 DEGREE	
71	304198	1 1/4 INCH HEXAGON NIPPLE	
72	219217	RUBBER SEAL WASHER	
73	225500	SUBMERSIBLE PUMP 230V/50HZ (EBARA MKII) (C/W FLOAT SWITCH / ONE METRE CABLE / NO PLUG)	
	225501	SUBMERSIBLE PUMP 110V/50HZ (EBARA MKII) (C/W FLOAT SWITCH / ONE METRE CABLE / NO PLUG)	
74	301092	PROCESSED HEAD TOP	
75	202082	SOCKET COVER GASKET	
76	206511	SOCKET COVER	
77	229118	POWER TAKE OFF SOCKET	
78	220582	GREEN ROCKER SWITCH	
79	208563	EARTH CONTACT PIN	
80	236010	10.0M X 1.00MM X 3 CORE NUCABLE (UK PLUG)	
	236063	10.0MT X 3CORE X 14AWG (YELLOW) SJTW 5-15P PLUG CSA	
	236124	10.0MT X 1MM X 3 CORE YELLOW CABLE (SOCKET + PLUG) EURO	
	220745	15.5MT X 3 X 1MM CABLE + ST CONTINENTAL PLUG (YELLOW)	

WIRING DIAGRAM

DRG. No
WD-0246
PART. No
123225

14" PLASTIC DUPLEX PTO BYPASS(LAMB) 240V

A02	320320 WAS 320003. 320322 WAS 320183. 220558 WAS 220142 320044 WAS 220336. 320287 WAS 220336	MCF	IL	17:03:09
ISSUE	REVISION	DRAWN	APPD.	DATE

