

DAILY MAINTENANCE CHART

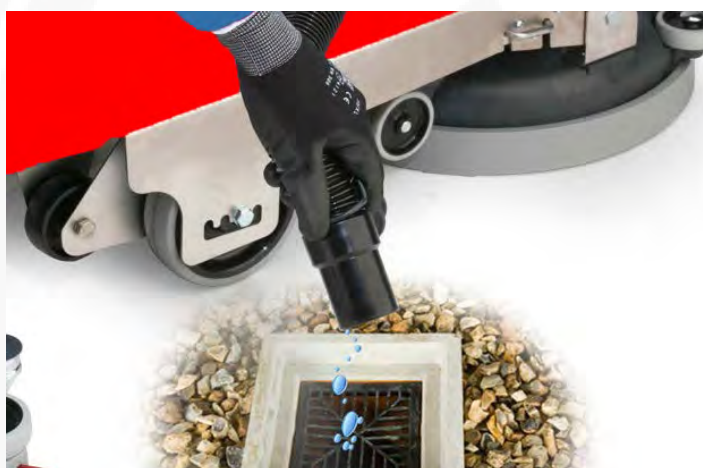
NET4045DMVNo1

NUMATIC TWINTEC CABLE ET4045

**AFTER EVERY USE, ENSURE
THAT YOU COMPLETE THE
FOLLOWING 6 STEPS**



1.



Empty the recovery tank and rinse thoroughly with clean water.

2.



Clean out the debris filter basket located under the seperator hood.

3.



Ensure the seperator is clean and undamaged. Replace seal if necessary.

4.



Clean suction pod filter located in the seperator hood behind the black flap.

5.



IMPORTANT: *Clean underside of squeegee from dirt and debris.*

6.



Store machine with seperator lifted from the tank to avoid condensation.



REPORT ALL DAMAGES AND TECHNICAL ISSUES TO THE SUPERVISOR

WEEKLY MAINTENANCE CHART

NET4045WMVNo1

NUMATIC TWINTEC CABLE ET4045

**AFTER EVERY WEEK, ENSURE
THAT YOU COMPLETE THE
FOLLOWING 4 STEPS**



1. Check all all hoses for damage, holes and obstructions. Clean and replace as necessary.



2. Thoroughly clean top seperator hood and seal.



3. **IMPORTANT:** Remove squeegee and check for wear and damage. Clean thoroughly.



4. Remove brushes/pad drives and check for wear and damage.



REPORT ALL DAMAGES AND TECHNICAL ISSUES TO THE SUPERVISOR