

Pioneer Eclipse®

A company of the AMANO Group



We help you shine.™

**PE420GP**

Grinder, Polisher & Burnisher.



# PE420GP

Grinder, Polisher and Burnisher.

Featuring an 18 HP 603 cc engine from: **Kawasaki Engines**

- 1 12-volt on-board battery starter.
- 2 7 gallon (26.5 liter) on board water supply.
- 3 Internal "above pad" water dosing system provides for even floor wetting and prevents wetting walls and merchandise.
- 4 Adjustable welded handle for improved comfort and control.
- 5 Eco-Sense™ emissions monitoring system.
- 6 American made all aluminum castings.
- 7 RokBak™ deck for easy disc installation.
- 8 Easy access filters for quick maintenance.
- 9 Ergonomic clutch and finger tip on/off water flow control..
- 10 Integral skirt protects surrounding merchandise.

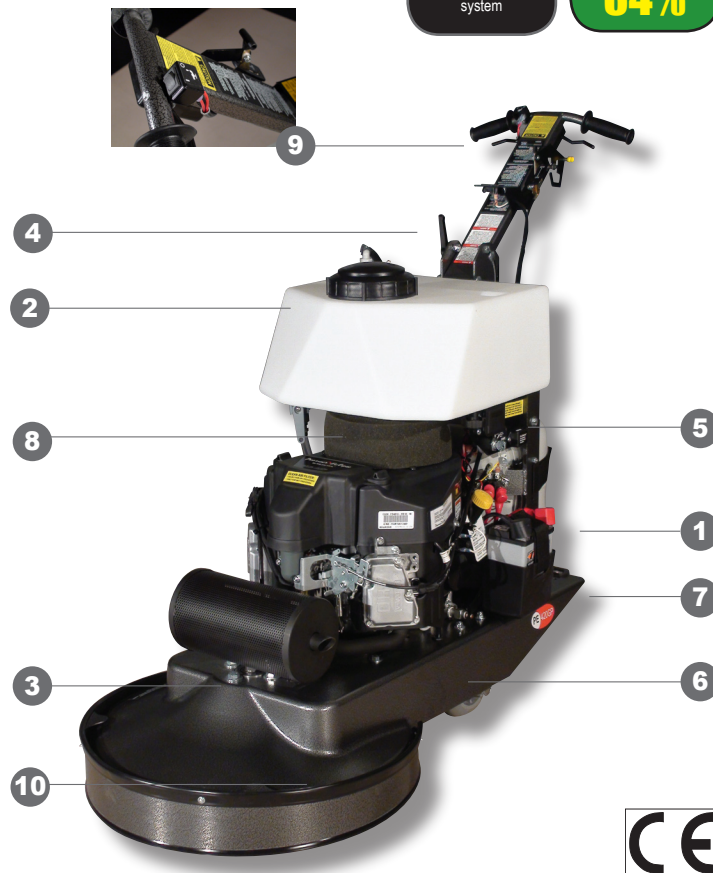
## The affordable solution

*Versatile applications.*

**For concrete, terrazzo and marble.**



The PE420GP features a three position throttle - *idle, polish, burnish* - that accurately adjusts the pad speed for optimal polishing (1000 rpm) or high speed burnishing (1500 rpm).



FEATURING  
**EcoSense™**  
emissions monitoring  
system

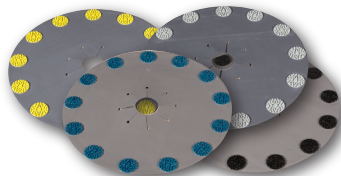
REDUCES  
OPERATING  
COSTS BY  
**34%**

shine on.

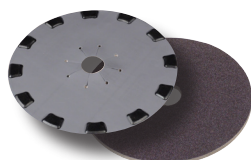
CGA listed, CARB/EPA certified, CE approved

### Dimensions and Performance Features

Performance	Driver Size	Width	Vibration	Pad Pressure	Noise Level	Pad Speed	Weight
Polishing: 11,000 ft <sup>2</sup> /hr. (1022 m <sup>2</sup> /hr.) Burnishing: 25,000 ft <sup>2</sup> /hr. (2322 m <sup>2</sup> /hr.)	21 in (53 cm)	22.75 in (58 cm)	< 2.5 m/s <sup>2</sup>	75 lb (34 kg)	89 dB (A)	Polishing: 1,000 rpm Burnishing: 1,500 rpm	240 lb (109 kg)



Level-S™ pads are available in resin or semi-metal bonds and in grits from 30 - 3000. The proprietary Flex-Hub™ driver adjusts the pad to the floor surface for maximum effect.



Level-S™ 100 vacuum brazed metal trapezoid pads are designed for coating removal from concrete surfaces.



PowerStar® 1100 Densifying treatment and Stain Resistant Top Shield protects and hardens concrete floor surfaces.



PowerPolish™ & PowerPolish HT™ pads are ideal for curing PowerStar® Top Shield coating on concrete surfaces.

Distributed By:

**proquip**  
New Zealand  
Equipment for professionals

Proquip NZ Ltd  
t: +64 4 566 7847  
f: +64 4 576 0430  
sales@proquipnz.co.nz  
P O Box 39 133, Wgtn Mail Centre 5045  
47 Fitzherbert Street, Petone, New Zealand

**Pioneer Eclipse®**

©2011 Amano Pioneer Eclipse Corporation® • 1 Eclipse Road • PO Box 909 • Sparta, NC 28675 USA •  
1-800-367-3550 • 1-336-372-8080 • Fax: 1-336-372-2895 • www.pioneer-eclipse.com