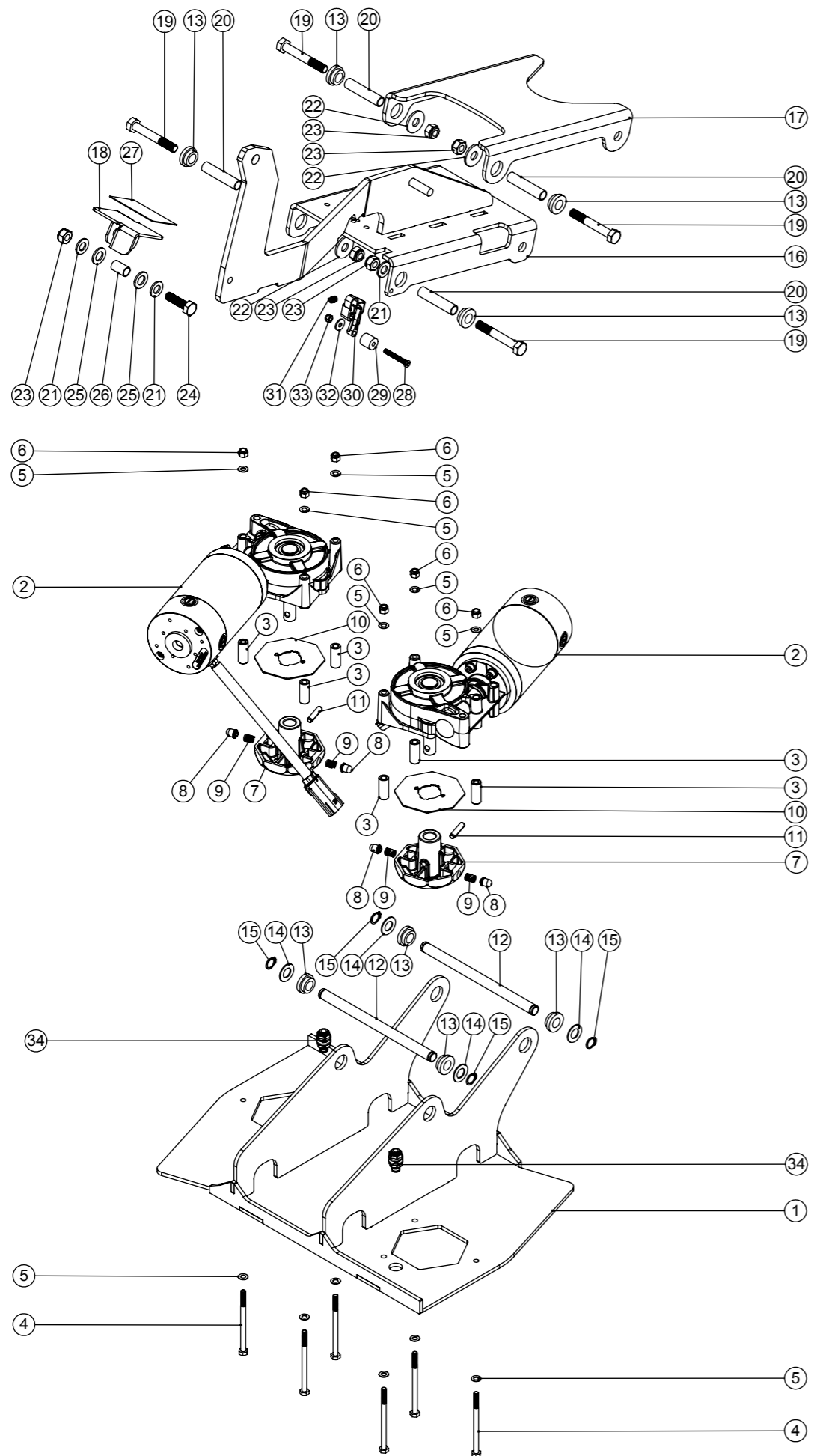


# Numatic International Spare Parts

**Model No:** TRO650 BRUSH DECK / LIFTING LINK / CHUCK ASSEMBLY

244377  
DRAWING: DRW-15481 ISS:A01  
01/04/2014

NB: FOR WIRING SEE DRAWING: DRW-13416, DRW-14741



# Numatic International Spare Parts

**Model No:** TRO650 BRUSH DECK / LIFTING LINK / CHUCK ASSEMBLY

ITEM:	PART No:	DESCRIPTION	COMMENTS:
1	404183	TRO DECK WELD ASSEMBLY PAINT SILVER GREY	
2	205263	24V DC BRUSH DRIVE PM90 MOTOR/GEARBOX ASSEMBLY (14:1 RATIO) C/W WATERPROOF CONNECTOR	
3	206851	MOTOR MOUNTING SPACER	
4	219534	M6 X 90MM LONG HEX BOLT	
5	219007	M6 FORM B WASHER	
6	219088	M6 NYLON INSERT NUT	
7	206966	CHUCK CASTING	
8	208135	CHUCK DOME	
9	206957	DRIVE SYSTEM SPRING	
10	392331	OCTO CHUCK PLASTIC COVER	
11	291079	6MM X 30MM STAINLESS STEEL ROLL PIN	
12	206980	PIVOT TUBE	
13	208058	SHOULDERED BUSH - Ø12.9MM I/D	
14	219302	M12 FORM B STAINLESS STEEL WASHER	
15	219151	13MM EXTERNAL CIRCLIP	
16	404044	BRUSH DECK PEDAL ARM WELDED ASSEMBLY - PAINTED SILVER GREY	
17	404045	BRUSH DECK REAR LINK - PAINTED SILVER GREY	
18	329807	FOOT PEDAL HINGE BRACKET	
19	219570	M10 X 70MM LONG HEX BOLT	
20	391194	PIVOT TUBE A	
21	219012	M10 FORM E WASHER	
22	219948	M10 PENNY WASHER	
23	219649	M10 NYLON INSERT NUT	
24	219341	M10 X 35MM LONG HEX BOLT	
25	219911	PLASTIC WASHER	
26	303811	12.7MM DIAMETER X 18G X 20MM LONG STAINLESS STEEL TUBE	
27	391221	FOOT PEDAL GRIP PAD	
28	219376	M5 X 40MM LONG POZI-COUNTERSUNK SCREW	
29	219587	15.39MM O/D X 5.16MM I/D X 15.88MM LONG NYLON SPACER	
30	227587	CENTRE SWITCH OPERATING LEVER MOULDING	
31	219804	SWITCH COMPRESSION SPRING	
32	219005	M5 FORM G WASHER	
33	219076	M5 NYLON INSERT NUT	
34	208032	6MM BULKHEAD CONNECTOR	



**WARNING**  
Seek guidance from Numatic team before use.  
Technical information supplied as guidance for use by suitably qualified personnel only.  
Numatic International Limited accepts no liability for misuse or negligence.

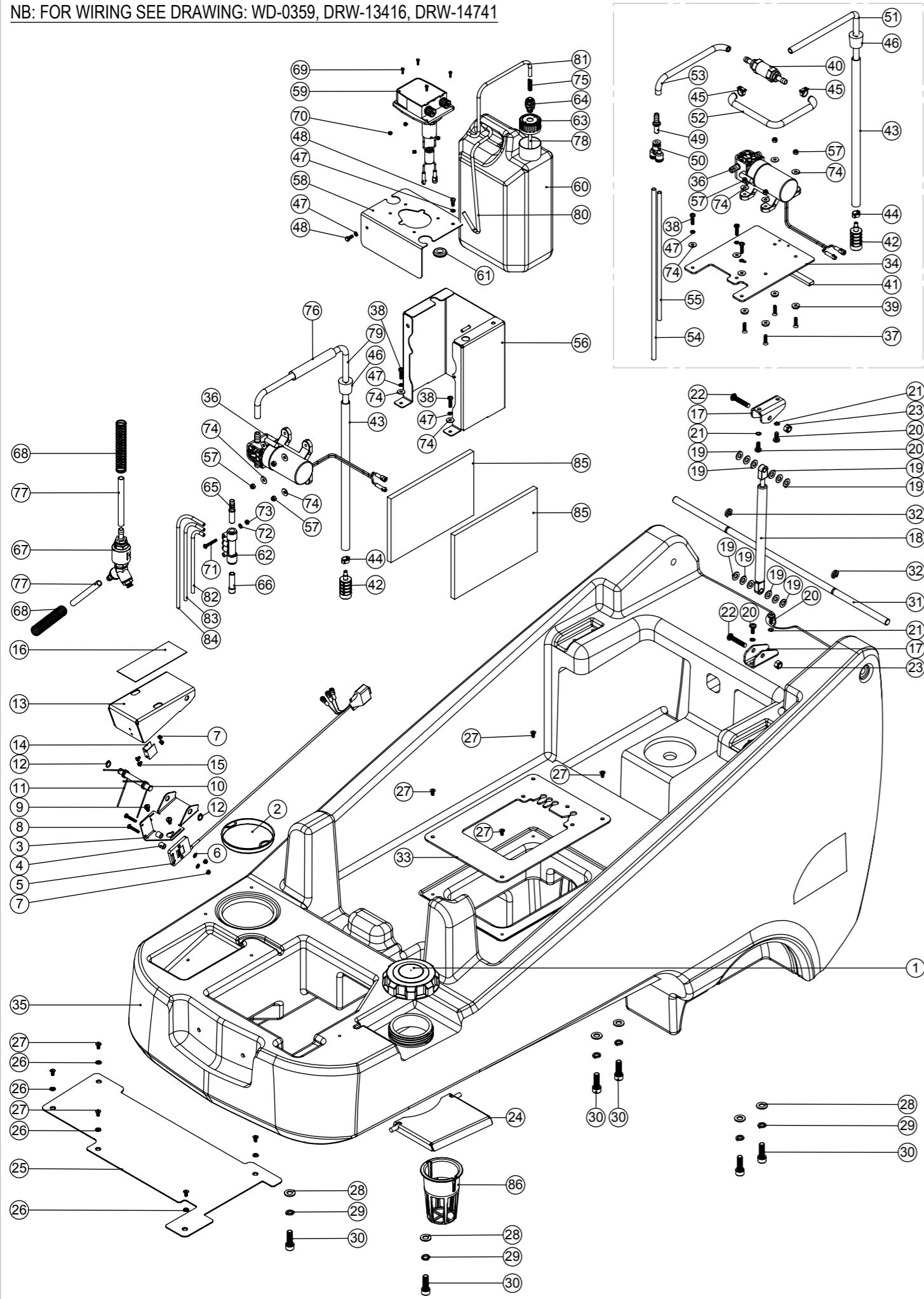


# Numatic International Spare Parts

## Model No: TTV678 & TRO650 Bottom Tank / Pump / Pedal Assembly

NB: FOR WIRING SEE DRAWING: WD-0359, DRW-13416, DRW-14741

234610  
DRAWING: EXP-1038 ISS:A04  
02/09/2011



**WARNING**  
 Seek guidance from Numatic team before use.  
 Technical information supplied as guidance for use by suitably qualified personnel only.  
 Numatic International Limited accepts no liability for misuse or negligence.

# Numatic International Spare Parts

## Model No: TTV678 & TRO650 Bottom Tank / Pump / Pedal Assembly

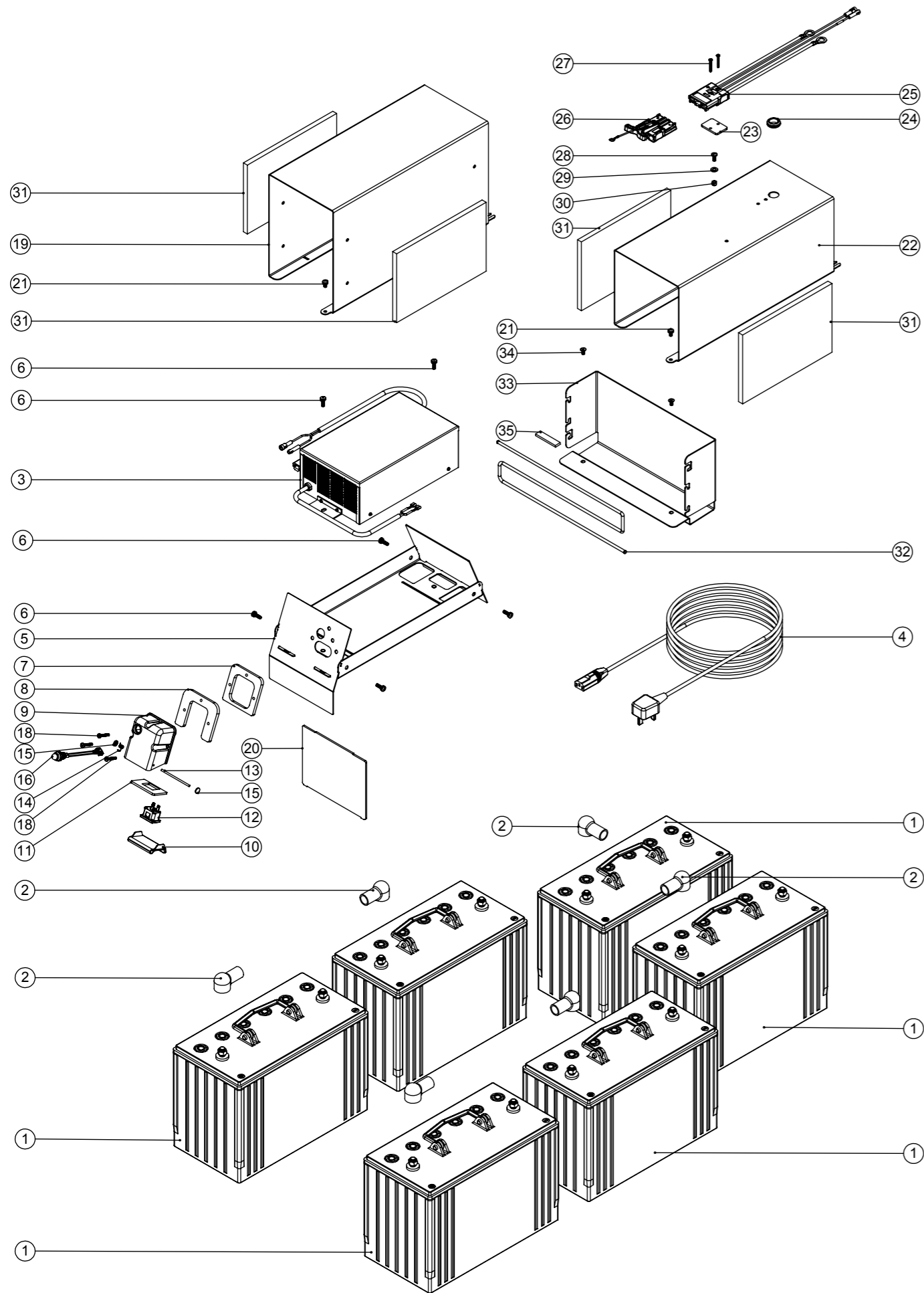
ITEM:	PART No:	DESCRIPTION	COMMENTS:
1	208077	FILLER CAP	
2	219452	100MM DIAMETER HOLE PLUG	
3	329841	ACCELERATOR HINGE PLATE	
4	219574	NYLON SPACER	
5	206905	ACCELERATOR SENSOR	
6	219206	M4 FORM A WASHER	
7	219083	M4 NYLON INSERT NUT	
8	219267	M4 X 25MM LONG POZI PAN SCREW	
9	219047	M5 X 10MM LONG POZI PAN SEMS SCREW	
10	208046	CIRCLIP BAR	
11	208047	TORSION SPRING (LEFT HAND)	
12	219586	10MM EXTERNAL CIRCLIP	
13	329840	ACCELERATOR PEDAL	
14	404051	GILL SENSOR ACTIVATOR PLATE (PAINTED ANTHRACITE GREY)	
15	219697	M4 X 8MM LONG POZI PAN STAINLESS STEEL SCREW	
16	391222	ACCELERATOR GRIP PAD	
17	329893	GAS STRUT BRACKET	
18	208042	GAS STRUT	
19	219010	WASHER.M8.FORM A.Z/PL	
20	219618	M6 X 16MM LONG POZI PAN SCREW	
21	219544	M6 SHAKEPROOF WASHER	
22	219865	M8 X 40MM LONG SOCKET BOLT	
23	219078	M8 NYLON INSERT NUT	
24	303822	FILLER CAP COVER WELDED ASSEMBLY	
25	329839	FLOOR PLATE	TTV678 & TRO650 ON-BOARD CHARGER TTV678 & TRO650 CHARGERLESS
26	392269	TTV678 FLOOR PLATE	
27	219972	M5 COUNTERSUNK EXTERNAL SHAKEPROOF WASHER	
28	291008	M5 X 10MM LONG POZI PAN COUNTERSUNK STAINLESS STEEL SCREW	
29	219012	M10 FORM E WASHER	
30	219349	M10 SINGLE COIL WASHER	
31	219966	M10 X 30 FULLY THREADED SOCKET	
32	208071	TOP TANK PIVOT TUBE	
33	208072	PLASTIC FIXING RING	
34	-	-	
35	-	TRO WATER PUMP PLATE	
36	237536	TRO-650 BOTTOM TANK MOULDING	
37	237564	TRO650 BOTTOM TANK MOULDING (EP)	WITHOUT LOGO
38	323118	WATER PUMP & LEAD ASSEMBLY	
39	219331	M5 X 20MM LONG POZI PAN COUNTERSUNK SCREW	TRO650
40	219571	M5 X 20MM LONG POZI PAN STAINLESS STEEL SCREW	TRO650
41	219573	SCREW INSULATOR	TRO650
42	304484	NON RETURN VALVE ASSEMBLY	TRO650
43	212267	12MM WIDE 6MM THICK INSEAL (150mm)	TRO650
44	208360	WEIGHTED FILTER	
45	208793	TRO CLEAN WATER PIPE SLEEVE	
46	219149	O CLIP 9-11MM	
47	208840	NYLON HOSE CLAMP 12.0MM-13.8MM	
48	304491	PROCESSED 23MM-27MM CONICAL STOPPER	
49	291084	WASHER.M5.SHAKEPROOF.STAINLESS STEEL	TRO650
50	219498	M5 X 12MM LONG STAINLESS STEEL HEX SCREW	
51	206796	BARBED CONNECTOR	TRO650
52	208851	8MM X 8MM EQUAL Y PIECE	TRO650
53	391497	CLEAR PVC HOSE CUT TO LENGTH (665mm)	TRO650
54	391494	SILICON TUBE 8MM I/D X 3.2MM WALL SECTION (CUT 370MM)	TRO650
55	391498	SILICON TUBE 8MM I/D X 3.2MM WALL SECTION (CUT 250MM)	TRO650
56	391504	800MM LONG X 6MM I/D X 8MM O/D FLEXIBLE NYLON TUBE	TRO650
57	391503	600MM LONG X 6MM I/D X 8MM O/D FLEXIBLE NYLON TUBE	TRO650
58	304508	NUTSERTED TTV678 PUMP HOUSING WELD STUDS ASSEMBLY PAINTED SILVER GREY	TTV678
59	291035	M5 NYLON INSERT NUT (STAINLESS STEEL)	
60	-	-	TTV678
61	321663	DETERGENT PUMP & SOLDERED LEAD ASSEMBLY	TTV678
62	208320	5 LITRE PLASTIC CONTAINER	TTV678
63	219735	GROMMET	TTV678
64	208031	3 WAY MANIFOLD (10MM DIAMETER INPUT / 6MM DIAMETER OUTPUT)	TTV678
65	303827	PROCESSED BLUE CAP	TTV678
66	208032	6MM BULKHEAD CONNECTOR	TTV678
67	208035	10MM X 8MM BARBED CONNECTOR	TTV678
68	208034	10MM BLANKING PLUG	TTV678
69	208118	NON RETURN VALVE ASSEMBLY	TTV678
70	219333	COMPRESSION SPRING	TTV678
71	219236	M3 X 10MM LONG SLOT SCREW	TTV678
72	219070	M3 NYLON INSERT NUT	TTV678
73	219913	M4 X 30MM LONG POZI PAN STAINLESS STEEL SCREW	TTV678
74	219688	M4 FORM A STAINLESS STEEL WASHER	TTV678
75	219687	M4 STAINLESS STEEL NYLON INSERT NUT	TTV678
76	219644	M5 FORM G STAINLESS STEEL WASHER	TTV678
77	208880	25MM COMPRESSION SPRING	TTV678
78	208094	PB10MM X 110MM LONG / SEALED ENDS / BLACK POLYESTER BRAIDING	TTV678
79	391513	SILICON TUBE 8MM I/D X 3.2MM WALL SECTION (CUT 110MM)	TTV678
80	391358	315MM LONG X 4MM I/D X 6MM O/D FLEXIBLE NYLON TUBE	TTV678
81	391514	CLEAR PVC HOSE CUT TO LENGTH (1200mm)	TTV678
82	391516	330MM LONG X 4MM I/D X 6MM O/D FLEXIBLE NYLON TUBE	TTV678
83	391517	610MM LONG X 4MM I/D X 6MM O/D FLEXIBLE NYLON TUBE	TTV678
84	391518	720MM LONG X 4MM I/D X 6MM O/D FLEXIBLE NYLON TUBE	TTV678
85	391519	840MM LONG X 4MM I/D X 6MM O/D FLEXIBLE NYLON TUBE	TTV678
86	208645	FOAM BATTERY SPACER	TTV678
87	208790	BOTTOM TANK FILLING FILTER	

# Numatic International Spare Parts

## Model No: TTV678 & TRO650 Charger/Charger Spacer/Batteries Assembly

NB: FOR WIRING SEE DRAWING: WD-0359, DRW-15631, DRW-13416, DRW-14741

234611  
DRAWING: EXP-1039 ISS:A07  
26/03/2014



# Numatic International Spare Parts

## Model No: TTV678 & TRO650 Charger/Charger Spacer/Batteries Assembly

ITEM:	PART No:	DESCRIPTION	COMMENTS:
1	205112	100 AMP/HOUR REPLACEMENT BATTERY (C/W PACKGING FOR 230138 BATTERY)	
2	206861	RED PVC TERMINAL CAP	
3	230189	220-240V MENTZER 30 AMP CHARGER (NO LIGHTS VERSION)	
	230187	110-120V MENTZER 30 AMP CHARGER (NO LIGHTS VERSION)	
4	220386	UK TYPE CHARGING LEAD	
	221079	EURO TYPE CHARGING LEAD	
	220389	USA TYPE CHARGING LEAD	
5	404190	NUTSERTED TOP CHARGER TRAY WELD ASSEMBLY PAINTED SILVER GREY	
6	219045	M5 X 16MM LONG POZI PAN SEMS SCREW	
7	329595	TOP SOCKET PLATE	
8	392354	IEC CONNECTOR BOX SPACER PLATE	
9	329355	PROCESSED SOCKET COVER MOULDING WITH LARGE HOLE	STANDARD MACHINE
	303629	SOCKET COVER MOULDING C/W LARGE MOULDED HOLE (WITH PROCESSED HOLES)	FLAME RETARDENT CSA SPEC
10	227781	FLAP MOULDING	
11	329297	SOCKET MOUNTING PLATE	
12	220391	3 PIN APPLIANCE SOCKET	
13	390979	72MM LONG X 3MM DIAMETER STAINLESS STEEL BAR	
14	219819	TORSION SPRING	
15	219832	3MM DIAMETER STARLOCK	
16	270193	NEON INDICATOR RED LENS 230V C/W LINK WIRES	
	270195	NEON INDICATOR RED LENS 120V C/W LINK WIRES	
17	219472	M4 X 16MM LONG POZI PAN SEMS SCREW	
18	219267	M4 X 25MM LONG POZI PAN SCREW	
19	404186	CHARGER BOX	
20	392346	CHARGER DEFLECTOR PLATE	
21	219047	M5 X 10MM LONG POZI PAN SEMS SCREW	
22	304497	NUTSERTED CHARGER SPACER BOX PAINTED SILVER GREY	CHARGERLESS MACHINES
23	392370	3MM BLACK SBS CONNECTOR SPACER	CHARGERLESS MACHINES
24	219631	19MM GROMMET	CHARGERLESS MACHINES
25	323178	LOOM ASSEMBLY - 4 CIRCUIT - CHARGER/INHITIBT LEAD	CHARGERLESS MACHINES
26	323177	LOOM ASSEMBLY - 1 CIRCUIT - CHARGER/INHITIBT LEAD	CHARGERLESS MACHINES
27	219519	M3 X 25MM LONG POZI PAN SCREW	CHARGERLESS MACHINES
28	219049	M5 X 12MM LONG POZI PAN SCREW	CHARGERLESS MACHINES
29	219493	M6 NYLON WASHER	CHARGERLESS MACHINES
30	291035	M5 NYLON INSERT NUT (STAINLESS STEEL)	CHARGERLESS MACHINES
31	208645	FOAM BATTERY SPACER	
32	208598	TTV678 POCKET BUNGEE CORD	CHARGERLESS MACHINES
33	304454	TTV678 POCKET PAINTED GREY - NUTSERTED	CHARGERLESS MACHINES
34	291008	M5 X 10MM LONG POZI PAN COUNTERSUNK STAINLESS STEEL SCREW	CHARGERLESS MACHINES
35	212262	50mm LONG -12MM X 4MM X 1500MM V6 OPEN CELL NATURAL SPONGE	



**WARNING**  
Seek guidance from Numatic team before use.  
Technical information supplied as guidance for use by suitably qualified personnel only.  
Numatic International Limited accepts no liability for misuse or negligence.



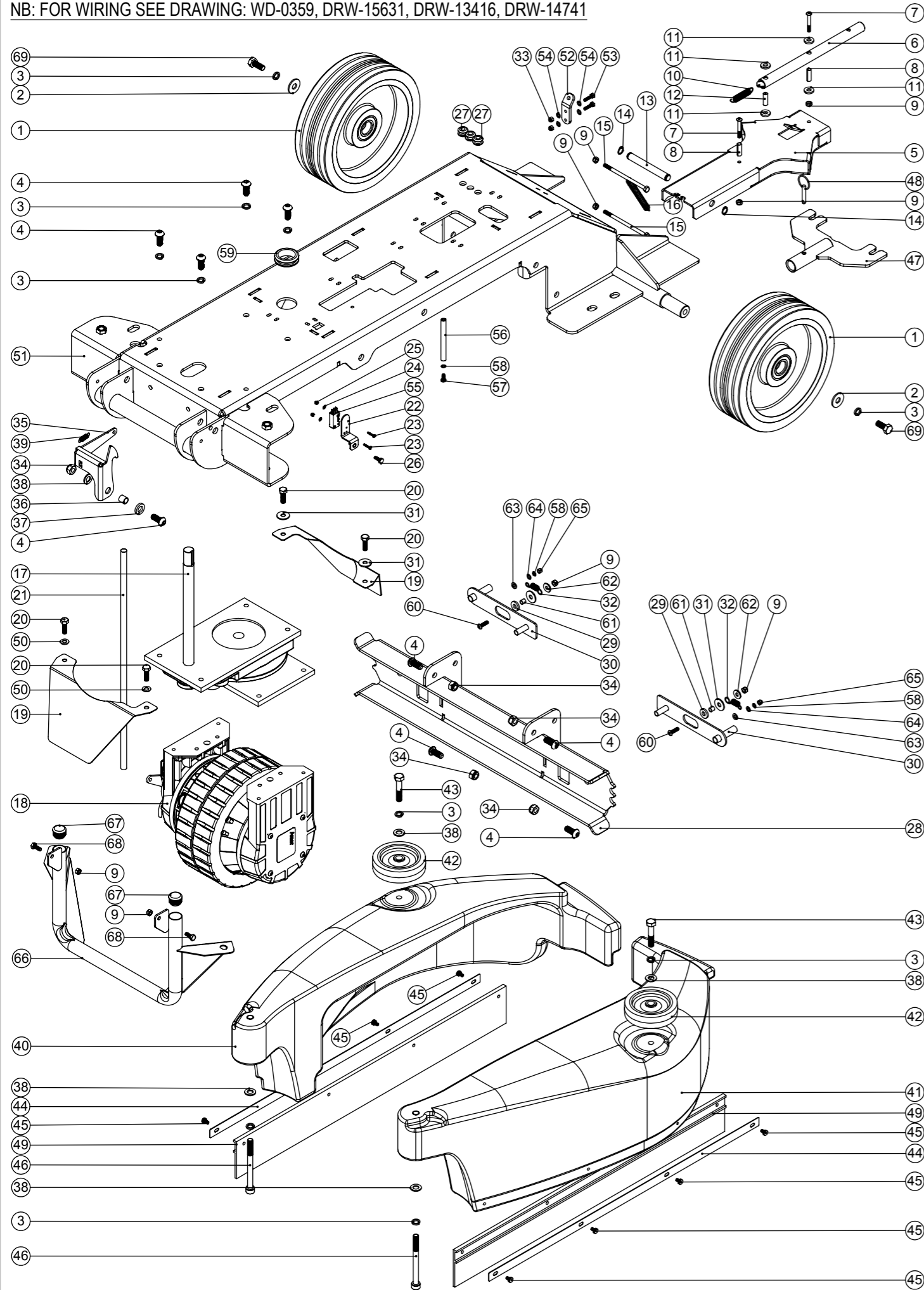


# Numatic International Spare Parts

## Model No: TTV678 & TRO650 Chassis / Drive Motor Assembly

NB: FOR WIRING SEE DRAWING: WD-0359, DRW-15631, DRW-13416, DRW-14741

234606  
DRAWING: EXP-1034 ISS:A02  
30/09/2009



**WARNING**  
 Seek guidance from Numatic team before use.  
 Technical information supplied as guidance for use by suitably qualified personnel only.  
 Numatic International Limited accepts no liability for misuse or negligence.



# Numatic International Spare Parts

## Model No: TTV678 & TRO650 Chassis / Drive Motor Assembly

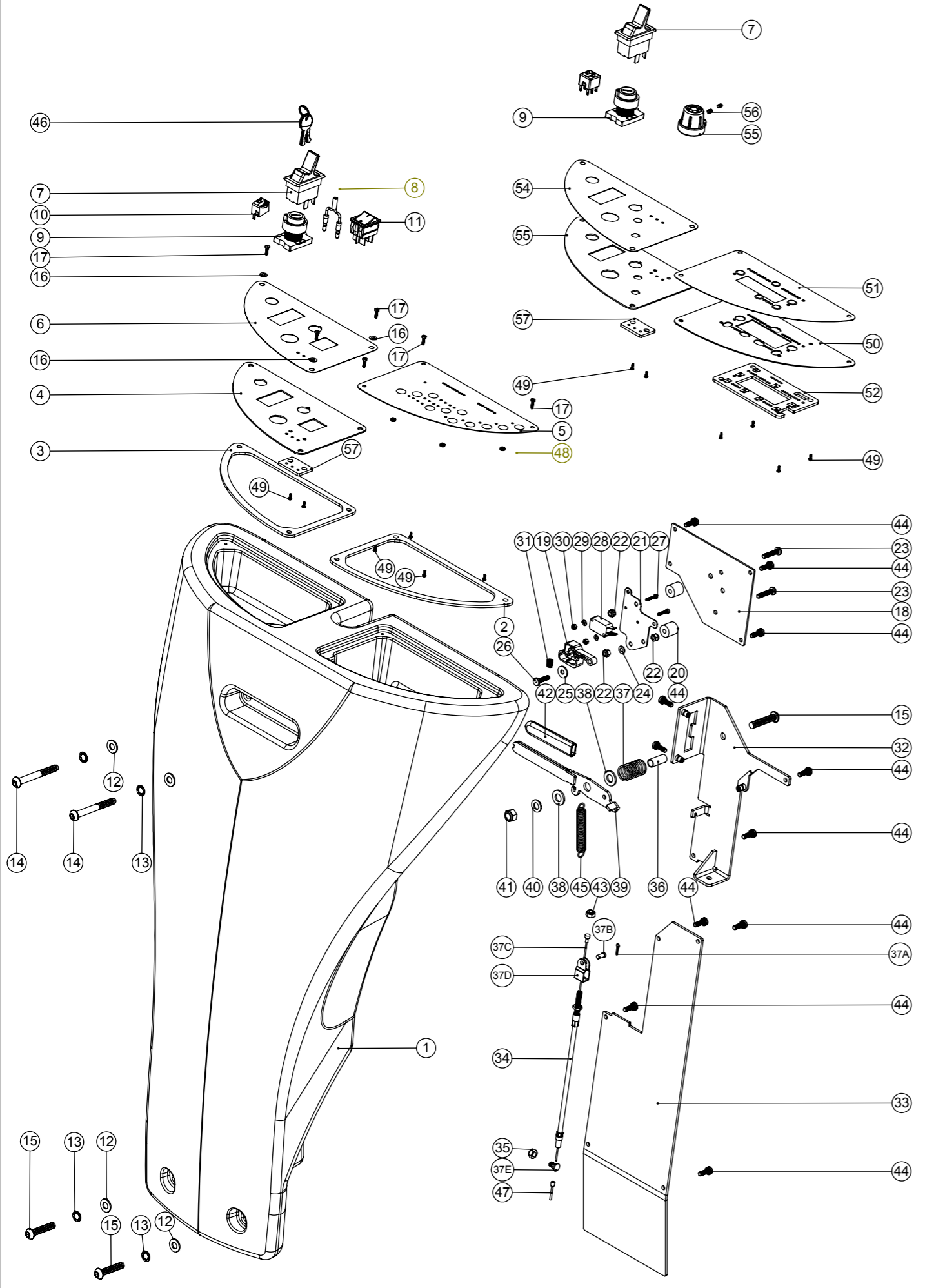
ITEM:	PART No:	DESCRIPTION	COMMENTS:
1	206939	254MM DIAMETER WHEEL	
2	219948	M10 PENNY WASHER	
3	219349	M10 SINGLE COIL WASHER	
4	219910	M10 X 25MM LONG SOCKET BUTTON HEAD STAINLESS STEEL SCREW	
5	303797	TOP/BOTTOM LIFTING PLATE WELDED ASSEMBLY	
6	303799	PIVOT TUBE WELDED ASSEMBLY	
7	219807	M6 X 40MM LONG SOCKET BUTTON HEAD BOLT	
8	206954	SPIRO SPACER	
9	219642	M6 STAINLESS STEEL NYLON INSERT NUT	
10	206955	RETURN SPRING	
11	206964	SLIDE NYLON SPACER	
12	206963	VERTICAL NYLON SPACER	
13	206965	PIVOT AXLE	
14	219345	12MM EXTERNAL CIRCLIP	
15	219945	M6 X 110MM LONG HEXAGONAL HEAD BOLT ZINC PLATED	
16	20695V	SPRING	
17	206928	STEERING SYSTEM	
18	321450	MOTOR WHEEL & MODIFIED BRAKE LEAD ASSEMBLY	
19	329852	SPLASH GAURD	
20	219092	M8 X 25MM LONG HEX BOLT	
21	208091	PB15MM X 500MM LONG / SEALED ENDS / BLACK POLYESTER BRAIDING	
22	303841	NUTSERTED BRUSH DECK MICROSWITCH BRACKET	
23	219038	M3 X 16MM LONG SLOT SCREW	
24	219237	M3 FORM A WASHER	
25	219070	M3 NYLON INSERT NUT	
26	219045	M5 X 16MM LONG POZI PAN SEMS SCREW	
27	229025	STANDARD GROMMET	
28	303808	SIDE POD SLIDE PLATE WELDED ASSEMBLY	TTV678
	304457	TRO SIDE POD SLIDE PLATE ASSEMBLY	TRO650
29	219959	M8 PLASTIC WASHER	
30	303813	SIDE POD ADJUSTER BRACKET WELDED ASSEMBLY	TTV678
	304458	TRO RH SIDE POD ADJUSTER BRACKET WELD ASSEMBLY	TRO650
	304459	TRO LH SIDE POD ADJUSTER BRACKET WELD ASSEMBLY	TRO650
31	219716	M8 FORM G STAINLESS STEEL WASHER	
32	208079	EXTENSION SPRING	
33	219076	M5 NYLON INSERT NUT	
34	219649	M10 NYLON INSERT NUT	
35	329849	BRUSH DECK FOOT PEDAL LATCH	
36	303810	12.7MM DIAMETER X 18G X 12.5MM LONG STAINLESS STEEL TUBE	
37	229346	SPACER	
38	219012	M10 FORM E WASHER	
39	208019	BRUSH PEDAL LATCH SPRING	
40	229834	RIGHT HAND SIDE POD MOULDING	
41	229835	LEFT HAND SIDE POD MOULDING	
42	329187	100MM WHEEL (MODIFIED)	
43	219968	M10 X 50MM LONG HEX HEAD BOLT Z/PL	
44	329843	SPLASH SKIRT FIXING STRIP	
45	219047	M5 X 10MM LONG POZI PAN SEMS SCREW	
46	219967	M10 X 110MM LONG SOCKET CAP SCREW	
47	303795	QUICK RELEASE TUBE/PLATE WELDED ASSEMBLY	
48	206953	DETENT PINS	
49	206947	SPLASH SKIRT	
50	219578	M8 FORM A STAINLESS STEEL WASHER	
51	303784	CHASSIS WELDED ASSEMBLY	
52	329820	REAR CABLE PLATE	
53	291029	M5.20MM LG.HEX.SCREW S/S	
54	219355	M5 FORM A STAINLESS STEEL WASHER	
55	208748	IP RATED MICROSWITCH	
56	-		
57	219049	M5 X 12MM LONG POZI PAN SCREW	
58	219016	M5 SHAKEPROOF WASHER	
59	208144	38MM GROMMET X 6MM PANEL THICKNESS	
60	291010	M6 X 20MM LONG SOCKET BUTTON HEAD M/S Z/PL BOLT	
61	208475	8MM SPACER	
62	219647	M6 FORM G STAINLESS STEEL WASHER	
63	21927V	M6 FORM A WASHER	
64	219003	M5 FORM A STEEL WASHER	
65	219093	M5 DOMENUT	
66	404161	VARIO BUMPER WELD ASSEMBLY PAINT ANTHRACITE GREY	
67	20637V	25.4MM TUBE END STOP	
68	219719	M6 X 16MM LONG HEXAGONAL STAINLESS STEEL HEAD BOLT	
69	219909	M10 X 25MM LONG HEXAGONAL STAINLESS STEEL SCREW	

# Numatic International Spare Parts

## Model No: TTV678 & TRO650 Front Moulding/Lever/Panel Assembly

NB: FOR WIRING SEE DRAWING: WD-0359, DRW-15631, DRW-13416, DRW-14741

234609  
DRAWING: EXP-1037 ISS:A07  
26/03/2014



# Numatic International Spare Parts

## Model No: TTV678 & TRO650 Front Moulding/Lever/Panel Assembly

ITEM:	PART No:	DESCRIPTION	COMMENTS:
1	229858	TTV STEERING COLUMN MOULDING	
2	208096	PCB GASKET	
3	208097	KEY PANEL GASKET	
	310062	PCB REPLACEMENT KIT (MK3) INCLUDES ITEMS: 5, 50, 51, 52,53,54	TTV678 BUILT AFTER 12/01/09
	310043	PCB REPLACEMENT KIT (MK2)	TTV678 BUILT AFTER 12/01/09
	310042	PCB REPLACEMENT KIT (MK1)	TTV678 BUILT BEFORE 12/01/09
4	304509	TTV678 KEY & EMERGENCY STOP PANEL BACK PLATE PAINTED GREY C/W SELF-CLINCH NUTS	TTV678 ON-BOARD CHARGER
	429116	KEY & E STOP PANEL (PAINTED SILVER GREY)	TTV678 CHARGERLESS; TTV678 BUILT BEFORE 12/01/09 ISSUE A07
5	208048	RIDE ON DISPLAY PANEL MEMBRANE (PEDAL VERSION)	TTV678
6	208833	KEY & E-STOP OVERLAY (CHARGER LEDS)	TTV678 ON-BOARD CHARGER
	208128	KEY & E STOP OVERLAY STICKER	TTV678 CHARGERLESS
7	206933	PADDLE SWITCH	
8	321449	HORN SWITCH & SOLDERED LEAD ASSEMBLY	TTV678
9	208138	KEY SWITCH (2 POSITION)	
10	208095	SWITCH BLOCK (SINGLE POLE / 2 POSITION) (A0151B)	TTV678
11	220843	BLUE ROCKER SWITCH	TTV678
12	219010	M8 FORM A WASHER	
13	219018	M8 SHAKEPROOF WASHER	
14	219806	M8 X 70MM LONG SOCKET BUTTON HEAD BOLT	
15	219865	M8 X 40MM LONG SOCKET BOLT	
16	219688	M4 FORM A STAINLESS STEEL WASHER	
17	219236	M3 X 10MM LONG SLOT SCREW	
18	404050	LEVER SWITCH PLATE PAINTED BLACK	
19	227587	CENTRE SWITCH OPERATING LEVER MOULDING	
20	219587	15.39MM O/D X 5.16MM I/D X 15.88MM LONG NYLON SPACER	
21	329831	LEVER SWITCH PLATE 2	
22	219076	M5 NYLON INSERT NUT	
23	219575	M5 X 25MM LONG POZI PAN STAINLESS STEEL SCREW	
24	219003	M5 FORM A STEEL WASHER	
25	219005	M5 FORM G WASHER	
26	219054	M5 X 20MM LONG POZI PAN SCREW	
27	219500	M3 X 16MM LONG STAINLESS STEEL SLOT SCREW	
28	229483	SNAP ACTION SWITCH	
29	219237	M3 FORM A WASHER	
30	219070	M3 NYLON INSERT NUT	
31	219804	SWITCH COMPRESSION SPRING	
32	303790	LEVER PIVOT/SELECTOR PLATE WELDED ASSEMBLY	
33	329912	STEERING COLUMN COVER	
34	206959	LIFTING CABLE ASSEMBLY	INCLUDES ITEMS: 37A,37B,37C,37D,37E
37A	208155	COTTER PIN	
37B	208158	CABLE U BRACKET PIN	
37C	208154	INNER CABLE	
37D	208157	CABLE U BRACKET	
37E	208156	CABLE NIPPLE	
35	219853	M6 NYLOC HALF NUT (STAINLESS STEEL)	
36	391191	LEVER PIVOT SPACER (S/S 10MM O/D 8MM I/D X 24MM LONG)	
37	219592	COMPRESSION SPRING	
38	219449	M10 FORM A WASHER	
39	303789	LEVER PLATE WELD ASSEMBLY	
40	219578	M8 FORM A STAINLESS STEEL WASHER	
41	219078	M8 NYLON INSERT NUT	
42	206991	LEVER HANDLE MOULDING	
43	219642	M6 STAINLESS STEEL NYLON INSERT NUT	
44	219045	M5 X 16MM LONG POZI PAN SEMS SCREW	
45	226093	EXTENSION SPRING	
46	208167	SPARE SET OF KEYS (2 KEYS)	
47	208451	RED INSULATED BOOTLACE FERRULE -18MM PIN	1 PER REQUIRED WHEN ORDERING ITEM 37
48	304274	METAL PCB SUPPORT PLATE PAINTED GREY C/W SELF CLINCH NUTS	TTV678
49	219978	M2 X 6MM LONG POZI PAN SCREW	
50	304478	TRO CONTROL PANEL BACK PLATE PAINTED GREY C/W CLINCH NUTS	TRO650
51	208795	TRO DISPLAY PANEL MEMBRANE	TRO650
52	392044	DISPLAY PCB PLASTIC SPACER PLATE	TRO650
55	304489	TRO KEY & EMERGENCY STOP PANEL BACK PLATE PAINTED GREY C/W SELF-CLINCH NUTS	TRO650 ON-BOARD CHARGER
	404188	KEY & EMERGENCY STOP PANEL BACK PLATE PAINTED SILVER GREY	TRO650 CHARGERLESS
54	208794	TRO KEY & EMERGENCY STOP OVERLAY	TRO650 ON-BOARD CHARGER
	208814	TRO KEY & EMERGENCY STOP OVERLAY NON CHARGER VERSION	TRO650 CHARGERLESS
55	329363	SPEED ADJUSTMENT KNOB C/W INSERT	TRO650
56	219744	M4 X 6MM LONG BLACKODISED GRUB SCREW	TRO650
57	392360	TRO CHARGER PCB SPACER	TTV678/TRO650 ON-BOARD CHARGER
58	208458	SWITCH BLOCK (DOUBLE POLE / 2 POSITION) (A0152B)	



### WARNING

Seek guidance from Numatic team before use.  
Technical information supplied as guidance for use by suitably qualified personnel only.  
Numatic International Limited accepts no liability for misuse or negligence.

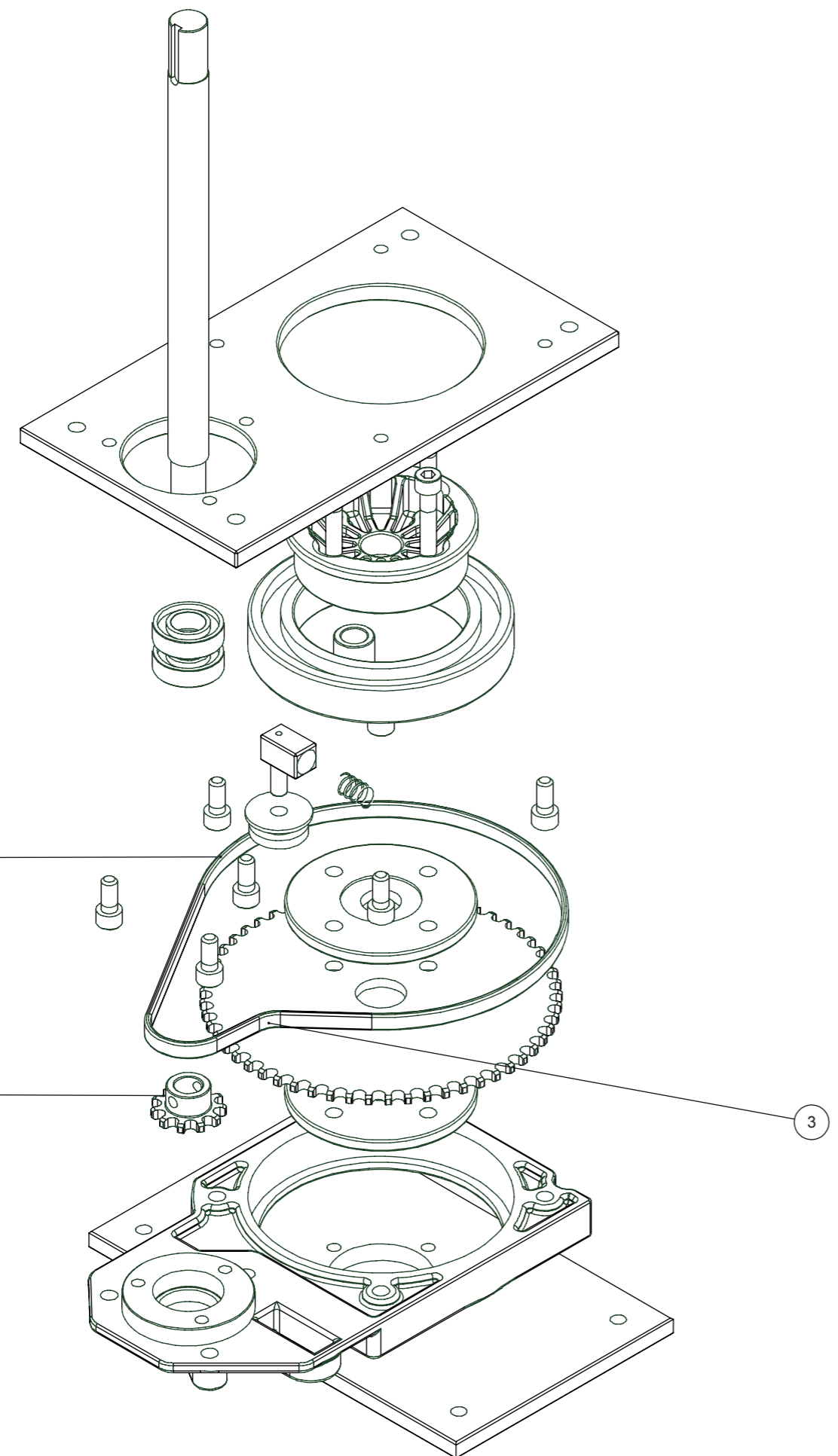


# Numatic International Spare Parts

## Model No: TTV678 & TRO650 Motor Wheel Gearbox Assembly

234605  
DRAWING: EXP-1033 ISS:A02  
11/11/2008

NB: FOR WIRING SEE DRAWING: WD-0359, DRW-15631, DRW-13416, DRW-14741



# Numatic International Spare Parts

## Model No: TTV678 & TRO650 Motor Wheel Gearbox Assembly

POS:	ITEM NO:	DESCRIPTION:	COMMENTS:
1	208151	PINION	
2	208152	STEERING CHAIN	
3	208153	STEERING CHAIN MASTER LINK	



**WARNING**  
Seek guidance from Numatic team before use.  
Technical information supplied as guidance for use by suitably qualified personnel only.  
Numatic International Limited accepts no liability for misuse or negligence.



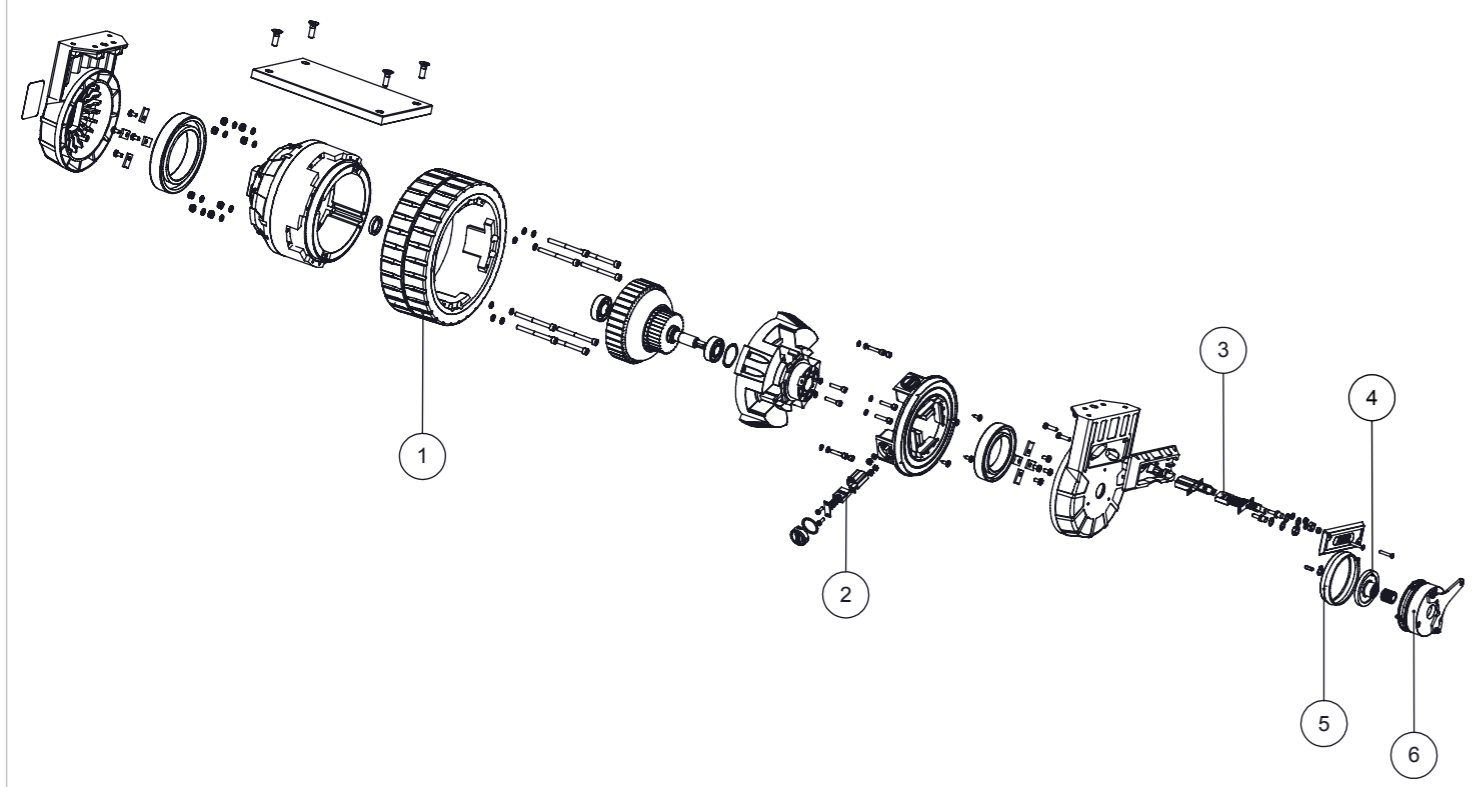


# Numatic International Spare Parts

## Model No: TTV678 & TRO650 Motor Wheel & Brake Assembly

234604  
DRAWING: EXP-1032 ISS:A02  
05/01/2009

NB: FOR WIRING SEE DRAWING: WD-0359, DRW-15631, DRW-13416, DRW-14741



# Numatic International Spare Parts

## Model No: TTV678 & TRO650 Motor Wheel & Brake Assembly

POS:	ITEM NO:	DESCRIPTION:	COMMENTS:
1	208145	WHEEL	
2	208146	ARMATURE BRUSH	
3	208147	MOTOR BRUSH	
4	208148	FRICTION DISC	
5	208149	RUBBER GASKET	
6	321506	MODIFIED ELECTRONICALLY RELEASED BRAKE C/W PINION & SCREWS	



**WARNING**  
Seek guidance from Numatic team before use.  
Technical information supplied as guidance for use by suitably qualified personnel only.  
Numatic International Limited accepts no liability for misuse or negligence.

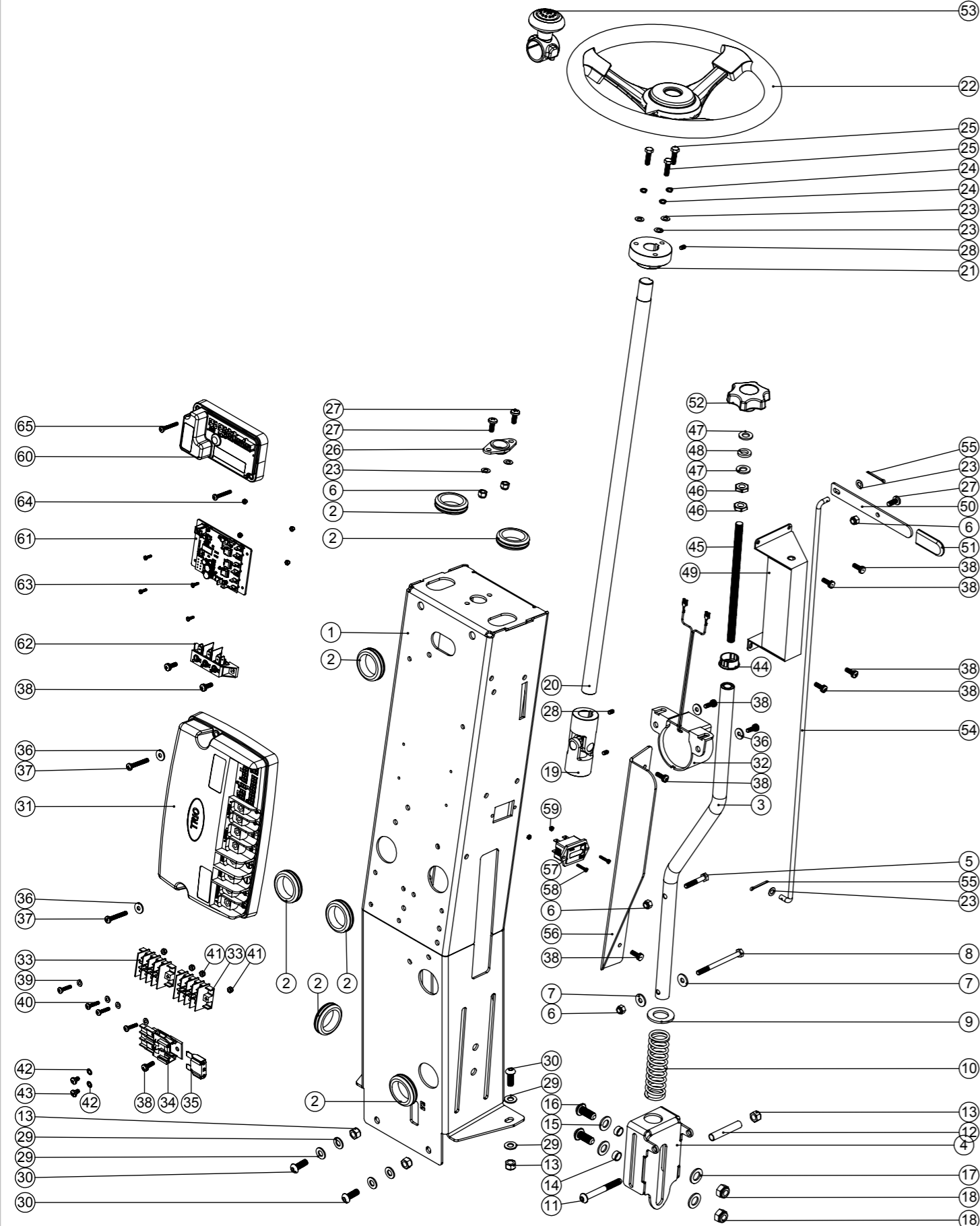


# Numatic International Spare Parts

## Model No: TTV678 & TRO650 Steering Column Assembly

NB: FOR WIRING SEE DRAWING: WD-0359, DRW-15631, DRW-13416, DRW-14741

234608  
DRAWING: EXP-1036 ISS:A04  
17/03/2009



**WARNING**  
 Seek guidance from Numatic team before use.  
 Technical information supplied as guidance for use by suitably qualified personnel only.  
 Numatic International Limited accepts no liability for misuse or negligence.



# Numatic International Spare Parts

## Model No: TTV678 & TRO650 Steering Column Assembly

ITEM:	PART No:	DESCRIPTION	COMMENTS:
1			
2	208029	GROMMET (32MM I/D)	
3	303817	BRUSH PRESSURE ADJUSTMENT TUBE WELD ASSEMBLY	
4	329864	BRUSH PRESSURE ADJUSTMENT SLIDE	
5	219064	M6 X 35MM LONG HEX BOLT	
6	219088	M6 NYLON INSERT NUT	
7	219008	M6 FORM G WASHER	
8	219915	M6 X 80MM LONG STAINLESS STEEL HEXAGONAL HEAD BOLT	
9	219949	M20 FORM 'A' WASHER	
10	208016	MANUAL BRUSH DECK ADJUSTMENT SPRING	
11	219806	M8 X 70MM LONG SOCKET BUTTON HEAD BOLT	
12	391199	54MM LONG X 10MM DIAMETER STAINLESS STEEL TUBE	
13	219078	M8 NYLON INSERT NUT	
14	303812	12.7MM DIAMETER X 18G X 5.5MM LONG STAINLESS STEEL TUBE	
15	219012	M10 FORM E WASHER	
16	219910	M10 X 25MM LONG SOCKET BUTTON HEAD STAINLESS STEEL SCREW	
17	219911	PLASTIC WASHER	
18	219649	M10 NYLON INSERT NUT	
19	206936	UNIVERSAL JOINT	
20	206940	STEERING SHAFT	
21	206960	WHEEL HUB (TO SUIT 300MM STEERING WHEEL)	
22	206961	300MM STEERING WHEEL C/W CENTRE CAP	
23	219007	M6 FORM B WASHER	
24	219549	M6 SINGLE COIL WASHER	
25	219455	M6 X 20MM LONG HEX HEAD SCREW	
26	208110	IGUS (R) 2 BOLT PLAIN BEARING 20MM I/D	
27	219618	M6 X 16MM LONG POZI PAN SCREW	
28	219784	M5 X 8MM LONG BLACKODISED GRUB SCREW	
29	219010	M8 FORM A WASHER	
30	219658	M8 X 22MM LONG SOCKET BOLT	
31	208169	PG CONTROLLER (Trio+HD 100) (MK2)	TTV678
32	321407	HORN & LEAD ASSEMBLY	
33	221095	TERMINAL BLOCK (4 POLE X 6 WAY/TERMINALS)	TRO650 - ONE BLOCK ONLY
34	230102	FUSE HOLDER RATED AT 60 AMPS	TTV678
35	221091	20 AMP MAXI FUSE	TTV678
36	219005	M5 FORM G WASHER	TTV678
37	220033	M5 X 35MM LONG POZI PAN SCREW	TTV678
38	219045	M5 X 16MM LONG POZI PAN SEMS SCREW	
39	219206	M4 FORM A WASHER	
40	21990V	M4 X 20MM LONG POZI PAN SCREW	
41	219083	M4 NYLON INSERT NUT	
42	219016	M5 SHAKEPROOF WASHER	
43	219864	M5 X 8MM LONG POZI PAN SCREW	
44	208021	19MM (3/4 INCH) SNAP BUSHING	
45	219969	M10 X 1.5MM X 190MM LONG S/S THREADED BAR	
46	219951	A4 (STAINLESS STEEL) M10 HEX LOCK NUT (HALF NUT)	
47	219449	M10 FORM A WASHER	
48	219964	NYLON WASHER (18MM O/D X 10.4MM I/D X 3MM THICK)	
49	329863	BRUSH PRESSURE ADJUSTMENT BRACKET	
50	329850	RELEASE HANDLE	
51	391226	BRUSH DECK RELEASE LEVER COVER	
52	208354	M10 LOBE KNOB	
53	208104	STEERING WHEEL KNOB	
54	391195	PEDAL LATCH RELEASE ROD	
55	208030	COTTER PIN (2.4MM X 38.1MM)	
56	329888	STEERING COLUMN SPLASH GAURD	
57	208178	HOURS METER	TTV678
	392355	TRO HOURS METER BLANKING PLATE	TRO650
58	219500	M3 X 16MM LONG STAINLESS STEEL SLOT SCREW	TTV678
	221151	M4 X 12MM LONG POZI PAN SCREW	TRO650
59	219502	M3 STAINLESS STEEL FULL NUT	TTV678
	219687	M4 STAINLESS STEEL NYLON INSERT NUT	TRO650
60	330179	PROGRAMMED 70A MOTOR CONTROLLER (TRO650)	TRO650
61	208566	TTV5565/200T DC DRIVE PCB WITH DETERGENT CONTROL REDUCED FLOW RATE - (WHISPER MODE)	TRO650
62	206788	TERMINAL BLOCK	TRO650
63	219236	M3 X 10MM LONG SLOT SCREW	TRO650
64	219070	M3 NYLON INSERT NUT	TRO650
65	219321	M4 X 30MM LONG POZI PAN SCREW	TRO650

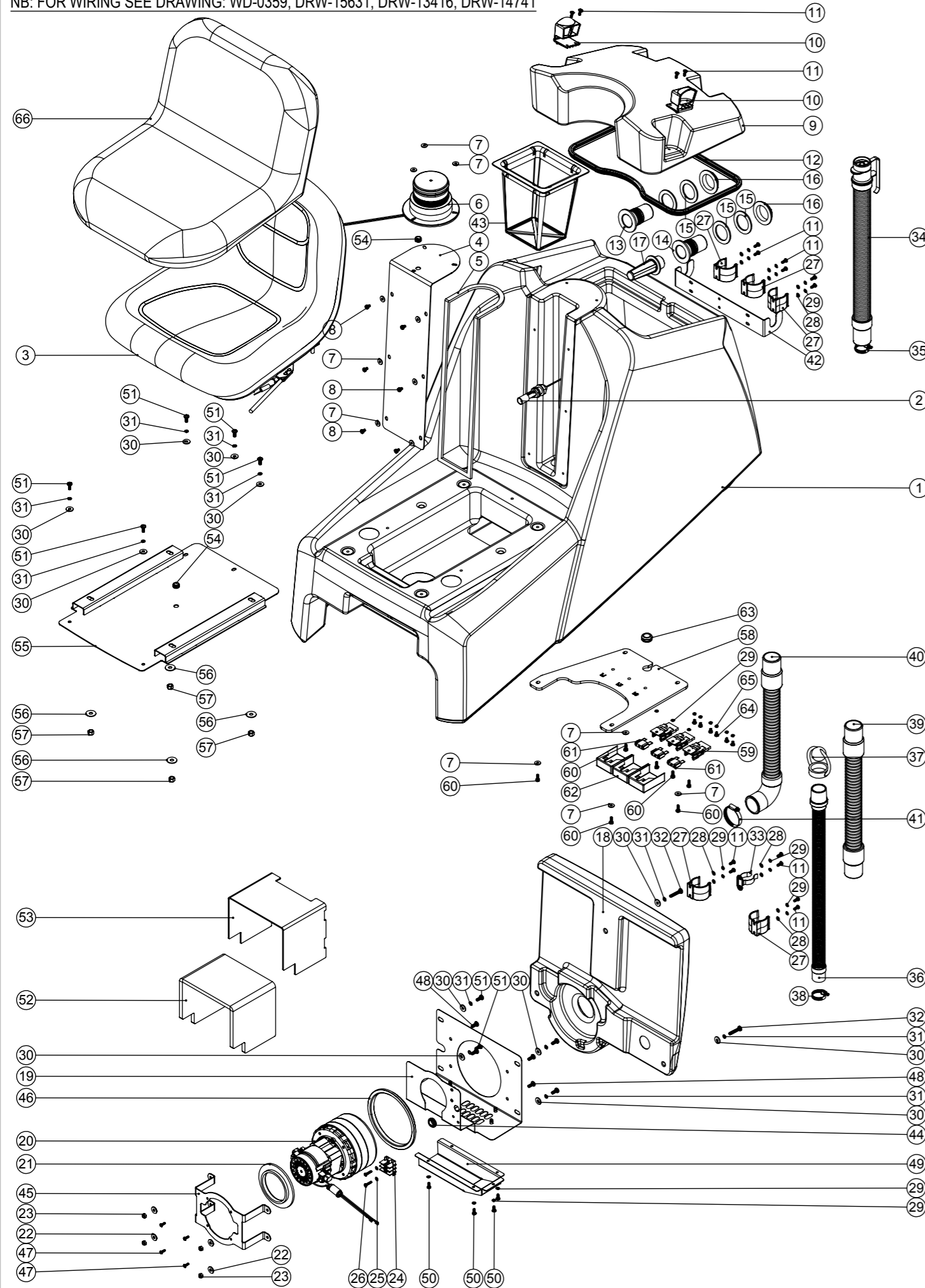


# Numatic International Spare Parts

**Model No:** TTV678 & TRO650 TOP TANK / LIGHT / VAC POD & HOSE ASSEMBLY

234612  
DRAWING: EXP-1040 ISS:A10  
11/10/2014

NB: FOR WIRING SEE DRAWING: WD-0359, DRW-15631, DRW-13416, DRW-14741



# Numatic International Spare Parts

**Model No:** TTV678 & TRO650 TOP TANK / LIGHT / VAC POD & HOSE ASSEMBLY

ITEM:	PART No:	DESCRIPTION	COMMENTS:
1	229837	TOP TANK MOULDING	
2	206944	FLOAT SWITCH	
3	206934	MILSCO MID BACK SEAT	
	208163	OPERATOR PRESENCE SEAT SWITCH	NOT SHOWN SEPARATELY
4	303824	VARIO LIGHT BRACKET NUTSERTED ASSEMBLY	
5	212997	6MM X 12MM X 12METERS ROLL INSEAL	
6	321413	CURTIS MULTIVOTAGE XENON BEACON & LEAD ASSEMBLY	
	208164	LIGHT AMBER LENS	NOT SHOWN SEPARATELY
	208165	LIGHT BULB	NOT SHOWN SEPARATELY
	208166	LIGHT MOUNTING RING	NOT SHOWN SEPARATELY
7	219005	M5 FORM G WASHER	
8	219047	M5 X 10MM LONG POZI PAN SEMS SCREW	
9	229836	TTV SEPARATOR MOULDING	
10	229494	CLIP MOULDING	
11	219049	M5 X 12MM LONG POZI PAN SCREW	
12	391209	1225MM LONG SEALING STRIP	
13	237526	38MM RED DRAIN HOSE CONNECTOR	
14	237018	38MM DRAIN HOSE CONNECTOR	
15	219310	RUBBER WASHER	
16	206116	BLACK NUT	
17	206265	TT/B 345 BARREL FILTER	
18	237021	VARIO 3 STAGE BACK DOOR MOULDING	
19	303886	NUTSERTED 3 STAGE MOTOR PLATE	
20	303880	24V PERIPHERAL 3-STAGE VAC MOTOR & TERMINAL ASSEMBLY	
21	202008	MOTOR CAP GASKET	
22	219647	M6 FORM G STAINLESS STEEL WASHER	
23	219642	M6 STAINLESS STEEL NYLON INSERT NUT	
24	220114	2 WAY TERMINAL BLOCK	
25	219206	M4 FORM A WASHER	
26	21990V	M4 X 20MM LONG POZI PAN SCREW	
27	237382	ACETAL HOSE CLIP MOULDING	
28	219003	M5 FORM A STEEL WASHER	
29	219016	M5 SHAKEPROOF WASHER	
30	219008	M6 FORM G WASHER	
31	219544	M6 SHAKEPROOF WASHER	
32	219268	M6 X 35MM LONG POZI PAN SCREW	
33	206818	HOSE CLIP	
34	213047	38MM X 470MM LONG 3:1 STRETCH HOSE C/W CAP & STRAP	
35	206209	A.B.A HOSE CLIP	
36	213025	600MM - 630MM LONG DUMP HOSE ASSEMBLY	
37	206111	HOSE CLOSURE	
38	219674	30/40MM DIAMETER STAINLESS STEEL JUBILEE CLIP	
39	208192	38MM FLOOR TOOL SUCTION HOSE (1900MM LONG)	
40	208191	38MM VAC SUCTION HOSE (1250MM LONG)	
41	219919	32MM-50MM STAINLESS STEEL HOSE CLIP	
42	329904	RIDE-ON SQUEEGEE STORAGE BRACKET	
43	206439	TANK FILTER	
44	219631	19MM GROMMET	
45	329987	MOTOR BRACKET	
46	237032	>TPE< 3 STAGE MOTOR GASKET	
47	219569	No8 X 1/2 INCH LONG POZI PAN STAINLESS STEEL PLASTITE SCREW	
48	219646	M6 X 16MM LONG POZI PAN STAINLESS STEEL SCREW	
49	329989	SILENCER BOX	
50	219740	M5 X 12MM LONG STAINLESS STEEL POZI PAN SCREW	
51	219618	M6 X 16MM LONG POZI PAN SCREW	
52	208274	SILENCER FOAM	
53	392019	SILENCER SHROUD	
54	219680	GROMMET	
55	404194	SEAT PLATE WELD ASSEMBLY PAINT SILVER GREY	
56	221154	M8 FORM C WASHER	
57	219078	M8 NYLON INSERT NUT	
58	304477	TRO NUTSERTED TOP TANK FUSE PLATE	
59	230102	FUSE HOLDER RATED AT 60 AMPS	
60	219045	M5 X 16MM LONG POZI PAN SEMS SCREW	
61	221047	40 AMP MAXI FUSE	
62	208802	MAXI-FUSE HOLDER COVER	
63	208143	20MM GROMMET X 6MM PANEL THICKNESS	
64	219864	M5 X 8MM LONG POZI PAN SCREW	
65	219648	M5 SINGLE COIL WASHER	
66	280001	VARIO SEAT COVER	



**WARNING**  
Seek guidance from Numatic team before use.  
Technical information supplied as guidance for use by suitably qualified personnel only.  
Numatic International Limited accepts no liability for misuse or negligence.



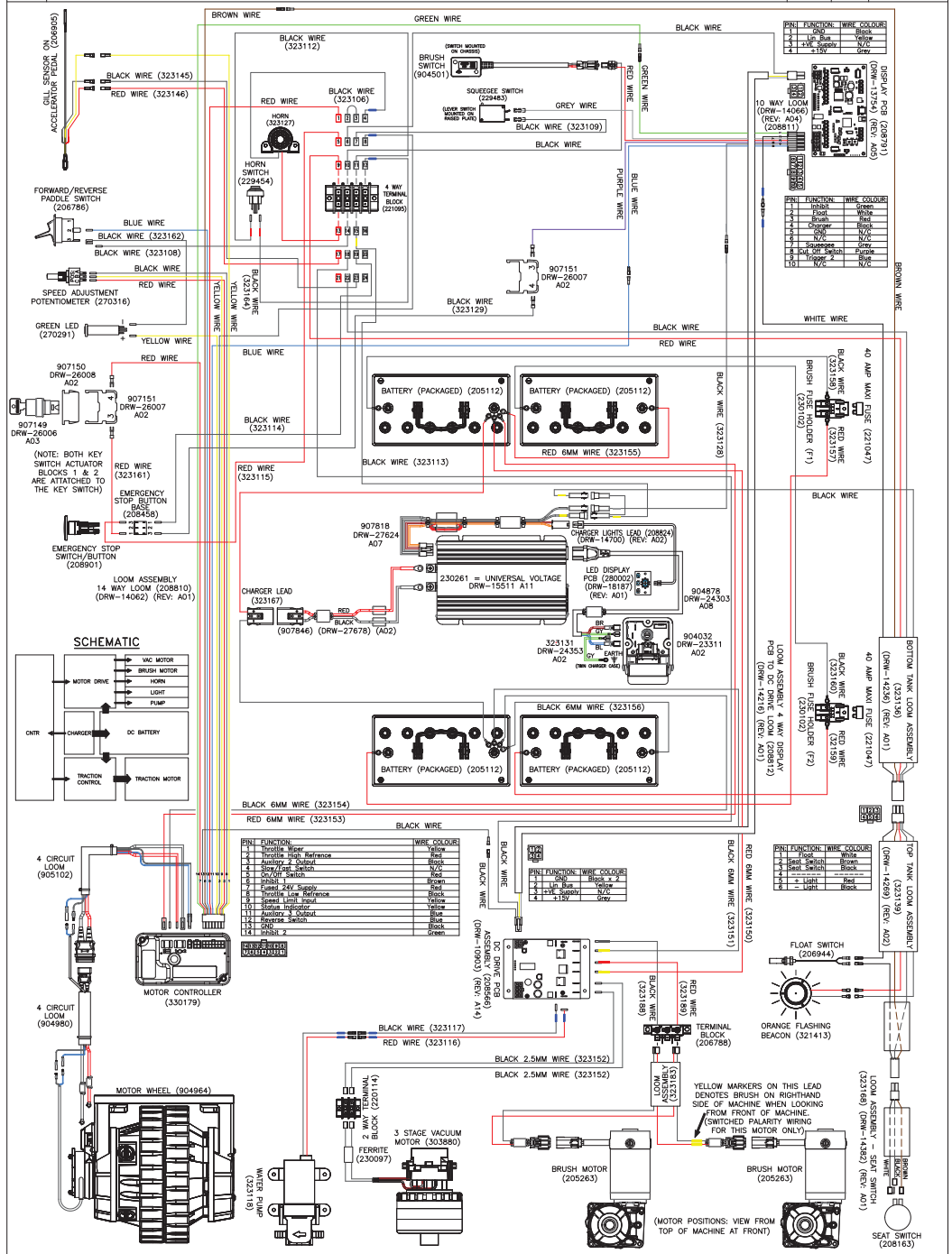
# WIRING DIAGRAM

COMP. No  
123407

DRG. No  
DRW-13416

## WIRING DIAGRAM.TWINTEC.1S.3WCR.230.56.TD.PLG

ISSUE	REVISION	DRAWN/APPD.	DATE
A21	KEYSWITCH UPDATED REF PROJ-1310	AM MC	18/01/2018



# WIRING DIAGRAM

COMP. No  
123407

DRG. No  
DRW-13416

WIRING DIAGRAM.TWINTC.1S.3WCR.230.56.TD.PLG

ISSUE	REVISION	DRAWN/APPD.	DATE
A21	KEYSWITCH UPDATED REF PROJ-1310	AM MC	18/01/2018

