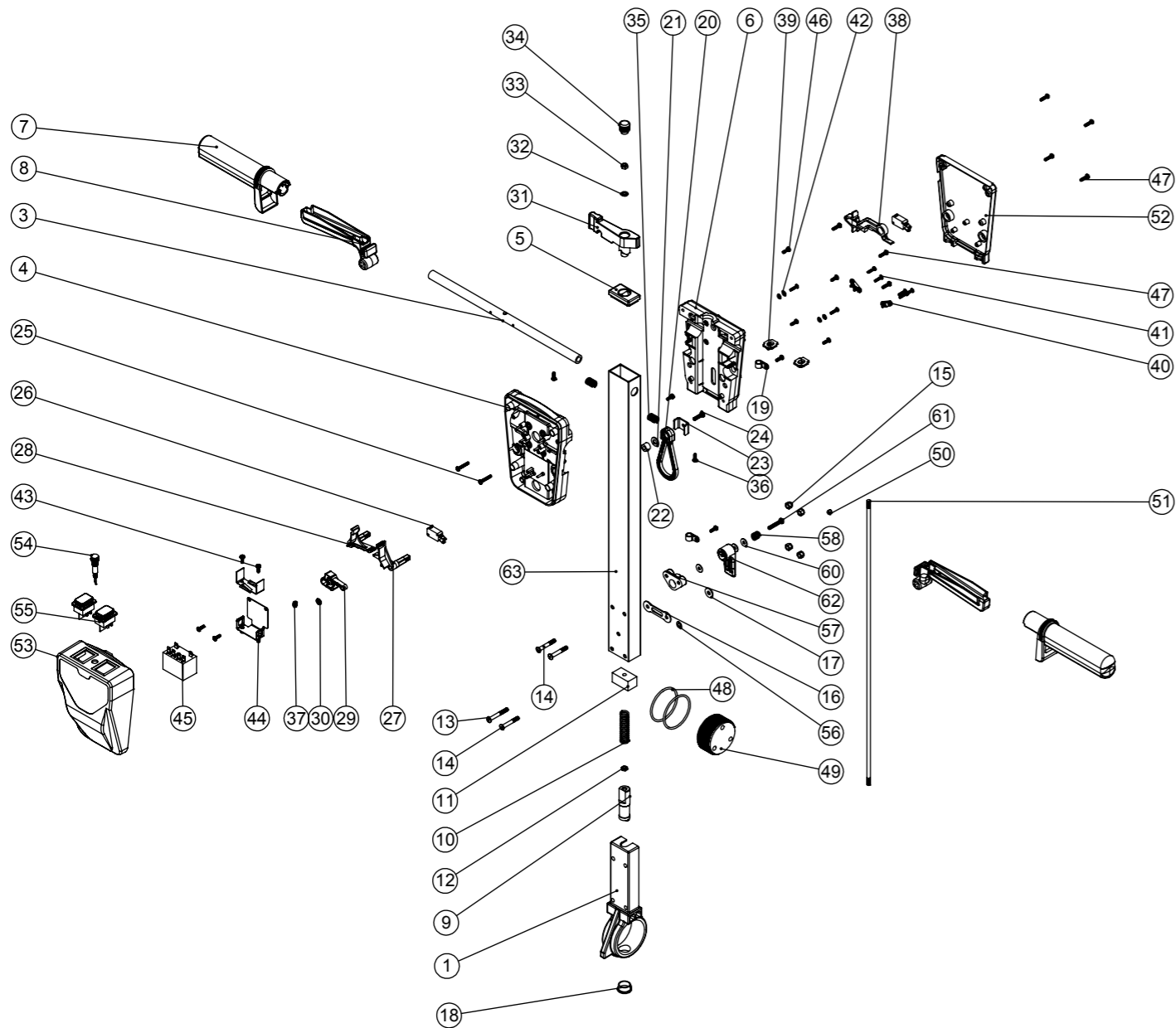


Numatic International Spare Parts

Model No: TT 1840 (MAINS) HANDLE EXPLODED DRAWING ASSEMBLY

234938
DRAWING: DRW-13355 ISS:A01
03/04/2013

NB: FOR WIRING SEE DRAWING: DRW-13476



Numatic International Spare Parts

Model No: TT 1840 (MAINS) HANDLE EXPLODED DRAWING ASSEMBLY

| ITEM NO. | PART NO. | DESCRIPTION | QTY. |
|----------|----------|-----------------------------------------------|------|
| 1 | 229081 | HANDLE CASTING MACHINED | 1 |
| 3 | 338269 | CROSS TUBE | 1 |
| 4 | 227576 | FRONT INNER HALF MOULDING | 1 |
| 5 | 227582 | HANDLE PLUG MOULDING | 1 |
| 6 | 227577 | REAR INNER HALF MOULDING | 1 |
| 7 | 227580 | HAND GRIP MOULDING | 2 |
| 8 | 227581 | TRIGGER MOULDING | 2 |
| 9 | 229073 | GEAR LOCKING PIN | 1 |
| 10 | 229138 | SPRING | 1 |
| 11 | 229030 | ANTI VIBRATION PAD | 1 |
| 12 | 219099 | M6 HALF NUT | 1 |
| 13 | 219881 | M6 X 45MM SOCKET BUTTON HEAD SCREW | 1 |
| 14 | 219807 | M6 X 40MM LONG SOCKET BUTTON HEAD BOLT | 3 |
| 15 | 219088 | M6 NYLON INSERT NUT | 4 |
| 16 | 229139 | CABLE CLAMP | 1 |
| 17 | 219008 | M6 FORM G WASHER | 1 |
| 18 | 229099 | 25MM DIA HOLE PLUG | 1 |
| 19 | 219393 | P CLIP | 2 |
| 20 | 226008 | STRESS RELIEF | 1 |
| 21 | 219010 | M8 FORM A WASHER | 1 |
| 22 | 226006 | SPACER (BLACK) | 1 |
| 23 | 329231 | STRESS RELIEF BRACKET | 1 |
| 24 | 219054 | M5 X 20MM LONG POZI PAN SCREW | 1 |
| 25 | 219811 | NO8 X 1 INCH LONG POZI-PAN SELF TAP SCREW | 2 |
| 26 | 229483 | SNAP ACTION SWITCH | 2 |
| 27 | 227585 | LEFT HAND SWITCH OPERATING LEVER MOULDING | 1 |
| 28 | 227586 | RIGHT HAND SWITCH OPERATING LEVER MOULDING | 1 |
| 29 | 227587 | CENTRE SWITCH OPERATING LEVER MOULDING | 1 |
| 30 | 219805 | 4MM SPIREFIX | 1 |
| 31 | 227583 | ADJUSTMENT LEVER MOULDING | 1 |
| 32 | 219493 | M6 NYLON WASHER | 1 |
| 33 | 219642 | M6 STAINLESS STEEL NYLON INSERT NUT | 1 |
| 34 | 20638V | 19MM BLACK TUBE END STOP | 1 |
| 35 | 219803 | TRIGGER COMPRESSION SPRING | 2 |
| 36 | 219270 | No8 X 1/2 INCH LONG POZI PAN SELF TAP SCREW | 4 |
| 37 | 219804 | SWITCH COMPRESSION SPRING | 1 |
| 38 | 227584 | INTERLOCK LEVER MOULDING | 1 |
| 39 | 237467 | BLANKING PLUG WITH HOLE | 2 |
| 40 | 229669 | LOLINE HANDLE CABLE CLAMP | 2 |
| 41 | 219107 | No6 X 5/8 INCH LONG POZI PAN PLASTITE SCREW | 6 |
| 42 | 219206 | M4 FORM A WASHER | 4 |
| 43 | 219471 | M4 X 12MM LONG POZI PAN SEMS SCREW | 3 |
| 44 | 303526 | NUTSERTED RELAY MOUNTING BRACKET | 1 |
| 45 | 206575 | 240V / 25A RELAY | 1 |
| 46 | 219101 | No8 X 1/2 INCH LONG POZI PAN PLASTITE SCREW | 6 |
| 47 | 219105 | No8 X 5/8 INCH LONG POZI PAN PLASTITE SCREW | 8 |
| 48 | 219254 | O RING 3MM DIA X 60MM I/D | 2 |
| 49 | 229074 | ADJUSTMENT GEAR | 1 |
| 50 | 229009 | BLANKING PLUG | 1 |
| 51 | 215029 | 610MM HANDLE LOCKING ROD | 1 |
| 52 | 227579 | REAR COVER MOULDING | 1 |
| 53 | 229748 | FRONT COVER MOULDING (MAINS & BATTERY) | 1 |
| 54 | 220812 | 230V NEON INDICATOR & RED LENS | 1 |
| 55 | 208757 | BLACK DPST ON/OFF SWITCH | 2 |
| 56 | 219007 | M6 FORM B WASHER | 1 |
| 57 | 227806 | CABLE RELEASE BASE MOULDING | 1 |
| 58 | 206599 | SPRING (REF:C5514370) | 1 |
| 59 | 219076 | M5 NYLON INSERT NUT | 1 |
| 60 | 219644 | M5 FORM G STAINLESS STEEL WASHER | 3 |
| 61 | 219720 | M5 X 30MM LONG STAINLESS STEEL POZI PAN SCREW | 1 |
| 62 | 227807 | CABLE RELEASE TOP MOULDING | 1 |
| 63 | 429138 | TT 1840 HANDLE TUBE (MAINS) PAINTED | 1 |
| 64 | 206500 | RELAY BRACKET | 1 |

WARNING

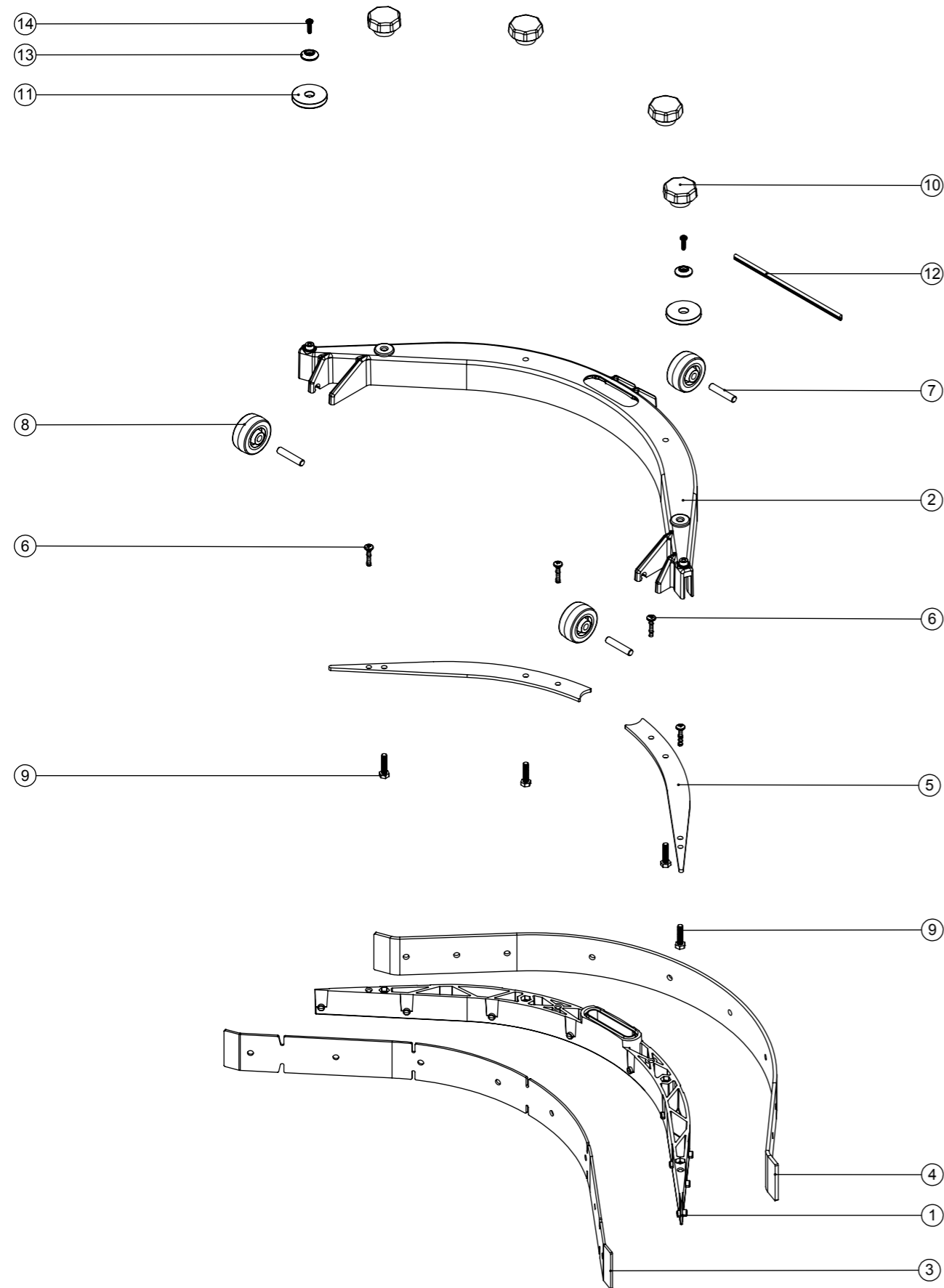
Seek guidance from Numatic team before use.
Technical information supplied as guidance for use by suitably qualified personnel only.
Numatic International Limited accepts no liability for misuse or negligence.



Numatic International Spare Parts

Model No: TTB 1840 SQUEEGEE EXPLODED DRAWING ASSEMBLY

234807
DRAWING: DRW-7011 ISS:A04
08/08/2012



Numatic International Spare Parts

Model No: TTB 1840 SQUEEGEE EXPLODED DRAWING ASSEMBLY

| ITEM NO. | PART NO. | DESCRIPTION | QTY. |
|----------|----------|----------------------------------------------------|------|
| 1 | 237235 | TTB 1840 SQUEEGEE INNER MOULDING | 1 |
| 2 | 237236 | TTB 1840 SQUEEGEE OUTER MOULDING | 1 |
| 3 | 208456 | TTB 1840 SQUEEGEE FRONT BLADE | 1 |
| 4 | 208457 | TTB 1840 SQUEEGEE REAR BLADE | 1 |
| 5 | 429130 | TTB 1840 SQUEEGEE SIDE PLATE Z/PL | 2 |
| 6 | 219568 | No8 X 3/4 INCH LONG POZI PAN STAINLESS STEEL SCREW | 4 |
| 7 | 208610 | TTB 1840 SQUEEGEE AXLE | 3 |
| 8 | 208454 | TTB 1840 SQUEEGEE WHEEL | 3 |
| 9 | 291029 | M5.20MM LG.HEX.SCREW S/S | 4 |
| 10 | 208455 | TTB 1840 SQUEEGEE KNOB | 4 |
| 11 | 237266 | TTB 1840 BUFFER WHEEL | 2 |
| 12 | 209077 | SQUEEGEE SEAL EXTRUSION | 1 |
| 13 | 208603 | NYLON FINISHING WASHER (BLACK) | 2 |
| 14 | 291053 | 3.5 X 12MM POZI PAN PLASTITE SCREW S/S | 2 |



WARNING
Seek guidance from Numatic team before use.
Technical information supplied as guidance for use by suitably qualified personnel only.
Numatic International Limited accepts no liability for misuse or negligence.

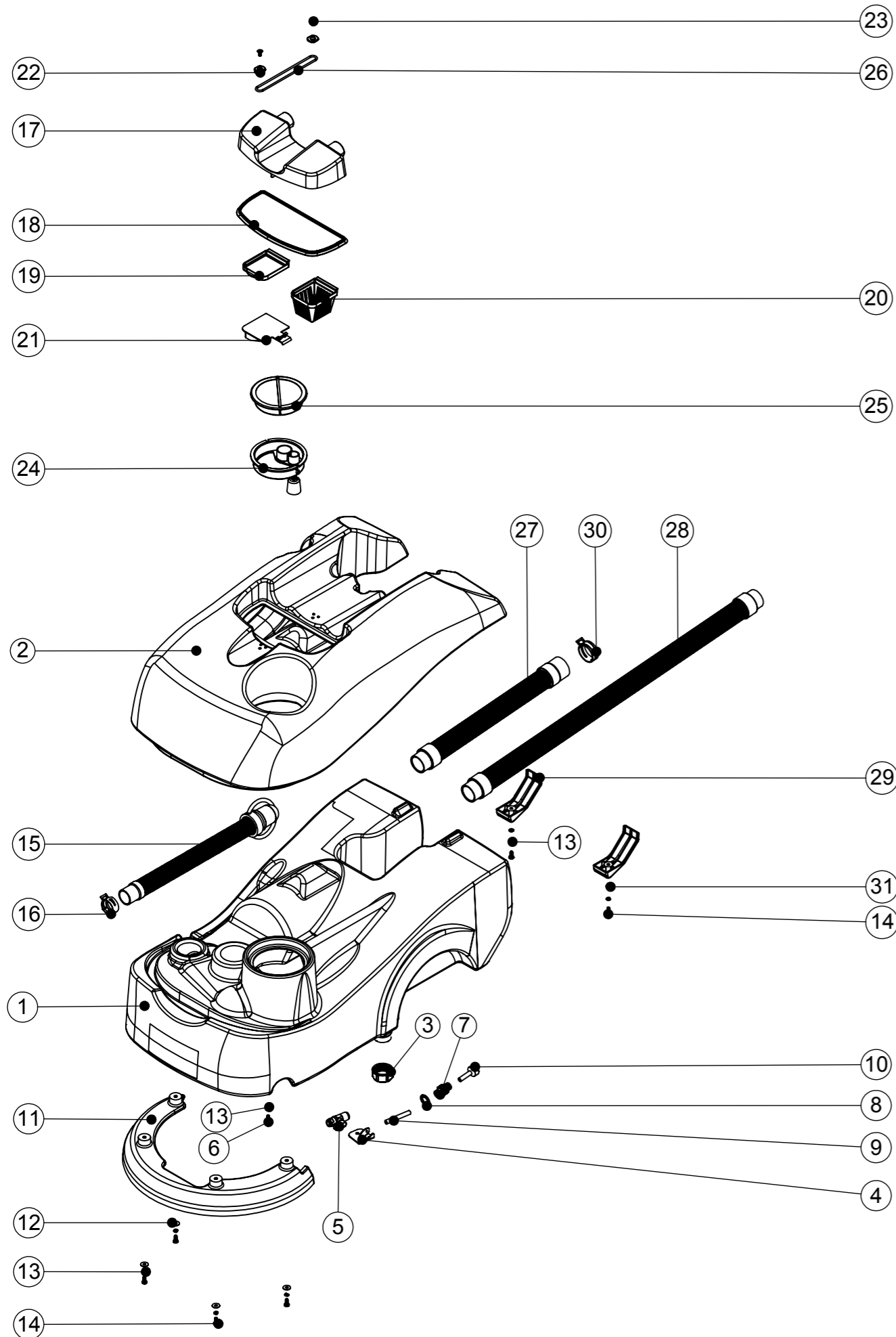


Numatic International Spare Parts

Model No: TT 1840 TANK ASSEMBLY EXPLODED DRAWING

234939
DRAWING: DRW-13251 ISS:A01
27/02/2013

NB: FOR WIRING SEE DRAWING: WD-0????



WARNING
Seek guidance from Numatic team before use.
Technical information supplied as guidance for use by suitably qualified personnel only.
Numatic International Limited accepts no liability for misuse or negligence.



Numatic International Spare Parts

Model No: TT 1840 TANK ASSEMBLY EXPLODED DRAWING

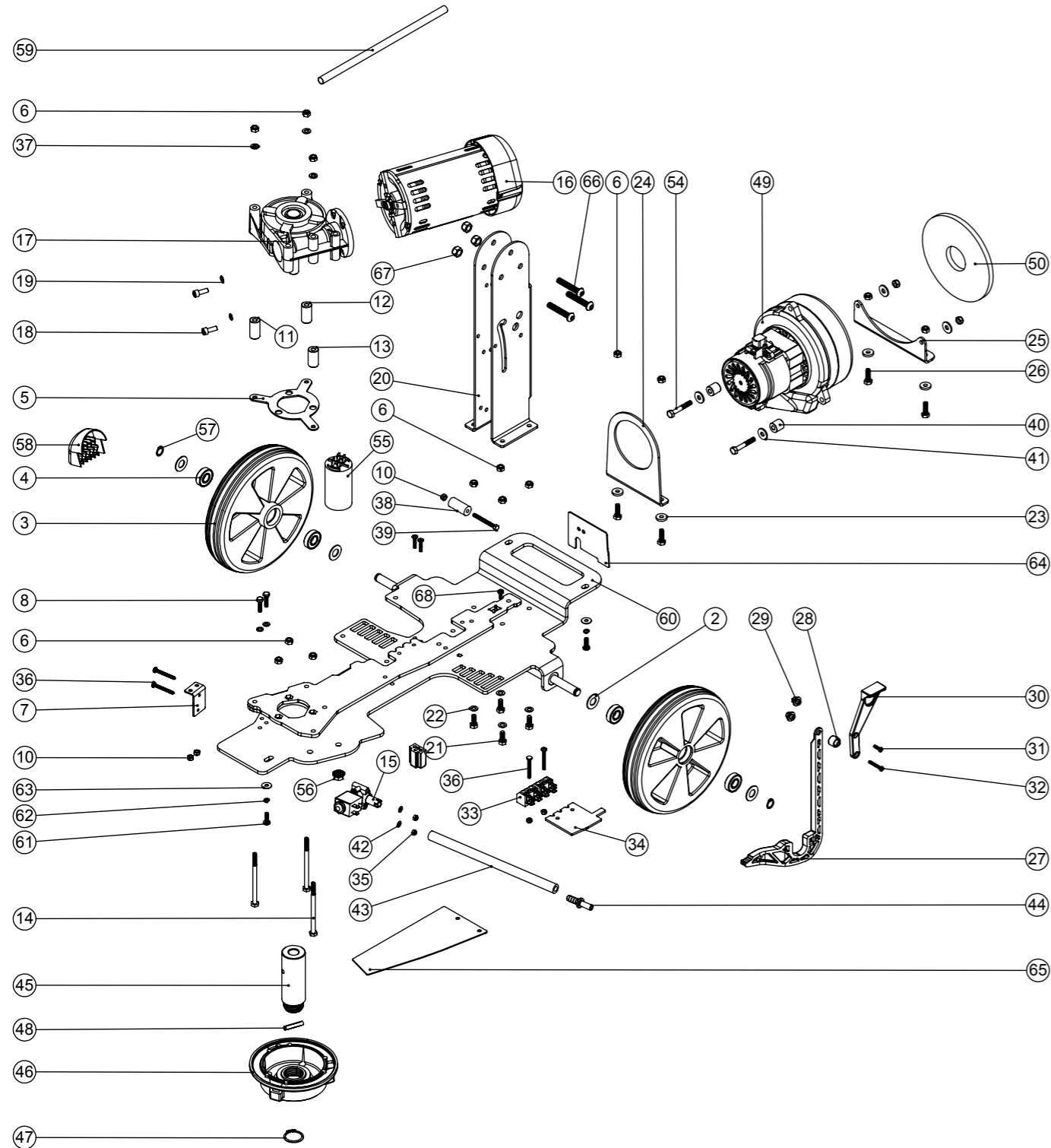
| ITEM NO. | PART NO. | DESCRIPTION | QTY. |
|----------|----------|-----------------------------------------------------------|------|
| 1 | 237464 | TT 1840 CLEAN TANK (MAINS) | 1 |
| 2 | 237465 | TTB 1840 COLLECTION TANK | 1 |
| 3 | 208448 | TANK DRAIN CAP | 1 |
| 4 | 392125 | TTB 1840 TAP PLATE | 1 |
| 5 | 216260 | MINI BALL VALVE | 1 |
| 6 | 219668 | M5 X 10MM LONG POZI PAN STAINLESS STEEL SCREW | 1 |
| 7 | 208522 | 8MM PUSH FIT METAL BULKHEAD FITTING | 1 |
| 8 | 208525 | BONDED SEAL | 1 |
| 9 | 303960 | TANK FILTER TUBE | 1 |
| 10 | 303961 | TANK FILTER ASSEMBLY | 1 |
| 11 | 237233 | TTB 1840 DECK MOULDING | 1 |
| 12 | 219644 | M5 FORM G STAINLESS STEEL WASHER | 4 |
| 13 | 219861 | M5 SINGLE COIL STAINLESS STEEL WASHER | 7 |
| 14 | 219740 | M5 X 12MM LONG STAINLESS STEEL POZI PAN SCREW | 6 |
| 15 | 303997 | TTB 1840 DUMP HOSE ASSEMBLY | 1 |
| 16 | 208471 | CONSTANT TENSION CLIP | 1 |
| 17 | 237230 | TTB 1840 SEPARATOR MOULDING | 1 |
| 18 | 237418 | TTB 1840 SEPARATOR SEAL MOULDING | 1 |
| 19 | 237232 | TTB 1840 AIR FILTER PANEL | 1 |
| 20 | 237411 | TOP TANK FILTER | 1 |
| 21 | 237231 | TTB 1840 SHUT OFF FLAP | 1 |
| 22 | 237397 | O RING CLIP MOULDING | 2 |
| 23 | 291008 | M5 X 10MM LONG POZI PAN COUNTERSUNK STAINLESS STEEL SCREW | 2 |
| 24 | 303985 | TTB 1840 FILLER CAP ASSEMBLY | 1 |
| 25 | 237268 | FILLER CAP LID | 1 |
| 26 | 208715 | O RING (3mmDIA.95mm) | 1 |
| 27 | 213055 | TTB 1840 VAC HOSE C/W CUFFS | 1 |
| 28 | 213054 | SUCTION HOSE | 1 |
| 29 | 237466 | SKID PLATE MOULDING | 2 |
| 30 | 208537 | VAC HOSE CONSTANT TENSION CLIP | 1 |
| 31 | 219355 | M5 FORM A STAINLESS STEEL WASHER | 2 |

Numatic International Spare Parts

Model No: TT 1840 MAINS BASE ASSEMBLY DRAWING (220-240V 50/60Hz)

234937
DRAWING: DRW-13250 ISS:A01
03/04/2013

NB: FOR WIRING SEE DRAWING: DRW-13476



WARNING

Seek guidance from Numatic team before use.
Technical information supplied as guidance for use by suitably qualified personnel only.
Numatic International Limited accepts no liability for misuse or negligence.



Numatic International Spare Parts

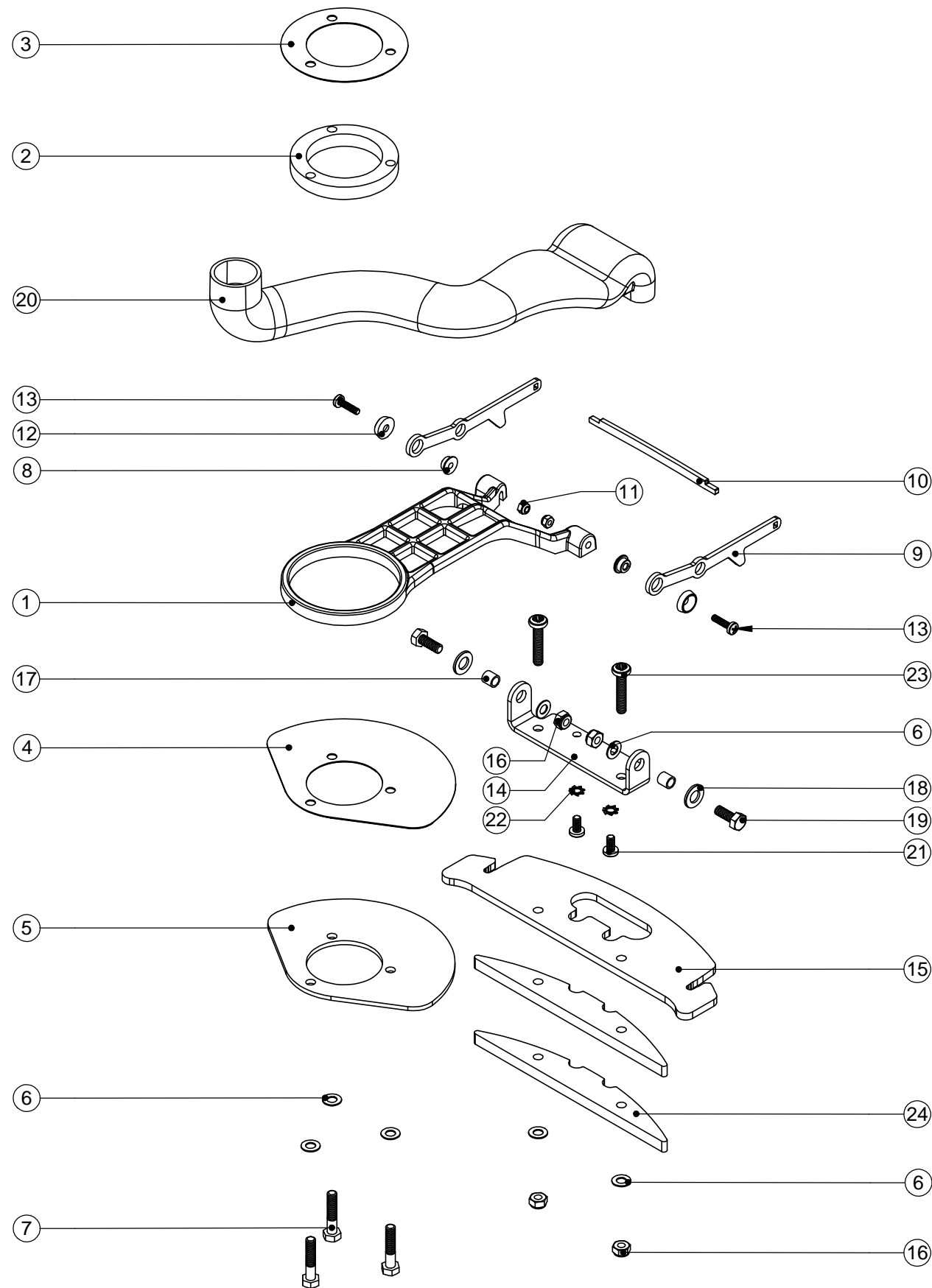
Model No: TT 1840 MAINS BASE ASSEMBLY DRAWING (220-240V 50/60Hz)

| ITEM NO. | PART NO. | DESCRIPTION | QTY. |
|----------|----------|------------------------------------------------------------------|------|
| 60 | 429137 | TT 1840 CHASIS (MAINS) Z/PL | 1 |
| 2 | 208490 | TTB 1840 WHEEL WASHER | 4 |
| 3 | 208556 | TT/B 1840 WHEEL | 2 |
| 4 | 206637 | STAINLESS STEEL BEARING | 4 |
| 5 | 429127 | NUT RETAINING PLATE Z/PL | 1 |
| 6 | 219642 | M6 STAINLESS STEEL NYLON INSERT NUT | 16 |
| 7 | 392117 | TTB 1840 SOLENOID BRACKET | 1 |
| 8 | 291029 | M5.20MM LG.HEX.SCREW S/S | 2 |
| 9 | 219355 | M5 FORM A STAINLESS STEEL WASHER | 2 |
| 10 | 219633 | M5 STAINLESS STEEL NYLON INSERT NUT | 3 |
| 11 | 208461 | 30MM GEARBOX SPACER | 1 |
| 12 | 208460 | 29MM GEARBOX SPACER | 1 |
| 13 | 208459 | 28MM GEARBOX SPACER | 1 |
| 14 | 291021 | M6 X 90MM LONG STAINLESS STEEL HEXAGONAL HEAD BOLT | 3 |
| 15 | 220348 | SOLENOID VALVE 240V 50/60HZ | 1 |
| 16 | 205255 | 220-240V 50/60Hz BRUSH DRIVE MOTOR WITH FAN | 1 |
| 17 | 206754 | EMD GEARBOX (GB12) (18.67:1 RATIO) | 1 |
| 17 | 206791 | EMD GEARBOX (GB12) (21:1 RATIO) - 60Hz MACHINES ONLY | 1 |
| 18 | 219887 | M6 X 16MM STAINLESS STEEL CAP HEAD SCREW | 2 |
| 19 | 219544 | M6 SHAKEPROOF WASHER | 2 |
| 20 | 392092 | TTB 1840 HANDLE MOUNTING BRACKET | 1 |
| 21 | 219719 | M6 X 16MM LONG HEXAGONAL STAINLESS STEEL HEAD BOLT | 4 |
| 22 | 219560 | M6 FORM B STAINLESS STEEL WASHER | 4 |
| 23 | 208472 | RUBBER SPACER | 4 |
| 24 | 429124 | TTB 1840 FRONT MOTOR PLATE | 1 |
| 25 | 429125 | TTB 1840 REAR VAC MOTOR PLATE | 1 |
| 26 | 219976 | M6 X 20MM LONG HEXAGONAL HEAD SET SCREW | 4 |
| 27 | 237238 | TTB 1840 SQUEEGEE LIFT ARM | 1 |
| 28 | 237240 | TTB 1840 LIFT SPACER | 1 |
| 29 | 237241 | TTB 1840 SCREW END | 2 |
| 30 | 237239 | TTB 1840 SQUEEGEE LIFT HANDLE | 1 |
| 31 | 219667 | No6 X 1/2" LONG PLASTITE SCREW | 1 |
| 32 | 219602 | No6 X 1 INCH LONG POZI PAN PLASTITE SCREW | 1 |
| 33 | 208532 | TAB TERMINAL BLOCK 2 POLE | 2 |
| 34 | 392317 | RAISER PLATE | 1 |
| 35 | 219687 | M4 STAINLESS STEEL NYLON INSERT NUT | 4 |
| 36 | 219703 | M4 X 35MM LONG STAINLESS STEEL POZI PAN SCREW | 4 |
| 37 | 219870 | M6 FORM A WASHER STAINLESS STEEL | 3 |
| 38 | 208465 | TTB 1840 HANDLE SPACER | 1 |
| 39 | 219706 | M5 X 45MM LONG STAINLESS STEEL HEXAGONAL BOLT | 1 |
| 40 | 229187 | 15MM SPACER | 2 |
| 41 | 219008 | M6 FORM G WASHER | 4 |
| 42 | 219688 | M4 FORM A STAINLESS STEEL WASHER | 2 |
| 43 | 303962 | SOLENOID TUBE (230MM) | 1 |
| 44 | 206796 | BARBED CONNECTOR | 1 |
| 45 | 208447 | TTB 1840 DRIVE SHAFT | 1 |
| 46 | 314050 | TTB 1840 MODIFIED CHUCK | 1 |
| 47 | 230048 | 26MM EXTERNAL CIRCLIP | 1 |
| 48 | 219523 | GROOVED PIN | 1 |
| 49 | 205254 | 220-240V 2 STAGE VACUUM MOTOR WITH TANGENTIAL DISCHARGE AND TUBE | 1 |
| 50 | 208477 | MOTOR PAD | 1 |
| 54 | 21965V | M6 X 40MM LONG HEX BOLT | 2 |
| 55 | 220876 | 20 MFD MOTOR RUN CAPACITOR (450V) | 1 |
| 56 | 219754 | M8 FLANGED NUT | 1 |
| 57 | 219345 | 12MM EXTERNAL CIRCLIP | 2 |
| 58 | 237218 | TTB 1840 VAC DIFFUSER | 1 |
| 59 | 330103 | MOTOR WIRE SLEEVE (260MM CUT LENGTH) | 1 |
| 61 | 219547 | M5 X 16MM LONG POZI PAN STAINLESS STEEL SCREW | 3 |
| 62 | 219861 | M5 SINGLE COIL STAINLESS STEEL WASHER | 3 |
| 63 | 219644 | M5 FORM G STAINLESS STEEL WASHER | 3 |
| 64 | 304461 | TT1840 REAR SPLASH PLATE | 1 |
| 65 | 304462 | TT1840 MOTOR SPLASH PLATE | 1 |
| 66 | 219822 | M8 X 45MM LONG SOCKET BUTTON STAINLESS STEEL HEAD BOLT | 3 |
| 67 | 219639 | M8 STAINLESS STEEL NYLON INSERT NUT | 3 |
| 68 | 219471 | M4 X 12MM LONG POZI PAN SEMS SCREW | 1 |
| 69 | 237532 | UPPER LIFT BLOCK | 1 |

Numatic International Spare Parts

Model No: SWING ARM ASSEMBLY EXPLODED DRAWING

234839
DRAWING: DRW-10739 ISS:A01
31/10/2011



Numatic International Spare Parts

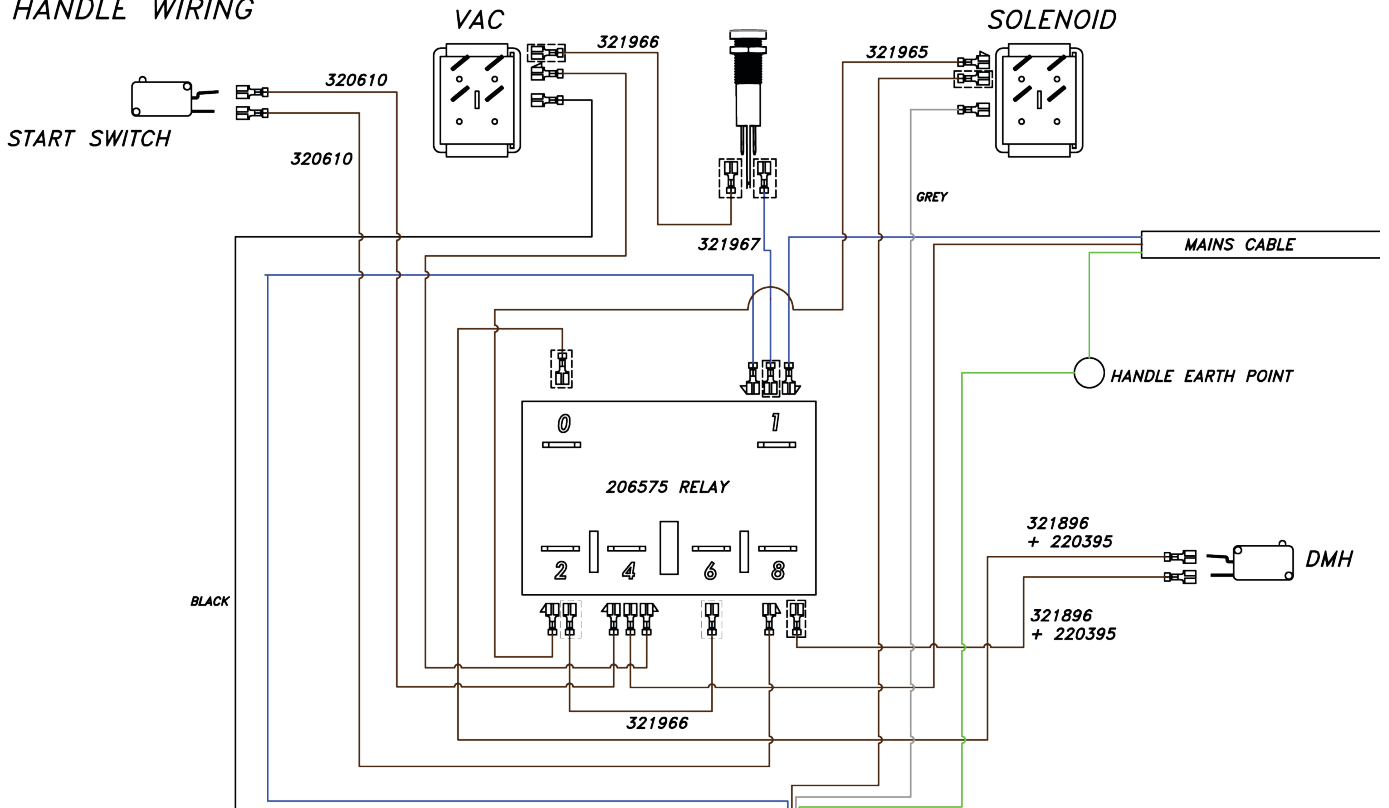
Model No: SWING ARM ASSEMBLY EXPLODED DRAWING

| ITEM NO. | PART No | DESCRIPTION | QTY. |
|----------|---------|-----------------------------------------------------|------|
| 1 | 429133 | TTB 1840 SWING ARM PAINTED | 1 |
| 2 | 208449 | TTB 1840 SWING ARM CENTRE PIVOT | 1 |
| 3 | 208491 | TTB 1840 NYLON DISC | 1 |
| 4 | 208482 | TTB 1840 SWING ARM NYLON PLATE | 1 |
| 5 | 429126 | TTB 1840 SWING ARM BOTTOM PLATE | 1 |
| 6 | 219560 | M6 FORM B STAINLESS STEEL WASHER | 7 |
| 7 | 291022 | M6 X 30MM LONG STAINLESS STEEL HEXAGONAL HEAD BOLT | 3 |
| 8 | 237265 | PIVOT BUSH | 2 |
| 9 | 392120 | TTB 1840 SQUEEGEE PIVOT ARM | 2 |
| 10 | 392124 | TTB 1840 SQUEEGEE LIFT PLATE | 1 |
| 11 | 219687 | M4 STAINLESS STEEL NYLON INSERT NUT | 2 |
| 12 | 219573 | SCREW INSULATOR | 2 |
| 13 | 219862 | M4 X 16MM LONG POZI PAN STAINLESS STEEL SCREW | 2 |
| 14 | 392119 | PIPE CONNECTING BRACKET | 1 |
| 15 | 429129 | TTB 1840 SQUEEGEE SKID PLATE | 1 |
| 16 | 219642 | M6 STAINLESS STEEL NYLON INSERT NUT | 4 |
| 17 | 208475 | 8MM SPACER | 2 |
| 18 | 219578 | M8 FORM A STAINLESS STEEL WASHER | 2 |
| 19 | 219719 | M6 X 16MM LONG HEXAGONAL STAINLESS STEEL HEAD BOLT | 2 |
| 20 | 330068 | FLUID TUBE PROCESSED | 1 |
| 21 | 219668 | M5 X 10MM LONG POZI PAN STAINLESS STEEL SCREW | 2 |
| 22 | 291020 | M5 STAINLESS STEEL EXTERNAL SHAKEPROOF LOCK WASHER | 2 |
| 23 | 219984 | M6 X 30MM LG POZI-PAN STAINLESS STEEL MACHINE SCREW | 2 |
| 24 | 429131 | TTB 1840 ADDITIONAL WEIGHT | 2 |

TT 1840 220v ~ 240V ~ 115V

DRW - 13476 (A01) 19/03/2013

HANDLE WIRING



BASE WIRING

