

DAILY MAINTENANCE CHART

NTTB6055DMVNo1

NUMATIC TWINTEC BATTERY TTB6055

**AFTER EVERY DAY, ENSURE
THAT YOU COMPLETE THE
FOLLOWING 6 STEPS**



1.



Empty the recovery tank and rinse thoroughly with clean water.

2.



Clean out the debris filter basket located under the seperator hood.

3.



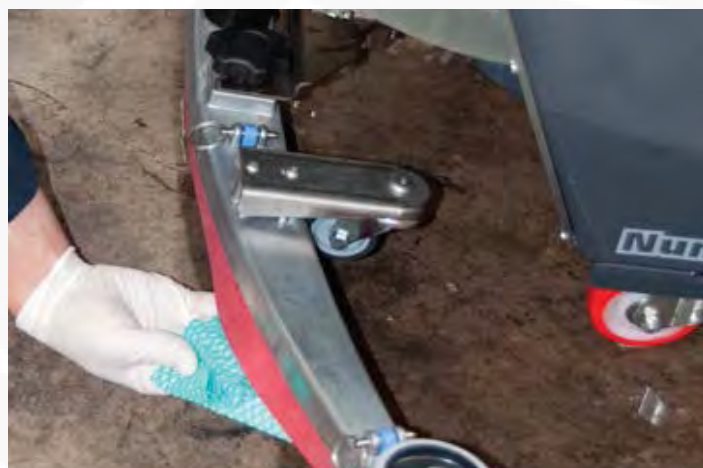
Ensure the seperator seal is clean and undamaged. Replace if necessary.

4.



Clean suction pod filter located in the seperator hood behind the black flap.

5.



IMPORTANT: *Clean underside of squeegee from dirt and debris.*

6.



Plug the machine in for charging.



REPORT ALL DAMAGES AND TECHNICAL ISSUES TO THE SUPERVISOR

WEEKLY MAINTENANCE CHART

NTTB6055WMVNo1

NUMATIC TWINTEC BATTERY TTB6055

**AFTER EVERY WEEK, ENSURE
THAT YOU COMPLETE THE
FOLLOWING 4 STEPS**



1.



Check all hoses for damage, holes and obstructions. Clean and replace as necessary.

2.



Thoroughly clean top separator hood and seal.

3.



IMPORTANT: Remove squeegee and check for wear and damage. Clean thoroughly.

4.



Remove brushes/pad drives and check for wear and damage.



REPORT ALL DAMAGES AND TECHNICAL ISSUES TO THE SUPERVISOR