

DAILY MAINTENANCE CHART

STDMTTE1100VNo1

STOLZENBERG TTE1100

**AFTER EVERY DAY,
ENSURE THAT YOU COMPLETE
THE FOLLOWING 3 STEPS**

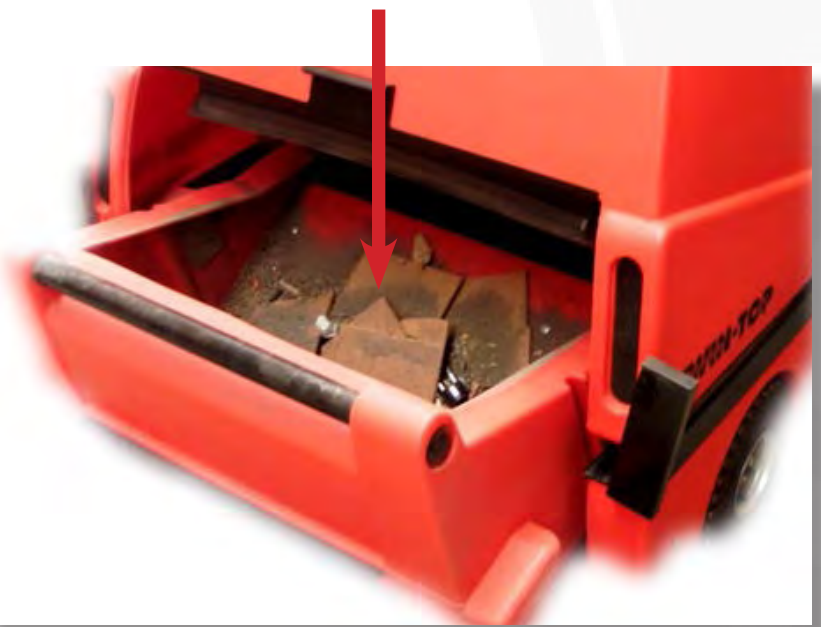


1.



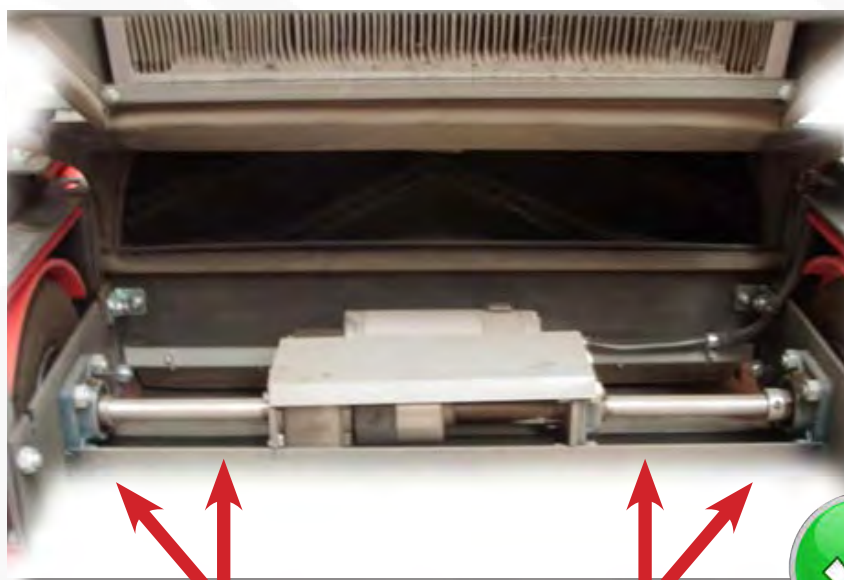
Rumble the dust filter for 15 seconds.

2.



Empty the collection bin.

3.



Check for and remove any trapped debris that may be caught in or around the main brooms.



REPORT ALL DAMAGES AND TECHNICAL ISSUES TO THE SUPERVISOR

FORTNIGHTLY MAINTENANCE CHART

STFMTTE1100VNo1

STOLZENBERG TTE1100

**AFTER EVERY FORTNIGHT,
ENSURE THAT YOU COMPLETE
THE FOLLOWING 4 STEPS**



1.



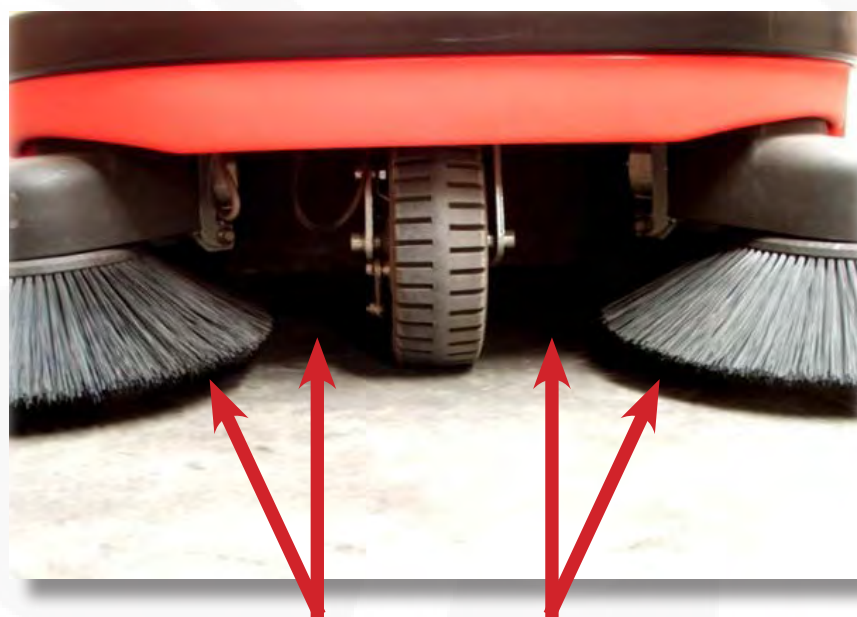
Remove the 2 screws on the left side panel.

2.



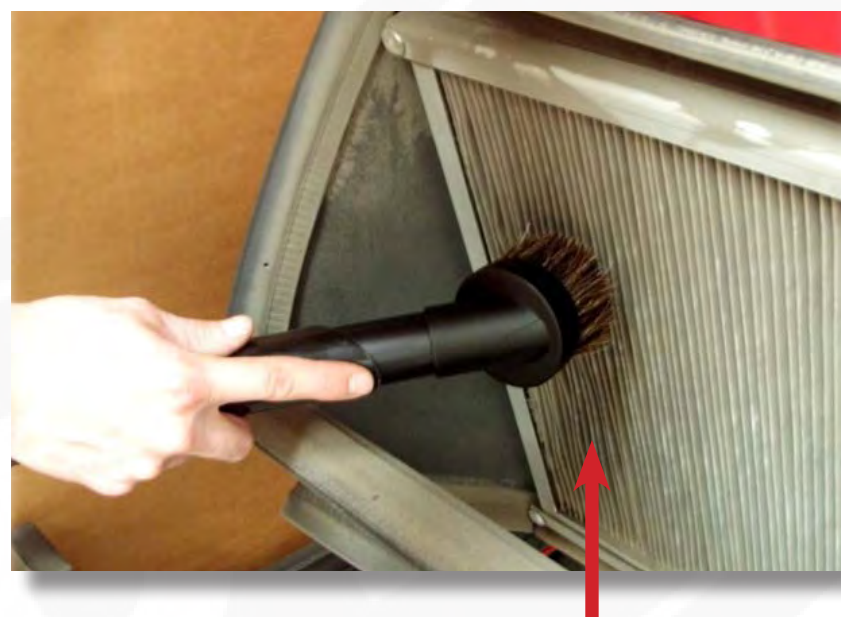
Remove the brooms and inspect for any trapped debris.

3.



Check the front of the machine and the side brooms for any trapped debris.

4.



Vacuum out the filter with a dusting brush.



REPORT ALL DAMAGES AND TECHNICAL ISSUES TO THE SUPERVISOR