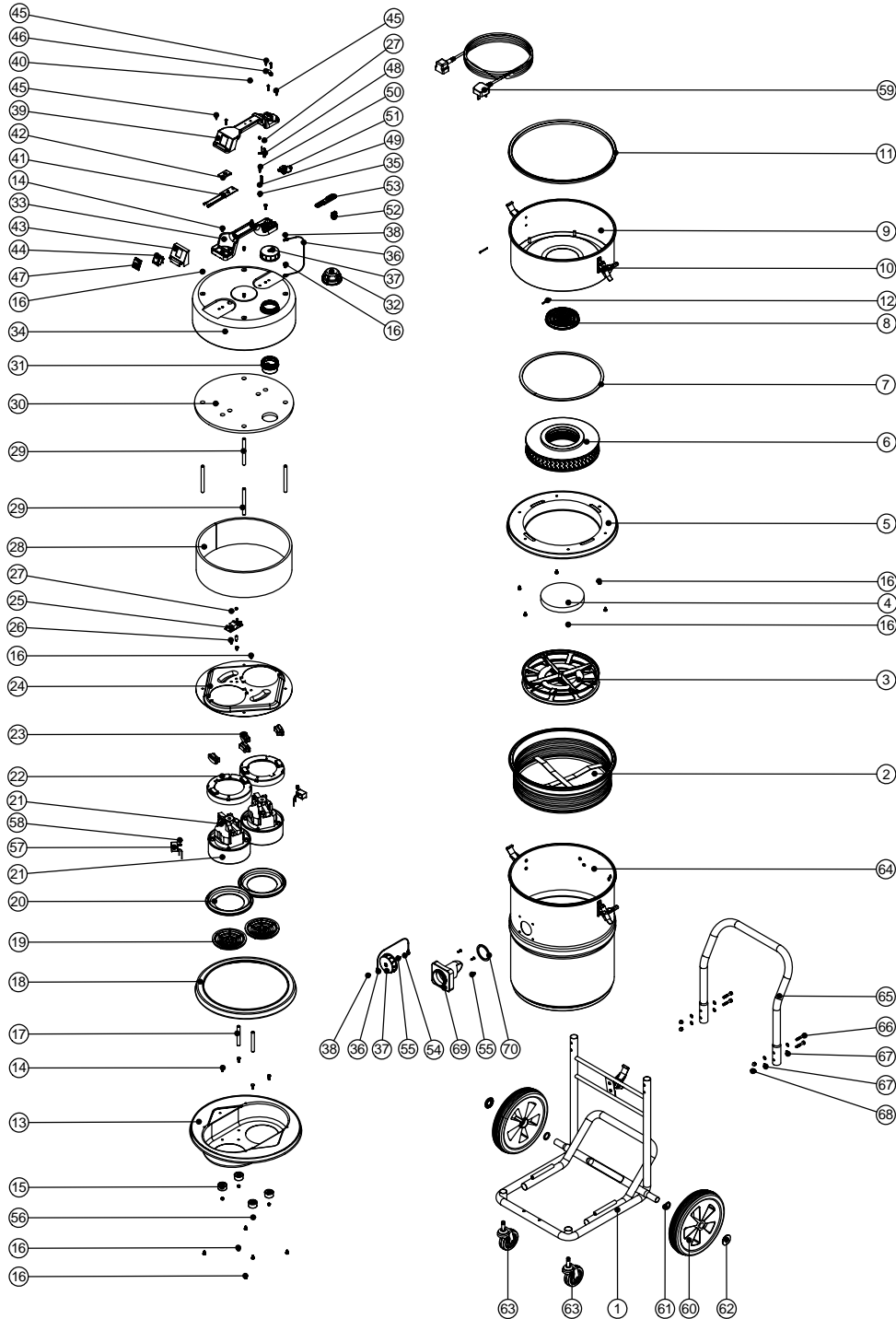


Numatic International Spare Parts

Model No: HZDQ750-2 EXPLODED DRAWING

234375
DRAWING: EXP-0806 ISS:A03
26/06/2008



Numatic International Spare Parts

Model No: HZDQ750-2 EXPLODED DRAWING

POS.	ITEM NO.	DESCRIPTION:	COMMENTS:
1	402136	HEAVY DUTY FIXED CHASSIS (PAINTED BLACK)	
2	207030	WHITE FILTER ASSEMBLY	
3	209600	DOUBLE 12 INCH FILTER GRID (GROOVED CIRCULAR RIB)	
4	206099	RUBBER PAD	
5	401019	YELLOW BOTTOM PLATE	
6	604125	NVM-25B FILTER CARTRIDGE	
7	212052	3MM X 9MM INSEAL	
8	206010	FAN GUARD	
9	401018	YELLOW TOP PLATE	
10	206022	SMALL CLAW TOGGLE	
11	202044	TOP PLATE SEAL	
12	219171	3.2 X 28MM SPLIT COTTER PIN	
13	401371	BLACK DUPLEX BOTTOM MOTOR HOUSING	
14	219045	M5 X 16MM LONG POZI PAN SEMS SCREW	
15	206033	PLASTIC FOOT	
16	219047	M5 X 10MM LONG POZI PAN SEMS SCREW	
17	208001	80MM ALUMINIUM SPACER	
18	202002	BUFFER GASKET	
19	227887	FAN GUARD	
20	202005	MOTOR BOTTOM GASKET	
21	205407	240V 2 STAGE THRO FLOW TAPER FAN MOTOR (DL21104)(MARKED 230V)	240V VERSION
	205406	220V 2 STAGE THRO FLOW TAPER FAN MOTOR (DL21102)(MARKED 230V)	220V VERSION
	205405	120V 2 STAGE THRO FLOW TAPER FAN MOTOR (DL21101)	115V VERSION
22	227886	MOTOR SPACER (LAMB DAF MOTOR)	
23	229549	MOTOR MOUNTING RUBBER	
24	401369	BLACK DUPLEX TOP MOTOR HOUSING	
25	220555	230V DELAY START MODULE	220/240V VERSION
	220556	115V DELAY START MODULE	115V VERSION
26	219414	NYLON PILLAR	
27	219090	M4 X 8MM LONG POZI PAN SEMS SCREW	
28	203003	SIDE FELT	
29	208002	108.5MM LONG ALUMINIUM SPACER	
30	303027	TOP FELT PUNCHED	
31	206005	AIR OUTLET NECK	
32	604151	AIR DIFFUSER FOR BLOWER TYPES	
33	320686	HANDLE BASE MOULDING	
34	401800	BLACK HEAD TOP	
35	220078	BRASS EARTHING SPACER	
36	303037	BLANKING CAP FIXING WIRE	
37	206363	BLANKING CAP	
38	219301	No6 X 3/8 INCH LONG POZI PAN SELF TAP SCREW	
39	320678	HANDLE COVER (DRILLED)	
40	220381	AMBER LENS	
41	220677	230V LOW FLOW INDICATOR DEVICE	220/240V VERSION
	220678	115V LOW FLOW INDICATOR DEVICE	115V VERSION
42	202086	LOW FLOW PCB MOUNTING GASKET	
43	227635	SWITCH MOUNTING BRACKET (1 SWITCH)	
44	220552	RED ROCKER SWITCH	
45	219107	No6 X 5/8 INCH LONG POZI PAN PLASTITE SCREW	
46	227564	PLUG LOCATION CLAMP	
47	206573	SWITCH COVER (PLUG HANDLE)	
48	206562	CONTACT PIN	
49	206563	EARTH CONTACT PIN	
50	219274	M4 X 20MM LONG POZI PAN SCREW	
51	227631	TERMINAL COVER & CLAMP (3 PIN)	
52	227637	CABLE CLIP	
53	227636	STRAIN RELIEF	
54	219003	M5 FORM A STEEL WASHER	
55	219101	No8 X 1/2 INCH LONG POZI PAN PLASTITE SCREW	
56	219076	M5 NYLON INSERT NUT	
57	220682	SUPPRESSOR ASSEMBLY	
58	219858	M5 x 8MM HEX WASHER FACED TAPFIX (DIN7500D)	
59	236010	10.0M X 1.00MM X 3 CORE NUCABLE (UK PLUG)	
	236014	10.0M X 1.00MM X 3 CORE NUCABLE (EURO PLUG)	
	236018	10.0M X 1.00MM X 3 CORE NUCABLE (SWISS PLUG)	
	236022	10.0M X 1.00MM X 3 CORE NUCABLE (SOUTH AFRICAN PLUG)	
	236030	10.0M X 1.00MM X 3 CORE NUCABLE (AUSTRALIAN PLUG)	
	220911	12.5MT X 2.5MM X 3CORE CABLE PLUS 32AMP INDUSTRIAL PLUG	HARDWIRED VERSION
	236124	10.0MT X 1MM X 3 CORE YELLOW CABLE (SOCKET + PLUG) EURO	
60	204028	10 INCH WHEEL	
61	219505	NYLON WASHER	
62	219504	STARLOCK PUSH ON FASTENER	
63	204060	3 INCH CASTOR	
64	400102	HZD 750 DRUM ASSEMBLY	
65	402200	BLACK PLASTIC COATED HANDLE	
66	219064	M6 X 35MM LONG HEX BOLT	
67	219007	M6 FORM B WASHER	
68	219080	M6 DOMENUT	
69	303035	DRILLED DRUM FLANGE	
70	202027	HOSE FLANGE GASKET	

WIRING DIAGRAM

ITEM. No
123208

DRG. No
WD-0229

TITLE 14" HZDQ METAL 3 CORE/DELAY START/LOW FLOW/ONE OVERLOAD LAMB MOTOR

REVISION	CHANGE DETAIL	DRAWN	APPD.	DATE
A02	320320 AND 320322 ADDED	MCF	IL	05:03:09

