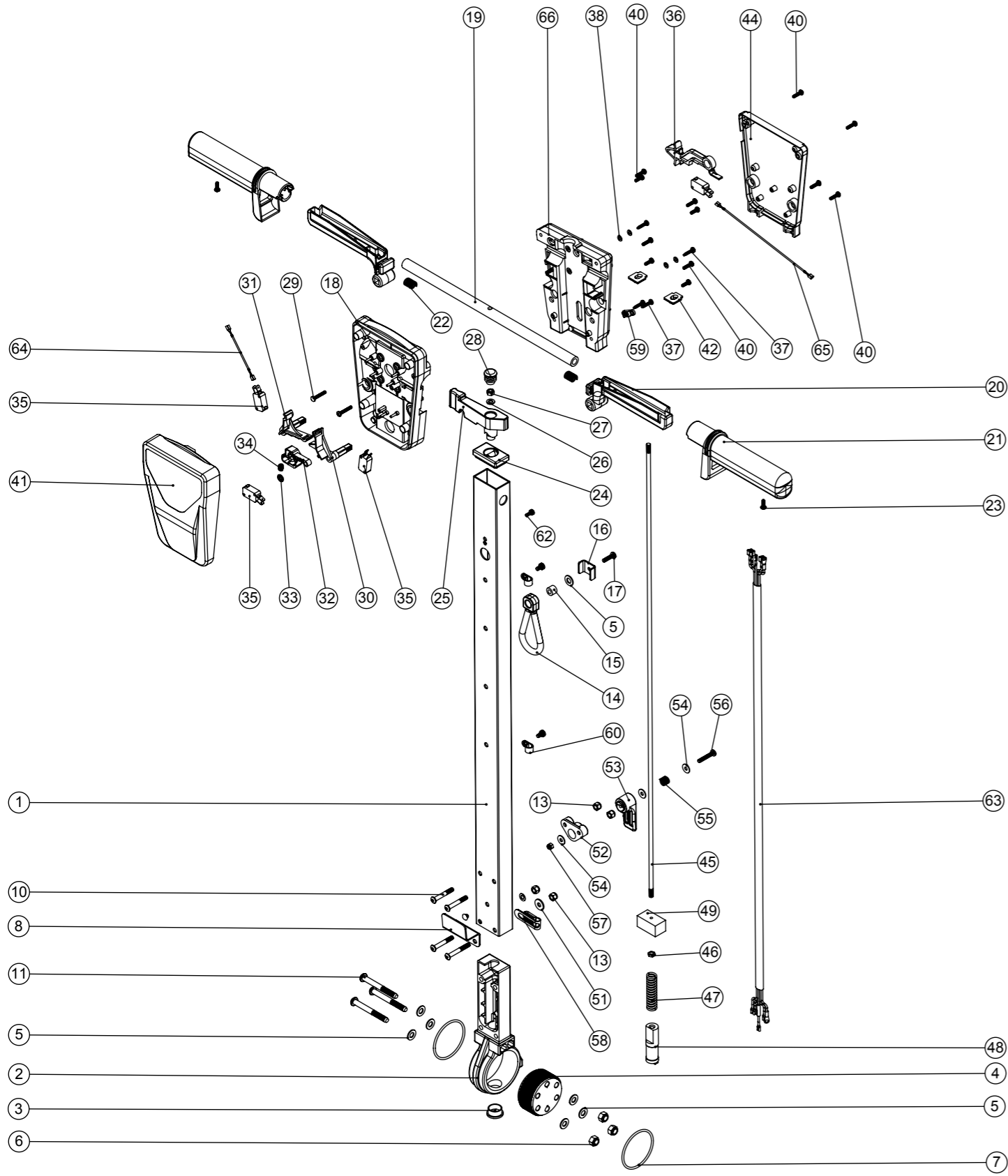


Numatic International Spare Parts

Model No: NR HANDLE ASSEMBLY

NB: FOR WIRING SEE DRAWING: WD-0345

234514
DRAWING:EXP-0943 ISS:A03
01/10/2007



Numatic International Spare Parts

Model No: NR HANDLE ASSEMBLY

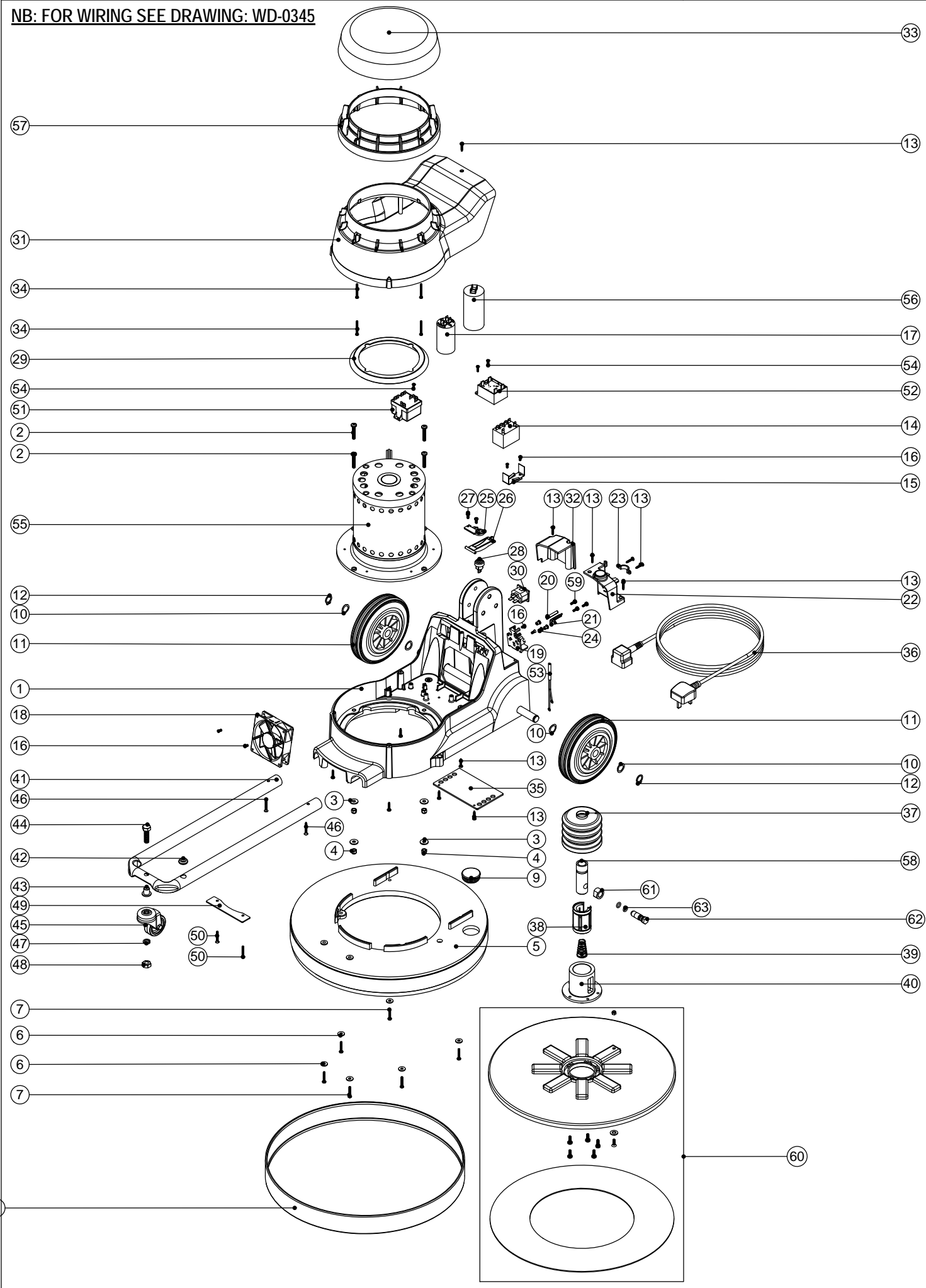
POS:	ITEM NO:	DESCRIPTION:	COMMENTS:
1	429096	LOLINE HANDLE TUBE PAINTED (830)	
2	229081	HANDLE CASTING MACHINED	
3	229099	25MM DIA HOLE PLUG	
4	229482	DUAL SETTING ADJUSTMENT GEAR	
5	219010	M8 FORM A WASHER	
6	219078	M8 NYLON INSERT NUT	
7	219254	O RING 3MM DIA X 60MM I/D	
8	329000	HANDLE BRACKET	
9	219881	M6 X 45MM SOCKET BUTTON HEAD SCREW	
10	219807	M6 X 40MM LONG SOCKET BUTTON HEAD BOLT	
11	219806	M8 X 70MM LONG SOCKET BUTTON HEAD BOLT	
12	229009	BLANKING PLUG	
13	219088	M6 NYLON INSERT NUT	
14	226008	STRESS RELIEF	
15	226006	SPACER (BLACK)	
16	329231	STRESS RELIEF BRACKET	
17	219054	M5 X 20MM LONG POZI PAN SCREW	
18	227576	FRONT INNER HALF MOULDING	
19	338269	CROSS TUBE	
20	227581	TRIGGER MOULDING	
21	227580	HAND GRIP MOULDING	
22	219803	TRIGGER COMPRESSION SPRING	
23	219270	No8 X 1/2 INCH LONG POZI PAN SELF TAP SCREW	
24	227582	HANDLE PLUG MOULDING	
25	227583	ADJUSTMENT LEVER MOULDING	
26	219493	M6 NYLON WASHER	
27	219642	M6 STAINLESS STEEL NYLON INSERT NUT	
28	20638V	CSP-302 BLACK TUBE END STOP	
29	219811	NO8 X 1 INCH LONG POZI-PAN SELF TAP SCREW	
30	227585	LEFT HAND SWITCH OPERATING LEVER MOULDING	
31	227586	RIGHT HAND SWITCH OPERATING LEVER MOULDING	
32	227587	CENTRE SWITCH OPERATING LEVER MOULDING	
33	219805	4MM SPIREFIX	
34	219804	SWITCH COMPRESSION SPRING	
35	229483	SNAP ACTION SWITCH	
36	227584	INTERLOCK LEVER MOULDING	
37	219107	No6 X 5/8 INCH LONG POZI PAN PLASTITE SCREW	
38	219206	M4 FORM A WASHER	
39	219101	No8 X 1/2 INCH LONG POZI PAN PLASTITE SCREW	
40	219105	No8 X 5/8 INCH LONG POZI PAN PLASTITE SCREW	
41	318959	PRINTED FRONT COVER MOULDING	
42	329539	MODIFIED BLANKING PLATE	
43	227666	BLANKING PLUG	
44	318968	PRINTED REAR COVER MOULDING	
45	229484	840MM HANDLE LOCKING ROD	
46	219099	M6 HALF NUT	
47	229138	SPRING	
48	229073	GEAR LOCKING PIN	
49	229030	ANTI VIBRATION PAD	
50	219007	M6 FORM B WASHER	
51	219008	M6 FORM G WASHER	
52	227806	CABLE RELEASE BASE MOULDING	
53	227807	CABLE RELEASE TOP MOULDING	
54	219644	M5 FORM G STAINLESS STEEL WASHER	
55	206599	SPRING (REF:C5514370)	
56	219720	M5 X 30MM LONG STAINLESS STEEL POZI PAN SCREW	
57	219076	M5 NYLON INSERT NUT	
58	229139	P-CLIP	
59	229669	LOLINE HANDLE CABLE CLAMP	
60	219393	P CLIP	
61	219047	M5 X 10MM LONG POZI PAN SEMS SCREW	
62	219471	M4 X 12MM LONG POZI PAN SEMS SCREW	
63	230134	NR 5 CORE LOOM ASSEMBLY (UK/EURO)	
64	321247	60MM LONG BLUE LINK WIRE	
65	321248	190MM LONG BLUE LINK WIRE	
66	227577	REAR INNER HALF MOULDING	

Numatic International Spare Parts

Model No: NRU 1500 BASE ASSEMBLY EXPLODED DRAWING (EXP-0921)

234490
DRAWING: EXP-0921 ISS:A14
24/05/2010

NB: FOR WIRING SEE DRAWING: WD-0345



Numatic International Spare Parts

Model No: NRU 1500 BASE ASSEMBLY EXPLODED DRAWING (EXP-0921)

POS:	ITEM NO:	DESCRIPTION:	COMMENTS:
1	304211	BASE MOULDING MODIFIED & PRINTED	
2	219268	M6 X 35MM LONG POZI PAN SCREW	
3	219008	M6 FORM G WASHER	
4	219088	M6 NYLON INSERT NUT	
5	329369	MODIFIED GREY SANDING DECK	
6	219005	M5 FORM G WASHER	
7	219369	No8 X 1 INCH LONG POZI PAN STAINLESS STEEL PLASTITE SCREW	
8	206478	GREY MEDIUM BUFFER RING	
9	229400	BLACK END STOP	
10	219219	21.5MM X 16.3MM WAVE WASHER	
11	229049	160MM DIA WHEEL GREY TYRE BLACK HUB	
12	229051	EXTERNAL CIRCLIP	
13	219914	NO6 X 5/8 INCH LONG POZI-PAN PLASTITE STAINLESS STEEL SCREW	
14	206575	240V / 25A RELAY	
15	206500	RELAY BRACKET	
16	219651	M4 X 10MM LONG POZI PAN THREAD CUTTING SCREW	
17	220876	20 MFD MOTOR RUN CAPACITOR (450V)	
18	205072	PROCESSED 12V DC BRUSHLESS FAN	
19	216288	TERMINAL BLOCK	
20	206562	CONTACT PIN	
21	206563	EARTH CONTACT PIN	
22	206865	16A INPUT COVER C/W WINDOW PLUG	
23	216290	CABLE CLAMP	
24	219009	M4 BRASS TAPPEX INSERT	
25	216293	LEVER PLATE	
26	216292	CUT OUT LEVER	
27	219677	No4 X 10MM LONG POZI PAN PLASTITE SCREW	
28	229454	HANDLE SWITCH	
29	227556	TOP MOTOR GASKET	
30	220964	APPLIANCE OUTPUT SOCKET	
31	229441	FLOOR MACHINE MIDDLE SECTION MOULDING	
32	216291	OUTPUT COVER	
33	328112	NU SPEED TOP SECTION MOULDING PRINTED	
34	219848	NO6 X 1 3/8 INCH LONG POZI PAN SCREW	
35	329228	GAURD PLATE	
36	236072	MAINS CABLE (15.0 METERS / 1.5MM / 3 CORE CABLE / SOCKET + UK PLUG)	
	236136	MAINS CABLE (15.0 METERS / 1.5MM / 3 CORE YELLOW CABLE / SOCKET + EURO PLUG)	
	236087	MAINS CABLE (15.0 METERS / 1.5MM / 3 CORE CABLE / SOCKET + AUSTRALIAN PLUG)	
	236078	MAINS CABLE (15.0 METERS / 1.5MM / 3 CORE CABLE / SOCKET + SWISS PLUG)	
	236081	MAINS CABLE (15.0 METERS / 1.5MM / 3 CORE CABLE / SOCKET + SOUTH AFRICAN PLUG)	
37	229253	GAITER	
38	229044	LINEAR BEARING 25MM X 40MM X 58MM	
39	229175	CONICAL SPRING	
40	229472	DRIVE SLEEVE (NS)	
41	304208	FRONT CASTOR TUBE (NS)	
42	219445	BLACK PVC GROMMET	
43	229100	CASTOR SPACER	
44	219341	M10 X 35MM LONG HEX BOLT	
45	204018	50MM CASTOR/GREY RUBBER TYRE	
46	219826	NO8 X 1 1/4 INCH LONG POZI DRIVE COUNTERSUNK HEAD SCREW	
47	219349	M10 SINGLE COIL WASHER	
48	219074	M10 FULL NUT	
49	329423	CASTOR TUBE LOCK PLATE	
50	219342	No8 X 1 INCH LONG COUNTERSUNK POZI PAN PLASTITE SCREW	
51	206823	230V SINGLE SPEED VOLTAGE RELAY	
52	206753	UNIVERSAL POWER SUPPLY	
53	321193	AC LED WITH TERMINALS	
54	219318	No6 X 1/2 INCH LONG POZI PAN PLASTITE SCREW	
55	205218	COMBINED INDUCTION MOTOR 4POLE 220-240V 50Hz (NO SEAL)	
56	208265	MOTOR START CAPACITOR 100 MFD C/W RESISTOR & M8 STUD	
57	229486	GREY TALL MOTOR INSERT MOULDING	
58	208218	M12 DRIVE SHAFT (NRU/LEMAC)	
59	219471	M4 X 12MM LONG POZI PAN SEMS SCREW	
60	217129	PAD HOLDER ASSY (SPARE PART)	
61	208276	DRIVE PIN SLEEVE (NRU / LEMAC)	
62	229174	M12 DRIVE PIN	
63	219512	O RING 8.0MM ID X 2.5MM WALL	

WIRING DIAGRAM

COMP. No
123319

DRG. No
WD-0345

NR/NRU/NRS/NRL 230V (VOLTAGE RELAY) FLOOR MACHINE

ISSUE	REVISION	DRAWN	APPD.	DATE
A05	THERMISTER REMOVED FROM DRAWING	JSW	MP	15:04:10

