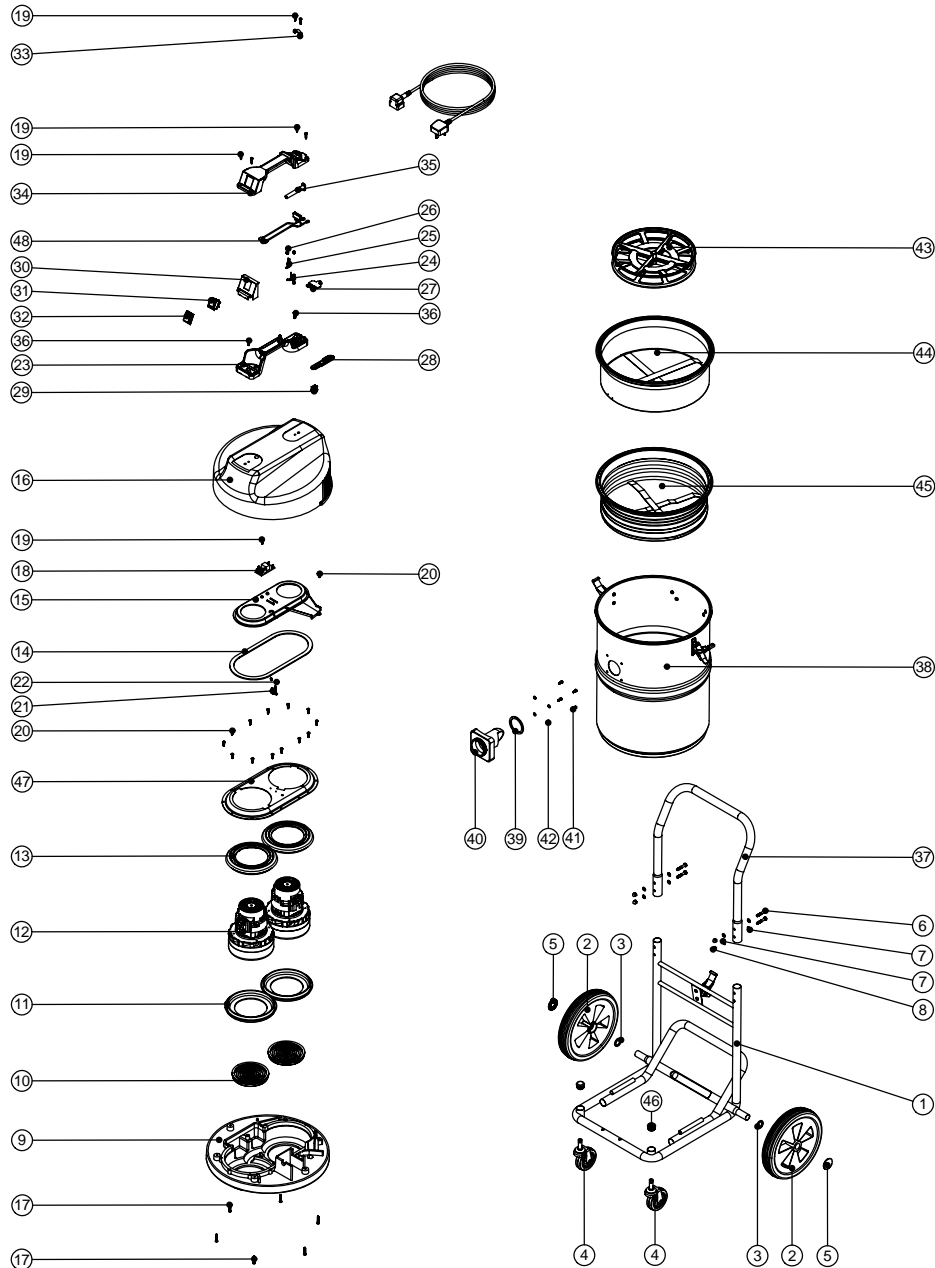


# Numatic International Spare Parts

## Model No: NTD750-2 EXPLODED DRAWING

234365  
DRAWING: EXP-0796 ISS:A03  
30/06/2008



# Numatic International Spare Parts

## Model No: NTD750-2 EXPLODED DRAWING

| POS: | ITEM NO: | DESCRIPTION:  | COMMENTS:          |
|------|----------|---|--------------------|
| 1    | 402136   | HEAVY DUTY FIXED CHASSIS (PAINTED BLACK)                      |                    |
| 2    | 204028   | 10 INCH WHEEL   |                    |
| 3    | 219505   | NYLON WASHER  |                    |
| 4    | 204060   | 3 INCH CASTOR   |                    |
| 5    | 219504   | STARLOCK PUSH ON FASTENER                                     |                    |
| 6    | 219064   | M6 X 35MM LONG HEX BOLT                                       |                    |
| 7    | 219007   | M6 FORM B WASHER  |                    |
| 8    | 219080   | M6 DOMENUT  |                    |
| 9    | 301048   | PROCESSED BOTTOM MOTOR HOUSING                                |                    |
| 10   | 206010   | FAN GUARD   |                    |
| 11   | 202005   | MOTOR BOTTOM GASKET   |                    |
| 12   | 205411   | 240V 2 STAGE D.I BYPASS ACUSTEK MOTOR (BL21104)(MARKED 230V)  | 240V VERSION       |
|      | 205410   | 220V 2 STAGE D.I BYPASS ACUSTEK MOTOR (BL21102) (MARKED 230V) | 220V VERSION       |
|      | 205409   | 120V 2 STAGE D.I BYPASS ACUSTEK MOTOR (BL21101)               | 115V VERSION       |
| 13   | 202003   | TOP MOTOR GASKET  |                    |
| 14   | 202012   | GASKET  |                    |
| 15   | 225154   | AIR SEPARATOR DUPLEX  |                    |
| 16   | 227043   | COVER MOULDING  |                    |
| 17   | 219369   | No8 X 1 INCH LONG POZI PAN STAINLESS STEEL PLASTITE SCREW     |                    |
| 18   | 220555   | 230V DELAY START MODULE                                       | 220/240V VERSION   |
|      | 220556   | 115V DELAY START MODULE                                       | 115V VERSION       |
| 19   | 219107   | No6 X 5/8 INCH LONG POZI PAN PLASTITE SCREW                   |                    |
| 20   | 219370   | No8 X 5/8 INCH LONG PLASTITE STAINLESS STEEL SCREW            |                    |
| 21   | 220532   | THERMOSTAT  |                    |
| 22   | 219491   | M5 X 3MM LONG POZI PAN TAPTITE SCREW                          |                    |
| 23   | 320835   | HANDLE BASE MOULDING + INSERTS                                |                    |
| 24   | 206562   | CONTACT PIN   |                    |
| 25   | 206563   | EARTH CONTACT PIN   |                    |
| 26   | 219090   | M4 X 8MM LONG POZI PAN SEMS SCREW                             |                    |
| 27   | 227631   | TERMINAL COVER & CLAMP (3 PIN)                                |                    |
| 28   | 227636   | STRAIN RELIEF   |                    |
| 29   | 227637   | CABLE CLIP  |                    |
| 30   | 227635   | SWITCH MOUNTING BRACKET (1 SWITCH)                            |                    |
| 31   | 220552   | RED ROCKER SWITCH   |                    |
| 32   | 206573   | SWITCH COVER (PLUG HANDLE)                                    |                    |
| 33   | 227564   | PLUG LOCATION CLAMP   |                    |
| 34   | 227623   | HANDLE COVER (10 AMP / 3 PIN / 1 SWITCH)                      |                    |
|      | 227627   | HANDLE COVER HARD WIRE 1 SWITCH                               | HARD WIRED VERSION |
| 35   | 220923   | STRESS RELIEF   |                    |
| 36   | 219546   | M5 X 20MM LONG POZI PAN SEMS SCREW                            |                    |
| 37   | 402200   | BLACK PLASTIC COATED HANDLE                                   |                    |
| 38   | 400143   | 750 DRUM PAINT SILVER   |                    |
| 39   | 202027   | HOSE FLANGE GASKET  |                    |
| 40   | 206024   | DRY HOSE CONNECTOR FLANGE                                     |                    |
| 41   | 219101   | No8 X 1/2 INCH LONG POZI PAN PLASTITE SCREW                   |                    |
| 42   | 219003   | M5 FORM A STEEL WASHER  |                    |
| 43   | 209600   | DOUBLE 12 INCH FILTER GRID (GROOVED CIRCULAR RIB)             |                    |
| 44   | 207032   | RED FILTER + MOULDING GASKET                                  |                    |
| 45   | 207166   | WHITE FILTER + RING   |                    |
| 46   | 20637V   | 25.4MM TUBE END STOP  |                    |
| 47   | 325526   | TOP MOTOR HOUSING (DUPLEX)                                    |                    |
| 48   | 220142   | SUPPRESSOR ASSEMBLY   | 240V VERSION       |
|      | 230234   | SUPPRESSOR ASSEMBLY   | 220V VERSION       |
|      | 220558   | SUPPRESSOR ASSEMBLY   | 115V VERSION       |
| 49   | 236009   | 10.0M X 1.00MM X 2 CORE NUCABLE (UK PLUG)                     |                    |
|      | 236132   | 10.0MT X 1MM X 2 CORE YELLOW CABLE (SOCKET + PLUG) EURO       |                    |
|      | 236044   | 10.0MT X 1.0MM X 2 CORE BLACK CABLE PLUS AUSTRALIAN PLUG      |                    |

# WIRING DIAGRAM

DRG. No  
**WD-0255**

PART. No  
**123234**

## 14" WVD (DUPLIX) LAMB 230v

|            |  |            |           |                 |
|------------|--|------------|-----------|-----------------|
| <b>A03</b> | 220558 WAS 220142. 320287 WAS 220336.<br>320044 WAS 321090 | <b>MCF</b> | <b>IL</b> | <b>17:03:09</b> |
| ISSUE      | REVISION   | DRAWN      | APPD.     | DATE            |

