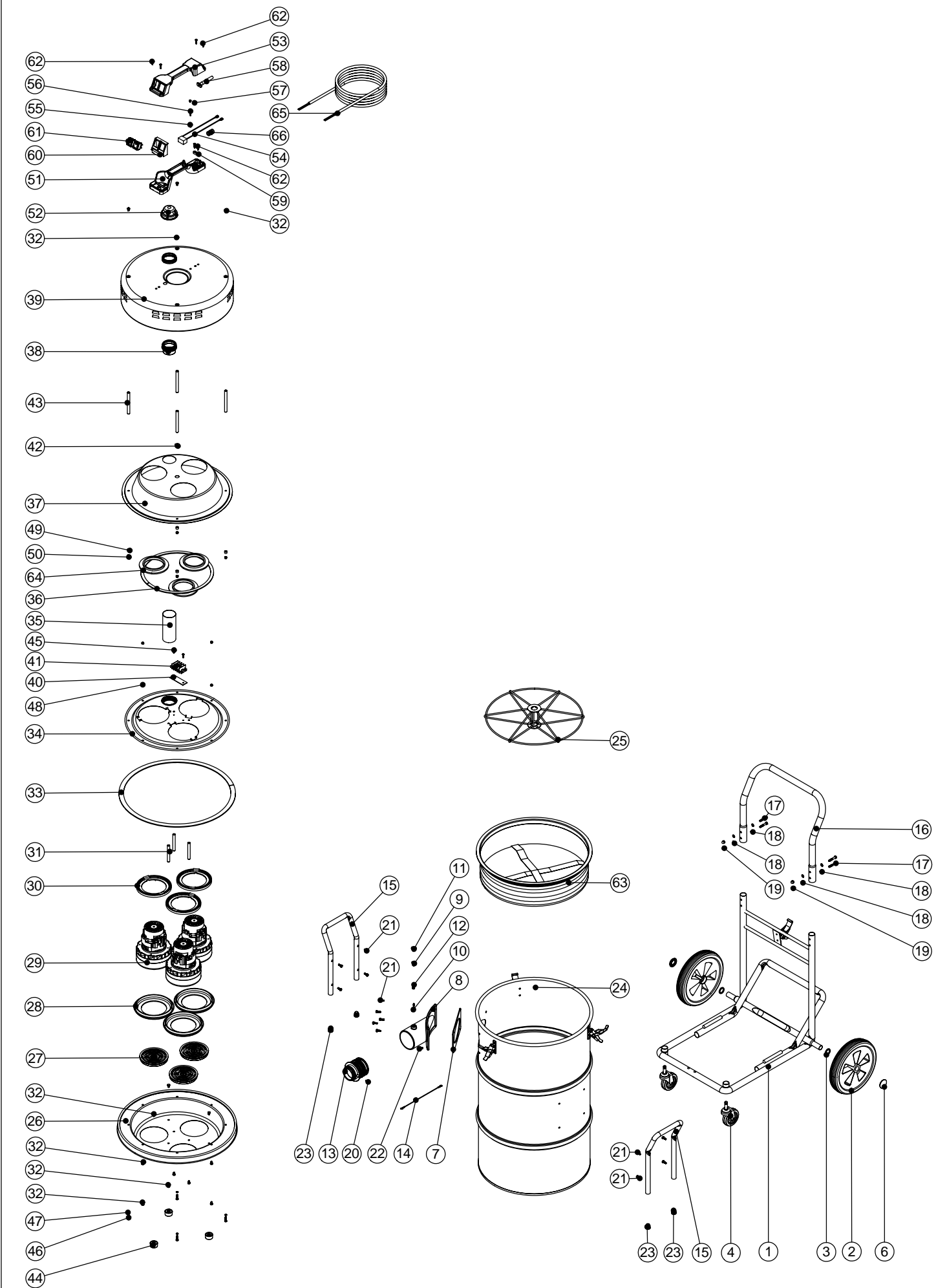


# Numatic International Spare Parts

## Model No: NTT2003-2 EXPLODED DRAWING

234369  
DRAWING: EXP-0800 ISS:A02  
14/08/2006



# Numatic International Spare Parts

## Model No: NTT2003-2 EXPLODED DRAWING

POS:	ITEM NO:	DESCRIPTION:	COMMENTS:
1	402016	BLACK HEAVY DUTY CHASSIS ASSEMBLY	
2	204028	10 INCH WHEEL	
3	219505	NYLON WASHER	
4	204060	3 INCH CASTOR	
5	206028	TOGGLE	
6	219504	STARLOCK PUSH ON FASTENER	
7	202050	1/8 INCH A/B EXPANDED NEOPRENE GASKET	
8	206171	3 INCH CYCLONIC INLET CONNECTOR MACHINED	
9	206169	DRUM LOCKING NUT	
10	206168	DRUM LOCKING PIN	
11	206167	DRUM KNOB	
12	219353	COMPRESSION SPRING	
13	206188	THREAD CONNECTOR MOULDING	
14	303121	BLANKING CAP FIX WIRE	
15	402011	BLACK HANDLE	
16	402202	BLACK PLASTIC COATED HANDLE	
17	219064	M6 X 35MM LONG HEX BOLT	
18	219007	M6 FORM B WASHER	
19	219080	M6 DOMENUT	
20	219101	No8 X 1/2 INCH LONG POZI PAN PLASTITE SCREW	
21	219045	M5 X 16MM LONG POZI PAN SEMS SCREW	
22	219050	M5 X 16MM LONG POZI PAN SCREW	
23	20638V	CSP-302 BLACK TUBE END STOP	
24	300190	CONNECTOR DRUM ASSEMBLY	
25	209045	FILTER GRID	
26	401036	BLACK BOTTOM MOTOR HOUSING	
27	206010	FAN GUARD	
28	202005	MOTOR BOTTOM GASKET	
29	205411	240V 2 STAGE D.I BYPASS ACUSTEK MOTOR (BL21104)(MARKED 230V)	
	205409	120V 2 STAGE D.I BYPASS ACUSTEK MOTOR (BL21101)	
30	227925	TOP MOTOR GASKET	
31	208001	80MM ALUMINIUM SPACER	
32	219047	M5 X 10MM LONG POZI PAN SEMS SCREW	
33	212024	INSEAL	
34	401414	BLACK TRIPLEX TOP MOTOR HOUSING	
35	201059	AIR OUTLET TUBE 125MM LONG	
36	212090	1250MM LONG X 12MM WIDE X 3MM HIGH INSEAL	
37	401084	BLACK TRIPLEX AIR SEPARATOR	
38	206005	AIR OUTLET NECK	
39	401731	BLACK HEAD TOP	
40	220055	INSULATING PLATE	
41	220030	TERMINAL BLOCK	
42	220017	HEYCO SNAP BUSHING	
43	208005	105MM LONG ALUMINIUM SPACER	
44	206033	PLASTIC FOOT	
45	299021	No8 X 3/4 INCH LONG SELF TAP POZI PAN SCREW	
46	219054	M5 X 20MM LONG POZI PAN SCREW	
47	219016	M5 SHAKEPROOF WASHER	
48	219076	M5 NYLON INSERT NUT	
49	299011	8 MM LONG ALUMINIUM SPACER	
50	219072	M5 FULL NUT	
51	320686	HANDLE BASE MOULDING	
52	604151	AIR DIFFUSER FOR BLOWER TYPES	
53	227626	HANDLE COVER HARD WIRE (2 SWITCH)	
54	230433	SUPPRESSOR ASSEMBLY (9.4nF)	
55	220078	BRASS EARTHING SPACER	
56	219274	M4 X 20MM LONG POZI PAN SCREW	
57	219090	M4 X 8MM LONG POZI PAN SEMS SCREW	
58	220541	CABLE STRESS RELIEF	
59	227008	BLACK CABLE CLAMP	240V VERSION
	220131	BLACK CABLE CLAMP	115V VERSION
60	227629	SWITCH MOUNTING BRACKET	
61	220552	RED ROCKER SWITCH	
62	219107	No6 X 5/8 INCH LONG POZI PAN PLASTITE SCREW	
63	207162	ORANGE FILTER + GASKET	
64	202008	MOTOR CAP GASKET	
65	220094	MAINS CABLE (3 WIRE, NO PLUG)	240V VERSION
	220911	MAINS CABLE (3 WIRE + INDUSTRIAL PLUG)	115V VERSION
66	230097	AXIAL FERRITE BEAD	

# WIRING DIAGRAM

COMP. No

DRG. No

**WD-0299**

## 18" METAL TRIPLEX BYPASS 3 CORE 230V LAMB REPLACEMENT MOTORS

ISSUE  
**A01**

REVISION  
**NEW DRAWING**

DRAWN  
**MCF**

APPD.  
**AJB**

DATE  
**12/4/05**

