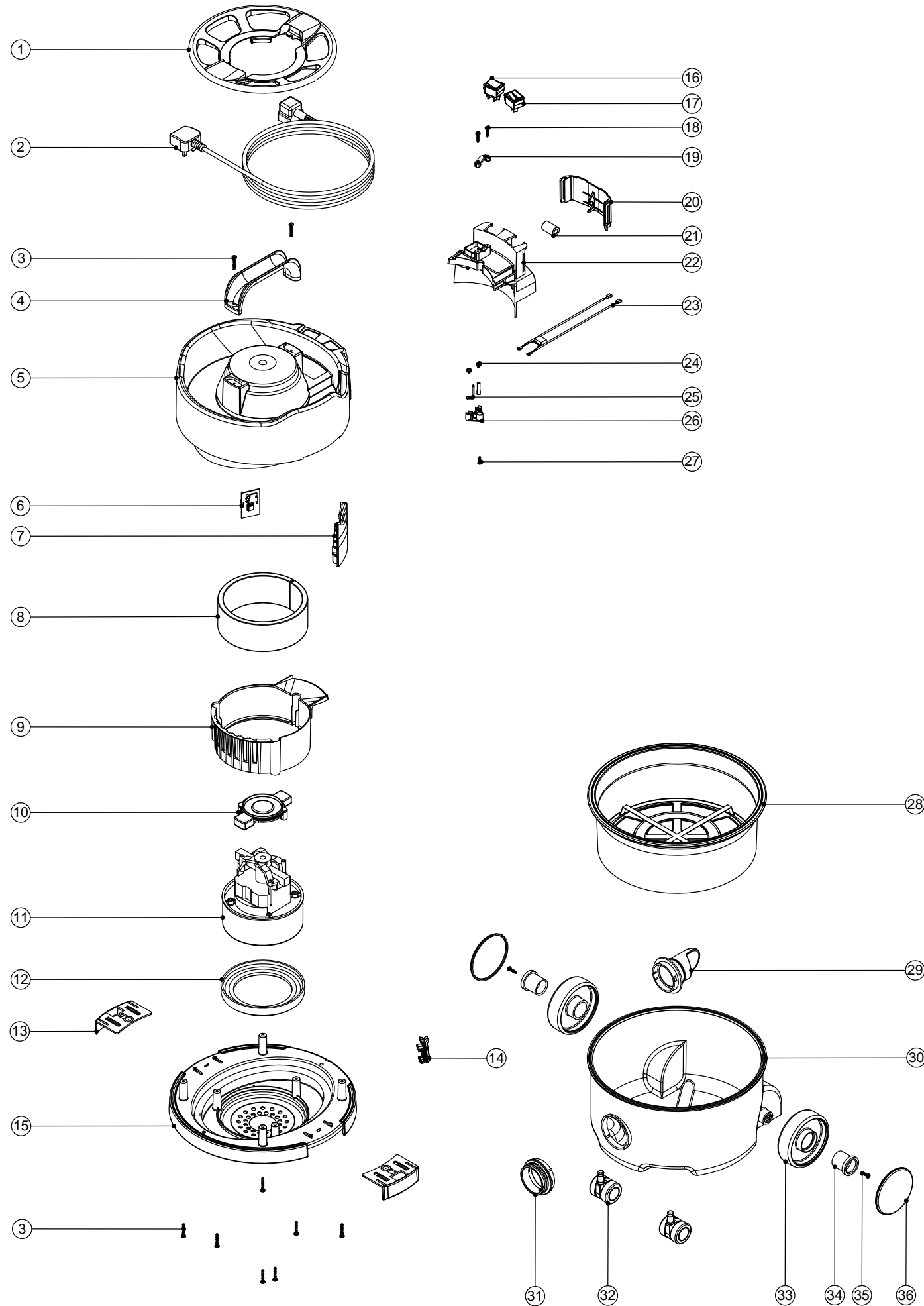


Numatic International Spare Parts

Model No: PSP180A / 200A / 370A MID BLUE EXPLODED DRAWING

234771
DRAWING: DRW-6776 ISS:A01
11/10/2010

NB: FOR WIRING SEE DRAWING: DRW-4550

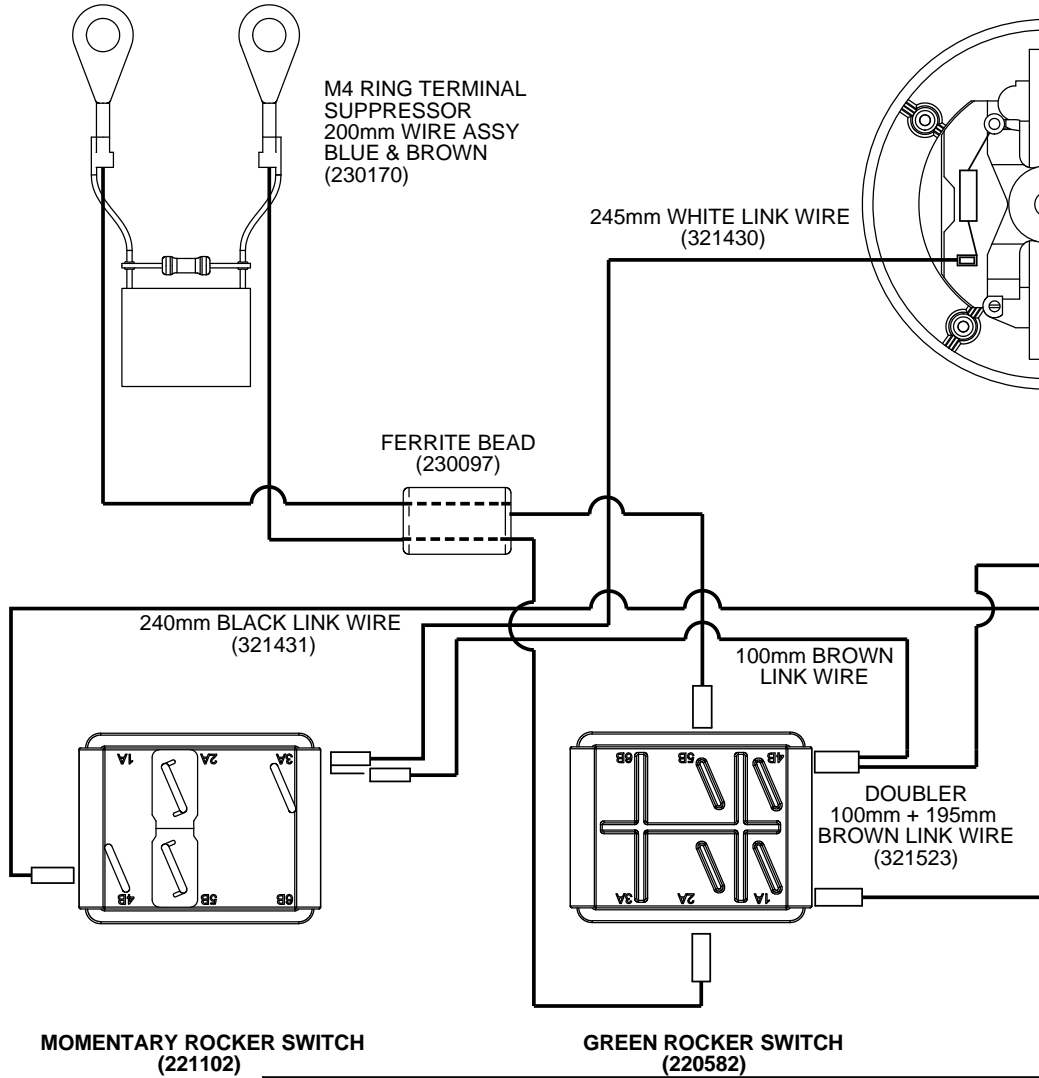
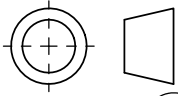


Numatic International Spare Parts

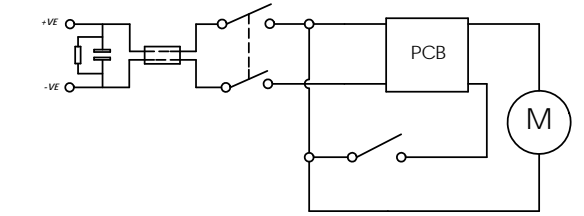
Model No: PSP180A / 200A / 370A MID BLUE EXPLODED DRAWING

POS	ITEM NO:	DESCRIPTION	COMMENTS
1	237098	NSP / PSP CABLE TIDY (MID BLUE)	
2	236009	10.0M X 1.00MM X 2 CORE CABLE (SOCKET + PLUG) UK	
	236013	10.0M X 1.00MM X 2 CORE CABLE (SOCKET + PLUG) EURO	
	236017	10.0M X 1.00MM X 2 CORE CABLE (SOCKET + PLUG) SWISS	
	236021	10.0M X 1.00MM X 2 CORE CABLE (SOCKET + PLUG) SOUTH AFRICA	
	236025	10.0M X 18AWG X 2 CORE YELLOW CABLE (SOCKET + PLUG) CSA	CSA MACHINES
	236029	10.0M X 1.00MM X 2 CORE CABLE (SOCKET + PLUG) AUSTRALIAN	
3	219104	No8 X 1 INCH LONG POZI PAN PLASTITE SCREW	
4	206451	HANDLE	
5	325921	NSP / PSP TOP MOTOR HOUSING (MID BLUE) PRINTED BLACK NUMATIC + AUTOSAVE GREEN FLOWER LOGO	
6	208100	AUTOSAVE 2 SPEED CONTROL PCB	
7	237079	CABLE EXIT NPV/NHV	
8	203020	POD SIDE FELT	
9	229621	AIR GUIDE	
10	229614	MOTOR PLATE BI -MATERIAL	
11	205403	240V 2 STAGE THRO FLOW TAPER FAN MOTOR (DL21102T) TCO (MARKED 230V)	
	205402	220V 2 STAGE THRO FLOW TAPER FAN MOTOR (DL21102T) TCO (MARKED 230V)	
	205401	120V 2 STAGE THRO FLOW TAPER FAN MOTOR (DL21101) TCO	
12	227882	BOTTOM MOTOR GASKET	
13	229715	TOGGLE (TWIN SHOT)	
14	229426	HENRY CLIPHOLDER	
15	229618	BOTTOM MOTOR HOUSING (TWIN-SHOT)	
16	220243	BLACK/GREEN ROCKER SWITCH	
17	221102	RED MOMENTARY ROCKER SWITCH (BLACK BODY / RED ILLUMINATION WINDOW)	
18	219107	No6 X 5/8 INCH LONG POZI PAN PLASTITE SCREW	
19	227564	PLUG LOCATION CLAMP	
20	229623	SWITCH COVER	
	229738	SWITCH COVER V2	CSA MACHINES
21	230097	AXIAL FERRITE BEAD	
22	237076	SWITCH HOUSING PLUGGED	
	237172	SWITCH HOUSING PLUGGED V2	CSA MACHINES
23	230170	SUPPRESSOR WIRE ASSY NPV/NHV	
24	219090	M4 X 8MM LONG POZI PAN SEMS SCREW	
25	206562	CONTACT PIN	
26	325912	NPV / NHV TERMINAL BLOCK PLUS INSERTS	
27	219318	No6 X 1/2 INCH LONG POZI PAN PLASTITE SCREW	
28	207109	12 INCH FILTER (DOUBLE BOTTOM) 160GRM SMS	
29	227363	BAG CONNECTOR	180 MACHINES
	229768	BAG CONNECTOR (2006)	200 MACHINES
30	227575	180 DRUM - MID-BLUE	
	237126	180 DRUM PLUS FACE - MID BLUE	
	227374	NNV/NRV 200 (MID BLUE) MOULDED DRUM	
	229742	NNV/NRV 200 (MID BLUE) MOULDED DRUM PLUS FACE	
	227457	370 DRUM (MID BLUE) LOOSE NECK	
	237127	370 DRUM (MID BLUE) LOOSE NECK PLUS FACE	
31	237108	MID BLUE THREADED NECK	180 / 370 MACHINES
32	204000	40MM PU-TYRED BLACK TWIN WHEEL CASTOR	
33	227640	2 SHOT WHEEL ASSEMBLY	
34	227868	WHEEL HUB FOR 2 SHOT WHEEL	
35	219105	No8 X 5/8 INCH LONG POZI PAN PLASTITE SCREW	
36	229777	MID BLUE TRIM	

THIRD ANGLE PROJECTION



SCHEMATIC DIAGRAM



MOMENTARY ROCKER SWITCH
(221102)

GREEN ROCKER SWITCH
(220582)

*Tri Rated cable must be marked with BS6231 UL and CSA on outer Sheath.
Any Component that will be touched by the operator must be PAH tested.
All components must be ROHS compliant.*

Numatic INTERNATIONAL LTD MILLFIELD ROAD, CHARD, SOMERSET ENGLAND
TA20 2GB

THIS DRAWING IS COPYRIGHT AND IS THE PROPERTY OF NUMATIC INTERNATIONAL LTD. AND MUST NOT BE USED WITHOUT THEIR KNOWLEDGE NOR COMMUNICATED TO ANY PERSON OR COMPANY.

THE EXAMPLE SHOWN DETAILS THE METHOD USED FOR IDENTIFYING CRITICAL (INSPECTION) DIMENSIONS WHERE APPLICABLE

20.0		←
TOLERANCES:-	LINEAR:	0 DECIMAL PLACE = +/- 1.0mm
	1 DECIMAL PLACE = +/- 0.25mm	ANGULAR:- +/- 0.5 DEGREE
	2 DECIMAL PLACES = +/- 0.05mm	

TITLE:-
NSP/PSP AUTOSAVE WIRING DIAGRAM

DIMNs IN MILLIMETERS	MATERIAL:-	ITEM No(s):-
	-	123352

FINISH:-	DRG No:-
-	DRW-4550

A02	SCHEMATIC DIAGRAM ADDED	marcusa	IanL	10/02/2010
REVISION:	CHANGE DETAIL:	DRAWN:	APPD:	DATE: