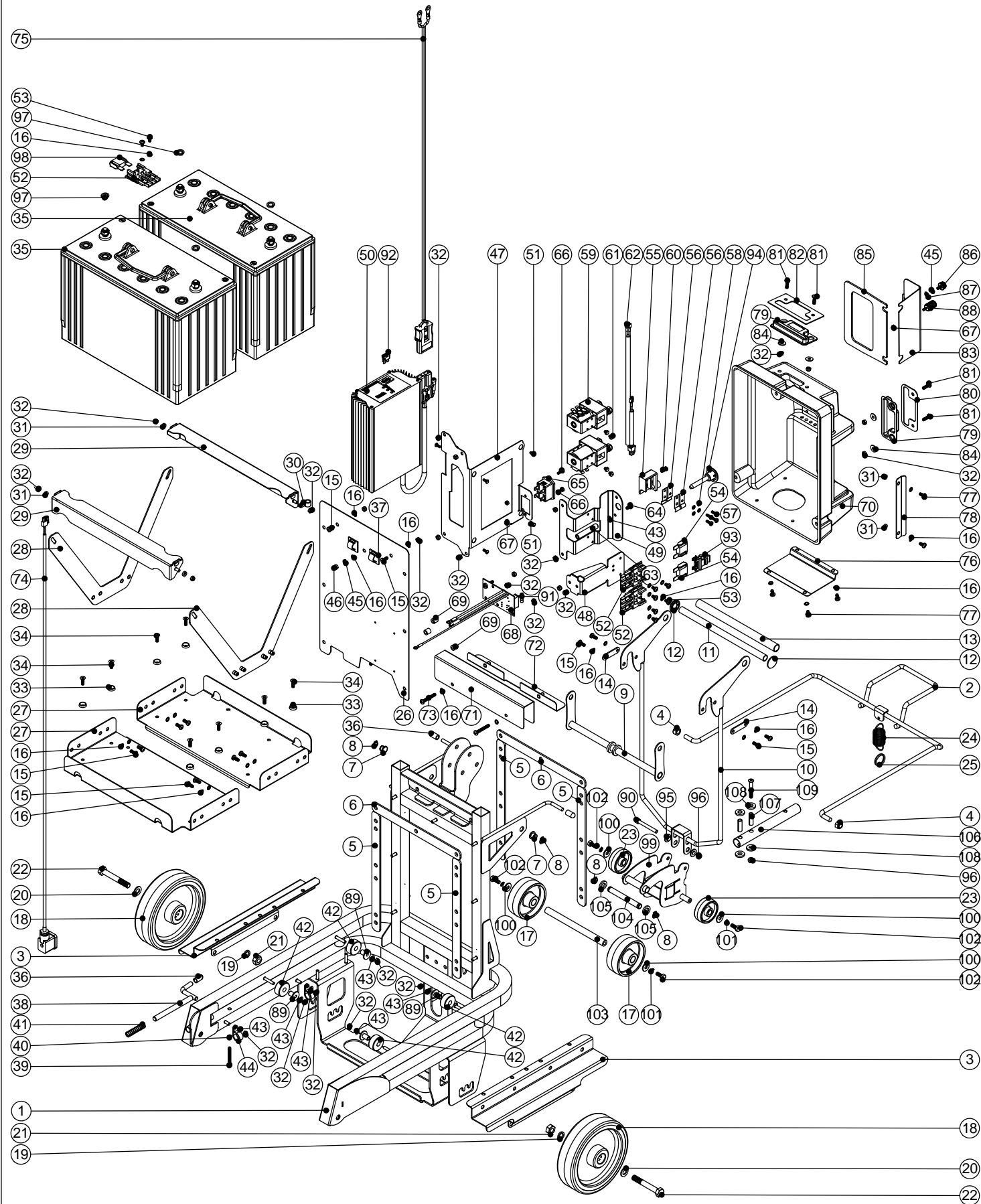


Numatic International Spare Parts

Model No: TTB-3450/TTB-4500/TTB-4552 CHASSIS/BACKPLATE/ELECTRICAL ASSY

234321
DRAWING: EXP-0752 ISS:A15
17/12/2009



Numatic International Spare Parts

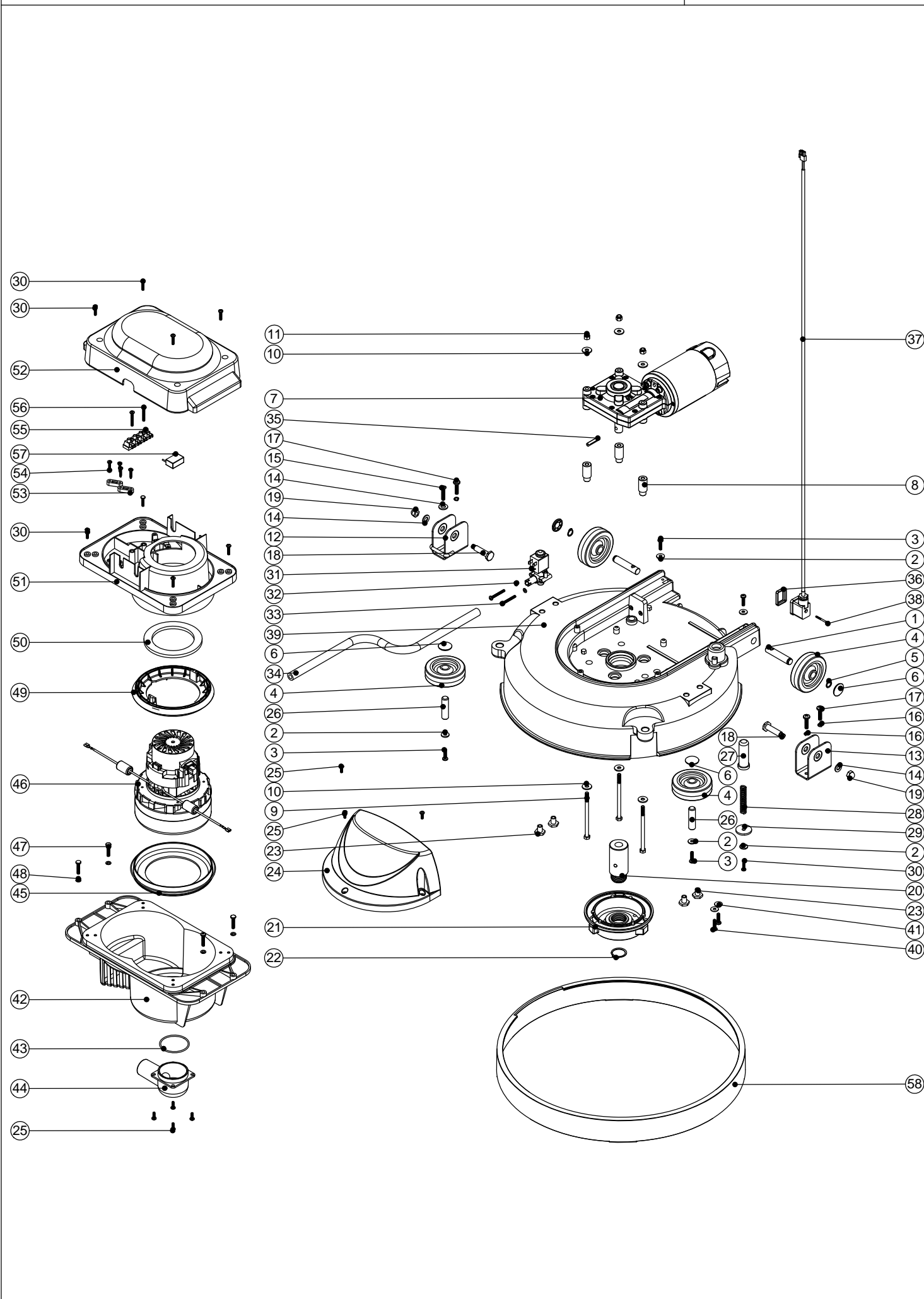
Model No: TTB-3450/TTB-4500/TTB-4552 CHASSIS/BACKPLATE/ELECTRICAL ASSY

POS:	ITEM NO:	DESCRIPTION:	COMMENTS:
1	329476	NUTSERTED WELDED CHASSIS ASSEMBLY	
2	303620	BATTERY ADJUSTMENT HANDLE W/A	
3	329416	BATTERY SLIDER BRACKET	
4	219639	M8 STAINLESS STEEL NYLON INSERT NUT	
5	202112	CHASSIS GASKET - VERTICAL	
6	202113	CHASSIS GASKET - HORIZONTAL	
7	206647	PIVOT BUSH	
8	219586	10MM EXTERNAL CIRCLIP	
9	303594	FLOOR TOOL PIVOT LINK ASSEMBLY	
10	303595	FLOOR TOOL LIFTING FRAME	
11	391037	235MM LONG X 1/2 INCH DIAMETER X 18G STAINLESS STEEL TUBE	
12	204021	12.7MM STAINLESS STEEL HUB CAP	
13	391038	218MM LONG BLACK NYLON TUBE	
14	329395	FIXING BRACKET	
15	219740	M5 X 12MM LONG STAINLESS STEEL POZI PAN SCREW	
16	219016	M5 SHAKEPROOF WASHER	
17	206713	80MM DIAMETER BLACK WHEEL	
18	204080	160MM DIA WHEEL / POLYURETHENE TYRE (GREY - RAL 7042) C/W SPACER	
19	219349	M10 SINGLE COIL WASHER	
20	219449	M10 FORM A WASHER	
21	219074	M10 FULL NUT	
22	219570	M10 X 70MM LONG HEX BOLT	
23	206712	50MM DIAMETER BLACK WHEEL	
24	226023	EXTENSION SPRING	
25	229293	1 INCH (STAINLESS STEEL) SPLIT RING	
26	303626	BACKPLATE C/W STUDS	
27	403043	BATTERY TRAY (PAINTED GREY)	
28	303636	NUTSERTED STAINLESS STEEL BATTERY STRAP	
29	303603	BATTERY ANGLE BRACKET WELDED ASSEMBLY	
30	219393	P CLIP	
31	219867	NYLON SPACER	
32	219633	M5 STAINLESS STEEL NYLON INSERT NUT	
33	219573	SCREW INSULATOR	
34	219572	M5 X 16MM LONG POZI PAN COUNTERSUNK STAINLESS STEEL SCREW	
35	230138	98 A/H STUD TERMINAL GEL TYPE BATTERY	
36	229240	END TIP	
37	220403	CABLE CLIP	
38	303483	LOCKING BAR WELDED ASSEMBLY	
39	21932V	M5 X 40MM LONG POZI PAN SCREW	
40	219861	M5 SINGLE COIL STAINLESS STEEL WASHER	
41	219873	COMPRESSION SPRING (STAINLESS STEEL)	
42	206648	ROLLER	
43	219355	M5 FORM A STAINLESS STEEL WASHER	
44	219514	P-CLIP	
45	219721	M5 STAINLESS STEEL FULL NUT	
46	219398	M5 DOMENUT	
47	329432	CHARGER MOUNTING BRACKET	
48	303630	FUSE HOLDER BRACKET WELDED ASSEMBLY	
49	329398	CONTACT MOUNTING PLATE	
50	230140	230V/24V/10 AMP HF NORD CHARGER (D11 REMOVED & REPLCED WITH LINK WIRE)	
	230141	115V/24V/10 AMP HF NORD CHARGER (D11 REMOVED)	
51	219301	No6 X 3/8 INCH LONG POZI PAN SELF TAP SCREW	
52	230102	FUSE HOLDER RATED AT 60 AMPS	
53	219864	M5 X 8MM LONG POZI PAN SCREW	
54	230104	30 AMP MAXI FUSE	
55	321156	ISOLATOR BLOCK & INSERTS ASSEMBLY	
56	219466	ISOLATOR CONTACT	
57	221151	M4 X 12MM LONG POZI PAN SCREW	
58	219015	M4 SHAKEPROOF WASHER	
59	230111	CONTACTOR	
60	219569	No8 X 1/2 INCH LONG POZI PAN STAINLESS STEEL PLASTITE SCREW	
61	219566	M4 X 6MM LONG POZI PAN SCREW	
62	236097	CONTACTOR LEAD ASSEMBLY	
63	208000	92MM LONG ALUMINIUM SPACER	
64	219047	M5 X 10MM LONG POZI PAN SEMS SCREW	
65	221035	HOURS METER	
66	219471	M4 X 12MM LONG POZI PAN SEMS SCREW	
67	219687	M4 STAINLESS STEEL NYLON INSERT NUT	
68	221029	CURRENT SHUNT / CONNECTION PCB	
69	219574	NYLON SPACER	
70	229550	PROCESSED ENCLOSURE BOX	
71	329447	COVER PLATE	
72	303631	NUTSERTED SPLASH GAURD	
73	219661	M5 X 35MM LONG POZI PAN STAINLESS STEEL SCREW	
74	236096	SOLENOID LEAD ASSEMBLY	
75	321119	750MM LONG DC CHARGING LEAD ASSEMBLY	
76	329440	EXHAUST COVER PLATE	
77	219668	M5 X 10MM LONG POZI PAN STAINLESS STEEL SCREW	
78	329452	FUSE COVER RETAINING PLATE	
79	206664	LENS MOULDING (NO PRINT)	
80	329448	LENS COVER PLATE 2	
81	219547	M5 X 16MM LONG POZI PAN STAINLESS STEEL SCREW	
82	329445	LENS COVER PLATE	
83	329435	FUSE COVER PLATE	
84	219644	M5 FORM G STAINLESS STEEL WASHER	
85	202117	FUSE COVER GASKET	
86	206666	M5 KNURLED KNOB	
87	206667	M5 RETAINING WASHER	
88	219738	M4 KNOB	
89	206677	ROLLER SPACER	
90	219748	M6 X 50MM STAINLESS STEEL CAP HEAD BOLT	
91	221038	2 AMP 20MM QUICK BLOW FUSE	
92	221037	20 AMP FUSE	
93	230112	MAXI FUSE PULLER	
94	220681	ISOLATOR KNOB	
95	219417	UNIFIED M/C SCREW INSULATOR	
96	219642	M6 STAINLESS STEEL NYLON INSERT NUT	
97	219899	M10 SINGLE COIL STAINLESS STEEL WASHER	
98	230103	70 MAXI AMP FUSE	
99	303901	FLOOR TOOL CONNECTOR WELDED ASSEMBLY	
100	219647	M6 FORM G STAINLESS STEEL WASHER	
101	219718	M6 STAINLESS STEEL SPRING WASHER	
102	219719	M6 X 16MM LONG HEXAGONAL STAINLESS STEEL HEAD BOLT	
103	208181	TAPPED REAR AXLE	
104	208180	CHARIOT PIVOT TUBE	
105	219664	NYLON WASHER (18MM O/D X 10.4MM I/D X 3MM THICK)	
106	303902	FLOOR TOOL PIVOT TUBE	
107	206954	SPIRO SPACER	
108	206964	SLIDE NYLON SPACER	
109	219807	M6 X 40MM LONG SOCKET BUTTON HEAD BOLT	

Numatic International Spare Parts

Model No: TTB-3450/TTB-4500 BASE / VAC POD ASSEMBLY EXPLODED DRAWING

234322
DRAWING: EXP-0753 ISS:A04
04/12/2009



Numatic International Spare Parts

Model No: TTB-3450/TTB-4500 BASE / VAC POD ASSEMBLY EXPLODED DRAWING

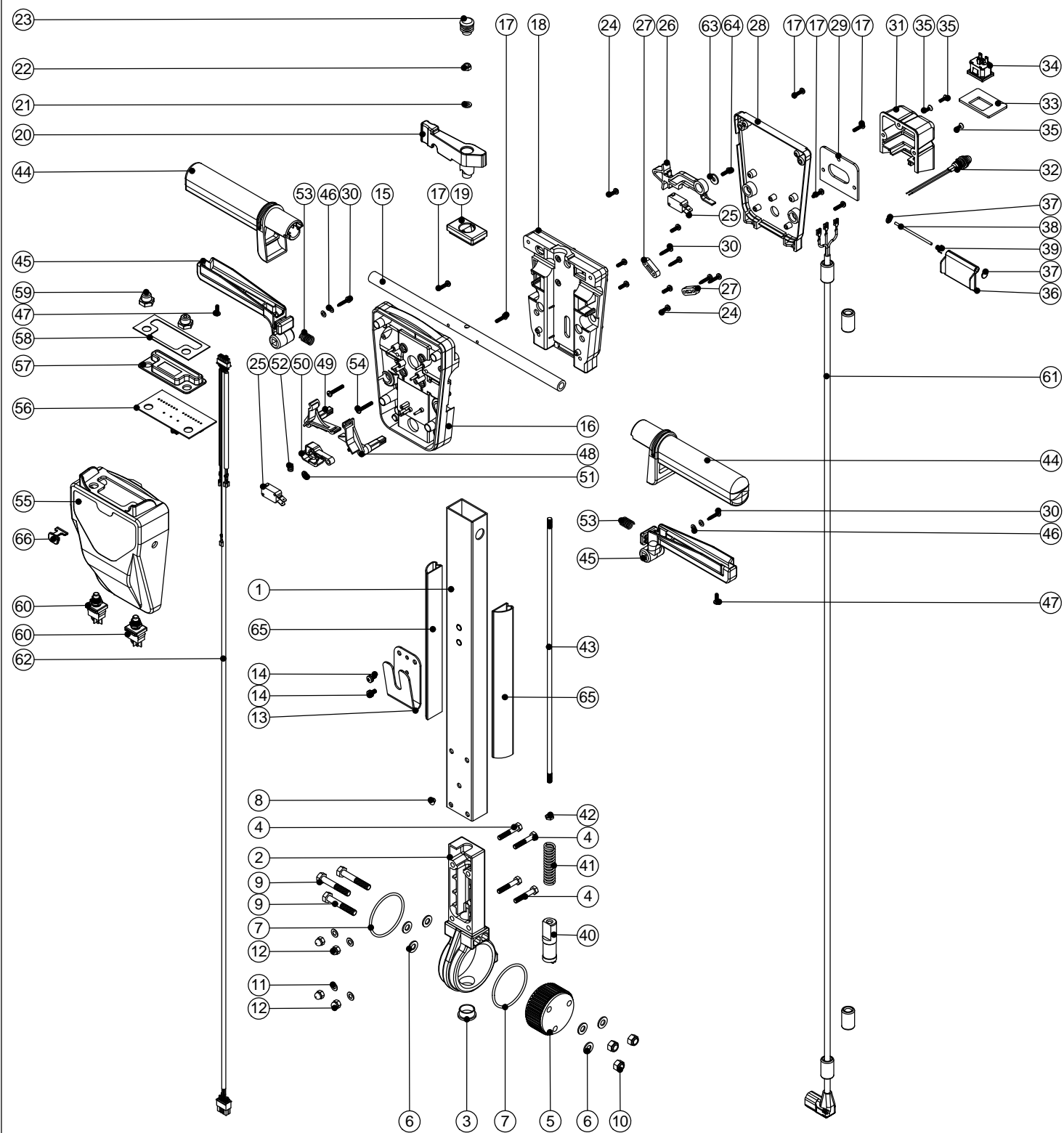
POS:	ITEM NO:	DESCRIPTION:	COMMENTS:
1	229382	REAR WHEEL PIN	
2	219005	M5 FORM G WASHER	
3	219546	M5 X 20MM LONG POZI PAN SEMS SCREW	
4	204068	3 INCH GREY WHEEL	
5	219345	12MM EXTERNAL CIRCLIP	
6	204021	12.7MM STAINLESS STEEL HUB CAP	
7	205109	24V DC PM MOTOR / GEARBOX	
8	229200	MOTOR MOUNTING SPACER	
9	219863	M6 X 100MM LONG HEXAGONAL HEAD BOLT	
10	219008	M6 FORM G WASHER	
11	219088	M6 NYLON INSERT NUT	
12	404041	PIVOT BRACKET WELDED ASSEMBLY	
13	403210	NON LOCKING PIVOT BRACKET	
14	219010	M8 FORM A WASHER	
15	219506	M6 X 25MM LONG POZI PAN COUNTERSUNK SCREW	
16	219549	M6 SINGLE COIL WASHER	
17	219056	M6 X 25MM LONG POZI PAN SCREW	
18	206236	PIVOT PIN	
19	219077	M8 DOMENUT	
20	229201	DRIVE SHAFT	
21	230207	CHUCK	
22	230048	26MM EXTERNAL CIRCLIP	
23	219606	BRACKET SPACER	
24	229499	MOTOR COVER BATTERY	
25	219569	No8 X 1/2 INCH LONG POZI PAN STAINLESS STEEL PLASTITE SCREW	
26	206013	BUFFER WHEEL PIN	
27	229128	PLUNGER	TTB-4500
28	219394	COMPRESSION SPRING	TTB-4500
29	219457	30MM O/D X 6.4 I/D X 3MM THICK NYLON WASHER	TTB-4500
30	219568	No8 X 3/4 INCH LONG POZI PAN STAINLESS STEEL SCREW	
31	220379	24V D.C. SOLENOID VALVE	
32	219206	M4 FORM A WASHER	
33	219703	M4 X 35MM LONG STAINLESS STEEL POZI PAN SCREW	
34	303248	900MM LONG SILICON TUBE	
35	219523	GROOVED PIN	
36	202081	REPLACEMENT MPM CONNECTOR GASKET	
37	236096	SOLENOID LEAD ASSEMBLY	
38	219251	REPLACEMENT MPM CONNECTOR M3 SCREW	
39	329453	INSERTED GREY BASE MOULDING ASSEMBLY	TTB-3450
	329459	INSERTED GREY BASE MOULDING ASSEMBLY	TTB-4500
40	219571	M5 X 20MM LONG POZI PAN STAINLESS STEEL SCREW	
41	219644	M5 FORM G STAINLESS STEEL WASHER	
42	229204	BOTTOM MOTOR HOUSING (STANDARD MATERIAL)	
43	219561	51.6MM I/D O RING	
44	229207	INLET TUBE	
45	202111	BOTTOM MOTOR GASKET	
46	321106	24V D.C BP MOTOR ASSEMBLY	
47	219575	M5 X 25MM LONG POZI PAN STAINLESS STEEL SCREW	
48	219003	M5 FORM A STEEL WASHER	
49	202107	TOP MOTOR GASKET	
50	202078	MOTOR CAP GASKET	
51	229998	VAC POD TOP MOTOR HOUSING C/W TAPPEX	
52	229206	VAC POD TOP COVER MOULDING	
53	227008	BLACK CABLE CLAMP	
54	219107	No6 X 5/8 INCH LONG POZI PAN PLASTITE SCREW	
55	220204	TERMINAL BLOCK	
56	219321	M4 X 30MM LONG POZI PAN SCREW	
57	321139	SUPPRESSOR	
58	229644	450MM DIAMETER SPLASH SKIRT MOULDING	TTB-3450 (BOXED VERSION: 606713)
	304227	500MM DIAMETER SPLASH SKIRT MOULDING	TTB-4500 (BOXED VERSION: 310019)

Numatic International Spare Parts

Model No:TTB3450/TTB4550/TTB4552/TTB3450C/TTB3450CRS Handle Assembly

234320
DRAWING: EXP-0751 ISS:A06
06/10/2009

NB: FOR WIRING SEE DRAWING: WD-0295



Numatic International Spare Parts

Model No:TTB3450/TTB4550/TTB4552/TTB3450C/TTB3450CRS Handle Assembly

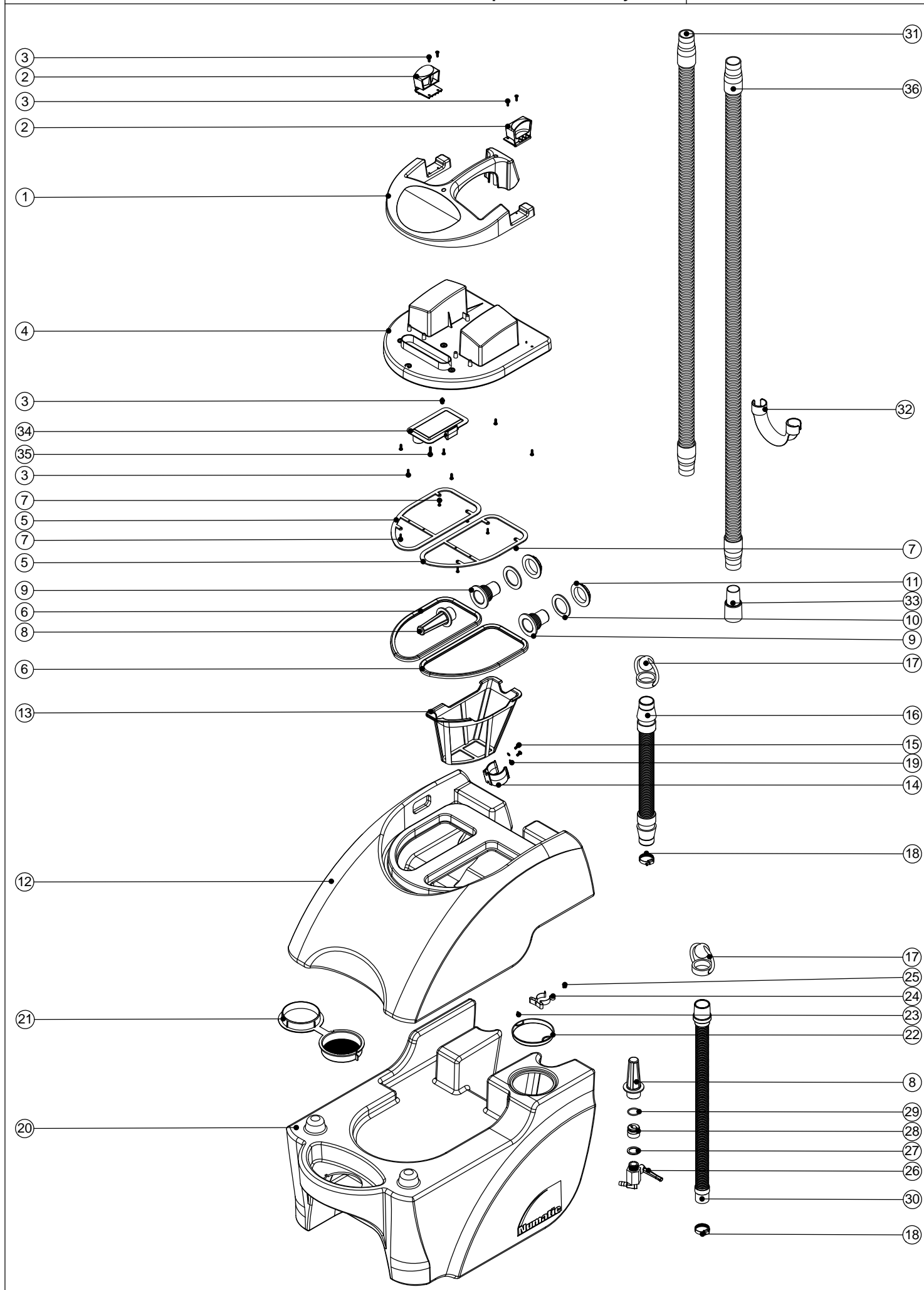
POS:	ITEM NO:	DESCRIPTION:	COMMENTS:
1	429074	430MM PAINTED PROCESSED ALUMINIUM HANDLE	
2	229081	HANDLE CASTING MACHINED	
3	229099	25MM DIA HOLE PLUG	
4	219064	M6 X 35MM LONG HEX BOLT	
5	229074	ADJUSTMENT GEAR	
6	219010	M8 FORM A WASHER	
7	219254	O RING 3MM DIA X 60MM I/D	
8	229009	BLANKING PLUG	
9	219091	M8 X 50MM LONG HEX BOLT	
10	219078	M8 NYLON INSERT NUT	
11	219007	M6 FORM B WASHER	
12	219080	M6 DOMENUT	
13	329397	SEPARATOR HANGING BRACKET	
14	219047	M5 X 10MM LONG POZI PAN SEMS SCREW	
15	338269	CROSS TUBE	
16	227576	FRONT INNER HALF MOULDING	
	229508	FRONT INNER HALF MOULDING	FLAME RETARDENT (120V MACHINE)
17	219105	No8 X 5/8 INCH LONG POZI PAN PLASTITE SCREW	
18	227577	REAR INNER HALF MOULDING	
	229509	REAR INNER HALF MOULDING	FLAME RETARDENT (120V MACHINE)
19	227582	HANDLE PLUG MOULDING	
20	227583	ADJUSTMENT LEVER MOULDING	
21	219493	M6 NYLON WASHER	
22	219642	M6 STAINLESS STEEL NYLON INSERT NUT	
23	20638V	19MM BLACK TUBE END STOP	
24	219101	No8 X 1/2 INCH LONG POZI PAN PLASTITE SCREW	
25	229483	SNAP ACTION SWITCH	
26	227584	INTERLOCK LEVER MOULDING	
27	227008	BLACK CABLE CLAMP	
28	303509	MODIFIED REAR COVER	
	303628	MODIFIED REAR COVER	FLAME RETARDENT (120V MACHINE)
29	202105	SOCKET COVER SEALING GASKET	
30	219107	No6 X 5/8 INCH LONG POZI PAN PLASTITE SCREW	
31	329355	SOCKET COVER DRILLED	
	303629	SOCKET COVER DRILLED	FLAME RETARDENT (120V MACHINE)
32	270193	NEON INDICATOR RED LENS 230V C/W LINK WIRES	
	270195	NEON INDICATOR RED LENS 120V C/W LINK WIRES	
33	329297	SOCKET MOUNTING PLATE	
34	220391	3 PIN APPLIANCE SOCKET	
35	219683	No6 X 3/8 INCH LONG POZI PAN BLACK COUNTERSUNK PLASTITE SCREW	
36	227781	FLAP MOULDING	
37	219832	3MM DIAMETER STARLOCK	
38	390979	72MM LONG X 3MM DIAMETER STAINLESS STEEL BAR	
39	219819	TORSION SPRING	
40	229073	GEAR LOCKING PIN	
41	229138	SPRING	
42	219099	M6 HALF NUT	
43	229461	440MM HANDLE LOCKING ROD	
44	227580	HAND GRIP MOULDING	
45	229500	TRIGGER MOULDING BLUE	
46	219206	M4 FORM A WASHER	
47	219270	No8 X 1/2 INCH LONG POZI PAN SELF TAP SCREW	
48	227585	LEFT HAND SWITCH OPERATING LEVER MOULDING	
49	227586	RIGHT HAND SWITCH OPERATING LEVER MOULDING	
50	227587	CENTRE SWITCH OPERATING LEVER MOULDING	
51	219805	4MM SPIREFIX	
52	219804	SWITCH COMPRESSION SPRING	
53	219803	TRIGGER COMPRESSION SPRING	
54	219811	NO8 X 1 INCH LONG POZI-PAN SELF TAP SCREW	
55	229752	BATTERY FRONT COVER (LESS AUX VAC SWITCH & USB HOLE)	
	229753	FRONT COVER (LESS AUX VAC SWITCH & USB HOLE)	TTB3450/4550/4552 (FLAME RETARDANT)
	229760	FRONT COVER (LESS AUX VAC SWITCH HOLE)	TTB3450C/TTB3450CRS (STANDARD)
	229761	FRONT COVER (LESS AUX VAC SWITCH HOLE)	TTB3450C/TTB3450CRS (FLAME RETARDANT)
56	221028	CONTROL PCB	TTB3450 /4550/4552
	208214	CONTROL PCB C/W USB (WEB SERVICE ENABLED)	TTB3450C/TTB3450CRS
57	206646	LENS MOULDING	
58	220725	SELF ADHESIVE LENS GASKET	
59	220600	SWITCH COVER	
60	220597	PUSH BUTTON SWITCH	
61	321132	AC CHARGING LEAD ASSEMBLY C/W 2 FERRITES	
62	236066	HANDLE HARNESS	
63	219005	M5 FORM G WASHER	
64	219601	No8 X 3/8 INCH LONG POZI PAN PLASTITE SCREW	
65	391074	230MM LONG CUT SELF ADHESIVE CABLE DUCTING	
66	229743	USB PLUG MOULDING	TTB3450C/TTB3450CRS MACHINES ONLY
67	230097	AXIAL FERRITE BEAD	

Numatic International Spare Parts

ModelNo:TTB4500/100ST/TT3450S/TT3450C/TTB3450S/TTB3450C/TT4500S/TT4550S/
TTB4500S/TTB4552S/TTB3450CRS/TTB4552/100ST Tank / Separator Assembly

234276

DRAWING: EXP-0707 ISS:A19
11/05/2010



Numatic International Spare Parts

ModelNo:TTB4500/100ST/TT3450S/TT3450C/TTB3450S/TTB3450C/TT4500S/TT4550S/TTB4500S/
TTB4552S/TTB3450CRS/TTB4552/100ST Tank / Separator Assembly

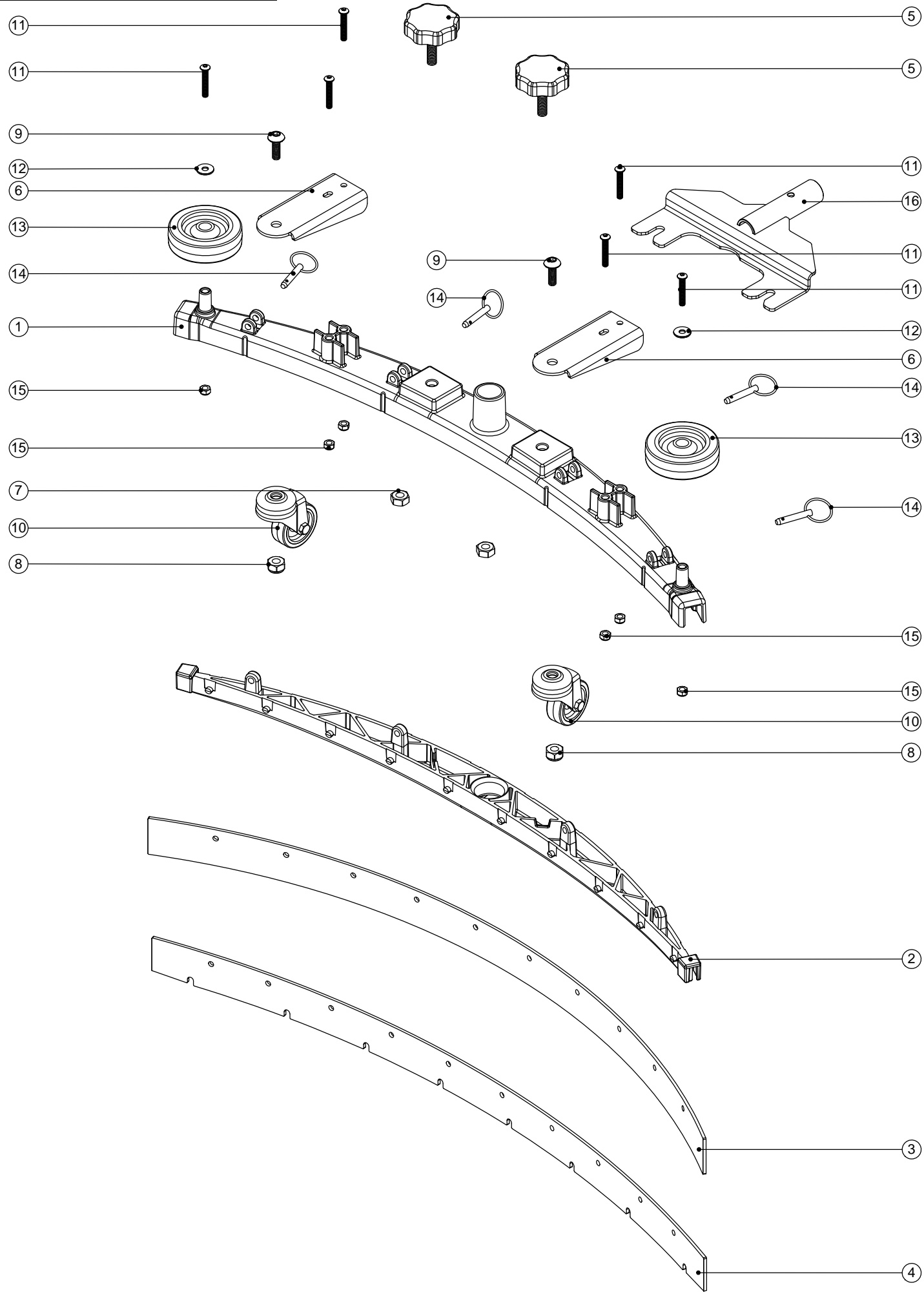
POS:	ITEM NO:	DESCRIPTION:	COMMENTS:
1	229493	SEPARATOR TOP	
2	229494	CLIP MOULDING	
3	219569	No8 X 1/2 INCH LONG POZI PAN STAINLESS STEEL PLASTITE SCREW	
4	303604	PROCESSED SEPARATOR MOULDING (S TYPE)	
5	329408	GASKET SUPPORT RING	
6	202110	SEALING GASKET	
7	219852	NO6 X 1/2 LONG POZI PAN STAINLESS STEEL SELF TAP SCREW	
8	206265	BARREL FILTER	
9	206228	DRAIN HOSE CONNECTOR	
10	219310	RUBBER WASHER	
11	206116	BLACK NUT	
13	229488	BLUE TOP TANK	TT3450S/TTB3450S/TTB3450C/TT3450C/TTB3450CRS
	229490	BLUE TOP TANK	TT4550S/TTB4500S/TTB4552S/TT4500/TTB4500/100ST/TTB4552/100ST
13	207000	GRIT FILTER BASKET	
14	229762	HOSE CLIP MOULDING	
15	219668	M5 X 10MM LONG POZI PAN STAINLESS STEEL SCREW	
16	206842	420MM LONG BLACK STRETCH HOSE C/W CUFFS	
17	206111	HOSE CLOSURE	
18	219674	30/40MM DIAMETER STAINLESS STEEL JUBILEE CLIP	
19	219016	M5 SHAKEPROOF WASHER	
20	229491	BLUE BOTTOM TANK	TT3450S
	229489	BLUE BOTTOM TANK	TTB4500S/TTB4552S/TTB4500/100ST/TTB4552/100ST
	229536	BLUE BOTTOM TANK	TT4550S/TTB4500S
	229487	BLUE BOTTOM TANK	TTB3450S/TTB3450C/TT3450C/TTB3450CRS
21	229282	FILTER CAP	
22	219452	100MM DIAMETER HOLE PLUG	
23	219688	M4 FORM A STAINLESS STEEL WASHER	
24	219665	TOOL CLIP	
25	219697	M4 X 8MM LONG POZI PAN STAINLESS STEEL SCREW	
26	206597	TANK TAP	
27	219974	BONDED WASHER 5/8 BSP NON S/C	
28	206274	FILTER CONNECTOR	
29	219626	23MM I/D X 2.5MM SECTION O RING	
30	213025	600MM - 630MM LONG DUMP HOSE ASSEMBLY	
31	206697	1300MM LONG SUCTION HOSE	TTB3450S/TTB4500S/TTB4552S (VAC HOSE)
	206698	1500MM LONG SUCTION HOSE	TTB3450C/TT3450C (VAC HOSE)
	206696	1200MM LONG SUCTION HOSE	TT3450S/TT4500S/TT4550S (VAC HOSE)
	329787	1600MM LONG SUCTION HOSE	TTB4500/100ST / TTB4552/100ST (VAC HOSE)
	329786	1.85 METER LONG X 32MM DIAMETER SUCTION HOSE	TTB-3450CRS (VAC HOSE)
32	206512	HOSE HOOK	ALL MACHINES EXCEPT TTB3450C
33	237220	38/32MM ADAPTOR	ALL MACHINES EXCEPT TTB3450C
34	237090	SEPARATOR FLOAT MOULDING (MK 2)	
35	219568	No8 X 3/4 INCH LONG POZI PAN STAINLESS STEEL SCREW	
36	206698	1500MM LONG SUCTION HOSE	ALL MACHINES:EXCEPT TTB3450C (FLOOR TOOL HOSE)
	329786	1.85 METER LONG X 32MM DIAMETER SUCTION HOSE	TTB3450C & TT3450C (FLOOR TOOL HOSE)

Numatic International Spare Parts

Model No: Twintec Squeegee Assy (650mm Scrub Width/38mm Hose)

234680
DRAWING: DRW-4435 ISS: A02
20/10/2009

NB: FOR WIRING SEE DRAWING: N/A



Numatic International Spare Parts

Model No: Twintec Squeegee Assy (650mm Scrub Width/38mm Hose)

POS:	ITEM NO:	DESCRIPTION:	COMMENTS:
1	208198	(650MM SCRUB WIDTH) ALUMINIUM SQUEEGEE CASTING (38MM HOSE FITTING)	
2	229987	(650MM SCRUB WIDTH) BLADE HOLDER MouldING (SLOPING PROFILE) (32MM & 38MM HOSE FITTING)	
3	206978	(650MM SCRUB WIDTH) REPLACEMENT (3.2MM / 43 SHORE A) REAR POLY/BLADE (847MM LONG)	STANDARD BLADE
	208202	(650MM SCRUB WIDTH) REPLACEMENT (4.0MM / 50 SHORE A) REAR POLY/BLADE (847MM LONG)	PREMIUM BLADE OPTION
	208203	(650MM SCRUB WIDTH) REPLACEMENT (4.0MM / 40 SHORE A) REAR RED LINATEX PREMIUM NATURAL RUBBER /BLADE (847MM LONG)	PREMIUM BLADE OPTION
4	206977	(650MM SCRUB WIDTH) REPLACEMENT (3.2MM / 43 SHORE A) FRONT POLY/BLADE (819MM LONG)	STANDARD BLADE
	208199	(650MM SCRUB WIDTH) REPLACEMENT (3.2MM / 50 SHORE A) FRONT POLY/BLADE (819MM LONG)	PREMIUM BLADE OPTION
	208201	(650MM SCRUB WIDTH) REPLACEMENT (3.2MM / 40 SHORE A) FRONT RED LINATEX PREMIUM NATURAL RUBBER /BLADE (819MM LONG)	PREMIUM BLADE OPTION
5	206951	QUICK RELEASE KNOB	
6	329825	CASTOR PLATE	
7	219963	M10 STAINLESS STEEL FULL NUT	
8	219897	M10 STAINLESS STEEL NYLON INSERT NUT	
9	219910	M10 X 25MM LONG SOCKET BUTTON HEAD STAINLESS STEEL SCREW	
10	204018	50MM CASTOR/GREY RUBBER TYRE	
11	219933	M6 X 35MM SOCKET BUTTON HEAD BOLT STAINLESS STEEL	
12	219647	M6 FORM G STAINLESS STEEL WASHER	
13	204068	3 INCH GREY WHEEL	
14	206953	DETENT PINS	
15	219853	M6 NYLOC HALF NUT (STAINLESS STEEL)	
16	303871	FLOOR TOOL LIFTING PLATE WELDED ASSEMBLY	

WIRING DIAGRAM

COMP No
123271

DRG. No
WD-0295

TTB3450/4500/4552/3450C/3450CRS WIRING DIAGRAM

ISSUE	REVISION	DRAWN	APPD.	DATE
A 10	YELLOW & GREY WIRES FROM 236066 LOOM WAS INCORRECTLY SHOWN, NOW SWAPPED OVER.	AM	MC	11:05:10

