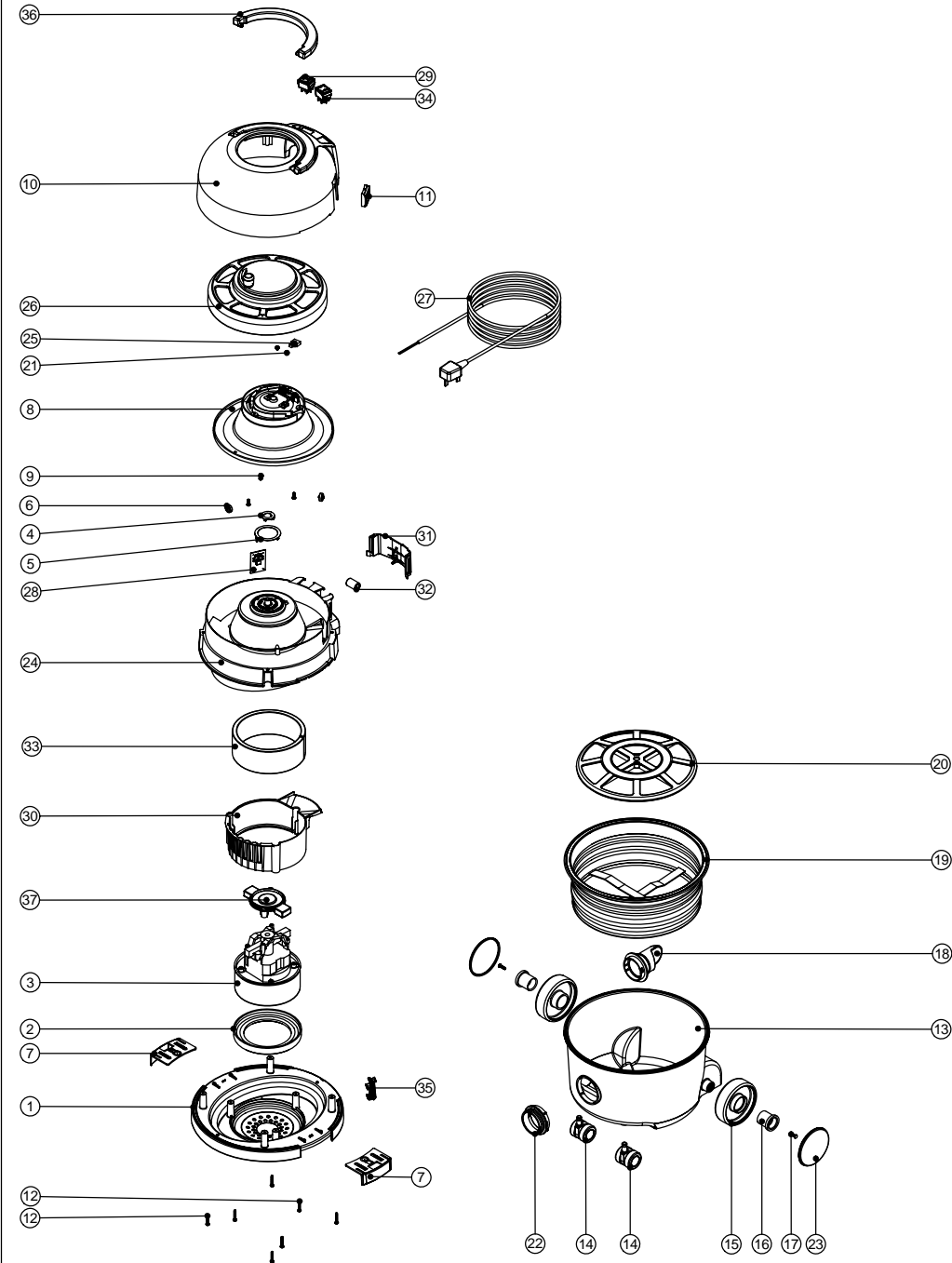


Numatic International Spare Parts

Model No: HVR200-22 / HVR200M-22 / HVX200-22 / HET200-22

234393
DRAWING: EXP-0824 ISS:A06
04/04/2008

NB : FOR WIRING SEE DRAWING: WD-0333

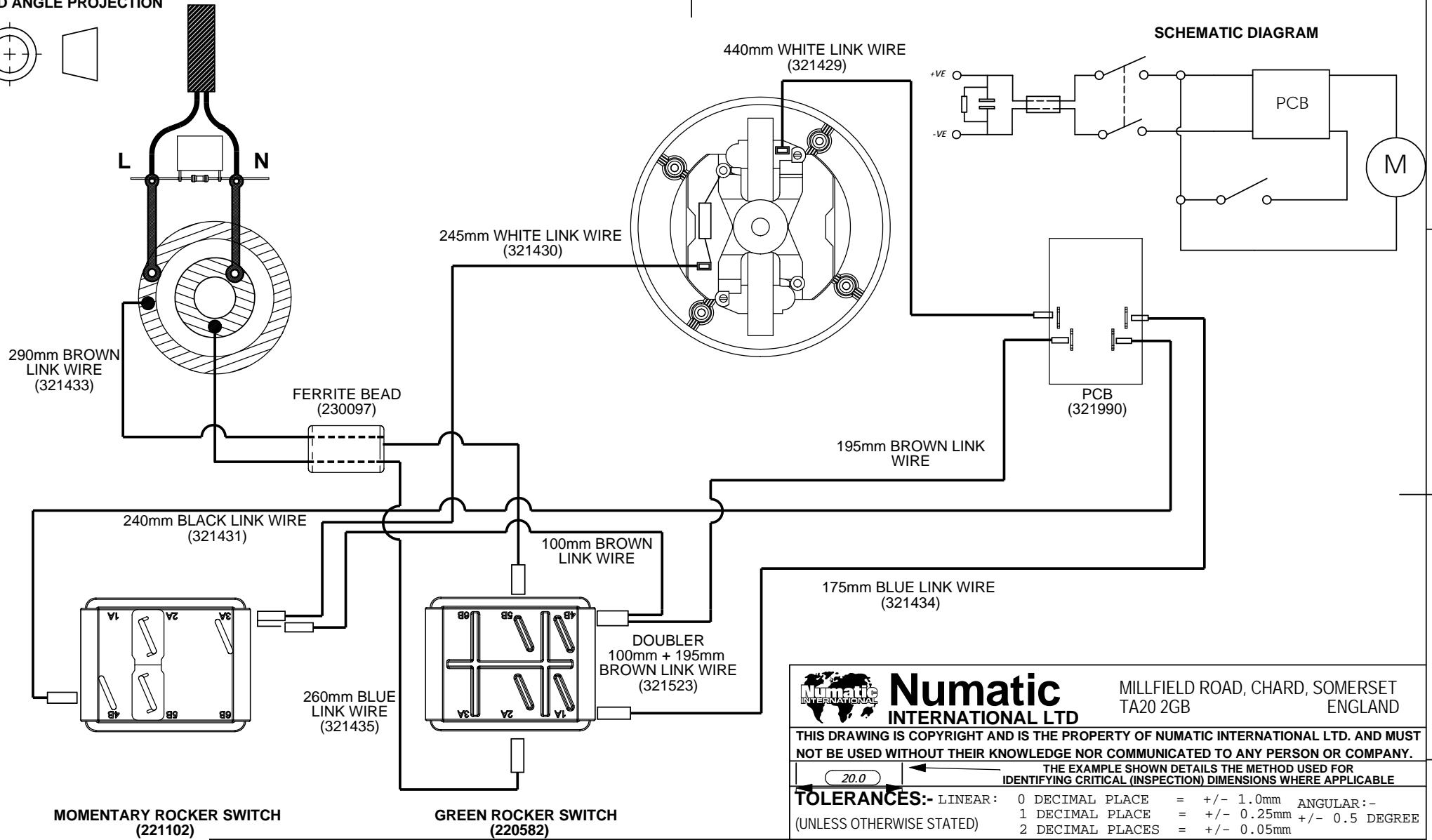
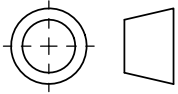


Numatic International Spare Parts

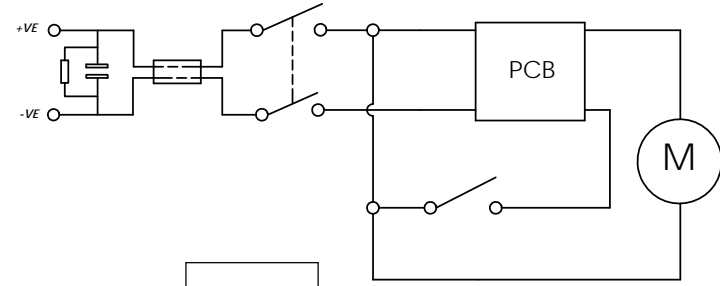
Model No: HVR200-22 / HVR200M-22 / HVX200-22 / HET200-22

POS:	ITEM NO:	DESCRIPTION:	COMMENTS:
1	229618	BOTTOM MOTOR HOUSING (TWIN SHOT)	
2	227882	BOTTOM MOTOR GASKET	
3	205403	240V 2 STAGE THRO FLOW TAPER FAN MOTOR (DL21104T) TCO	
	205402	220V 2 STAGE THRO FLOW TAPER FAN MOTOR (DL21102T) TCO (MARKED 230V)	
	205401	120V 2 STAGE THRO FLOW TAPER FAN MOTOR (DL21101T) TCO	
	205225	120V 2 STAGE THRO FLOW TAPER FAN ECO MOTOR (DL21101ET) TCO	TAIWAN SPECIFICATION
4	227141	INNER CONTACT RING	
5	227142	OUTER CONTACT RING	
6	227436	ROLLER WHEEL	
7	229622	TOGGLE (TWIN SHOT)	
8	227447	CABLE REEL MOULDING ASSEMBLY	
	227348	CABLE REEL MOULDING ASSEMBLY	CSA APPROVED MACHINES
9	219101	No8 X 1/2 INCH LONG POZI PAN PLASTITE SCREW	
10	229626	COVER + HANDLE ASSEMBLY (PRINTED WHITE HENRY LOGO)	INCLUDES ITEM 37 (227120 HANDLE)
	325618	COVER + HANDLE ASSEMBLY (WHITE LOGO PRINTED HENRY MICRO)	INCLUDES ITEM 37 (227120 HANDLE)
	229642	COVER + HANDLE ASSEMBLY (PRINTED WHITE HENRY XTRA LOGO)	INCLUDES ITEM 37 (227120 HANDLE)
	229799	COVER + HANDLE ASSEMBLY PRINTED HETTY	INCLUDES ITEM 37 (227120 HANDLE)
11	227108	BLACK CABLE ENTRY	
12	219104	No8 X 1 INCH LONG POZI PAN PLASTITE SCREW	
13	227442	RED CONTAINER + FACE	
	227443	BLUE CONTAINER + FACE	
	227444	GREEN CONTAINER + FACE	
	227445	YELLOW CONTAINER + FACE	
	229796	PINK CONTAINER + FACE	
14	204000	40MM PU-TYRED BLACK TWIN WHEEL CASTOR	
15	227640	2 SHOT WHEEL ASSEMBLY	
16	227868	WHEEL HUB FOR 2 SHOT WHEEL	
17	219105	No8 X 5/8 INCH LONG POZI PAN PLASTITE SCREW	
18	227363	BAG CONNECTOR	
19	207098	WHITE FILTER (SMS) + U GASKET	HVR200-22
	207057	COMBINATION MICROTTEX FILTER ASSEMBLY	HVR200M-22
	207099	MICRO FRESH FILTER (CHARCOAL)	HVX200-22
20	209200	12 INCH FILTER GRID	
21	219090	M4 X 8MM LONG POZI PAN SEMS SCREW	
22	227396	RED THREADED NECK	
	227397	BLUE THREADED NECK	
	227398	GREEN THREADED NECK	
	227399	YELLOW THREADED NECK	
23	227687	RED TRIM	
	227688	BLUE TRIM	
	227689	GREEN TRIM	
	227690	YELLOW TRIM	
	229798	PINK TRIM	
24	229620	TOP MOTOR HOUSING	
	325682	HVR/NRV TOP MOTOR HOUSING (TWIN ROCKER SWITCH) MODIFIED FOR 1.5MM CABLE	INDUSTRIAL MACHINES ONLY
	229739	TOP MOTOR HOUSING + CONTACT RING ASSEMBLY (V2 RATED MATERIAL)	CSA APPROVED MACHINES
25	230096	SUPPRESSOR CAPACITOR ASSEMBLY WITH DISCHARGE RESISTOR	
26	333113	CABLE REEL COVER ASSEMBLY (C/W WINDER KNOB)	
27	236115	MAINS CABLE (10 METRE LONG X 0.75MM X 2 CORE (H05 V2V2-F) UK PLUG)	
	220860	MAINS CABLE (2 CORE / SWISS PLUG)	
	220863	MAINS CABLE (2 CORE / SOUTH AFRICAN PLUG)	
	236029	MAINS CABLE (2 CORE / NZ PLUG)	
	236049	MAINS CABLE (2 CORE / 16 AMP INDUSTRIAL PLUG)	INDUSTRIAL MACHINES ONLY
	236106	MAINS CABLE (2 CORE / 1.5MM / 10 METRE BLACK TAIWAN CABLE / TW15CS2)	
28	321990	NUMATIC 2 SPEED CONTROL PCB (120V) RED BOARD	
29	220243	BLACK/GREEN ROCKER SWITCH	
30	229621	AIR GUIDE	
31	229623	SWITCH COVER	
32	230097	AXIAL FERRITE BEAD	
33	203020	POD SIDE FELT	
34	220552	RED ROCKER SWITCH	
35	229426	HENRY CLIPHOLDER	
36	227120	HANDLE	
37	229614	MOTOR PLATE BI -MATERIAL	

THIRD ANGLE PROJECTION



SCHEMATIC DIAGRAM



MOMENTARY ROCKER SWITCH
(221102)

GREEN ROCKER SWITCH
(220582)

All components must be ROHS compliant.

	Numatic INTERNATIONAL LTD	MILLFIELD ROAD, CHARD, SOMERSET TA20 2GB ENGLAND
	THIS DRAWING IS COPYRIGHT AND IS THE PROPERTY OF NUMATIC INTERNATIONAL LTD. AND MUST NOT BE USED WITHOUT THEIR KNOWLEDGE NOR COMMUNICATED TO ANY PERSON OR COMPANY.	

THE EXAMPLE SHOWN DETAILS THE METHOD USED FOR IDENTIFYING CRITICAL (INSPECTION) DIMENSIONS WHERE APPLICABLE

20.0

TOLERANCES:- LINEAR: 0 DECIMAL PLACE = +/- 1.0mm ANGULAR:-
 (UNLESS OTHERWISE STATED) 1 DECIMAL PLACE = +/- 0.25mm +/- 0.5 DEGREE
 2 DECIMAL PLACES = +/- 0.05mm

TITLE:-
 (WD-0368) AUTOSAVE 12 INCH REWIND WIRING DIAGRAM (230V)

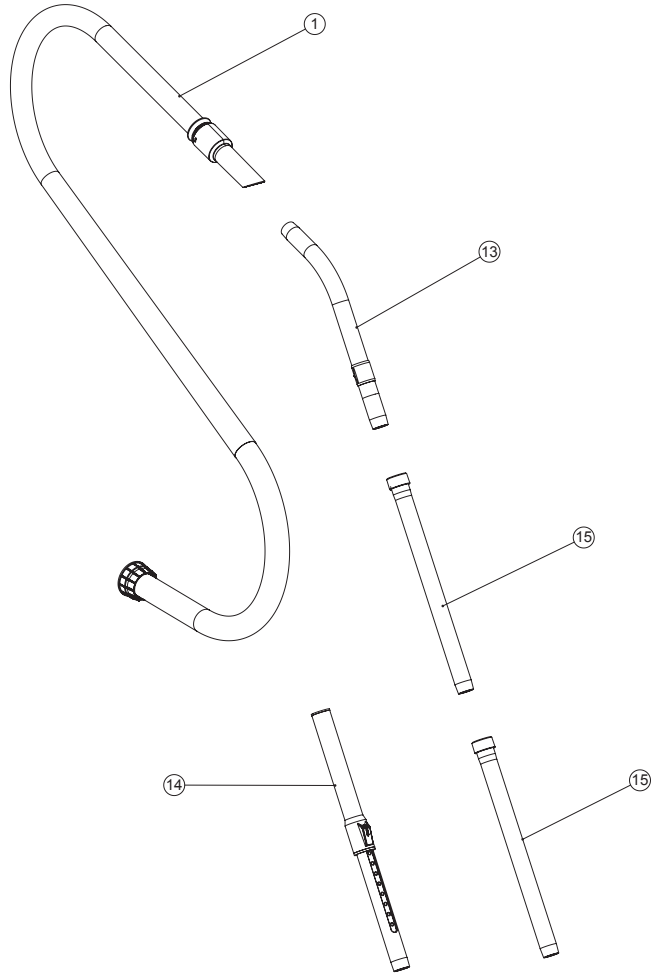
DIMNs IN MILLIMETERS	MATERIAL:-	ITEM No(s):- 123339
----------------------	-------------------	-------------------------------

A04	PCB 208428 WAS 208100 NOW 321990	mikef	IanL	16/12/10	PRINT SIZE A4	NOT TO SCALE	FINISH:-	DRG No:- WD-0368
REVISION:	CHANGE DETAIL:	DRAWN:	APPD:	DATE:				

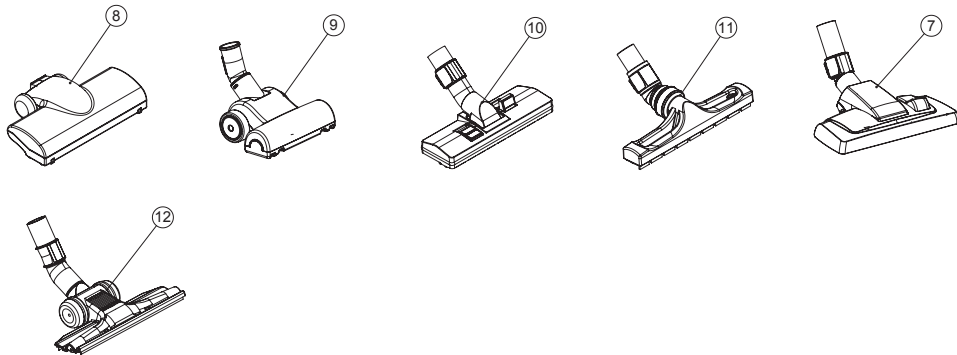
Numatic International Spare Parts

Model No: FLOOR TOOL SELECTION 1 - 12" DRY KIT & ACCESSORIES 32MM

NA
DRAWING: DRW-15709 ISS:A01
23/12/2014



FLOOR NOZZLES

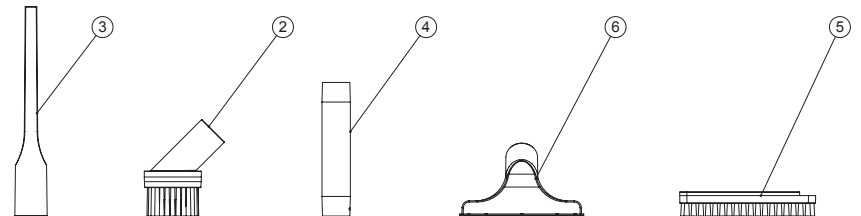


Numatic International Spare Parts

Model No: FLOOR TOOL SELECTION 1 - 12" DRY KIT & ACCESSORIES 32MM

ITEM:	PART No:	Description	QTY.	COMMENTS:
1	601240	FLO MAX CONICAL HOSE 38-32MM (2.4M)	1	
	601101	32MM PARALLEL HOSE ASSEMBLY 1.9M	1	
2	601231	DUSTING BRUSH 32MM	1	
3	601142	240MM CREVICE TOOL	1	
4	601141	TAPER ADAPTOR 32MM	1	
5	601146	SLIDE-ON BRUSH UPHOLSTERY NOZZLE 32MM	1	
6	601145	UPHOLSTERY NOZZLE 32MM	1	
7	601729	NU295 COMBINATION FLOOR NOZZLE (METAL BASE PLATE)	1	
	601829	NU295 COMBINATION FLOOR NOZZLE (PLASTIC BASE PLATE)	1	
8	601227	AIR TURBO DUEPRO (BLACK)	1	
	601226	AIR TURBO DUEPRO (RED)	1	
9	601228	250MM HAIROBRUSH FLOOR TOOL 32MM	1	
10	601572	270MM COMBINATION FLOOR TOOL	1	
11	601323	300 ProFlo Exploded	1	
12	601530	FREEFLO 290 NOZZLE 32MM	1	
13	601027	STAINLESS STEEL WAND BEND WITH VOLUME CONTROL	1	
	601025	ALUMINIUM WAND BEND WITH VOLUME CONTROL	1	
14	601045	TELESCOPIC WAND STAINLESS STEEL (32MM X 420MM X 560MM)	1	
15	601008	32MM STAINLESS STEEL EXTENSION TUBE AND COLLAR	2	
16	601024	32MM ALUMINIUM EXTNSION TUBE AND COLLAR	2	

ACCESSORIES

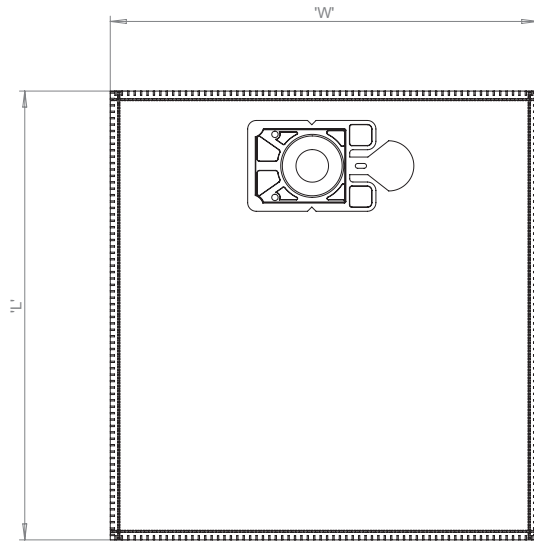


Numatic International Spare Parts

Model No: FILTER SELECTION 1 - FILTERS/BAGS DRY 12" EXPLODED DRAWING

NA
DRAWING: DRW-15712 ISS:A01
23/12/2014

FILTER BAGS

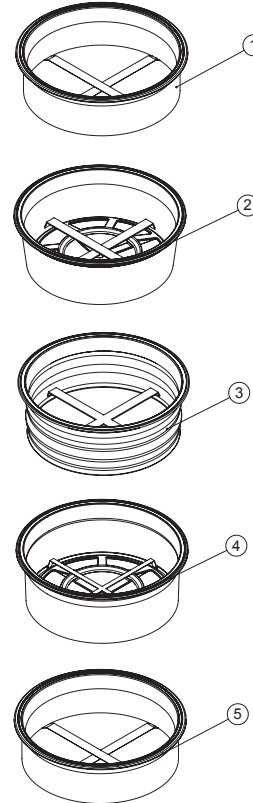


POS.	ITEM NO.	DESCRIPTION	QTY	LENGTH 'L'	WIDTH 'W'	SURFACE AREA mm ²
1	604015	NVM-1CH HEPAFLO DUST BAGS	10	420	400	159900
	604615	MASTER CARTON 8X 10 NVM-1CH	80			
2	604016	NVM-2BH HEPAFLO DUST BAGS	10	435	440	182750
	604816	MASTER CARTON 16 X 10 NVM-2BH	160			
3	604018	NVM-3AH HEPAFLO DUST BAGS	10	725	440	307450
	604818	MASTER CARTON 7 X 10 NVM-3AH	70			
4	604011	NVM-1AH HEPAFLO FILTER BAG (RSV/RSB)	10	330	400	124800

Numatic International Spare Parts

Model No: FILTER SELECTION 1 - FILTERS/BAGS DRY 12" EXPLODED DRAWING

DRY 12" FILTERS



POS.	ITEM NO.	DESCRIPTION	COMMENTS
1	207036	250/300/350 12" RED FILTER + U GASKET	
2	604311	MICROTEX FILTER	
3	604107	MICRO FRESH FILTER	
	604309	ADDITIONAL SECONDARY MICROTEX FILTER	
4	604165	TRITEX FILTER	
5	604112	SECONDARY PERMATEx FILTER	
	604136	PRIMARY FILTEXT FILTER	