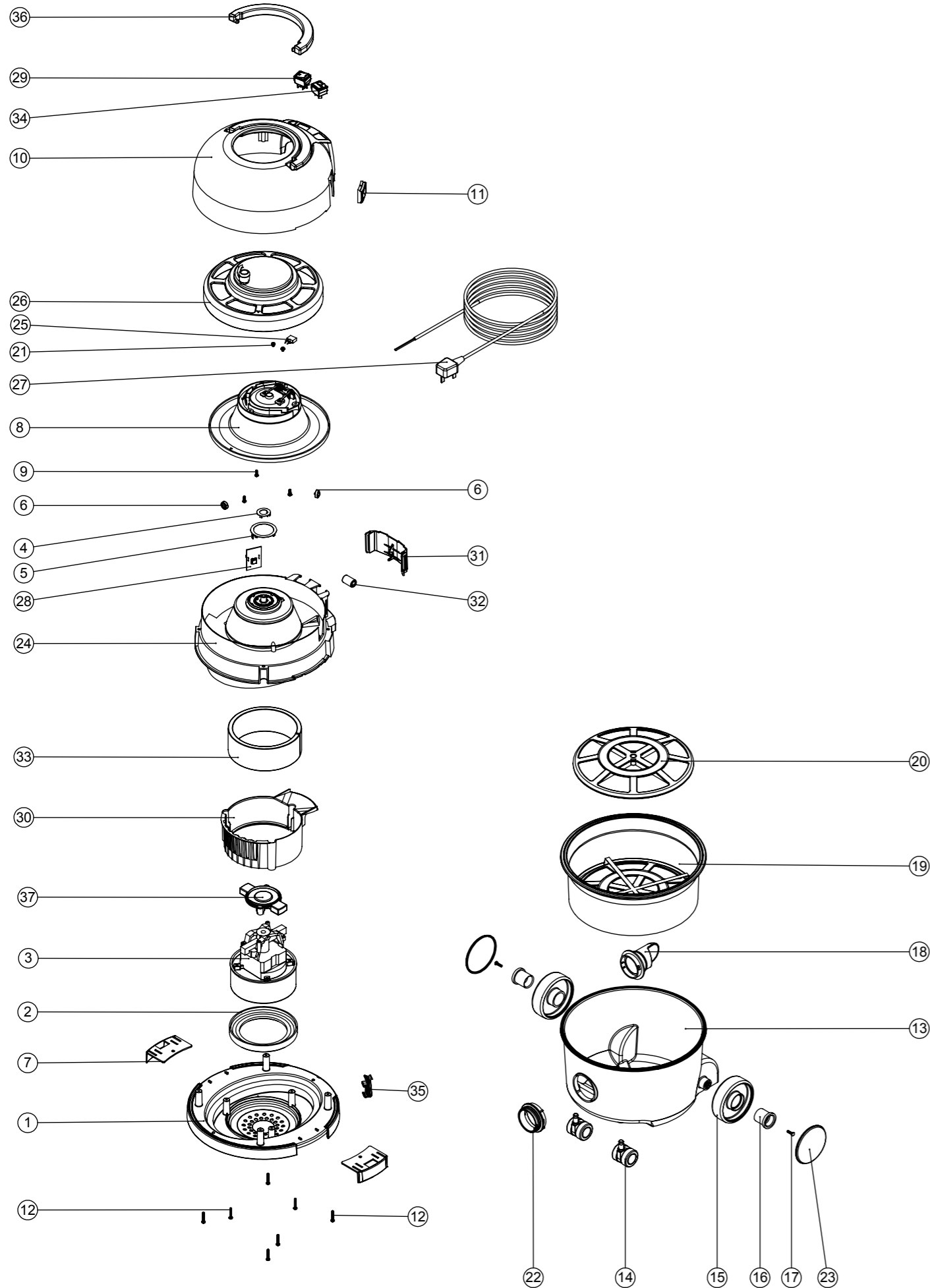


# Numatic International Spare Parts

Model No: HVR-200A / HET-200A (AUTOSAVE)

234584  
DRAWING: EXP-1012 ISS:A02  
28/01/2009

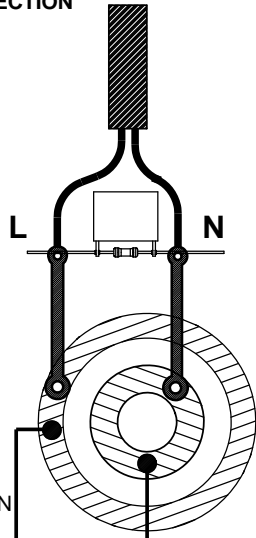
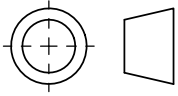


# Numatic International Spare Parts

Model No: HVR-200A / HET-200A (AUTOSAVE)

POS:	ITEM NO:	DESCRIPTION:	COMMENTS:
1	229618	BOTTOM MOTOR HOUSING (TWIN SHOT)	
2	227882	BOTTOM MOTOR GASKET	
3	205403	240V 2 STAGE THRO FLOW TAPER FAN MOTOR (DL21104T) TCO	
4	227141	INNER CONTACT RING	
5	227142	OUTER CONTACT RING	
6	227436	ROLLER WHEEL	
7	229622	TOGGLE (TWIN SHOT)	
8	227447	CABLE REEL MOULDING ASSEMBLY	
9	219101	No8 X 1/2 INCH LONG POZI PAN PLASTIITE SCREW	
10	229876	COVER + HANDLE ASSEMBLY (PRINTED WHITE HENRY LOGO + GREEN AUTOSAVE FLOWER LOGO)	INCLUDES ITEM 36 (227120)
	229877	COVER + HANDLE ASSEMBLY (PRINTED PINK HETTY LOGO + GREEN AUTOSAVE FLOWER LOGO)	INCLUDES ITEM 36 (227120)
11	237687	BLACK CABLE ENTRY	
12	219104	No8 X 1 INCH LONG POZI PAN PLASTITE SCREW	
13	227442	RED CONTAINER + FACE	
14	204000	40MM PU-TYRED BLACK TWIN WHEEL CASTOR	
15	227640	2 SHOT WHEEL ASSEMBLY	
16	227868	WHEEL HUB FOR 2 SHOT WHEEL	
17	219105	No8 X 5/8 INCH LONG POZI PAN PLASTITE SCREW	
18	227363	BAG CONNECTOR	
19	604165	12 INCH FILTER (DOUBLE BOTTOM) 160GRM SMS	
20	209200	12 INCH FILTER GRID	
21	219090	M4 X 8MM LONG POZI PAN SEMS SCREW	
22	227396	RED THREADED NECK	
23	227687	RED TRIM	
24	229620	TOP MOTOR HOUSING	
25	230096	SUPPRESSOR CAPACITOR ASSEMBLY WITH DISCHARGE RESISTOR	
26	333113	CABLE REEL COVER ASSEMBLY (C/W WINDER KNOB)	
27	236029	MAINS CABLE (10 METRE LONG X 0.75MM X 2 CORE (H05 V2V2-F) NZ PLUG)	
28	321990	NUMATIC 2 SPEED CONTROL PCB (240V) GREEN BOARD 180MB	
29	220582	GREEN ROCKER SWITCH	
30	229621	AIR GUIDE	
31	229623	SWITCH COVER	
32	230097	AXIAL FERRITE BEAD	
33	203020	POD SIDE FELT	
34	221102	RED MOMENTARY ROCKER SWITCH (BLACK BODY / RED ILLUMINATION WINDOW)	
35	229426	HENRY CLIPHOLDER	
36	227120	HANDLE	
37	229614	MOTOR PLATE BI-MATERIAL	

THIRD ANGLE PROJECTION

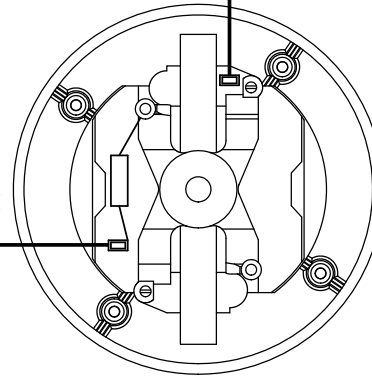


290mm BROWN LINK WIRE (321433)

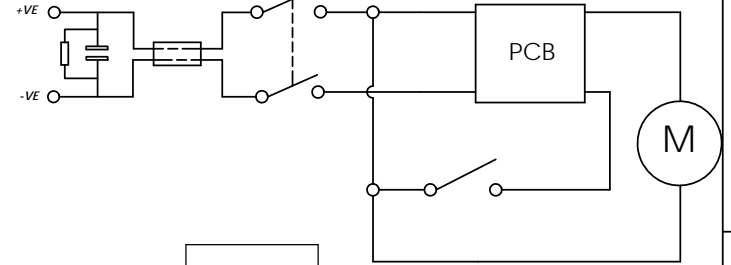
FERRITE BEAD (230097)

245mm WHITE LINK WIRE (321430)

440mm WHITE LINK WIRE (321429)



SCHEMATIC DIAGRAM



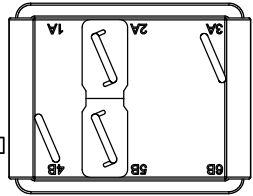
195mm BROWN LINK WIRE

PCB (321990)

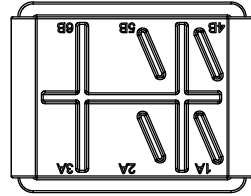
240mm BLACK LINK WIRE (321431)

100mm BROWN LINK WIRE

175mm BLUE LINK WIRE (321434)



260mm BLUE LINK WIRE (321435)



DOUBLER 100mm + 195mm BROWN LINK WIRE (321523)

MOMENTARY ROCKER SWITCH (221102)

GREEN ROCKER SWITCH (220582)

All components must be ROHS compliant.



**Numatic INTERNATIONAL LTD**

MILLFIELD ROAD, CHARD, SOMERSET TA20 2GB ENGLAND

THIS DRAWING IS COPYRIGHT AND IS THE PROPERTY OF NUMATIC INTERNATIONAL LTD. AND MUST NOT BE USED WITHOUT THEIR KNOWLEDGE NOR COMMUNICATED TO ANY PERSON OR COMPANY.

THE EXAMPLE SHOWN DETAILS THE METHOD USED FOR IDENTIFYING CRITICAL (INSPECTION) DIMENSIONS WHERE APPLICABLE

**TOLERANCES:-** LINEAR: 0 DECIMAL PLACE = +/- 1.0mm ANGULAR:- 1 DECIMAL PLACE = +/- 0.25mm +/- 0.5 DEGREE (UNLESS OTHERWISE STATED) 2 DECIMAL PLACES = +/- 0.05mm

**TITLE:-** (WD-0368) AUTOSAVE 12 INCH REWIND WIRING DIAGRAM (230V)

DIMNs IN MILLIMETERS	<b>MATERIAL:-</b>	<b>ITEM No(s):-</b> 123339
PRINT SIZE A4	<b>FINISH:-</b>	<b>DRG No:-</b> WD-0368
NOT TO SCALE		

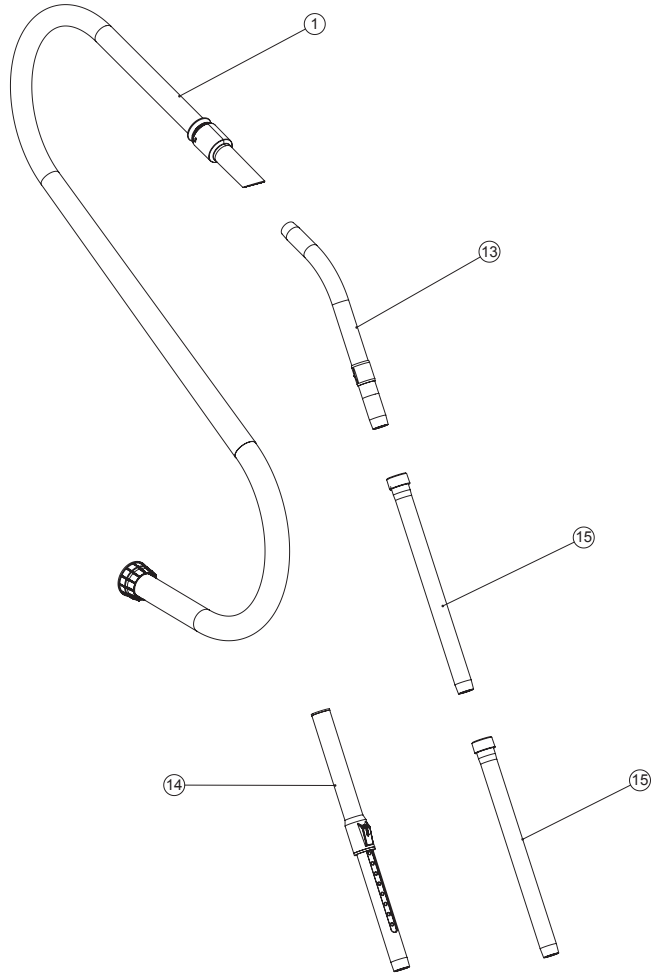
A04 PCB 208428 WAS 208100 NOW 321990 mikef lanL 16/12/10

REVISION: CHANGE DETAIL: DRAWN: APPD: DATE:

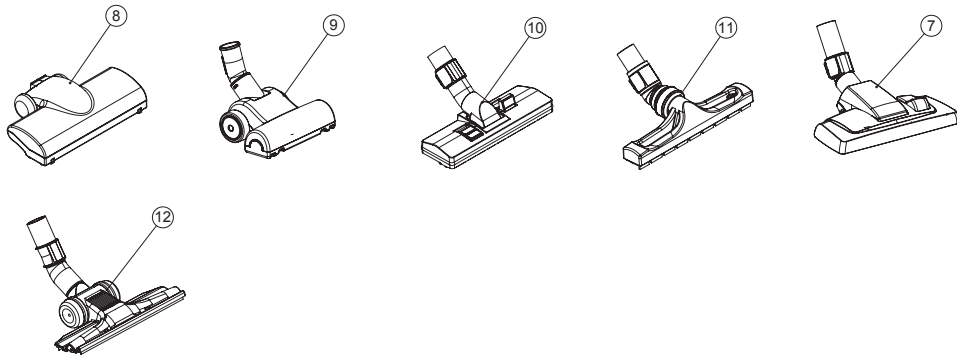
# Numatic International Spare Parts

Model No: FLOOR TOOL SELECTION 1 - 12" DRY KIT & ACCESSORIES 32MM

NA  
DRAWING: DRW-15709 ISS:A01  
23/12/2014



## FLOOR NOZZLES

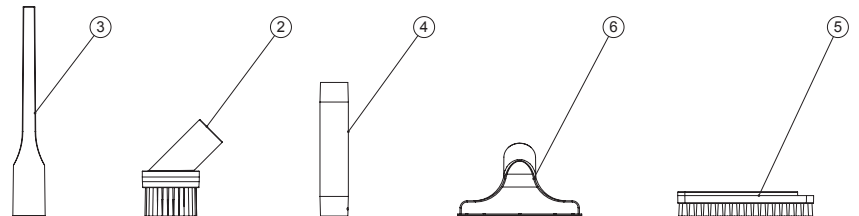


# Numatic International Spare Parts

Model No: FLOOR TOOL SELECTION 1 - 12" DRY KIT & ACCESSORIES 32MM

ITEM:	PART No:	Description	QTY.	COMMENTS:
1	601240	FLO MAX CONICAL HOSE 38-32MM (2.4M)	1	
	601101	32MM PARALLEL HOSE ASSEMBLY 1.9M	1	
2	601231	DUSTING BRUSH 32MM	1	
3	601142	240MM CREVICE TOOL	1	
4	601141	TAPER ADAPTOR 32MM	1	
5	601146	SLIDE-ON BRUSH UPHOLSTERY NOZZLE 32MM	1	
6	601145	UPHOLSTERY NOZZLE 32MM	1	
7	601729	NU295 COMBINATION FLOOR NOZZLE (METAL BASE PLATE)	1	
	601829	NU295 COMBINATION FLOOR NOZZLE (PLASTIC BASE PLATE)	1	
8	601227	AIR TURBO DUEPRO (BLACK)	1	
	601226	AIR TURBO DUEPRO (RED)	1	
9	601228	250MM HAIROBRUSH FLOOR TOOL 32MM	1	
10	601572	270MM COMBINATION FLOOR TOOL	1	
11	601323	300 ProFlo Exploded	1	
12	601530	FREEFLO 290 NOZZLE 32MM	1	
13	601027	STAINLESS STEEL WAND BEND WITH VOLUME CONTROL	1	
	601025	ALUMINIUM WAND BEND WITH VOLUME CONTROL	1	
14	601045	TELESCOPIC WAND STAINLESS STEEL (32MM X 420MM X 560MM)	1	
15	601008	32MM STAINLESS STEEL EXTENSION TUBE AND COLLAR	2	
16	601024	32MM ALUMINIUM EXTNSION TUBE AND COLLAR	2	

## ACCESSORIES

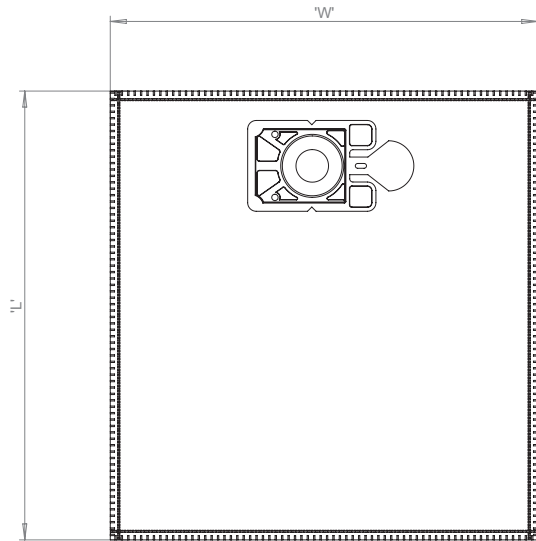


# Numatic International Spare Parts

Model No: FILTER SELECTION 1 - FILTERS/BAGS DRY 12" EXPLODED DRAWING

NA  
DRAWING: DRW-15712 ISS:A01  
23/12/2014

## FILTER BAGS

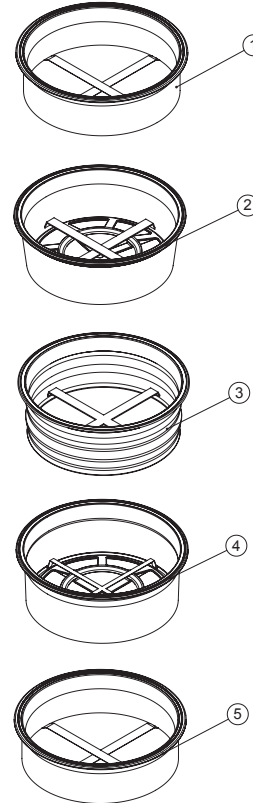


POS.	ITEM NO.	DESCRIPTION	QTY	LENGTH 'L'	WIDTH 'W'	SURFACE AREA mm <sup>2</sup>
1	604015	NVM-1CH HEPAFLO DUST BAGS	10	420	400	159900
	604615	MASTER CARTON 8X 10 NVM-1CH	80			
2	604016	NVM-2BH HEPAFLO DUST BAGS	10	435	440	182750
	604816	MASTER CARTON 16 X 10 NVM-2BH	160			
3	604018	NVM-3AH HEPAFLO DUST BAGS	10	725	440	307450
	604818	MASTER CARTON 7 X 10 NVM-3AH	70			
4	604011	NVM-1AH HEPAFLO FILTER BAG (RSV/RSB)	10	330	400	124800

# Numatic International Spare Parts

Model No: FILTER SELECTION 1 - FILTERS/BAGS DRY 12" EXPLODED DRAWING

## DRY 12" FILTERS



POS.	ITEM NO.	DESCRIPTION	COMMENTS
1	207036	250/300/350 12" RED FILTER + U GASKET	
2	604311	MICROTEX FILTER	
3	604107	MICRO FRESH FILTER	
	604309	ADDITIONAL SECONDARY MICROTEX FILTER	
4	604165	TRITEX FILTER	
5	604112	SECONDARY PERMATEx FILTER	
	604136	PRIMARY FILTEXT FILTER	