

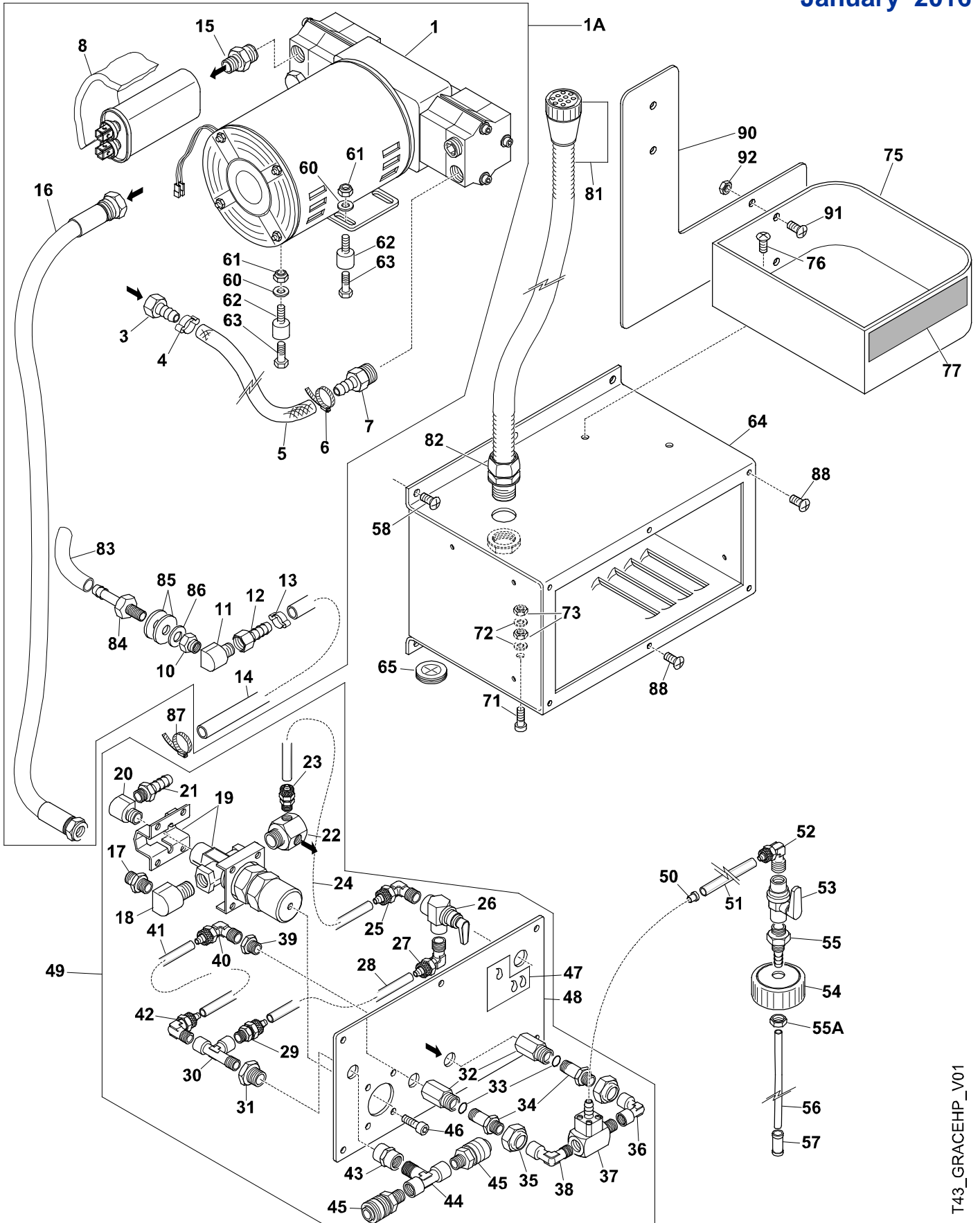
GRACE HP

July 2007

rif.	codice	descrizione	description
1	178	COPERCHIO	COVER
	178C	COPERCHIO CON GUARNIZIONE	COVER WITH GASKET
2	179	GUARNIZIONE	GASKET
3	217	INTERRUTTORE A 2 POSIZIONI	2 POSITIONS SWITCH
4	176	PANNELLO	PANEL
5	536	VITE INOX TC+ 4x10	STAINLESS STEEL SCREW TC+ 4x10
6	236	MORSETTO	CONNECTING TERMINAL
7	548	GHIERA	RING NUT
8	365	PORTAGOMMA	HOSE NIPPLE
9	334	MANICOTTO D. 38	CUFF D. 38
10	364	TUBO ASPIRAZIONE D. 38	VACUUM HOSE D. 38
11	1592	VALVOLA SCARICO 1" 1/4	DRAIN VALVE 1" 1/4
12	1612	PORTAGOMMA 1" 1/4 D.38	HOSE NIPPLE 1" 1/4 D.38
13	6094	FASCETTA CON VITE PER TUBO D.38	TIE WITH SCREW FOR D.38 TUBE
14	3582	TUBO SCARICO D.38 - L=90CM	DRAIN HOSE D.38 - L=90CM
14A	358C-HP	TUBO SCARICO COMPLETO: CODICI 1592+1612+3582+541	COMPLETE DRAIN HOSE : COD. 1592+1612+3582+541
15	542	VITE 4,2x16	SCREW 4,2x16
16	1602	CLIP SPECIALE PER TUBO D.38	SPECIAL CLIP FOR DIAM. 38 HOSE
17	6094	FASCETTA CON VITE PER TUBO D.38	TIE WITH SCREW FOR D.38 TUBE
18	1612	PORTAGOMMA 1" 1/4 D.38	HOSE NIPPLE 1" 1/4 D.38
19	155N2	COLLETORE	MANIFOLD
19A	1551	GUARNIZIONE PER COLLETORE	MANIFOLD GASKET
20	825	GUARNIZIONE MOTORE 3mm	MOTOR GASKET 3mm
20A	825	GUARNIZIONE MOTORE 3mm (S/N > 47089)	MOTOR GASKET 3mm (S/N > 47089)
	812	GUARNIZIONE MOTORE 10mm (S/N <47090)	MOTOR GASKET 10mm (S/N <47090)
21	808PA	MOTORE 3 STADI 1500W ALTA DEPRESSIONE 220-240V (S/N > 47089)	HIGH WATERLIFT 3 STAGES VACUUM MOTOR 1500W 220-240V (S/N > 47089)
	808	MOTORE 3ST.1300W 220-240V 50/60Hz (S/N <47090)	3 STAGES MOTOR 1300W 220-240V (S/N<47090)
	809PA	MOTORE 3 STADI 1400W ALTA DEPRESSIONE 110-120V (S/N > 47089)	HIGH WATERLIFT 3 STAGES VACUUM MOTOR 1400W 110-120V (S/N > 47089)
	809	MOTORE 3ST 1300W 110-120V 50/60Hz (S/N <47090)	3 STAGES MOTOR 1300W 110-120V (S/N <47090)
	810PA	MOTORE 3 STADI 1300W ALTA DEPRESSIONE 100V (S/N >)	HIGH WATERLIFT 3 ST.VACUUM MOTOR 1300W 100V (S/N >)
	810	MOTORE 3 ST. 1300W 100V 50/60Hz (S/N <)	3 STAGES MOTOR 1300W 100V (S/N <)
22	363	MANICOTTO	CUFF
23	234	CONNETTORE IN PLASTICA	PLASTIC CONNECTOR
	250	FASTON MASCHIO 6,3mm	MALE FASTON - 6,3mm
24	152AZ	SERBATOIO INFERIORE AZZURRO	BLUE LOWER TANK
25	259-GRACEHP	CONNETTORE A PANNELLO + CAVETTI	SOCKET WITH WIRES
28	538	VITE TC+ 3,9x13	SCREW TC+ 3,9x13
44	714	INNESTO RAPIDO FEMMINA	QUICK DISCONNECT FEMALE
45	540	RONDELLA OTTONE	BRASS WASHER
46	147	RONDELLA NEOPRENE	NEOPRENE WASHER
47	419N	DISTANZIALE-SUPPORTO PER ALBERO	PILLOW BLOCK
48	594	RONDELLA 8x24 Zn	WASHER 8x24 Zn
49	600	VITE TE 8x25	SCREW TE 8x25
51	418	ALBERO	SHAFT
52	422	RUOTA	WHEEL
53	5632	RONDELLA PIANA 6x30x2 Zn	WASHER 6x30x2 Zn
54	582	VITE TE 6x14 INOX	SCREW TE 6x14 INOX
55	536	VITE INOX TC+ 4x10	STAINLESS STEEL SCREW TC+ 4x10
56	180	PANNELLO DI PROTEZIONE	LOWER PANEL
57	115.1	RUOTA DIAM.100	WHEEL DIAM.100
	597	RONDELLA 20x40x3	WASHER DIAM. 20x40x3
	540	RONDELLA PIANA OTTONE DIAM. 10x20x0.8	BRASS WASHER DIAM. 10x20x0.8

MACCHINA CON SPRUZZO, RISCIAQUO, ASPIRAZIONE
MACHINE SPRAYING, RINSING AND VACUUMING
MOD. GRACEHP
MOD. GRACEHP
TAVOLA 42 2/2
TABLE 42 2/2

rif	codice	descrizione	description
58	545	VITE	SCREW
59	142	GANCIO	COUPLER
59A	167	PIASTRINA	PLATE
60	745	TUBO EXTRAFLEX	EXTRAFLEX PIPE
61	702D	PORTAGOMMA	HOSE NIPPLE
62	747	ZAVORRA	BALLAST
63	608	FILTRO ACQUA	FILTER
64	215	CAVO 3xAWG14 L.15m. SJT-CSA SPINA USA	CABLE 3xAWG14 L.15m. SJT-CSA USA PLUG
65	295	PASSACAVO CON GHIERA	FAIRLEAD WITH NUT
66	151AZ	SERBATOIO SUPERIORE AZZURRO	BLUE UPPER TANK
67A	131	GOMITO	ELBOW
67B	1312	GOMITO PER GALLEGGIANTE GRACE + GUARNIZIONE	ELBOW FOR GRACE FLOATER, WITH GASKET
67C	538I	VITE AUTOFIL. TC+ 3.9x19 INOX	SCREW TC+ 3,9x19 INOX
68	560	VITE TC+ 5x30 INOX	SCREW STAINLESS STEEL TC+ 5x30
69	517I	RONDELLA 5x15 INOX	STAINLESS STEEL WASHER 5x15
70	824	VALVOLA MOTORE	MOTOR VALVE
71	183	GOMITO	ELBOW
72	1812	ETICHETTA PANNELLO SUPERIORE GRACEHP	LABEL FOR GRACEHP UPPER TANK
73	11638	FILTRO IN PLASTICA	PLASTIC FILTER
73A	2025	FILTRO PPI30 D.44 MAXI/GRACE/SHARON	FILTER PPI45 D.44
74	109	PIASTRINA PER PRESSACAVO	FAIRLEAD PLATE
75	2025	FILTRO PPI30 D.44 MAXI/GRACE/SHARON	FILTER PPI45 D.44
76	57504I	VITE TE 4x12 INOX	SCREW TE 4x12 INOX
77	5210	RONDELLA DENTELLATA EST. DIAM 4 Zn	LOCKING WASHER DIAM. 4 Zn
78	523	DADO ES. 4 MA UNI 5587 OTTONE	NUT DIAM. 4mm
79	1713	PIASTRINA PER GALLEGGIANTE MAXIFOAM	PLATE FOR MAXI FOAM FLOATER
80	1707	GALLEGGIANTE SFERICO CON SEDE PER VITE	SPHERICAL FLOATER
81	58206W	VITE TE 6x8 1/4X3/8 WHITWORTH	SCREW TE 6x8 1/4X3/8 WHITWORTH
82	52106I	RONDELLA DENTELLATA EST .DIAM 6 INOX	LOCKING WASHER DIAM. 6 INOX
83	17041	CORPO MOBILE PER GALLEGGIANTE GRACE	MOVING PART FOR GRACE FLOATER
84	17031	CORPO FISSO PER GALLEGGIANTE GRACE	FIXED PART FOR GRACE FLOATER



T43_GRACEHP_V01

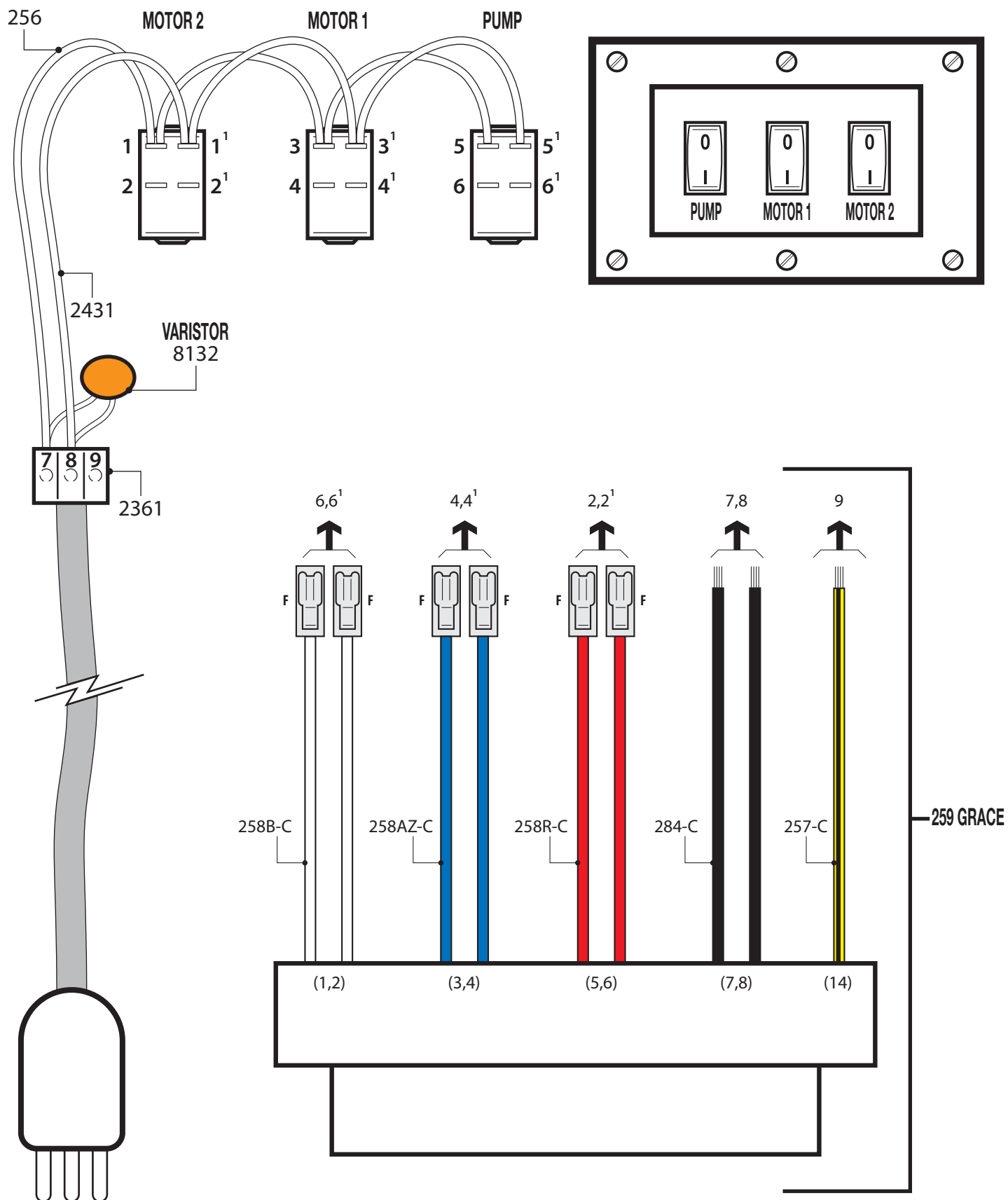
**LAVAMOQUETTE AD ALTA PRESSIONE MOD. GRACEHP-SILENT (N.SERIE N>90.000)
 HIGH-PRESSURE CARPET EXTRACTOR MOD. GRACEHP-SILENT (SERIAL N>90.000)**
**TAVOLA 43 1/2
 TABLE 43 1/2**

rif	codice	descrizione	description
1	646400	POMPA PUMPTEC 230V 400PSI	PUMPTEC PUMP 230V 400 PSI
1A	646400C-HP	POMPA PUMPTEC 230V 400PSI COMPL. FT30/GR.HP	PUMPTEC PUMP 230V 400 PSI COMPLETE FOR FT30/GR.HP
3	6991	PORTAGOMMA F.1/4 DIAM.8	HOSE NIPPLE F. 1/4 DIAM.8
4	609	FASCETTA	TIE
5	343016	TUBO RAGNO 8x14 L=380mm	RAGNO PIPE 8x14 L=380mm
6	6092	FASCETTA CON VITE	TIE WITH SCREW
7	6996	PORTAGOMMA M.3/8 DIAM.9	HOSE NIPPLE M.3/8 DIAM.9
8	1841	TUBO IN GOMMA D.35x53 L=100mm	RUBBER PROTECTION D.35x53 L=100mm
10	7671	RACCORDO RIDUZIONE A4/Z F.1/8 - M.1/4	COUPLING A4/Z F.1/8 - M. 1/4
11	62614-NPT	RACCORDO GOMITO MF 1/4-1/4 NPT	ELBOW COUPLING MF 1/4-1/4 NPT
12	6991	PORTAGOMMA F.1/4 DIAM.8	HOSE NIPPLE DIAM. 8, ATT. F.1/4"
13	609	FASCETTA	TIE
14	343015	TUBO RAGNO 8x14 L=570mm	RAGNO PIPE 8x14 L=570mm
15	73821	RACCORDO NIPPLO 3/8 NPT-1/4GAS CILINDR.	NIPPLE 3/8 NPT - 1/4GAS CILINDR.
16	343091C	TUBO NERO L450mm F1/4-F1/4 GAS-OTT.	HIGH PRESSURE PIPE L450mm F1/4-F1/4 GAS-OTT.
17	764	RACCORDO NIPPLO A1 1/4-1/4 CILINDRICO	COUPLING A1 1/4-1/4
18	62614-NPT	RACCORDO GOMITO MF NPT-NPT 1/4-1/4	ELOBOW MF NPT-NPT 1/4 1/4
19	647400	BY-PASS OTTONE 3VIE PUMPTEC400+STAFFE	BY PASS PUMPTECC 400 + BRACKET
20	62614-NPT	RACCORDO GOMITO MF NPT-NPT 1/4-1/4	ELOBOW MF NPT-NPT 1/4 1/4
21	6994	PORTAGOMMA M.1/4 -9 CILINDRICO A19	HOSE NIPPLE M. 1/4 DIAM.9
22	62614T-NPT	RACCORDO GOMITO 3 VIE MFF 1/4NPT	SPECIAL COUPLING - 3WAYS ELBOW MFF 1/4NPT
23	616	RACCORDO DIRITTO C1 8/6-1/8	COUPLING C1 8/6-1/8
24	74001	TUBO RILSAN H.R. 6/8 L=160mm	RILSAN HOSE H.R. 6/8 L=160mm
25	605	RACCORDO GOMITO C5 M.1/8 PER TUBO 6/8	ELBOW COUPLING C5 M.1/8 FOR 6/8 PIPE
26	6172	RUBINETTO A LEVA A PANNELLO 90° 1/8	PANEL ON-OFF VALVE 90° 1/8
27	605	RACCORDO GOMITO C5 M.1/8 PER TUBO 6/8	ELBOW COUPLING C5 M.1/8 FOR 6/8 PIPE
28	74003	TUBO RILSAN H.R. 6/8 L=150mm	RILSAN HOSE H.R. 6/8 L=150mm
29	616	RACCORDO DIRITTO C1 8/6-1/8	COUPLING C1 8/6-1/8
30	72232	RACCORDO A T FFM A13 1/8	COUPLING T FFM A13 1/8
31	7671	RACCORDO RIDUZIONE A4/Z M.1/4 F.1/8	COUPLING A4/Z M.1/4 - F.1/8
32	714N-HP	RACCORDO F1/4 PER ATTACCO RAPIDO DEMA	COUPLING F ¼ FOR INJECTOR CONECTION
33	1373	OR TENUTA PER 714N E ANTIG	O-RING FOR 714N
34	698	INNESTO AUTOM. M.ATT.M. R6 8-1/8	AUTOMATIC COUPLING M.ATT.M. R6 8-1/8
35	761	GHIERA IN OTTONE 3/8" CON FORO 14mm	NUT 3/8" WITH HOLE DIAM. 14mm
36	62615	RACCORDO GOMITO FF 1/8"	ELBOW COUPLING FF 1/8"
37	90452	INIETTORE DETERGENTE FF 1/8	CHEMICAL INJECTOR FF 1/8
	90453-03	BUSHING INTERNO 0,3	INTERNAL BUSHING 0,3
38	626	RACCORDO GOMITO MF A10 1/8-1/8	ELBOW COUPLING MF A10 1/8-1/8
39	684	RACCORDO RIDUZIONE A6 F1/4-F1/8	COUPLING A6 F1/4-F1/8
40	605	RACCORDO GOMITO C5 M.1/8 PER TUBO 6/8	ELBOW COUPLING C5 M.1/8 FOR 6/8 PIPE
41	74002	TUBO RILSAN H.R. 6/8 L=120mm	RILSAN HOSE H.R. 6/8 L=120mm
42	605	RACCORDO GOMITO C5 M.1/8 PER TUBO 6/8	ELBOW COUPLING C5 M.1/8 FOR 6/8 PIPE
43	76214	RACCORDO DIRITTO FF A3 1/4	COUPLING FF A3 1/4
44	72251	RACCORDO A T FMF 1/4 A12	COUPLING T FMF 1/4 A12
45	687-T	INNESTO RAPIDO F. ATT.M.1/4 (02) PARKER	QUICK DISCONNECT FEMALE, ATT. M. 1/4
46	574	VITE TC BRUGOLA 6x14	SCREW TC BRUGOLA 6x14
47	15731	ETICHETTA POWERTEC CON 2 GOCCE	POWERTEC LABEL - 2 DROPS
48	49124	PANNELLO REGOLAZIONE GR.HP INIETT. EST	REGULATION PANEL FOR GRACEHP
49	PA-GRACEHP	PANNELLO COMPLETO GRACEHP	COMPLETE PANEL FOR GRACEHP
50	1203-RED	TIP DEMA ROSSA PER SMARTKIT	RED TIP PER SMARTKIT
51	73518	TUBO EXTRAFLEX 6/8 L=60cm	EXTRAFLEX PIPE 6/8 L=60cm

**LAVAMOQUETTE AD ALTA PRESSIONE MOD. GRACEHP-SILENT(N.SERIE>90.000)
 HIGH-PRESSUR CARPET EXTRACTOR MOD. GRACEHP-SILENT (SERIAL N>90.000)**
**TAVOLA 43 2/2
 TABLE 43 2/2**

rif	codice	descrizione	description
52	605	RACCORDO GOMITO C5 M.1/8 PER TUBO 6/8	ELBOW COUPLING C5 M.1/8 FOR 6/8 PIPE
53	6171	RUBINETTO A LEVA F-F1/8"	VALVE F-F1/8"
54	1202	TAPPO FORATO PER TANICA DET.5 LITRI	CAP WITH HOLE FOR CHEMICAL BOTTLE - 5 LITERS
55	12022	RACCORDO DRITTO TAPPO DETERG.M.1/8"	COUPLING FOR CHEMICAL CAP M.1/8"
55A	54818	GHIERA 1/8" x 14 H=4mm OTTONE	NUT 1/8" x 14 H=4mm
56	74011	TUBO RILSAN 6/8 L = 290mm (EUROPA)	RILSAN PIPE 6/8 L = 290mm (EUROPE)
57	6081	FILTRO PER DETERGENTE (EUROPA)	FILTER FOR CHEMICAL (EUROPE)
58	536	VITE TC+ 4x10 INOX	SCREW TC+ 4x10 INOX
60	5631	RONDELLA PIANA 6x12x1,5 Zn	WASHER 6x12x1,5 Zn
61	562A	DADO AUTOBLOCCANTE DIAM. 6 mm	LOCKING NUT DIAM. 6 mm
62	4905.4	DISTANZIALE M6 MF,H=20,FISS.PIASTRA FOAM	ANTIVIBRATION SUPPORT M6 MF,H=20
63	58206I	VITE TE 6x8 UNI 5739 INOX	SCREW TE 6x8 UNI 5739 INOX
64	49132N	PANNELLO VANO POMPA GRACEHP C/PIASTRA	PANEL FOR GRACEHP PUMP WITH FIXING PLATE
65	1631	BOCCOLA PICCOLA PER RAGNO 8x14	BUSH 8x14
71	551	VITE TC+ 4x16 INOX	SCREW TC+ 4x16 INOX
72	5210	RONDELLA DENTELLATA EST. DIAM 4 Zn	LOCKING WASHER DIAM. 4
73	523	DADO ES. 4 MA UNI 5587 OTTONE	NUT DIAM.4
75	4918	CONTENITORE TANICA DETERG. GRACE HP	CONTAINER FOR CHEMICAL BOTTLE FOR GRACEHP
76	575I	VITE TE 5x12 INOX	SCREW TE 5x12 INOX
77	1572	ETICHETTA INFERIORE GRACE HP	LOWER PANEL LABEL FOR GRACE HP
81	261-GRACEHP	GUAINA GRACE + CAVETTI +260+265 (425mm)	COMPLETE CABLE SHEAT + ELECTRICAL CONNECTOR
82	262C	RACCORDO GUAINA-PANNELLO GRACE + GHIERA	TERMINAL + NUT FOR CABLE SHEAT DIAM. 16
83	73523	TUBO EXTRAFLEX 6/8 L=30cm	EXTRAFLEX PIPE 6/8 L=30cm
84	702D	RACCORDO PER FILTRO ACQUA SERENA E GRACE	HOSE NIPPLE
85	147	RONDELLA NEOPRENE	NEOPRENE WASHER
86	540	RONDELLA OTTONE	BRASS WASHER
87	6092	FASCETTA CON VITE PER RAGNO 8x14 HP	TIE WITH SCREW FOR HOSE RAGNO 8x14 HP
88	536	VITE TC+ 4x10 INOX	SCREW TC+ 4x10 INOX
90	47235	PIASTRA FISSAGGIO HEATER SU GRACEHP-SIL	PLATE FOR FIXING THE HEATER ON GRACHEHP-SIL
91	534	VITE TC BRUGOLA BOMBATA 5x10 Brunita	SCREW TC BRUGOLA BOMBATA 5x10 Brunita
92	525	DADO D.5	NUT D.5

Electrical sketch of Grace (230 Volt) UPPER TANK



Electrical sketch of Grace (230 Volt) LOWER TANK

