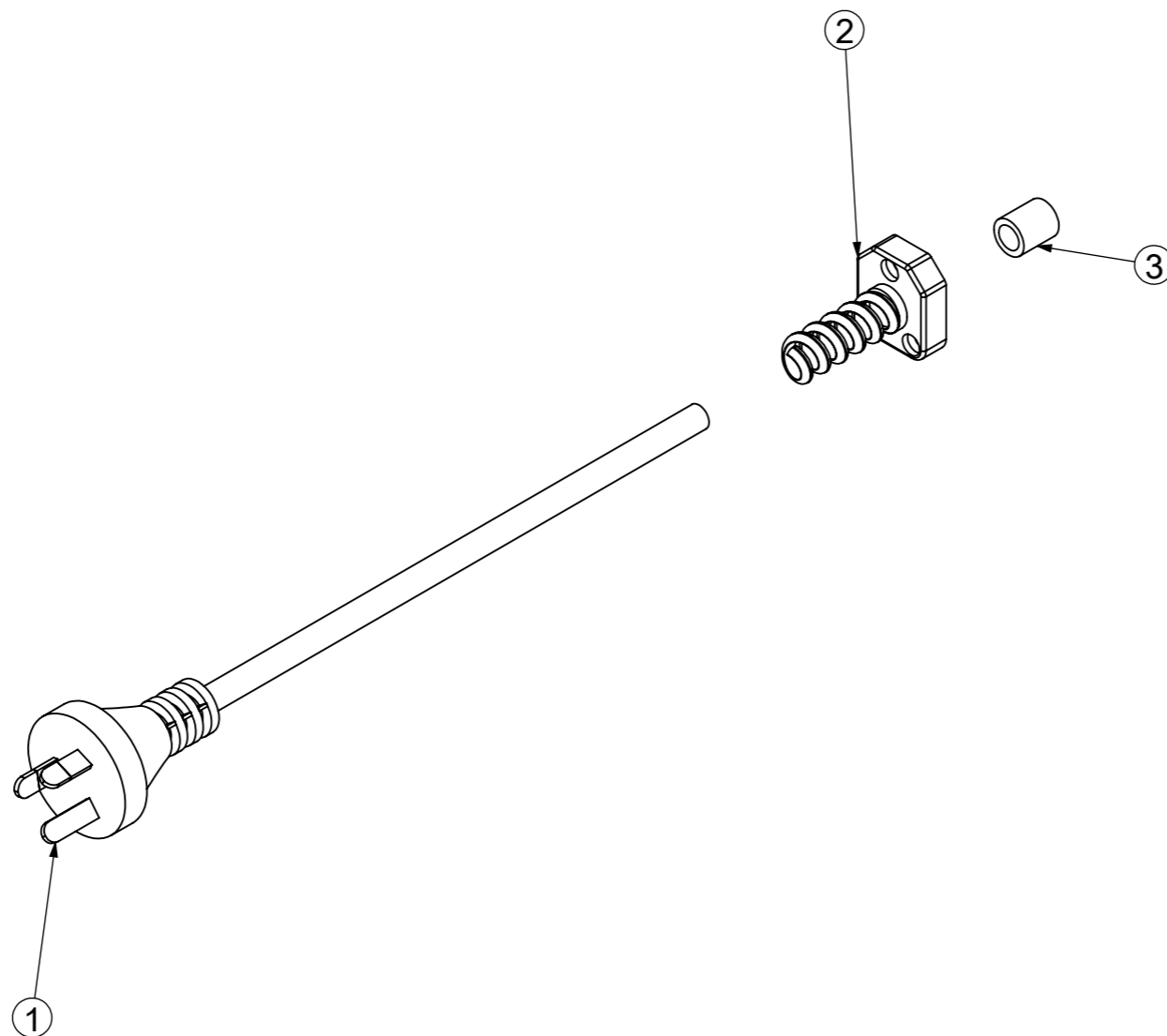
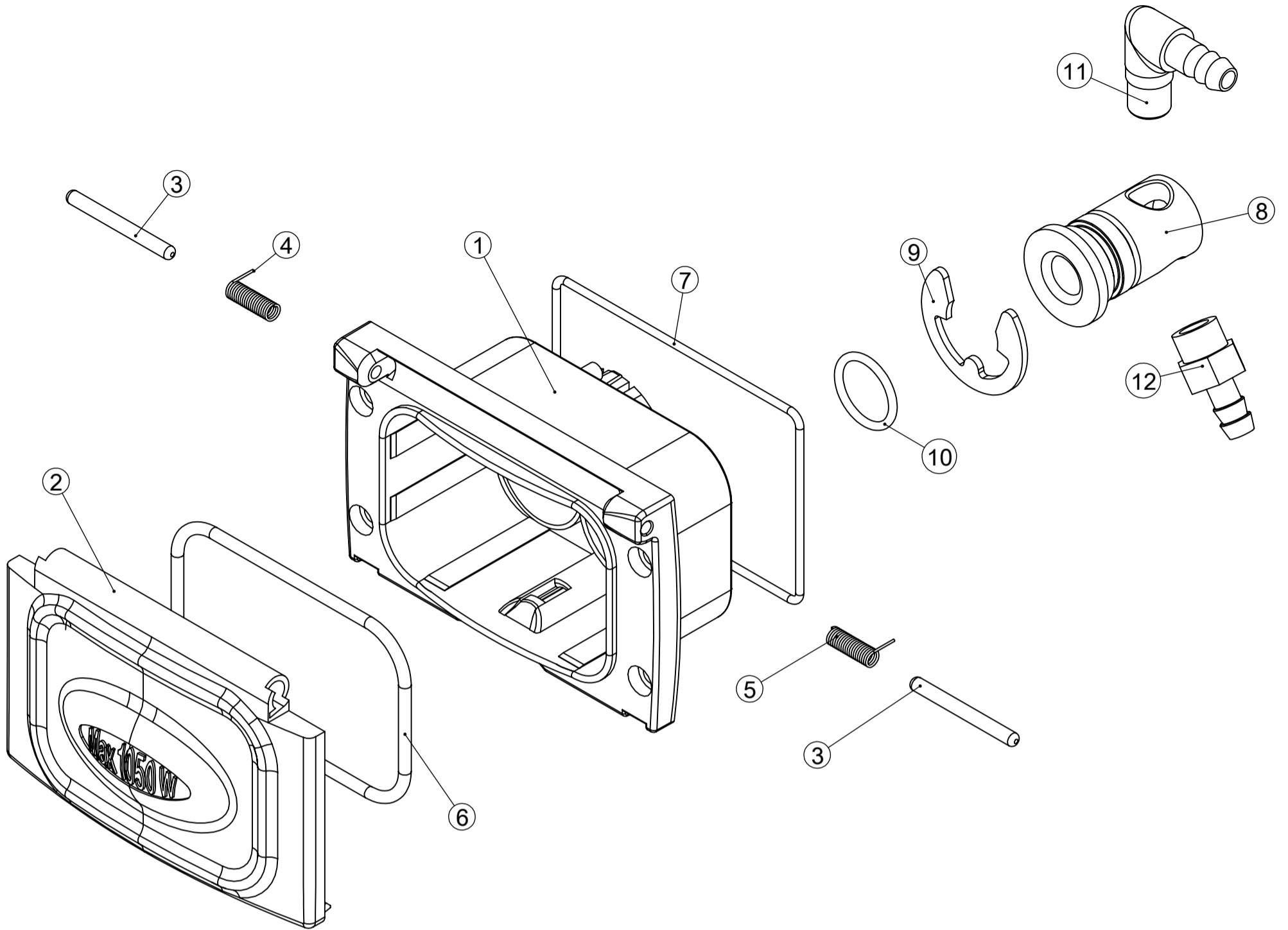


0 PRIMA EMISSIONE		DATE	APPROVED BY
REV.	MODIFY DESCRIPTION		
DESCRIPTION SP4 NMBL C/R LE 5,5 7024/CARB NZ LED		 <small>GEN. TOL. UNI EN ISO 22768 MK ±0.1 ±0.2 ±0.3 ±0.5 ±0.8 TOLERANCES FOR ANGLES ±1° TOLERANCES FOR DRIFT ANGLES ±15'</small>	
ENG DESCRIPTION		<small>PIAZZETTA ALBERI S.p.A. 36060 ROMANO D'EGGELINGO VI - ITALY</small>	
PDM CODE P0B2210240	REV. 0	CODE AA18000708925700	MATERIAL
DRAWN BY Andrea Amoretti	DATE 06/12/2021	APPROVED BY	DATE
COLOUR	HEAT TREATMENT	SURFACE TREATMENT	REFERENCES DIE
		SCALE 1:2	(WEIGHT (g)) 6972,8
		A1	

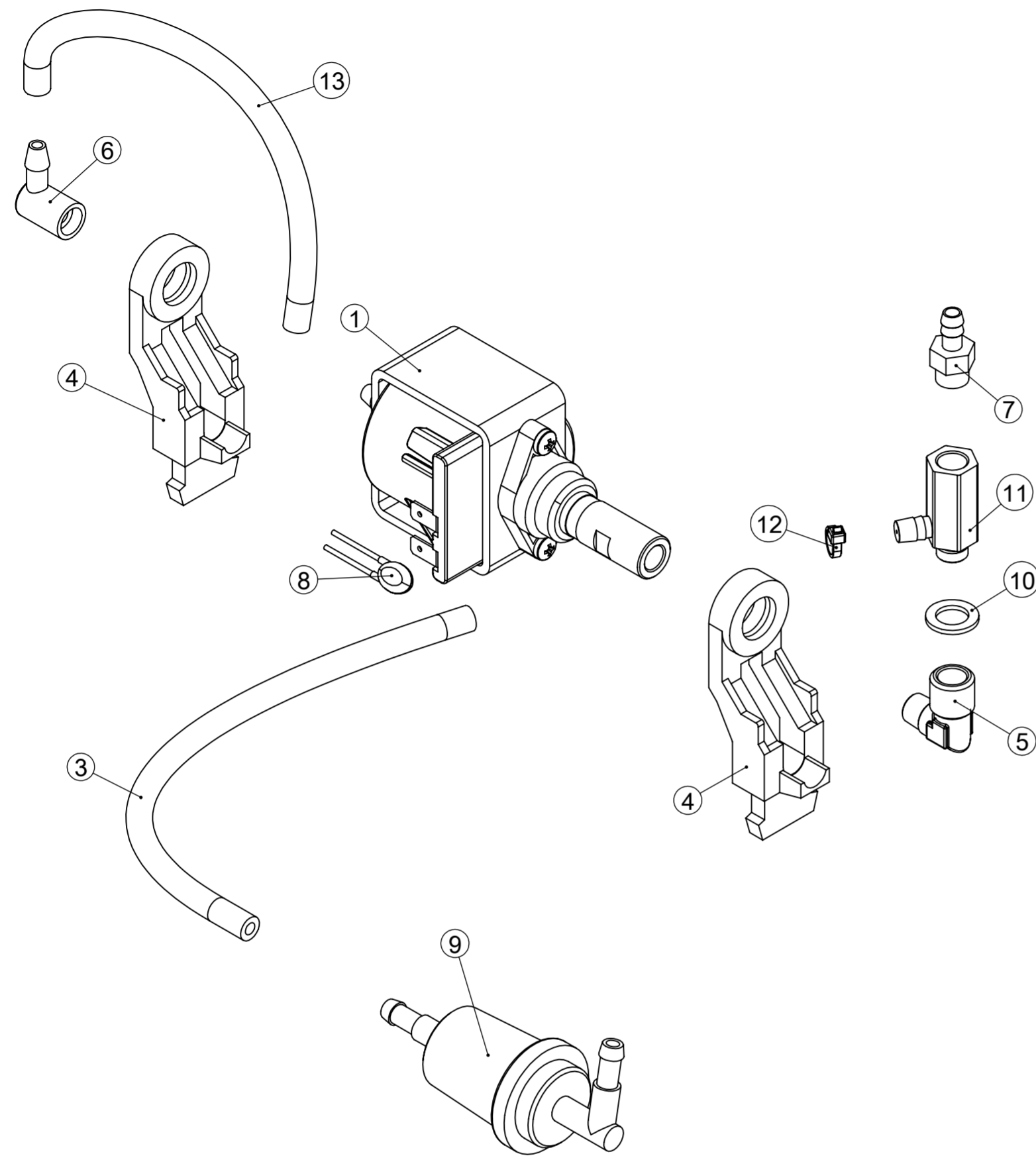
THIS DRAWING IS PROPERTY OF TRAMPEX S.P.A. COMPANY. ITS DISCLOSURE, EVEN PARTIAL, WITHOUT WRITTEN AUTHORIZATION, IS PROHIBITED BY LAW.





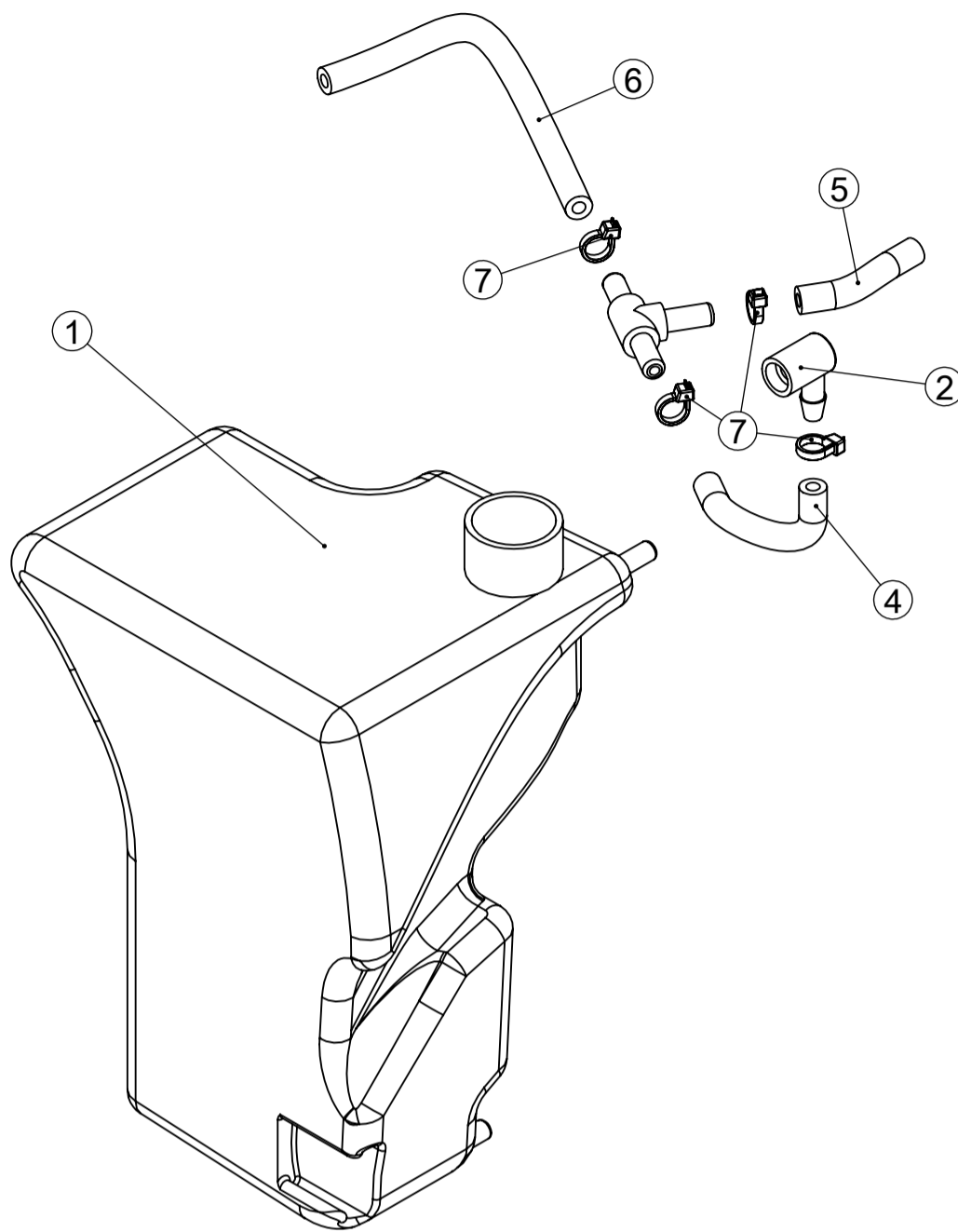
0		PRIMA EMISSIONE		DATE	APPROVED BY										
REV.	MODIFY DESCRIPTION			DATE	APPROVED BY										
DESCRIPTION				GEN. TOL. UNI EN ISO 22768 mK											
CAVO AL. AUSTRALIA 3X1,5 6M+PASS+GOM14 S				<table border="1"> <tr> <td>0.5-6</td> <td>6-30</td> <td>30-120</td> <td>120-400</td> <td>400-1000</td> </tr> <tr> <td>±0.1</td> <td>±0.2</td> <td>±0.3</td> <td>±0.5</td> <td>±0.8</td> </tr> </table>		0.5-6	6-30	30-120	120-400	400-1000	±0.1	±0.2	±0.3	±0.5	±0.8
0.5-6	6-30	30-120	120-400	400-1000											
±0.1	±0.2	±0.3	±0.5	±0.8											
ENG DESCRIPTION				TOLERANCES FOR ANGLES ±1° TOLERANCES FOR DRAFT ANGLES ±10°											
ass.y power cord aus 3x1,5 6m															
PDM CODE	REV.	CODE	MATERIAL	CER	WEIGHT (g)										
A0100038	0	49920103020010			41,14										
DRAWN BY	DATE	APPROVED BY	DATE	SCALE											
Andrea Amoretti	03/07/2020			1:2	A3										
COLOUR	HEAT TREATMENT	SURFACE TREATMENT	REFERENCES DIE												



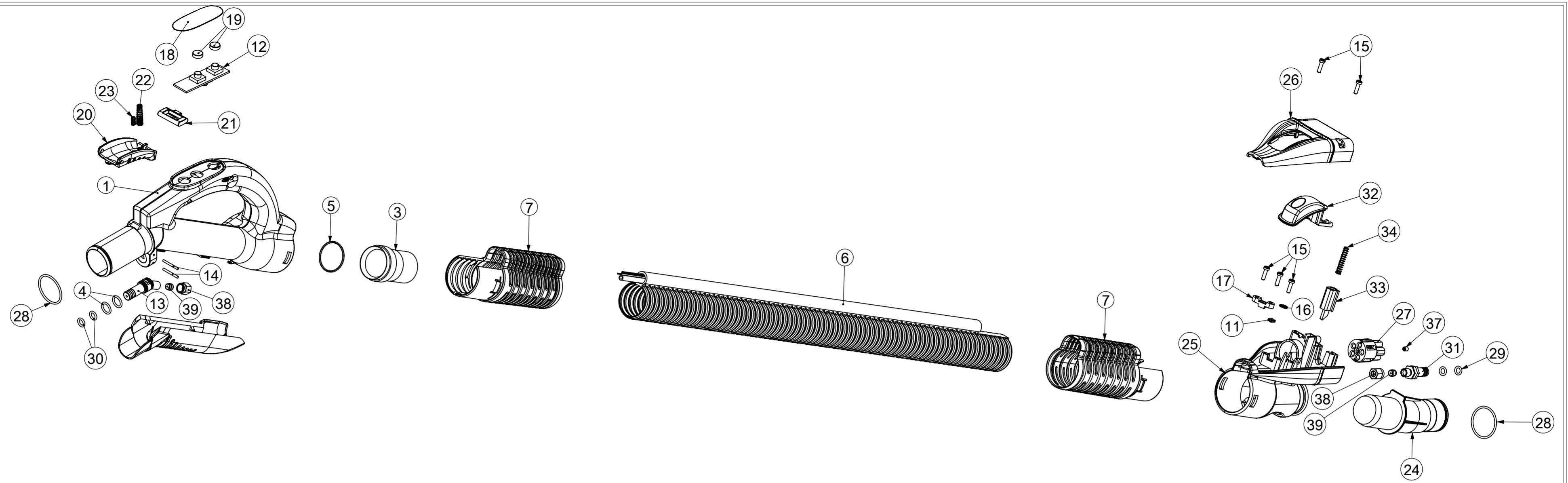
0		PRIMA EMISSIONE		DATE	APPROVED BY
REV.	MODIFY DESCRIPTION			DATE	APPROVED BY
DESCRIPTION				GEN. TOL. UNI EN ISO 22768 mK	
ASS.CORPO PRESA MBL V+A OT SP4 MET				0.5-6	6-30
ENG DESCRIPTION				30-120	120-400
ass.y socket body mbl Steam&Vac brass sp4 met				400-1000	400-1000
PDM CODE				TOLERANCES FOR ANGLES ±1°	
A0300044	REV.	CODE	MATERIAL	TOLERANCES FOR DRAFT ANGLES ±10°	
	0	20109066150		CER	WEIGHT (g)
DRAWN BY		DATE	APPROVED BY	SCALE	A3
Andrea Amoretti		19/02/2018		1:2	
COLOUR		HEAT TREATMENT	SURFACE TREATMENT	REFERENCES DIE	



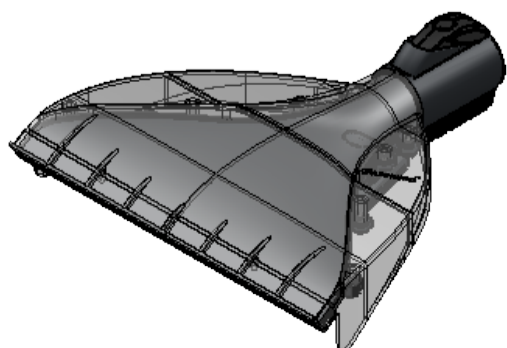
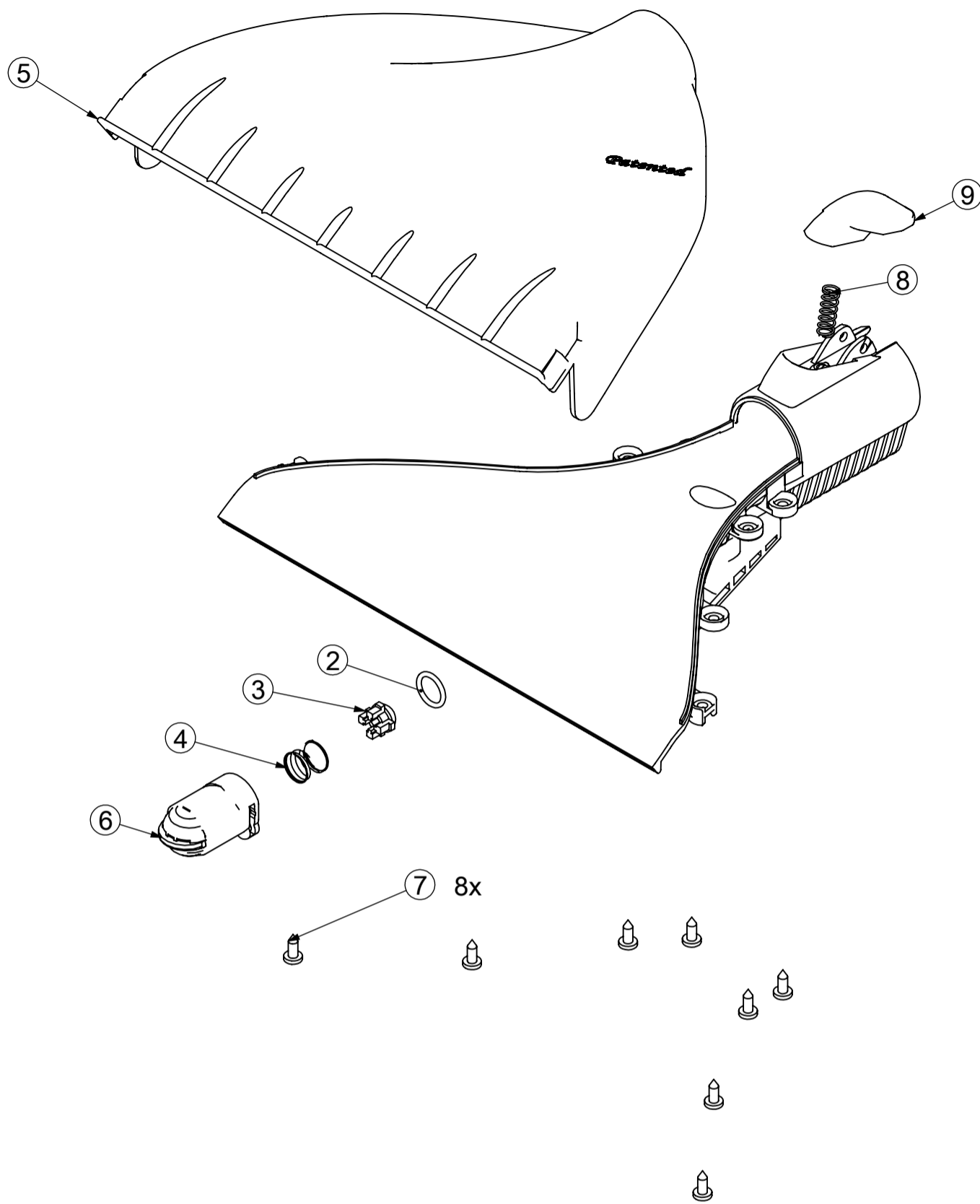
0		PRIMA EMISSIONE							
REV.	MODIFY DESCRIPTION					DATE	APPROVED BY		
DESCRIPTION						 S.p.A. PIAZZETTA ALBERE 3/4, 36060 ROMANO D'EZZELINO VI - ITALY		GEN. TOL. UNI EN ISO 22768 mK 0,5-8 8-30 30-120 120-400 400-1000 ±0.1 ±0.2 ±0.3 ±0.5 ±0.8 <small>TOLERANCES FOR ANGLES ±1° TOLERANCES FOR DRAFT ANGLES ±10°</small>	
ENG DESCRIPTION						CER		WEIGHT (g)	
PDM CODE	REV.	CODE	MATERIAL				1015,35		
A0600004	0	49923001000100							
DRAWN BY		DATE	APPROVED BY		DATE	SCALE	 A2		
Andrea Amoretti		19/02/2018				1:2			
COLOUR		HEAT TREATMENT		SURFACE TREATMENT		REFERENCES DIE			
<small>THIS DRAWING IS PROPERTY OF TPA IMPEX S.P.A. COMPANY. ITS DISCLOSURE, EVEN PARTIAL, WITHOUT WRITTEN AUTHORIZATION, IS PROHIBITED BY LAW.</small>									



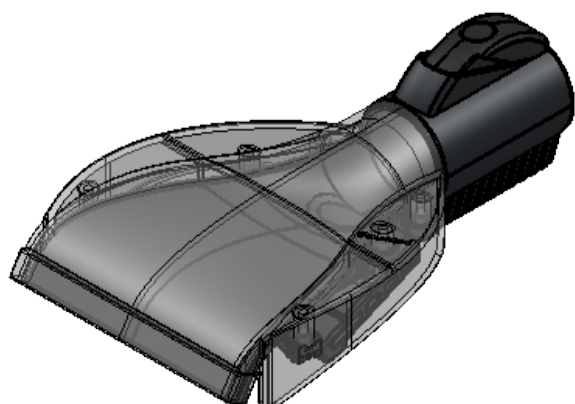
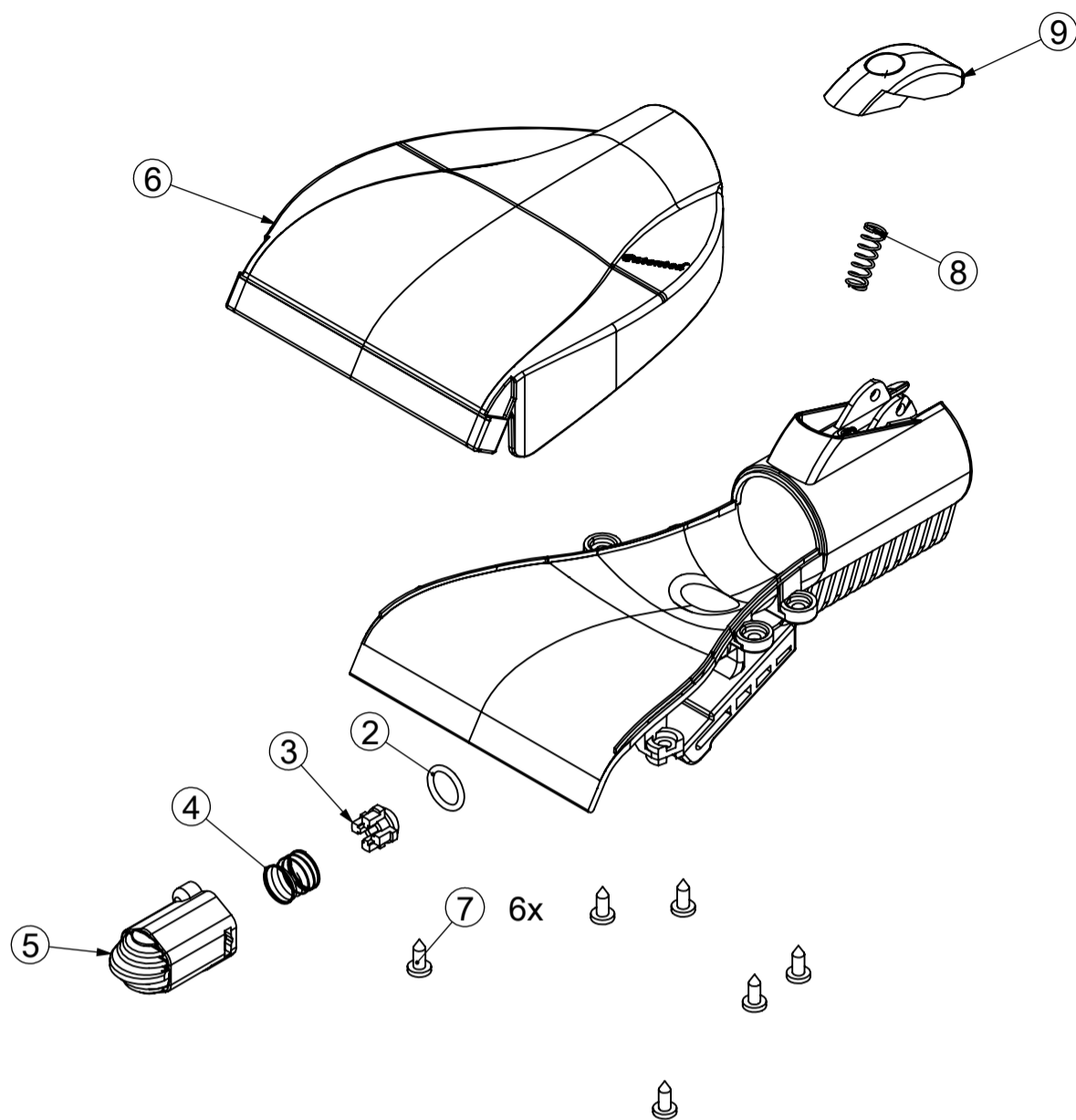
0		PRIMA EMISSIONE		DATE	APPROVED BY
REV.	MODIFY DESCRIPTION			DATE	APPROVED BY
DESCRIPTION				GEN. TOL. UNI EN ISO 22768 mK	
GRU. SERBATOIO ACQUA SP-4 LE BEAM				0.5-6	6-30
ENG DESCRIPTION				30-120	120-400
PDM CODE				400-1000	
A0900036	REV.	CODE	MATERIAL	TOLERANCES FOR ANGLES ±1°	
0		40101007001100		TOLERANCES FOR DRAFT ANGLES ±10°	
DRAWN BY			DATE	APPROVED BY	DATE
Andrea Amoretti			12/02/2018		
COLOUR		HEAT TREATMENT	SURFACE TREATMENT	SCALE	REFERENCES DIE
				1:5	A3



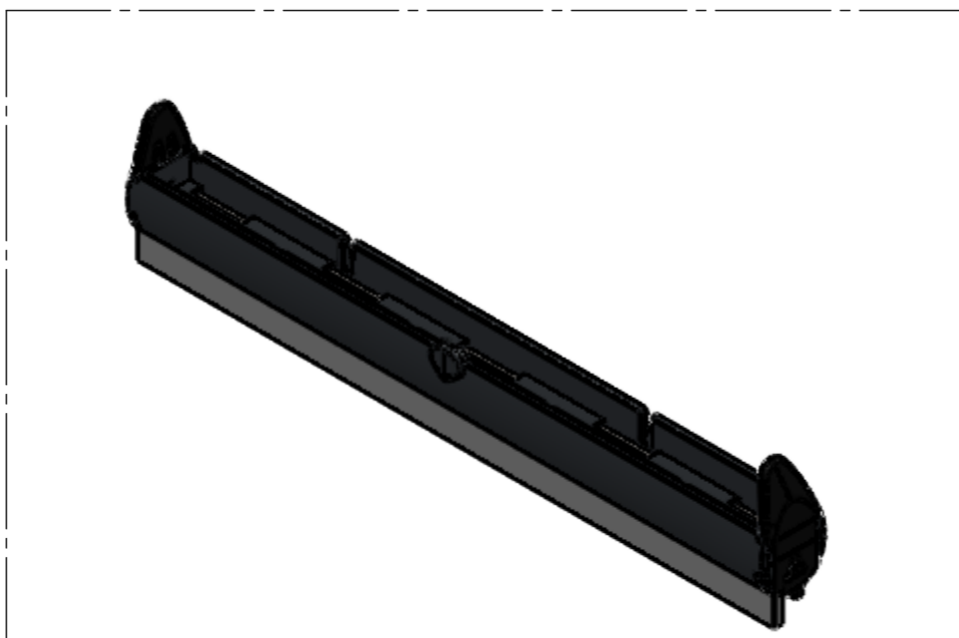
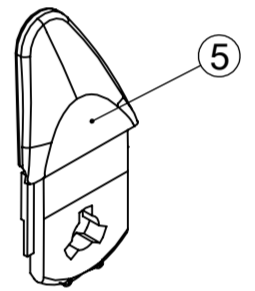
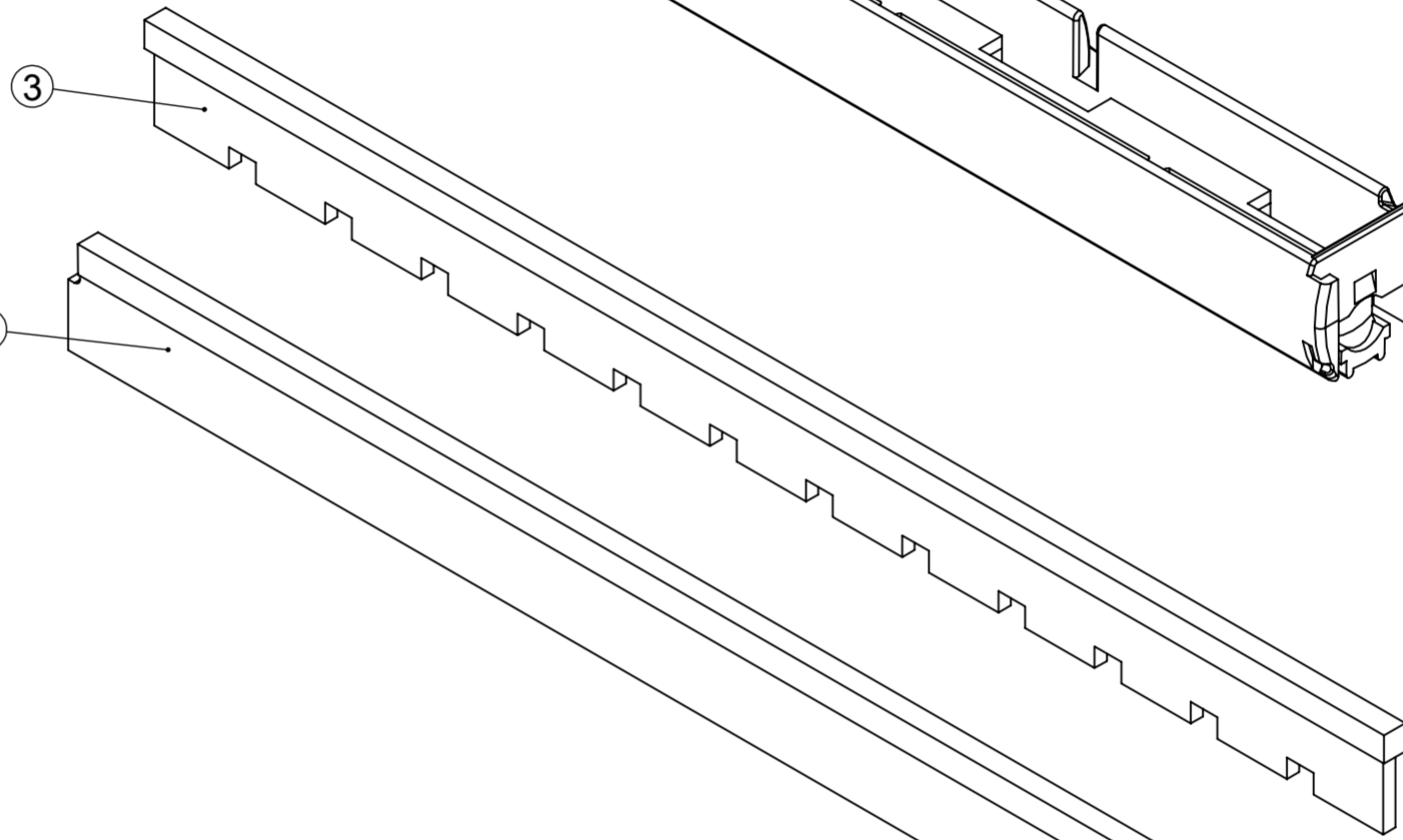
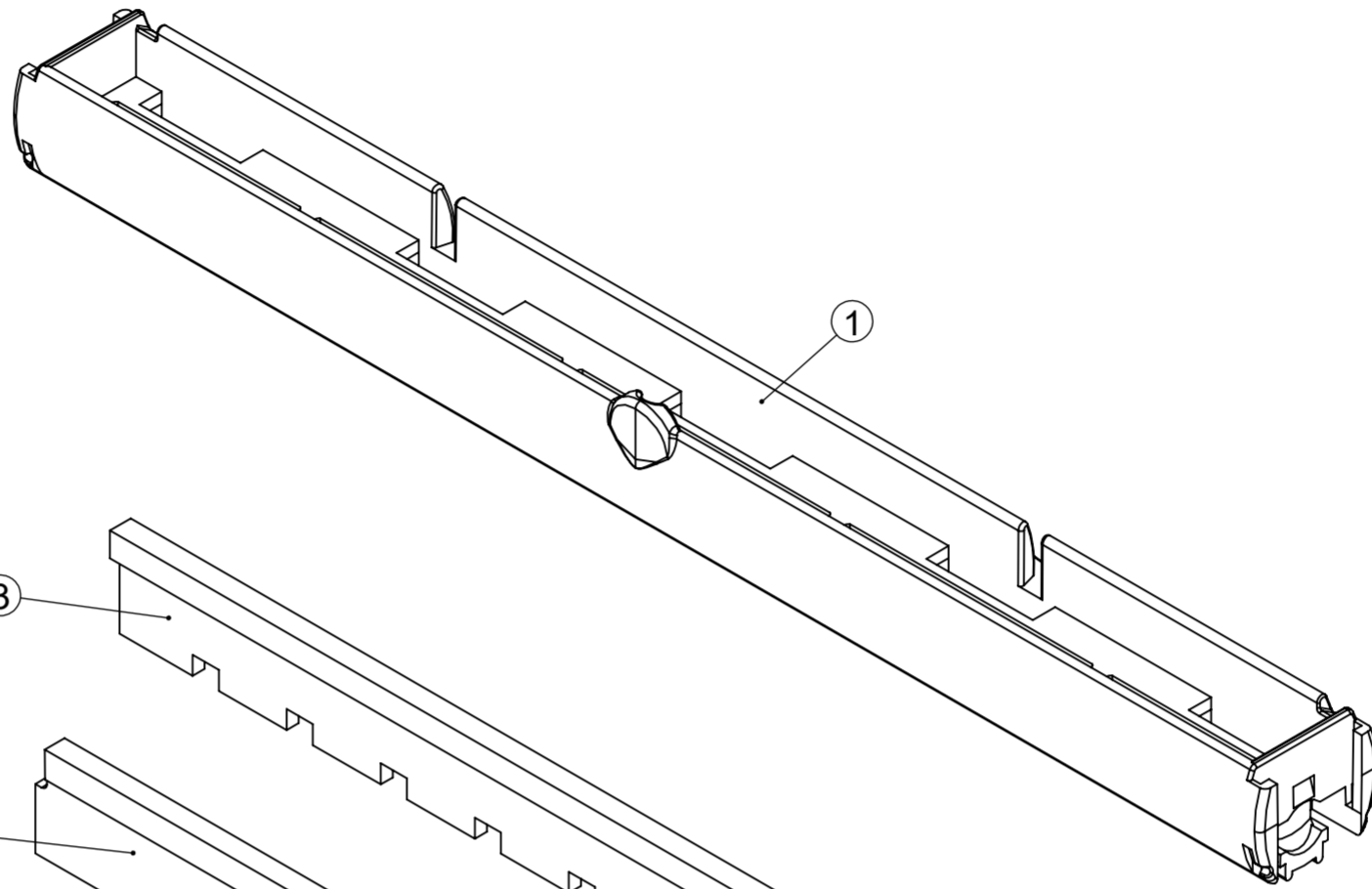
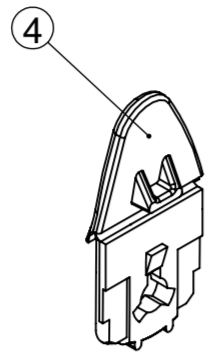
0		PRIMA EMISSIONE							
REV.	MODIFY DESCRIPTION			DATE	APPROVED BY				
DESCRIPTION				GRU. IMP. NMBL L=3m SP4 LE 5,5B 7024/40		TRAIMPEX S.p.A.		GEN. TOL. UNI EN ISO 22768 mK	
ENG DESCRIPTION				PIAZZETTA ALBERE 3/4, 36060 ROMANO D'EZZELINO VI - ITALY		TOLERANCES FOR ANGLES ±1° TOLERANCES FOR DRAFT ANGLES ±10°		0.5-8 8-30 30-120 120-400 400-1000 ±0.1 ±0.2 ±0.3 ±0.5 ±0.8	
PDM CODE	REV.	CODE	MATERIAL	CER	WEIGHT (g)				
A1000060	0	40140002010000			543,91				
DRAWN BY	DATE	APPROVED BY	DATE	SCALE	A2				
Andrea Amoretti	06/12/2021			1:10					
COLOUR	HEAT TREATMENT	SURFACE TREATMENT		REFERENCES DIE					
THIS DRAWING IS PROPERTY OF TPA IMPEX S.P.A. COMPANY. ITS DISCLOSURE, EVEN PARTIAL, WITHOUT WRITTEN AUTHORIZATION, IS PROHIBITED BY LAW.									



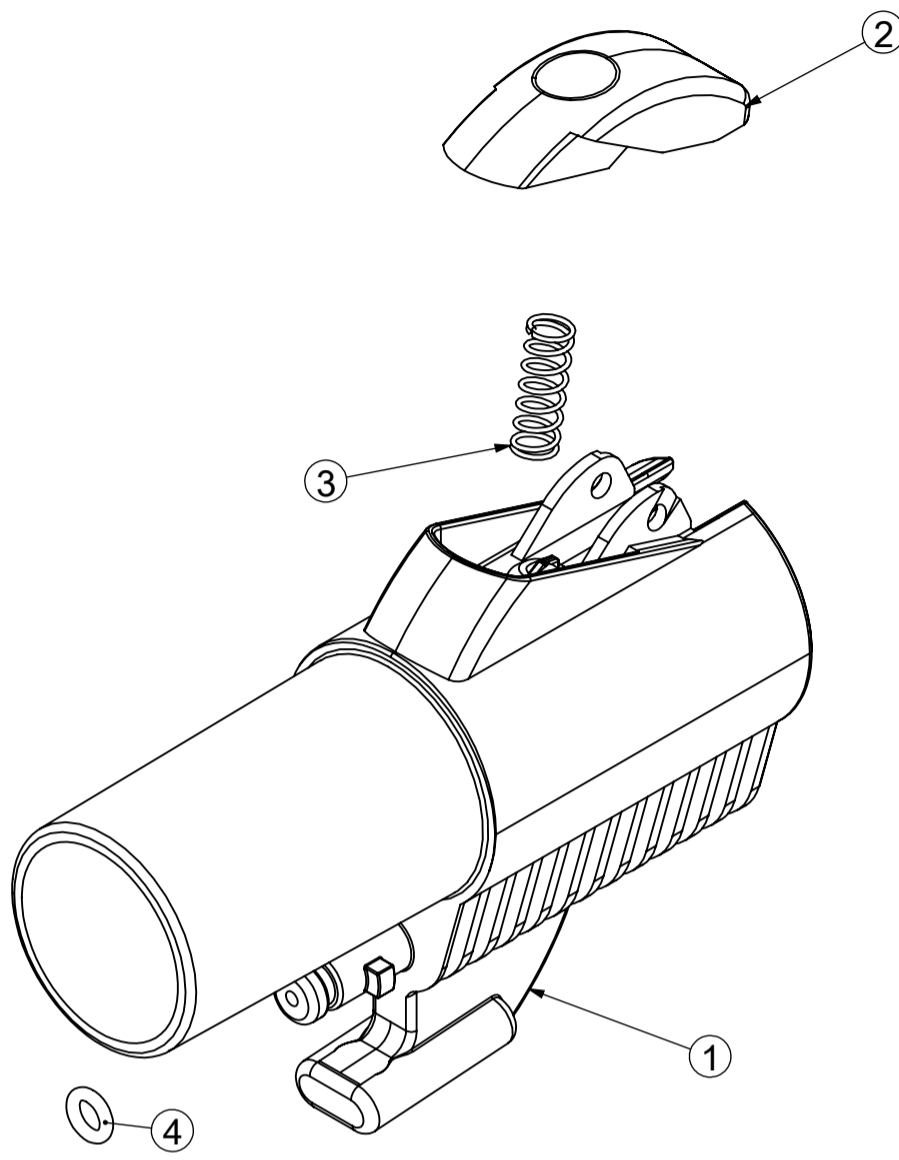
0			02/10/2018	Marco Cangiano
1				
REV.	MODIFY DESCRIPTION		DATE	APPROVED BY
DESCRIPTION		TPAIMPEX S.p.A.		GEN. TOL. UNI EN ISO 22768 mK
SPAZZOLA GRANDE ESTRAZIONE SW2/SP4 NEW		PIAZZETTA ALBERE 3/4, 36060 ROMANO D'EZZELINO VI - ITALY		0.5-6 ±0.1 6-30 ±0.2 30-120 ±0.3 120-400 ±0.5 400-1000 ±0.8
ENG DESCRIPTION				TOLERANCES FOR ANGLES ±1° TOLERANCES FOR DRAFT ANGLES ±10°
PDM CODE	REV.	CODE	MATERIAL	CER
A1400025	1	40103115110001		WEIGHT (g) 162,08
DRAWN BY	DATE	APPROVED BY	DATE	SCALE
Andrea Amoretti	21/02/2019			1:2
COLOUR	HEAT TREATMENT	SURFACE TREATMENT	REFERENCES DIE	



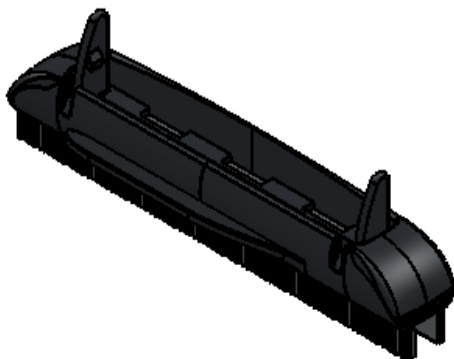
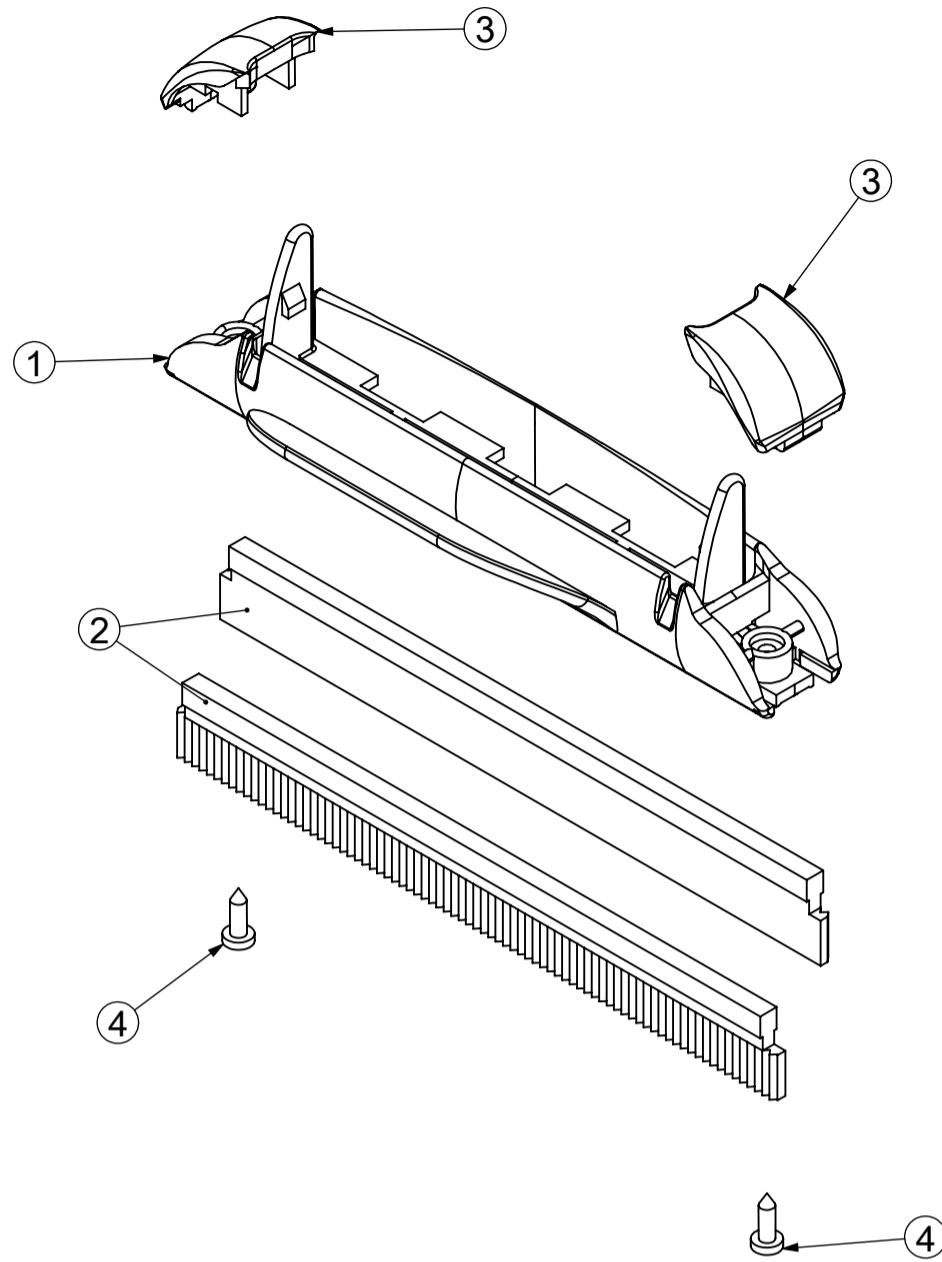
0		02/10/2018	Marco Cangiano
1			
REV.	MODIFY DESCRIPTION	DATE	APPROVED BY
DESCRIPTION		GEN. TOL. UNI EN ISO 22768 mK	
SPAZZOLA PICCOLA ESTRAZIONE SW2/SP4		0.5-6 6-30 30-120 120-400 400-1000	
ENG DESCRIPTION		±0.1 ±0.2 ±0.3 ±0.5 ±0.8	
small extraction washing brush sw2/sp4		TOLERANCES FOR ANGLES ±1° TOLERANCES FOR DRAFT ANGLES ±10°	
PDM CODE	REV.	CODE	MATERIAL
A1400028	1	40103115210000	
CER	WEIGHT (g)		
070213	176,2		
DRAWN BY	DATE	APPROVED BY	DATE
Marco Cangiano	10/01/2012		
COLOUR	HEAT TREATMENT	SURFACE TREATMENT	REFERENCES DIE



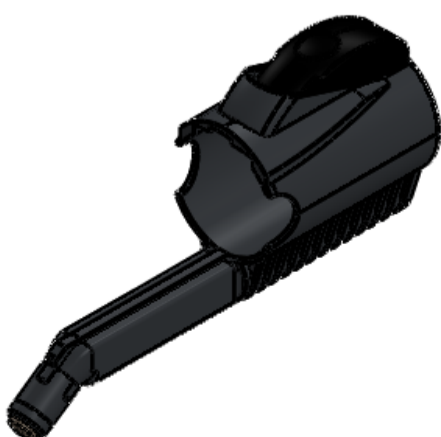
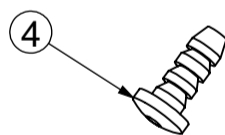
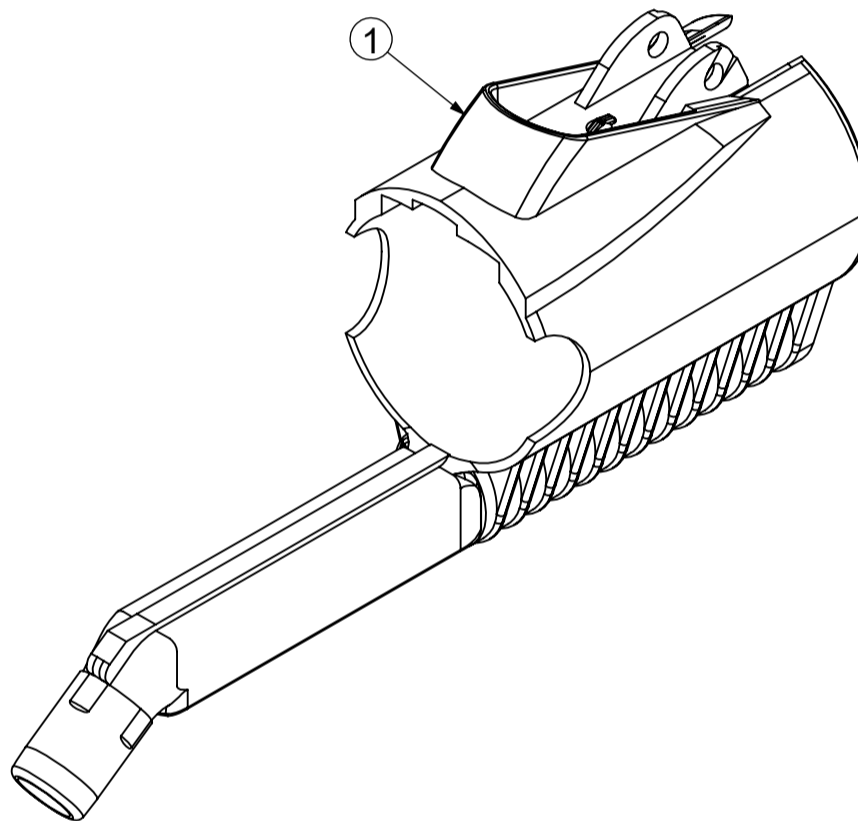
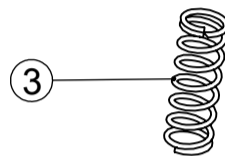
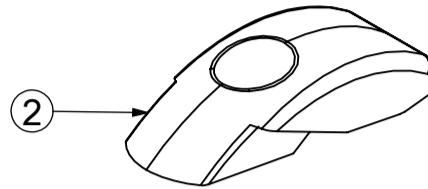
0		PRIMA EMISSIONE					
REV.	MODIFY DESCRIPTION	DATE	APPROVED BY				
DESCRIPTION		ASS.ASPIRALIQUIDI L238mm SIL/SET S/R		TPAIMPEX S.p.A.		GEN. TOL. UNI EN ISO 22768 mK	
ENG DESCRIPTION		acc.y for liquid l238mm sil/bristles wo/wheels		PIAZZETTA ALBERE 3/4, 36060 ROMANO D'EZZELINO VI - ITALY		0.5-6 6-30 30-120 120-400 400-1000 ±0.1 ±0.2 ±0.3 ±0.5 ±0.8	
PDM CODE	REV.	CODE	MATERIAL	CER	WEIGHT (g)		
A1400030	0	40103154101410			80,29		
DRAWN BY	DATE	APPROVED BY	DATE	SCALE	REFERENCES DIE		
Andrea Amoretti	02/09/2021			1:2	A2		
COLOUR	HEAT TREATMENT	SURFACE TREATMENT		REFERENCES DIE			
NATURALE							



0		PRIMA EMISSIONE		DATE	APPROVED BY
REV.	MODIFY DESCRIPTION			DATE	APPROVED BY
DESCRIPTION				GEN. TOL. UNI EN ISO 22768 mK	
MANICOTTO ADATTATORE COMPLETO ACC.DAVY				0.5-6	6-30
ENG DESCRIPTION				30-120	120-400
				400-1000	
				±0.1	±0.2
				±0.3	±0.5
				±0.5	±0.8
				TOLERANCES FOR ANGLES ±1°	
				TOLERANCES FOR DRAFT ANGLES ±10°	
PDM CODE	REV.	CODE	MATERIAL	CER	WEIGHT (g)
A1400040	0	40103239100000			54,52
DRAWN BY	DATE	APPROVED BY	DATE	SCALE	A3
Marco Cangiano	11/01/2012			1:1	
COLOUR	HEAT TREATMENT	SURFACE TREATMENT		REFERENCES DIE	

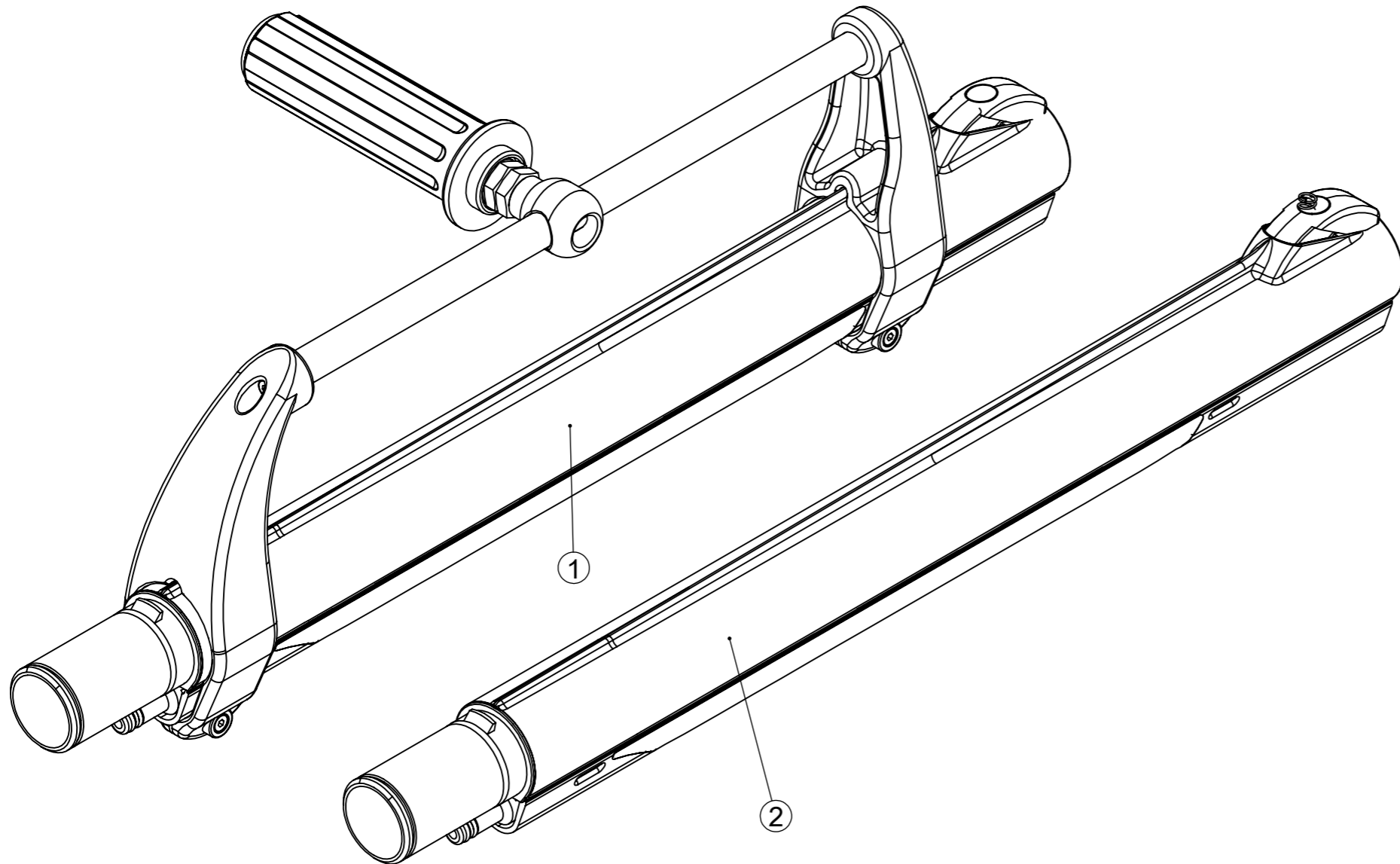


0		PRIMA EMISSIONE		DATE	APPROVED BY										
REV.	MODIFY DESCRIPTION			DATE	APPROVED BY										
DESCRIPTION				GEN. TOL. UNI EN ISO 22768 mK											
ASS.ASPIRALIQUIDI L=146mm GOMMA/GOMMA LE				<table border="1"> <tr> <td>0.5-6</td> <td>6-30</td> <td>30-120</td> <td>120-400</td> <td>400-1000</td> </tr> <tr> <td>±0.1</td> <td>±0.2</td> <td>±0.3</td> <td>±0.5</td> <td>±0.8</td> </tr> </table>		0.5-6	6-30	30-120	120-400	400-1000	±0.1	±0.2	±0.3	±0.5	±0.8
0.5-6	6-30	30-120	120-400	400-1000											
±0.1	±0.2	±0.3	±0.5	±0.8											
ENG DESCRIPTION				TOLERANCES FOR ANGLES ±1° TOLERANCES FOR DRAFT ANGLES ±10°											
ass.y liquid suction acc.146mm rubber/rub.															
PDM CODE				CER											
A1400064	REV.	CODE	MATERIAL	070213	WEIGHT (g)										
	0	40103154110000			59,43										
DRAWN BY		DATE	APPROVED BY	DATE	SCALE										
Marco Alessio		12/12/2013			1:2										
COLOUR		HEAT TREATMENT	SURFACE TREATMENT		REFERENCES DIE										
NATURALE															

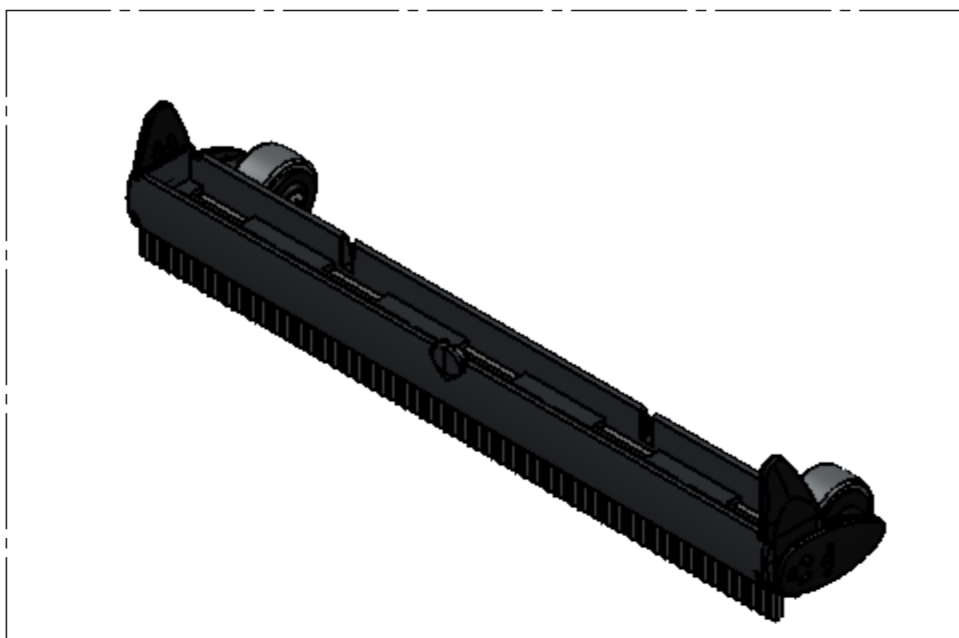
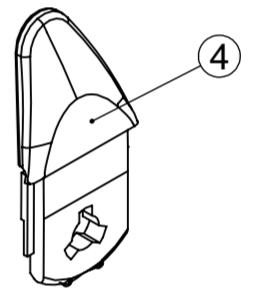
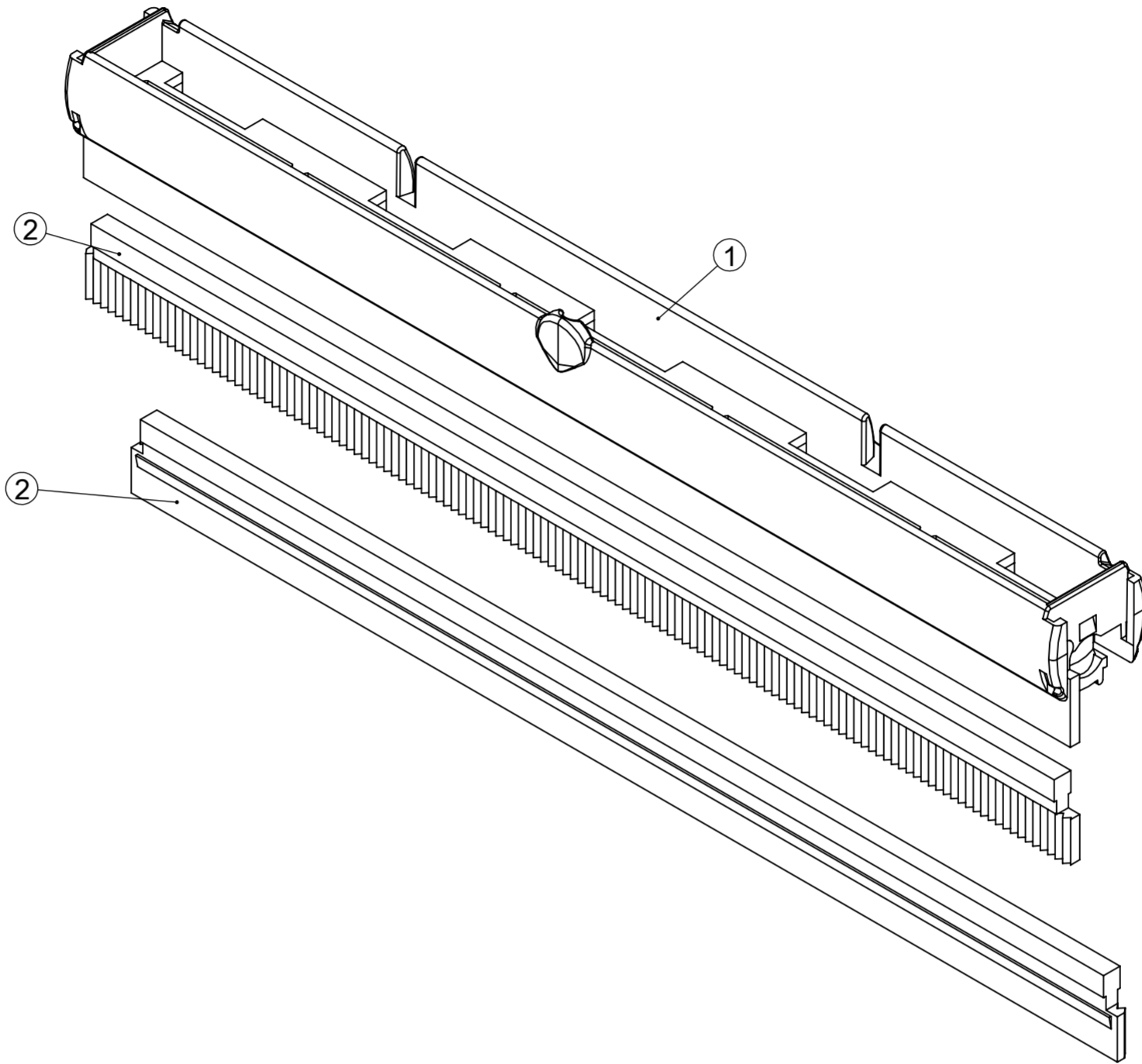
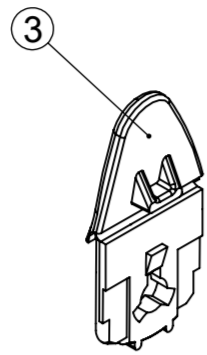


0		PRIMA EMISSIONE		DATE	APPROVED BY
REV.	MODIFY DESCRIPTION			DATE	APPROVED BY
DESCRIPTION				GEN. TOL. UNI EN ISO 22768 mK	
DRESS-FIT GRIGIO A-V 1F TASTO NERO R3				0.5-6	6-30
ENG DESCRIPTION				30-120	120-400
steam&vac nozzle 1 hole r3				400-1000	400-1000
PDM CODE				TOLERANCES FOR ANGLES ±1°	
A1400090	REV.	CODE	MATERIAL	TOLERANCES FOR DRAFT ANGLES ±10°	
A1400090	0	40103132003000		CER	WEIGHT (g)
DRAWN BY		DATE	APPROVED BY	DATE	SCALE
Marco Alessio		22/05/2015			1:2
COLOUR		HEAT TREATMENT	SURFACE TREATMENT	REFERENCES DIE	

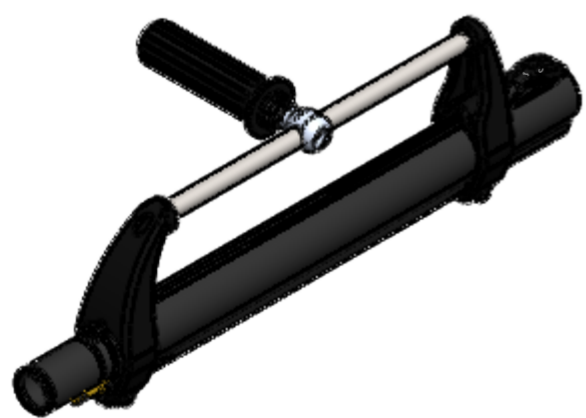
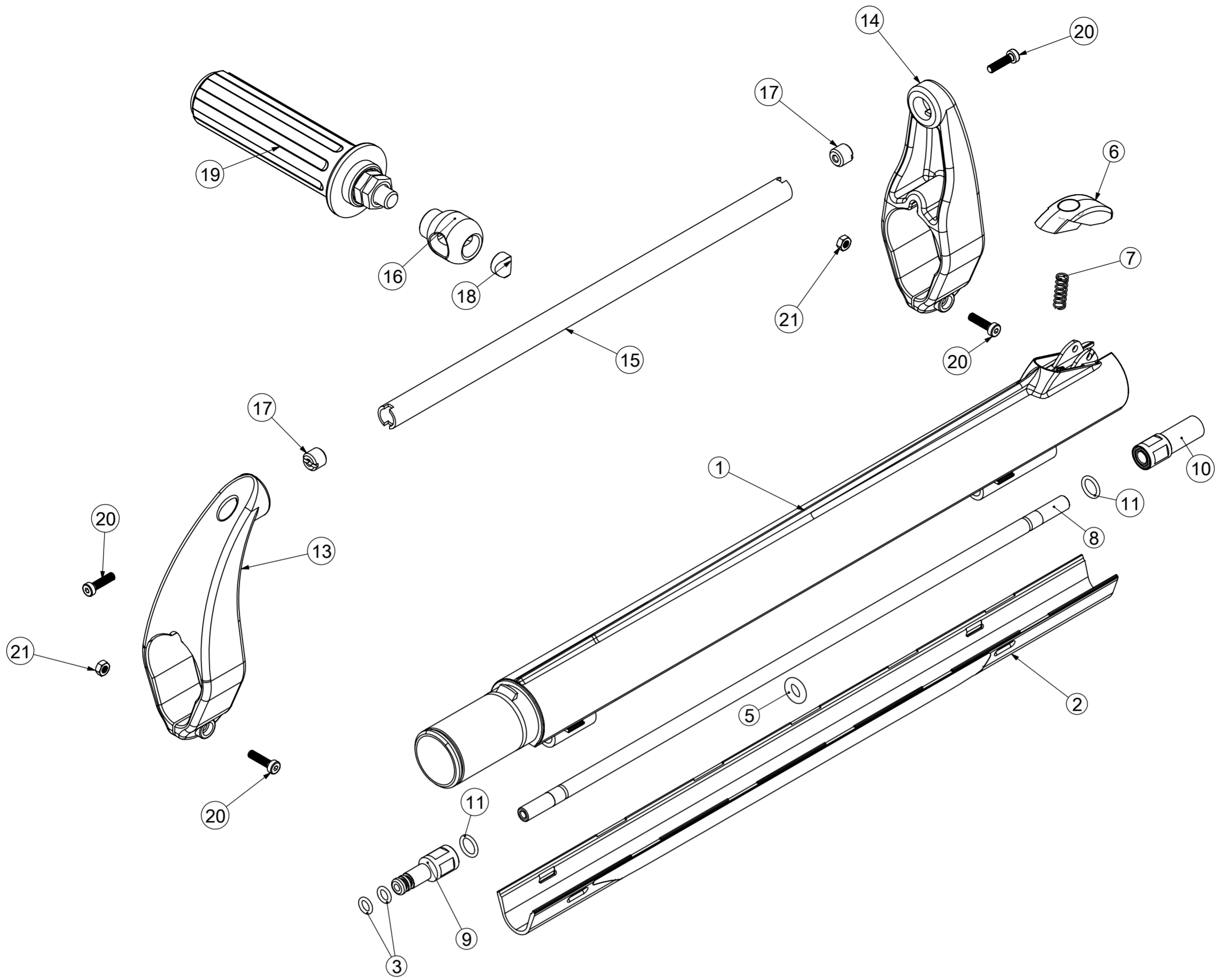
TPAIMPEX
S.p.A.
PIAZZETTA ALBERE 3/4,
36060 ROMANO D'EZZELINO
VI - ITALY



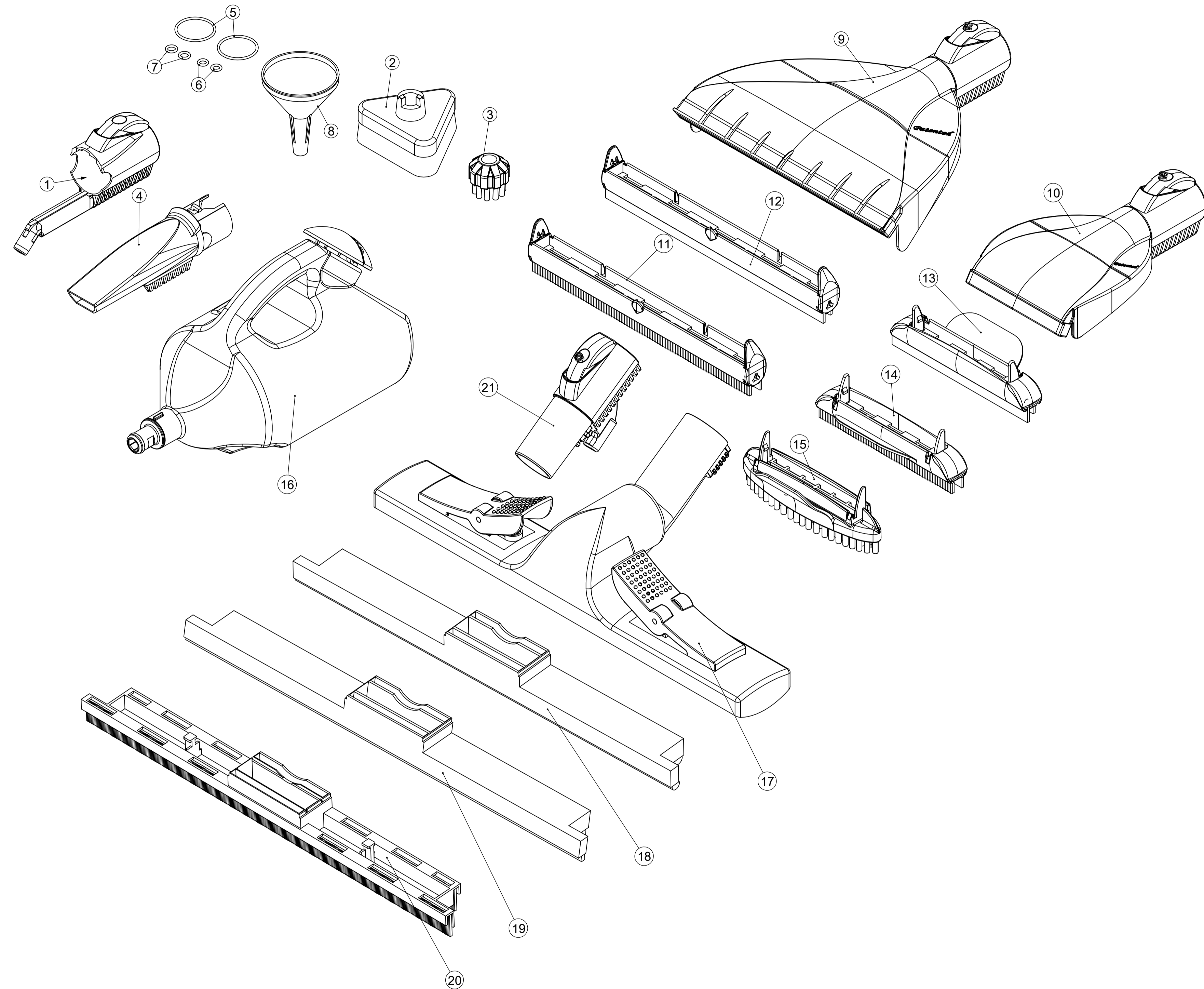
0		PRIMA EMISSIONE					
REV.	MODIFY DESCRIPTION			DATE	APPROVED BY		
DESCRIPTION						GEN. TOL. UNI EN ISO 22768 mK	
KIT ACC. TUBI PROLUNGA PROF 2PZ 7024/40				PIAZZETTA ALBERE 3/4, 36060 ROMANO D'EZZELINO VI - ITALY		0.5-6	6-30
ENG DESCRIPTION				TOLERANCES FOR ANGLES ±1° TOLERANCES FOR DRAFT ANGLES ±10°		30-120	120-400
PDM CODE	REV.	CODE	MATERIAL	CER	WEIGHT (g)		
A1400195	0	40141016941010			1090,25		
DRAWN BY		DATE	APPROVED BY	DATE	SCALE		
Andrea Amoretti		19/11/2021			1:5	A3	
COLOUR		HEAT TREATMENT	SURFACE TREATMENT	REFERENCES DIE			
THIS DRAWING IS PROPERTY OF TPA IMPEX S.P.A. COMPANY. ITS DISCLOSURE, EVEN PARTIAL, WITHOUT WRITTEN AUTHORIZATION, IS PROHIBITED BY LAW.							


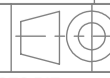


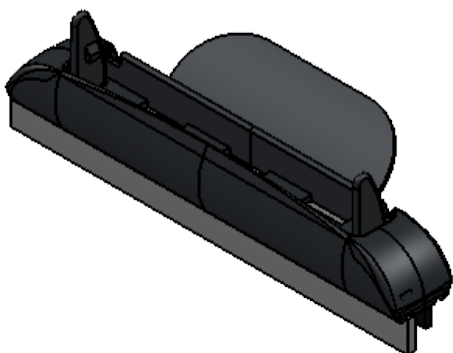
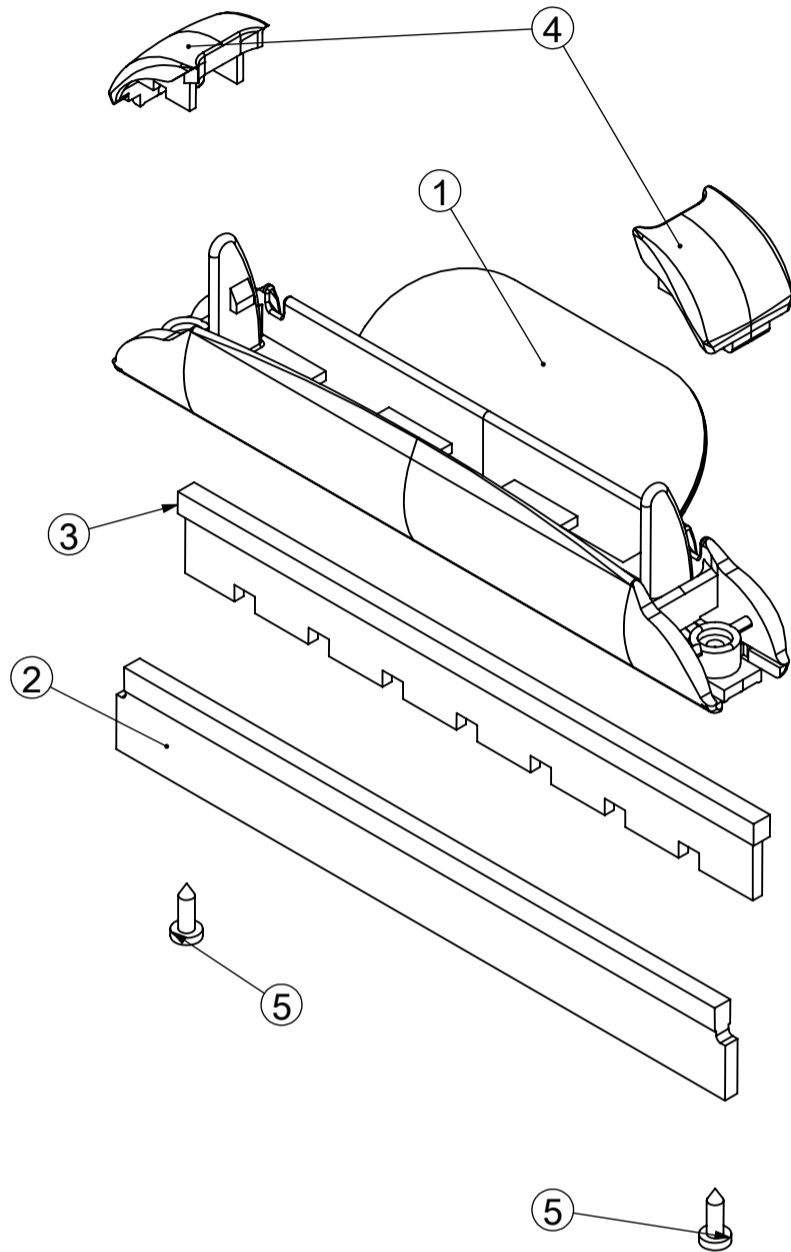
0		PRIMA EMISSIONE		DATE	APPROVED BY
REV.	MODIFY DESCRIPTION	DATE	APPROVED BY		
DESCRIPTION			GEN. TOL. UNI EN ISO 22768 mK		
ASS.ASPIRALIQUIDI L=238mm GOM/GOM LE S/R			0.5-6	6-30	30-120
ENG DESCRIPTION			±0.1	±0.2	±0.3
			±0.5	±0.8	
PDM CODE			REV.	CODE	MATERIAL
A1400240			0	40103154101100	
DRAWN BY			DATE	APPROVED BY	DATE
Andrea Amoretti			30/01/2019		
COLOUR			HEAT TREATMENT	SURFACE TREATMENT	REFERENCES DIE
NATURALE					
			CER	WEIGHT (g)	
				98,84	
			SCALE	A2	
			1:2		



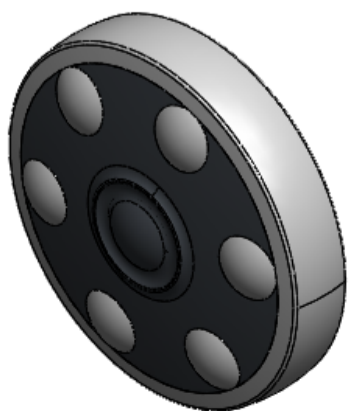
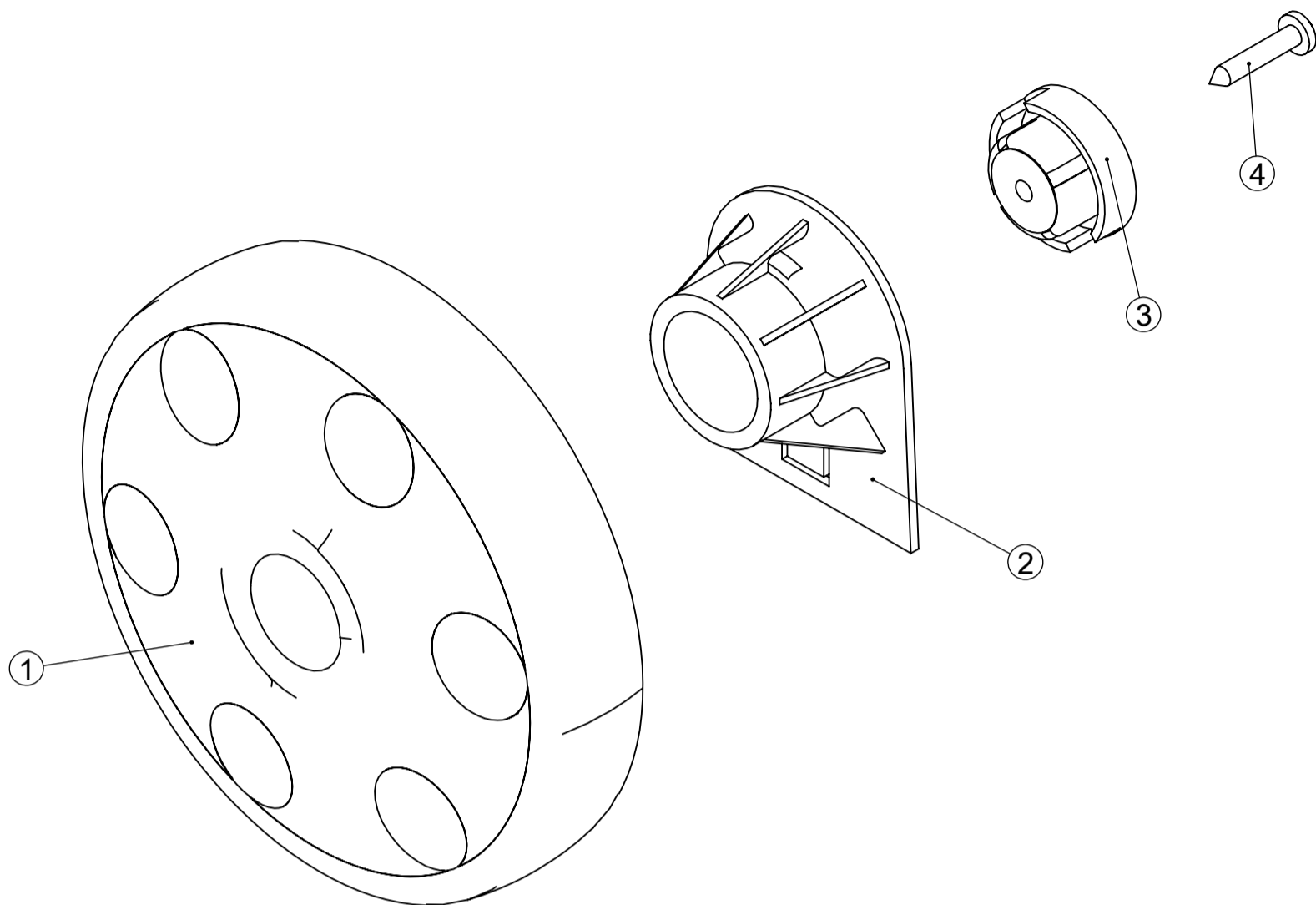
0		PRIMA EMISSIONE		DATE	APPROVED BY
REV.	MODIFY DESCRIPTION			DATE	APPROVED BY
DESCRIPTION				GEN. TOL. UNI EN ISO 22768 mK	
TUBO PROLUNGA A-V 24/40 OT PROF C/MAN R1				0.5-6	6-30 30-120 120-400 400-1000
ENG DESCRIPTION				±0.1	±0.2 ±0.3 ±0.5 ±0.8
PDM CODE				TOLERANCES FOR ANGLES ±1°	
A1400271	REV. 0	CODE 40103130200101	MATERIAL	TOLERANCES FOR DRAFT ANGLES ±10°	
DRAWN BY	DATE	APPROVED BY	DATE	SCALE	WEIGHT (g)
Andrea Amoretti	21/09/2020			1:5	751,09
COLOUR	HEAT TREATMENT	SURFACE TREATMENT	REFERENCES DIE	A2	
THIS DRAWING IS PROPERTY OF TPA IMPEX S.P.A. COMPANY. ITS DISCLOSURE, EVEN PARTIAL, WITHOUT WRITTEN AUTHORIZATION, IS PROHIBITED BY LAW.					



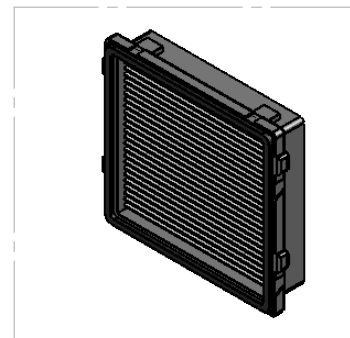
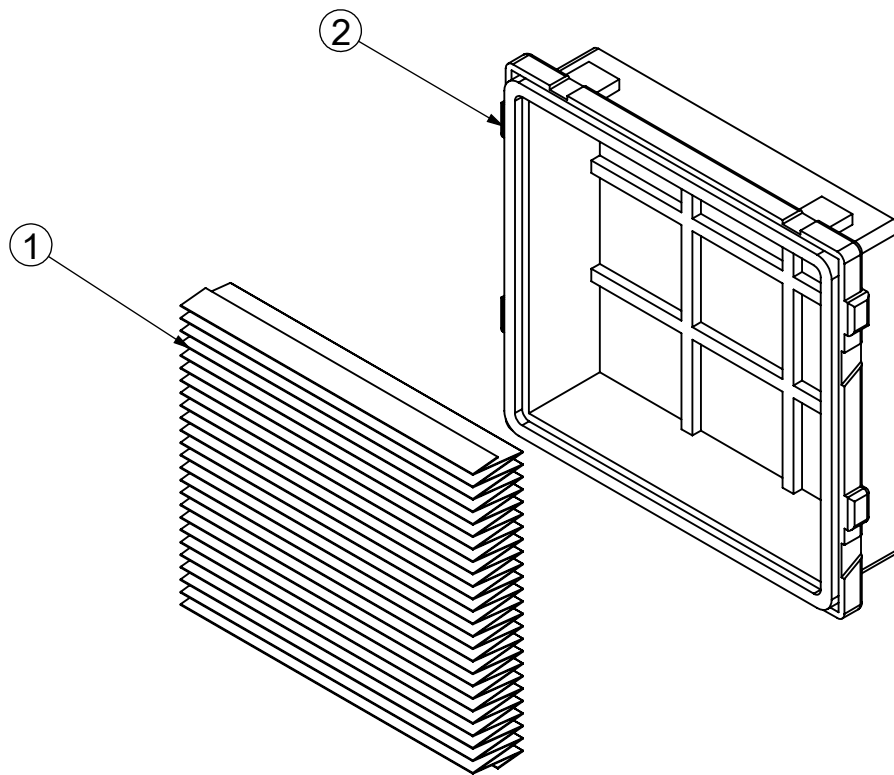
0 PRIMA EMISSIONE		DATE	APPROVED BY
REV.	MODIFY DESCRIPTION		
DESCRIPTION KIT ACC.S2 C/IMP.S3 BEAM LE T/NE PROF R1		 <small>GEN. TOL. UNI EN ISO 22768 mk 0.5h 0.30 0.10 0.05 0.02</small>	
ENG DESCRIPTION		<small>PIAZZETTA ALBERE 3/A 36060 ROMANO D'ADDELNO VI - ITALY</small>	
PDM CODE A1400272	REV. 0	CODE 40141008000141	MATERIAL
DRAWN BY Andrea Amoretti	DATE 25/02/2020	APPROVED BY	DATE
COLOUR	HEAT TREATMENT	SURFACE TREATMENT	REFERENCES DIE
WEIGHT (g) 1749,19			SCALE 1:5
			 A1
<small>THIS DRAWING IS PROPERTY OF TRAMPLEX S.P.A. COMPANY. ITS DISCLOSURE, EVEN PARTIAL, WITHOUT WRITTEN AUTHORIZATION, IS PROHIBITED BY LAW.</small>			





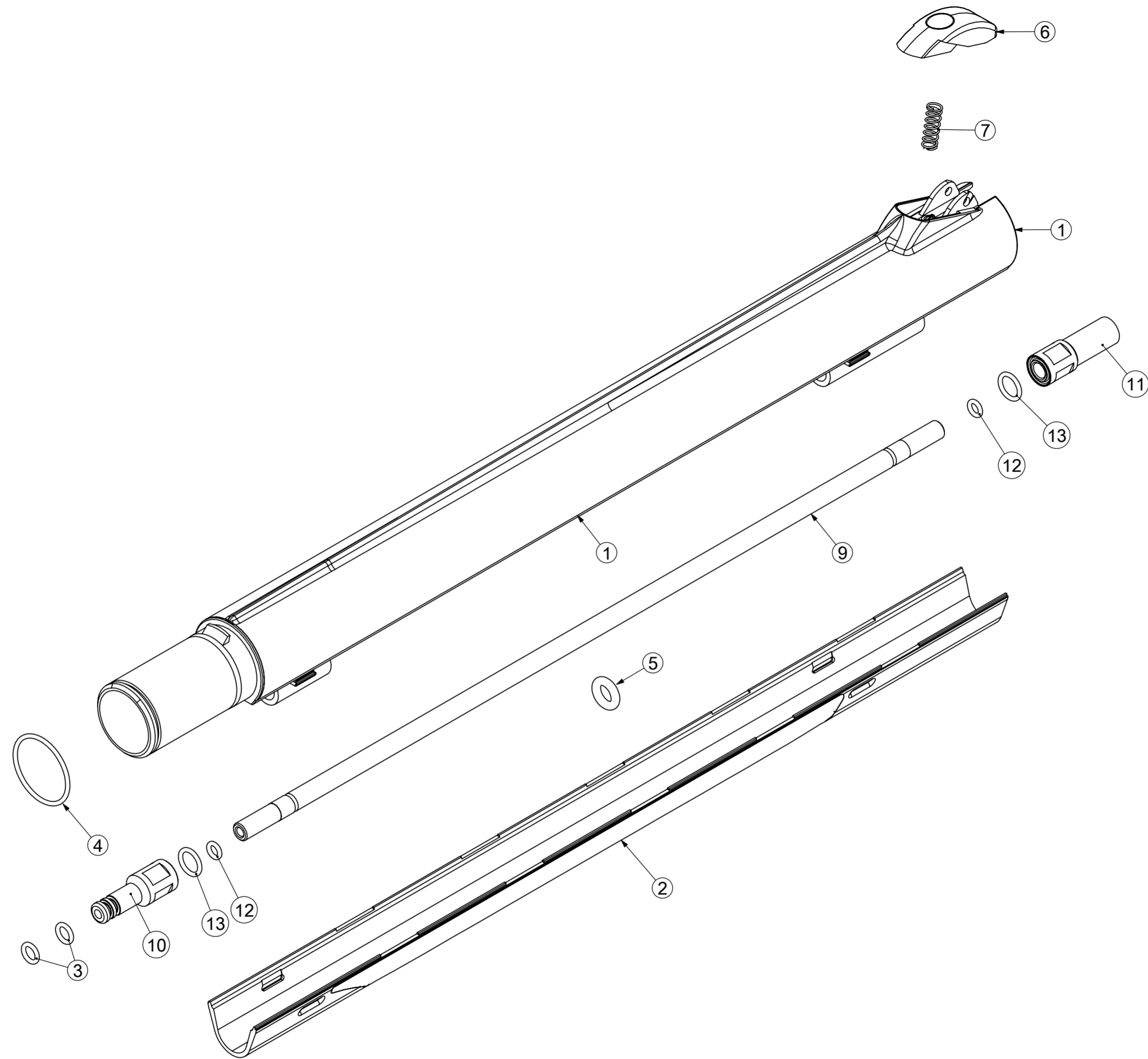
0		PRIMA EMISSIONE						
REV.	MODIFY DESCRIPTION			DATE	APPROVED BY			
DESCRIPTION				 PIAZZETTA ALBERE 3/4, 36060 ROMANO D'EZZELINO VI - ITALY		GEN. TOL. UNI EN ISO 22768 mK		
ENG DESCRIPTION						0.5-6	6-30	30-120
				±0.1	±0.2	±0.3	±0.5	±0.8
				TOLERANCES FOR ANGLES ±1° TOLERANCES FOR DRAFT ANGLES ±10°				
PDM CODE	REV.	CODE	MATERIAL	CER	WEIGHT (g)			
A1400319	0	40103154110050		070213	57,43			
DRAWN BY		DATE	APPROVED BY	DATE	SCALE	REFERENCES DIE		
Andrea Amoretti		02/09/2021			1:2	A3		
COLOUR		HEAT TREATMENT	SURFACE TREATMENT					
NATURALE								



0		PRIMA EMISSIONE		DATE	APPROVED BY
REV.	MODIFY DESCRIPTION			DATE	APPROVED BY
DESCRIPTION				GEN. TOL. UNI EN ISO 22768 mK	
KIT RUOTA BICOMPONENTE GRIGIO R 7024				0.5-6	6-30
ENG DESCRIPTION				30-120	120-400
ass.y back wheel bicomp. Grey ral7024				400-1000	±0.8
PDM CODE				TOLERANCES FOR ANGLES ±1°	
A1500020	REV.	CODE	MATERIAL	TOLERANCES FOR DRAFT ANGLES ±10°	
	0	40141201000400		CER	WEIGHT (g)
DRAWN BY		DATE	APPROVED BY	SCALE	
Marco Cangiano		19/07/2016		1:2	A3
COLOUR		HEAT TREATMENT	SURFACE TREATMENT	REFERENCES DIE	

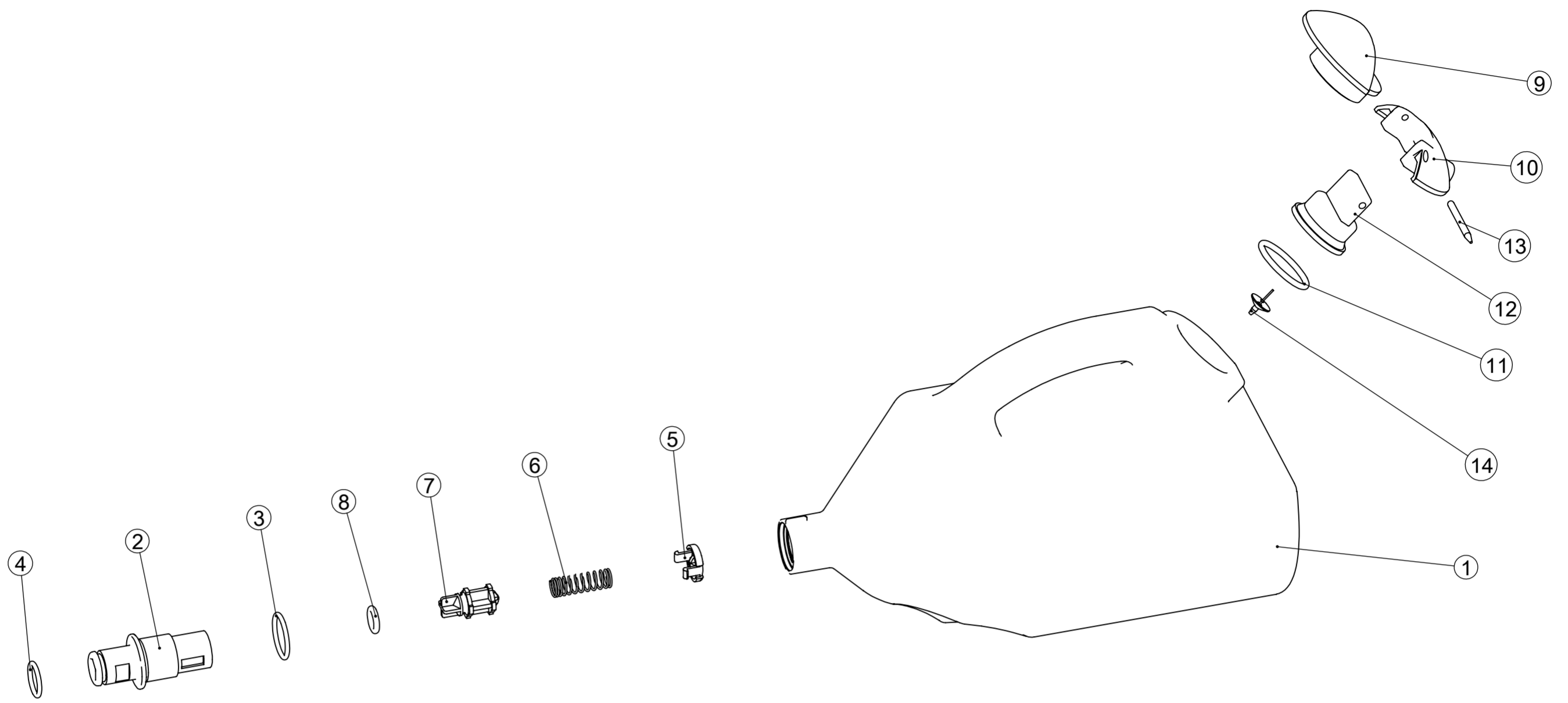


0				20/09/2013	Marco Cangiano										
1															
REV.	MODIFY DESCRIPTION			DATE	APPROVED BY										
DESCRIPTION FILTRO POLIESTERE USC. ARIA SP4 MONTATO				 PIAZZETTA ALBERE 3/4, 36060 ROMANO D'EZZELINO VI - ITALY											
ENG DESCRIPTION															
PDM CODE A9900034		REV. 1	CODE 40133011100000	MATERIAL	CER										
DRAWN BY MARCO ALESSIO		DATE 01/02/2011	APPROVED BY	DATE	SCALE 1:2										
COLOUR	HEAT TREATMENT	SURFACE TREATMENT	REFERENCES DIE												
GEN. TOL. UNI EN ISO 22768 mK <table border="1"> <tr> <td>0.5-6</td> <td>6-30</td> <td>30-120</td> <td>120-400</td> <td>400-1000</td> </tr> <tr> <td>±0.1</td> <td>±0.2</td> <td>±0.3</td> <td>±0.5</td> <td>±0.8</td> </tr> </table> TOLERANCES FOR ANGLES ±1° TOLERANCES FOR DRAFT ANGLES ±10°						0.5-6	6-30	30-120	120-400	400-1000	±0.1	±0.2	±0.3	±0.5	±0.8
0.5-6	6-30	30-120	120-400	400-1000											
±0.1	±0.2	±0.3	±0.5	±0.8											
				WEIGHT (g) 22,61	 A4										

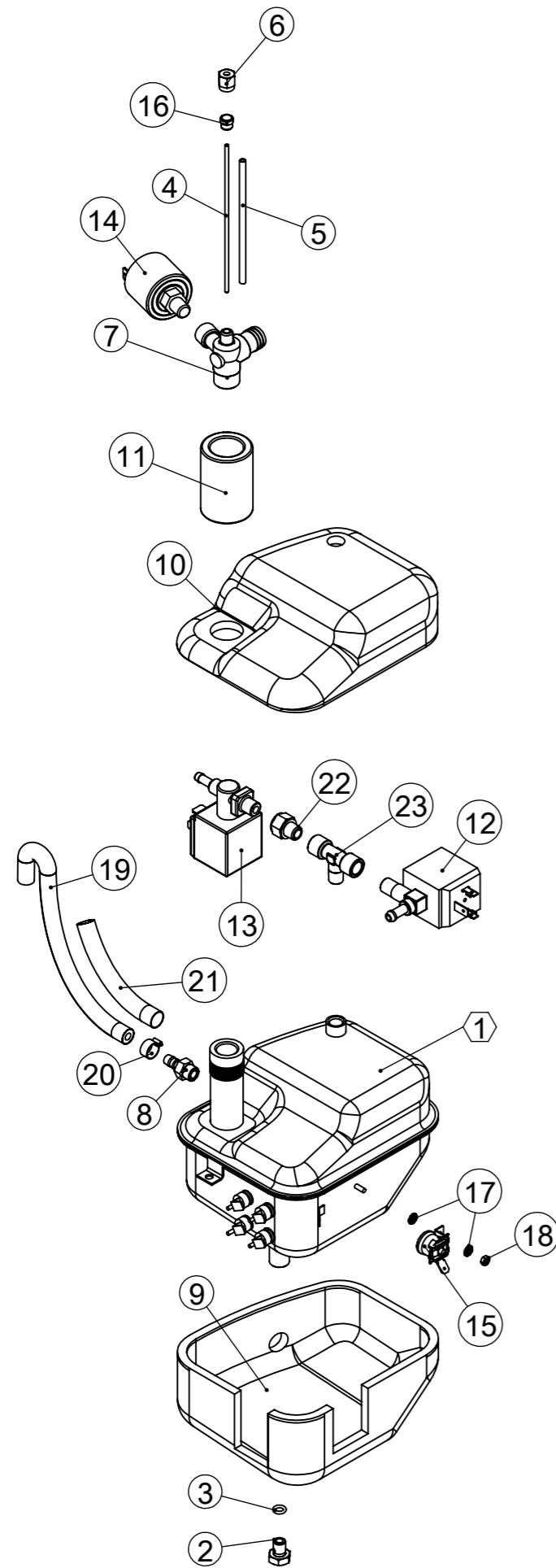


0		14/05/2018	Marco Cangiano
1	PRIMA EMISSIONE		
REV.	MODIFY DESCRIPTION	DATE	APPROVED BY
DESCRIPTION TUBO PROLUNGA A-V 7024/7040 OT PROF R1			
ENG DESCRIPTION		<small>GEN. TOL. UNI EN ISO 22768 mK</small> <small>0.5-8 8-30 30-120 120-400 400-1000</small> <small>±0.1 ±0.2 ±0.3 ±0.5 ±0.8</small> <small>TOLERANCES FOR ANGLES ±1°</small> <small>TOLERANCES FOR DRAFT ANGLES ±10°</small>	
PDM CODE A9900114	REV. 1	CODE 40103130200001	MATERIAL
DRAWN BY Matteo Bertizzolo	DATE 05/10/2011	APPROVED BY	DATE
COLOUR 7024/7040	HEAT TREATMENT	SURFACE TREATMENT	REFERENCES DIE
CER 070213		WEIGHT (g) 376,1	
SCALE 1:5		A2	

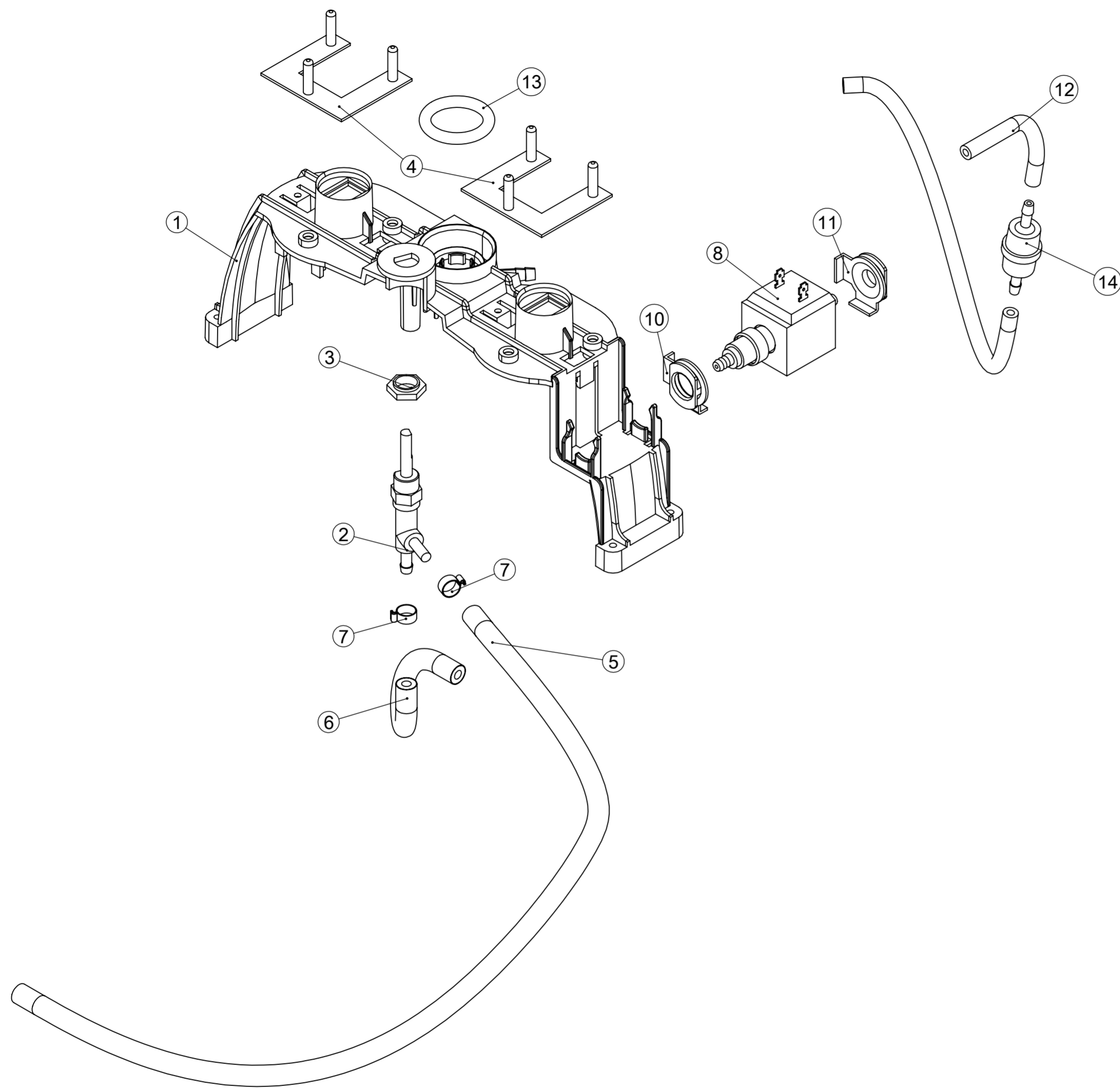
THIS DRAWING IS PROPERTY OF TPA IMPEX S.P.A. COMPANY. ITS DISCLOSURE, EVEN PARTIAL, WITHOUT WRITTEN AUTHORIZATION, IS PROHIBITED BY LAW.



0		PRIMA EMISSIONE						
REV.	MODIFY DESCRIPTION	DATE		APPROVED BY				
DESCRIPTION				GEN. TOL. UNI EN ISO 22768 mK				
ASS.BOTTIGLIA DOS.1,7L R7040 WATER S/PRO				0.5-6	6-30	30-120	120-400	400-1000
ENG DESCRIPTION				±0.1	±0.2	±0.3	±0.5	±0.8
PDM CODE				TOLERANCES FOR ANGLES ±1°				
A9900574				TOLERANCES FOR DRAFT ANGLES ±10°				
REV.	CODE	MATERIAL		CER		WEIGHT (g)		
0	50103194100100					292,05		
DRAWN BY		DATE	APPROVED BY	DATE	SCALE	REFERENCES DIE		
Andrea Amoretti		18/09/2019			1:2	A2		
COLOUR		HEAT TREATMENT	SURFACE TREATMENT					



0		PRIMA EMISSIONE		DATE	APPROVED BY										
REV.	MODIFY DESCRIPTION			DATE	APPROVED BY										
DESCRIPTION				GEN. TOL. UNI EN ISO 22768 mK											
CALDA. 0,7L SP-4 LE BEAM 5,5 BAR				<table border="1"> <tr> <td>0.5-6</td> <td>6-30</td> <td>30-120</td> <td>120-400</td> <td>400-1000</td> </tr> <tr> <td>±0.1</td> <td>±0.2</td> <td>±0.3</td> <td>±0.5</td> <td>±0.8</td> </tr> </table>		0.5-6	6-30	30-120	120-400	400-1000	±0.1	±0.2	±0.3	±0.5	±0.8
0.5-6	6-30	30-120	120-400	400-1000											
±0.1	±0.2	±0.3	±0.5	±0.8											
ENG DESCRIPTION				TOLERANCES FOR ANGLES ±1° TOLERANCES FOR DRAFT ANGLES ±10°											
PDM CODE	REV.	CODE	MATERIAL	CER	WEIGHT (g)										
A9900612	0	40145026000060			1854,35										
DRAWN BY		DATE	APPROVED BY	DATE	SCALE										
Andrea Amoretti		19/02/2018			1:5										
COLOUR	HEAT TREATMENT	SURFACE TREATMENT	REFERENCES DIE												



0		PRIMA EMISSIONE					
REV.	MODIFY DESCRIPTION	DATE	APPROVED BY				
DESCRIPTION			GEN. TOL. UNI EN ISO 22768 mK				
GRU. STAFFA LED SP4 LE BEAM			0.5-8	8-30	30-120	120-400	400-1000
ENG DESCRIPTION			±0.1	±0.2	±0.3	±0.5	±0.8
			TOLERANCES FOR ANGLES ±1°			TOLERANCES FOR DRAFT ANGLES ±10°	
PDM CODE	REV.	CODE	MATERIAL		CER	WEIGHT (g)	
A9900614	0	40109105001010				229,06	
DRAWN BY	DATE	APPROVED BY	DATE		SCALE	A2	
Andrea Amoretti	25/02/2020				1:2		
COLOUR	HEAT TREATMENT	SURFACE TREATMENT		REFERENCES DIE			
THIS DRAWING IS PROPERTY OF TPA IMPEX S.P.A. COMPANY. ITS DISCLOSURE, EVEN PARTIAL, WITHOUT WRITTEN AUTHORIZATION, IS PROHIBITED BY LAW.							