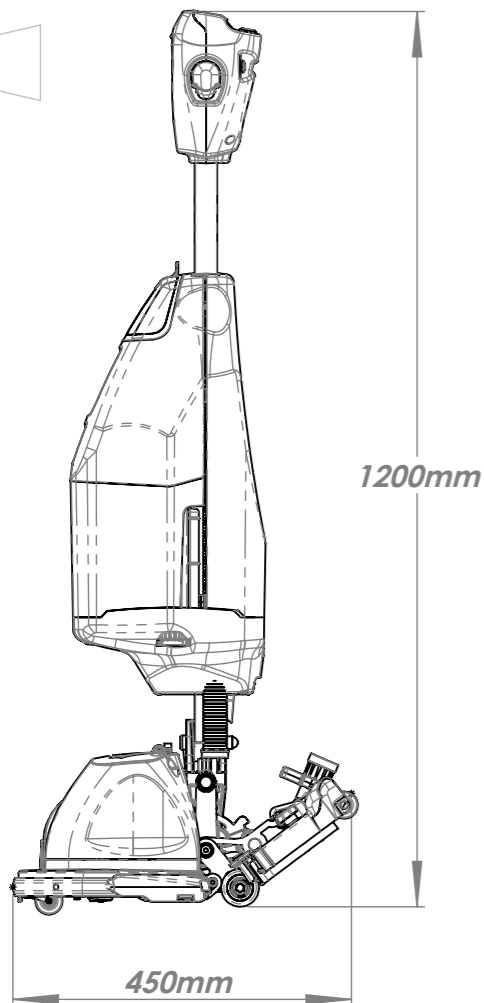


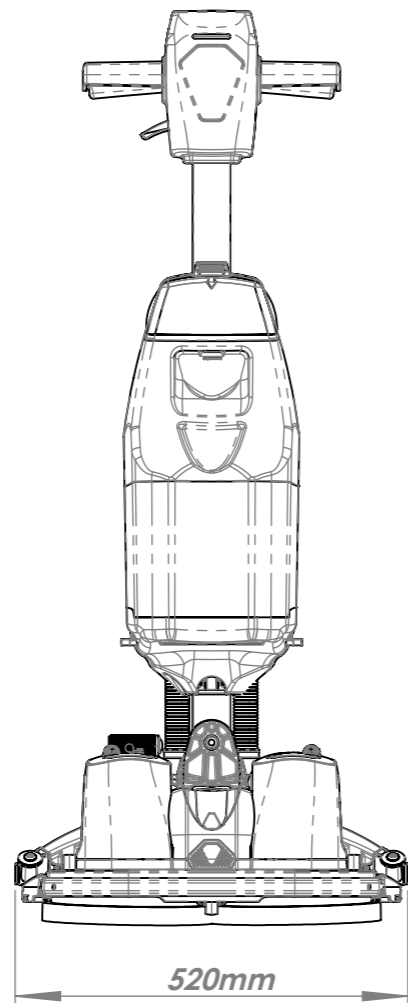
THIRD ANGLE PROJECTION

A

B



2



3

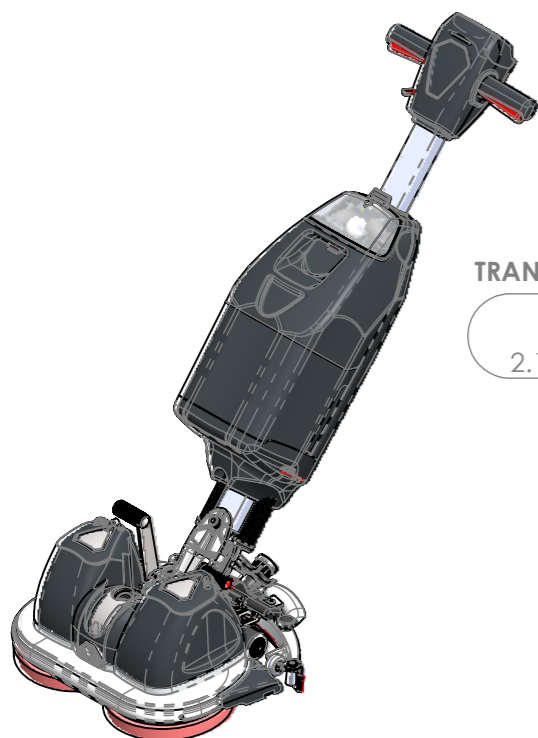
BRUSH/PAD WIDTH	440mm / 17.3in (2 x 220mm / 2 x 8.65in)	GROSS WEIGHT (i.e. with Liquid & Battery)	25.5kg
CLEANING AREA	1320m ² /h @ 3 km/h 14'208ft ² /h @ 1.86 mph	NETT WEIGHT (i.e. NO liquid NO Battery)	21.3kg
BRUSH/PAD WEIGHT IN CLEANING MODE	12.5 kg 27.5 lbs	POWER SOURCE	Li - ion BATTERY ~ 36V (300Wh)
BRUSH PRESSURE IN CLEANING MODE	18.95 g/cm ² 0.27 lbs/in ²	RUN TIME (BATTERY LIFE)	60 - 80 min
PAD PRESSURE IN CLEANING MODE	20.10 g/cm ² 0.28 lbs/in ²	RECHARGING TIME	1 HR (80%)
BRUSH MOTOR POWER	2 x 200W	HEIGHT	1200mm 47.2in
BRUSH SPEED	140 rpm	LENGTH	450mm 17.71in
VAC MOTOR MAX. POWER	100W	WIDTH	520mm 20.47in
VAC MOTOR SUCTION @ SQUEEGEE	95 mbar	SOUND PRESSURE (LpA) UNCERTAINTY (KpA)	≤68.5dB(A) ±0.5dB
VAC MOTOR AIRFLOW @ SQUEEGEE	5.7 l/sec	VIBRATION LEVEL	HAV ≤2.5 m/s ² HAV ≤8.2 ft/s ²
WATER FLOW	0.07 - 0.33 l/min	WATER INGRESS	IPX3
CLEAN TANK CAPACITY (MAX)	2.2L / 0.58 US gal	RATING	500W
WASTE TANK CAPACITY	3L / 0.79 US gal	NUC 244 NX WITHOUT TELEMATICS: 913433 WITH TELEMATICS: 915764	

A

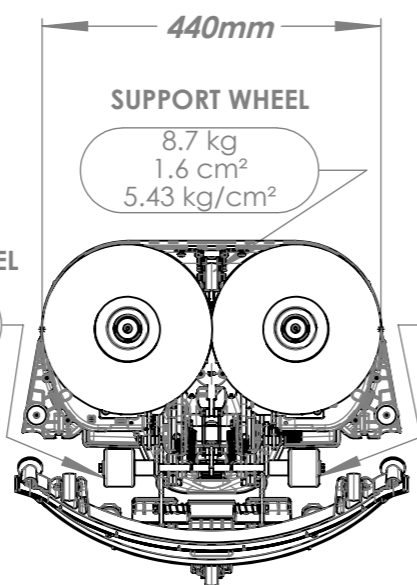
B

C

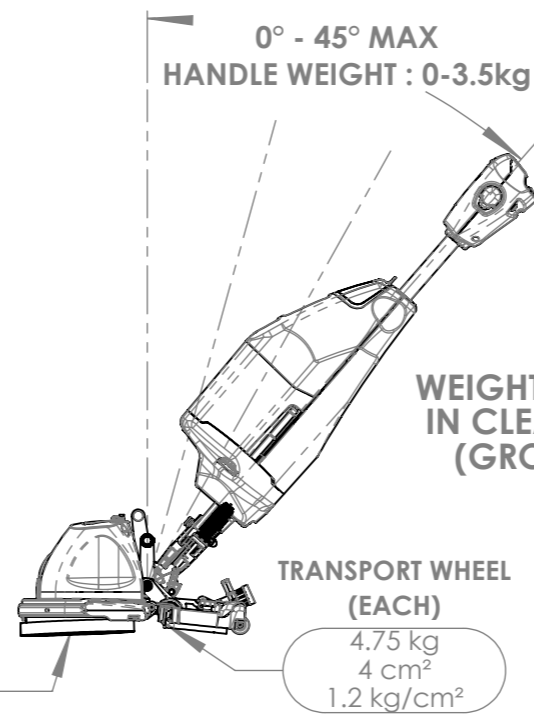
D



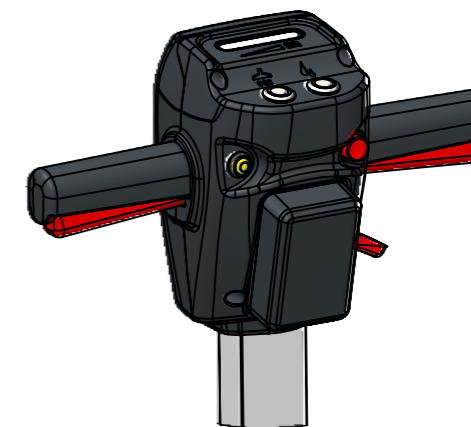
**WEIGHT DISTRIBUTION
IN STORAGE MODE
(GROSS WEIGHT)**



**0° - 45° MAX
HANDLE WEIGHT : 0-3.5kg**



WITH TELEMATICS:



*This article must not contain greater than 0.1% w/w of substances that are on the candidate list for Annex XIV of the REACH regulations
All components must be ROHS compliant.*

Numatic INTERNATIONAL LTD MILLFIELD ROAD, CHARD, SOMERSET ENGLAND TA20 2GB

THE EXAMPLE SHOWN DETAILS THE METHOD USED FOR IDENTIFYING CRITICAL (INSPECTION) DIMENSIONS WHERE APPLICABLE

TOLERANCES:- LINEAR: 0 DECIMAL PLACES = +/- 1.0mm
1 DECIMAL PLACE = +/- 0.25mm ANGULAR:-
(UNLESS OTHERWISE STATED) 2 DECIMAL PLACES = +/- 0.05mm +/- 0.5 DEGREE

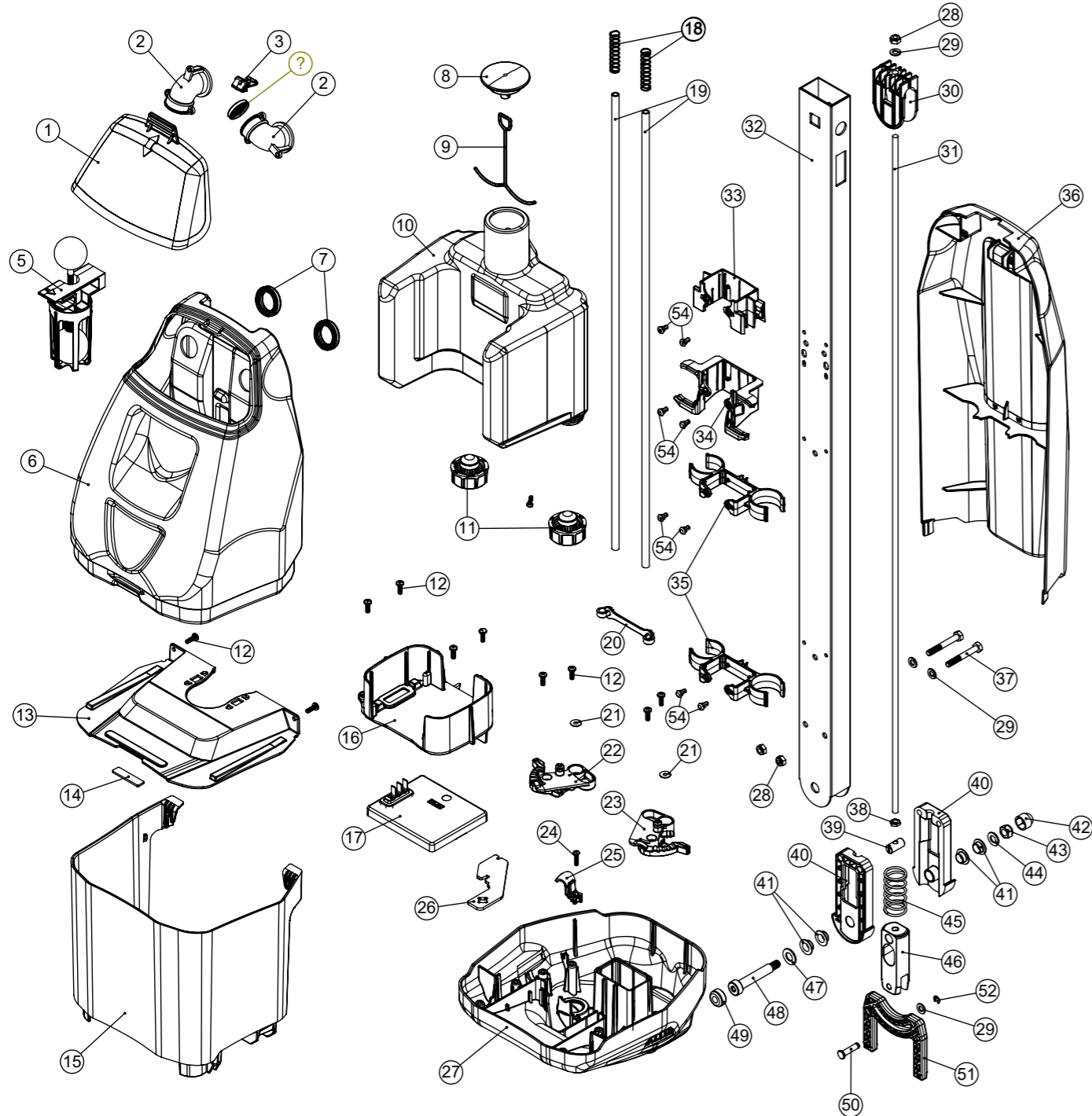
A09	TELEMATICS CONFIGURATION ADDED [PRJ000263]	DRAWN: Charlie Camsell	APPD: KD	DATE: 16/09/2022	PRINT SIZE A3	TITLE:- NUC 244 NX TECHNICAL SPECIFICATIONS	DIMENSIONS IN MILLIMETERS	MATERIAL:-	ITEM No(s):- 913433, 915764	DRG No:- DRW-35256
-----	--	-------------------------------	-----------------	-------------------------	-------------------------	---	--	-------------------	---------------------------------------	------------------------------

Numatic International Spare Parts

Model No: MID SECTION ASSEMBLY EXPLODED DRAWING

NB: FOR WIRING SEE DRAWING: DRW-32894

911919
DRAWING: DRW-31385 ISS:A15
24/07/2023



Numatic International Spare Parts

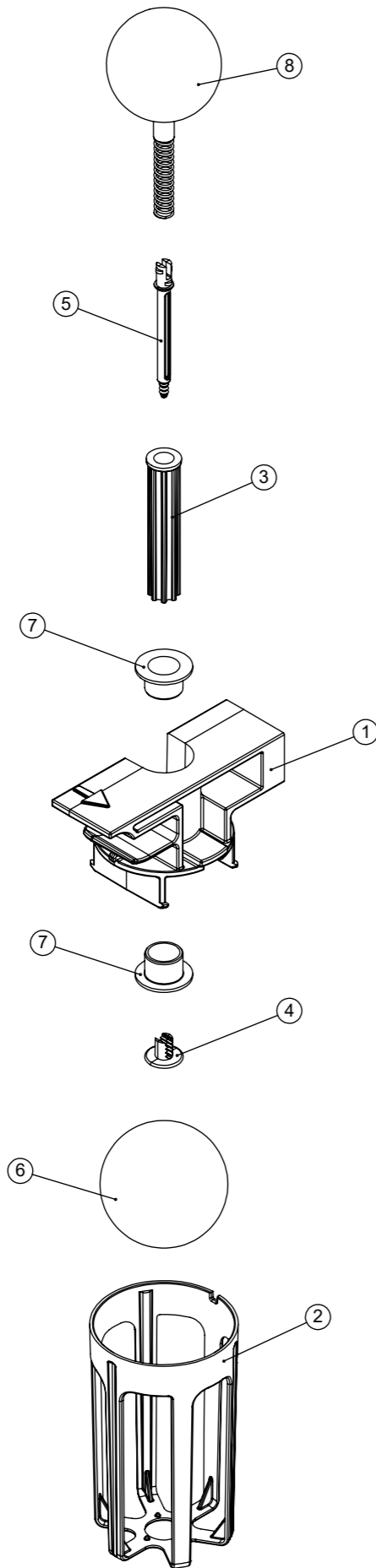
Model No: MID SECTION ASSEMBLY EXPLODED DRAWING

ITEM:	PART No:	Description	Comments	QTY.
1		CSD P5 SEPARATOR MOULDING AND SEAL OVERMOULD		1
2	911502	SEPARATOR PORT MOULDING		2
3		SPRING LATCH MOULDING		1
4	911286	PORT FILTER DISC		1
5	911798	BALL SHUT OFF ASSEMBLY		1
6	911499	WASTE TANK P5 SHELL WITH LUGS BLOW MOULDING		1
7	911282	GASKET SEAL RING MOULDING		2
8	911280	CAP BUNG WITH VENT HOLE MOULDING		1
9	911281	TETHER MOULDING		1
10	911500	CSD P5 CLEAN TANK BLOW MOULDING		1
11	911815	CHECK VALVE TANK COUPLING		2
12	219569	No8 X 1/2 INCH LONG POZI PAN STAINLESS STEEL PLASTITE SCREW	1.6Nm ± 0.1	10
13	911534	WT SHELF MOULDING		1
14	911786	FOAM PAD 40 X 10 X 2MM		1
15	913483	WT SUPPORT MOULDING PRINTED NUMATIC 244NX		1
16	911537	BATTERY SUPPORT MOULDING		1
17	910930	CSD CONTROL PCB ASSEMBLY		1
18	219326	50MM LONG COMPRESSION SPRING		2
19	913691	CLEAR SILICONE TUBE 5MM ID X 8MM OD X 608MM LONG		2
20	913695	HOSE RETAINER		1
21	907391	M4 A2 S/ST FLAT WASHER DIN9021 (REF: WAWSFM400X500)		2
22	912597	FC VALVE LEFT		1
23	912596	FC VALVE RIGHT		1
24	N/A	NO6.5/8 INCH LG.POZI-PAN.SCREW.STAINLESS STEEL.PLASTITE	1.6Nm ± 0.1	1
25	911272	WIRE CLAMP MOULDING		1
26	913062	RETAINER PLATE		1
27	913661	NUC HANDLE BASE MOULDING PRINTED WATER FLOW		1
28	219642	M6 STAINLESS STEEL NYLON INSERT NUT		3
29	219870	M6 FORM A WASHER STAINLESS STEEL		4
30	910730	HANDLE RELEASE SLIDER		1
31	910882	HANDLE LOCKING ROD		1
32	912443	HANDLE TUBE PAINTED SILVER		1
33	915815	TANK LOCK HOUSING WRAP-AROUND MOULDING		1
34	915816	HOSE END WRAP-AROUND MOULDING		1
35	913719	DUAL HOSE CLIP WRAP AROUND MOULDING		2
36	911811	REAR COVER ASSEMBLY		1
37	219896	M6 X 45MM LONG HEXAGONAL STAINLESS STEEL BOLT		2
38	219099	M6 HALF NUT		1
39	911814	M6 X 20MM CROSS DOWEL BARREL NUT Z/PL		1
40	910715	HANDLE PIVOT MOULDING		2
41	208330	IGUS BEARING (GFM 101206)		4
42	903260	M8 BOLT AND NUT CAP		1
43	219639	M8 STAINLESS STEEL NYLON INSERT NUT		1
44	219578	M8 FORM A STAINLESS STEEL WASHER		1
45	208782	SPRING (C5517490)		1
46	910881	ROLL LATCH		1
47	219903	M10 FORM A STAINLESS STEEL WASHER		1
48	208333	M8 X 10 X 50MM LONG HEX SOCKET SHOULDER BOLT	10.0Nm ± 1.0	1
49	237632	SHOULDER BOLT COVER		1
50	912703	6MM X 22MM S/S CLEVIS PIN WITH E-CLIP GROOVE		1
51	910714	PITCH LATCH		1
52	912704	E-CLIP RSM0040 DIN 6799		1
53	914668	No.6 X 3/8 A2 S/ST PZ PAN HD S/TAPPER SCREW (TYPE B FLAT END) DIN7981-F		1
54	913357	BLACK UL94 V-0 NYLON ROUND SNAP PUSH-IN RIVET SRVO-4060B		8

Numatic International Spare Parts

Model No: BALL SHUT OFF ASSEMBLY EXPLODED DRAWING

911798
DRAWING: DRW-31389 ISS:A02
15/07/2020



Numatic International Spare Parts

Model No: BALL SHUT OFF ASSEMBLY EXPLODED DRAWING

ITEM:	PART No:	Description	QTY.
1	911792	BALL SYSTEM MOUNT MOULDING	1
2	911796	BALL CAGE	1
3	911793	BALL SUPPORT PILLAR	1
4	911795	PILLAR END CAP	1
5	911794	PILLAR SPRING LOCK PIN	1
6	911797	PING PONG BALL	1
7	208331	IGUS BEARING (GFM 101209)	2
8	911799	HOLLOW BALL AND SPRING COMBINED	1

Numatic International Spare Parts

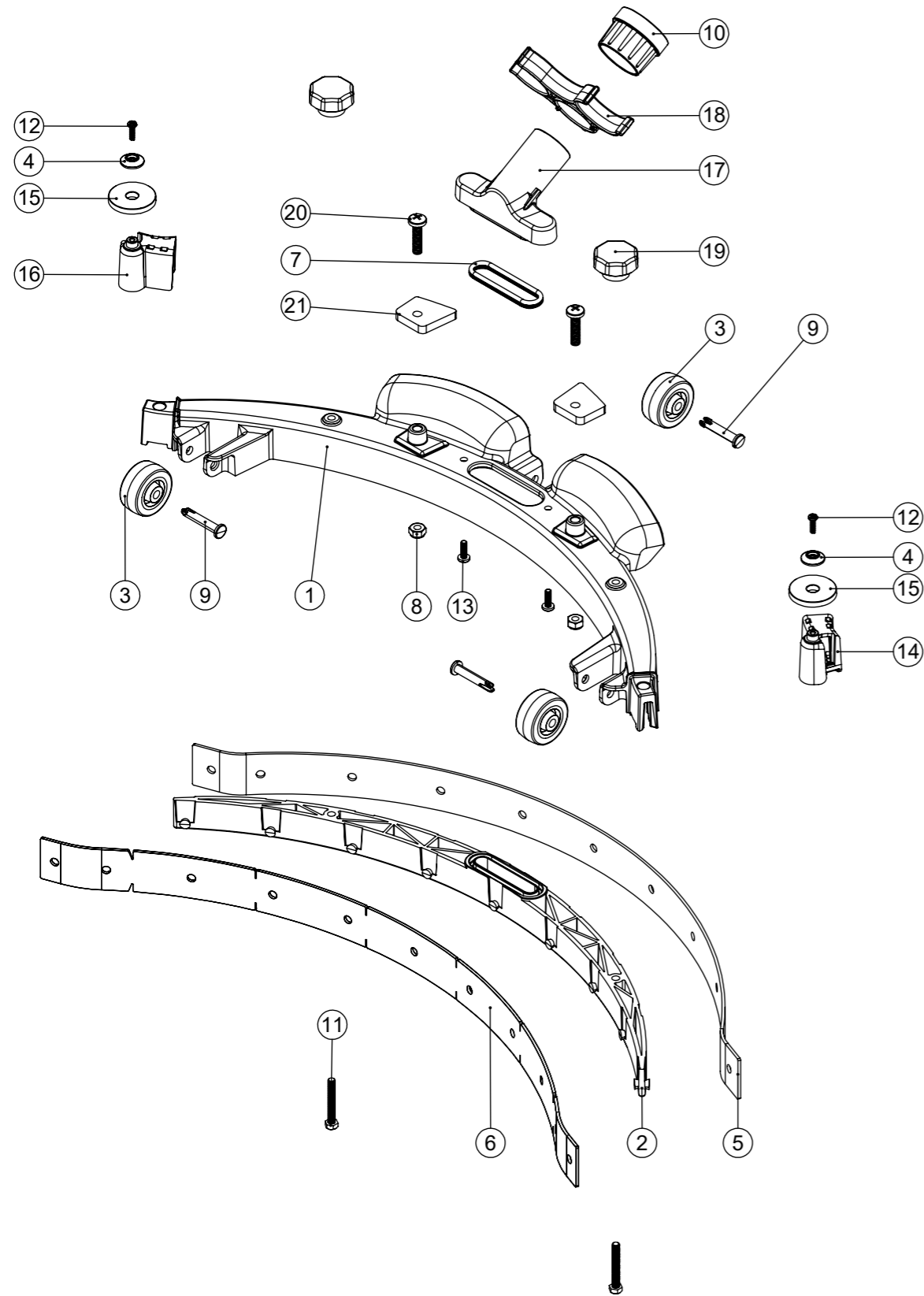
SQUEEGEE ASSEMBLY EXPLODED DRAWING

Model No:

911916

DRAWING: DRW-31959 ISS:A08

21/02/2022



Numatic International Spare Parts

SQUEEGEE ASSEMBLY EXPLODED DRAWING

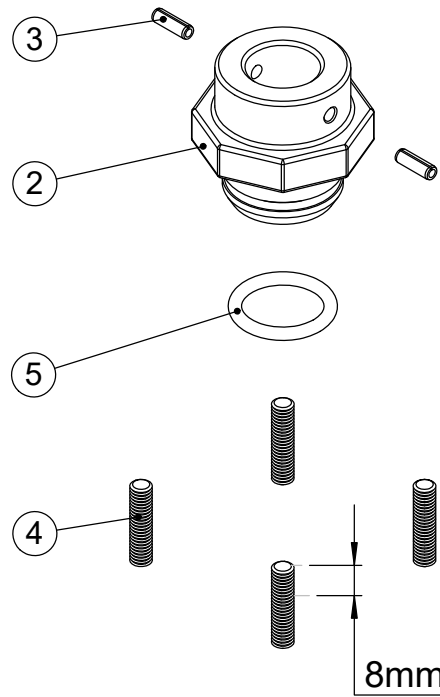
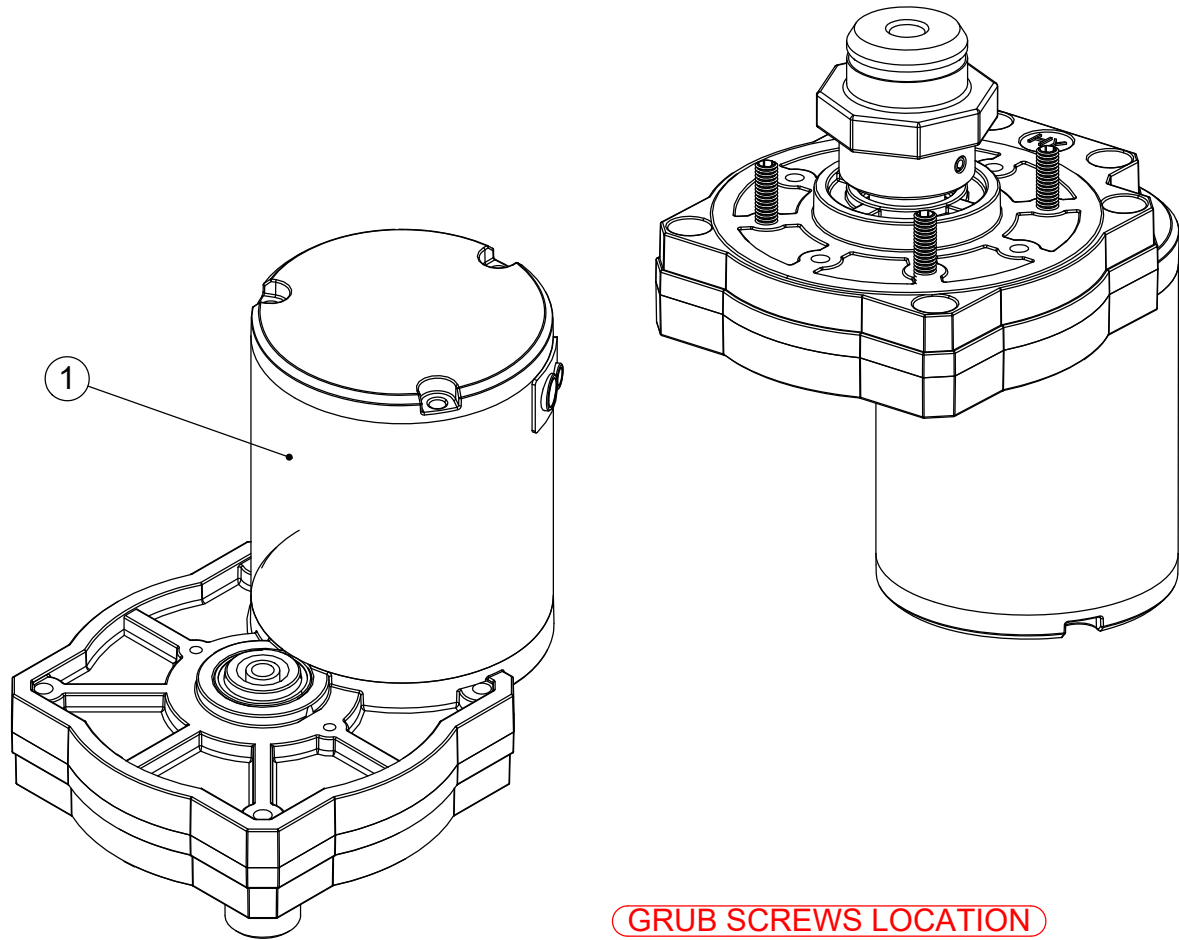
Model No:

POS.	ITEM No.	DESCRIPTION	COMMENTS	QTY.
1	913895	SQUEEGEE OUTER DIE CASTING PAINTED SILVER		1
2	911516	CSD SQUEEGEE INNER MOULDING FOR DIE CASTING		1
3	208454	TTB 1840 SQUEEGEE WHEEL		3
4	208603	NYLON FINISHING WASHER (BLACK)		2
5	911519	CSD SQUEEGEE REAR BLADE		1
6	911518	CSD SQUEEGEE FRONT BLADE		1
7	209077	DOOR SEAL EXTRUSION		1
8	219642	M6 STAINLESS STEEL NYLON INSERT NUT		2
9	911517	SNAP LOCK PIN		3
10	910970	32MM HOSE CUFF		1
11	905554	M5 X 35MM LONG HEXAGONAL HEAD SCREW ST/ST	5.0Nm ± 0.5	2
12	291053	3.5 X 12MM POZI PAN PLASTITE SCREW S/S	1.6Nm ± 0.1	2
13	219569	No8 X 1/2 INCH LONG POZI PAN STAINLESS STEEL PLASTITE SCREW	2.6Nm ± 0.1	2
14	911511	LEFT HAND CSD420 FLOOR TOOL CLIP		1
15	237266	BUFFER WHEEL		2
16	911512	RIGHT HAND CSD420 FLOOR TOOL CLIP		1
17	912051	HOSE TRAP INLET		1
18	912052	HOSE TRAP CLIP		1
19	208455	TTB 1840 SQUEEGEE KNOB		2
20	902232	M6 X 25MM LONG POZI PAN SCREW STAINLESS STEEL		2
21	914782	NUC 244 SQUEEGEE SNAP PLATE	Peel foil and clean dirty surfaces	2

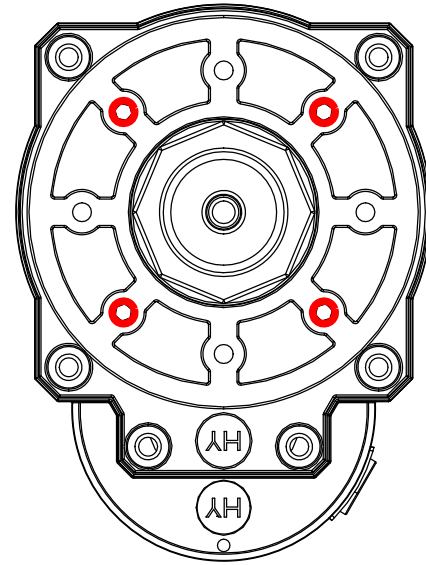
Numatic International Spare Parts

Model No: BRUSH MOTOR SUB ASSEMBLY

911807
DRAWING: DRW-32517 ISS:A07
23/05/2022



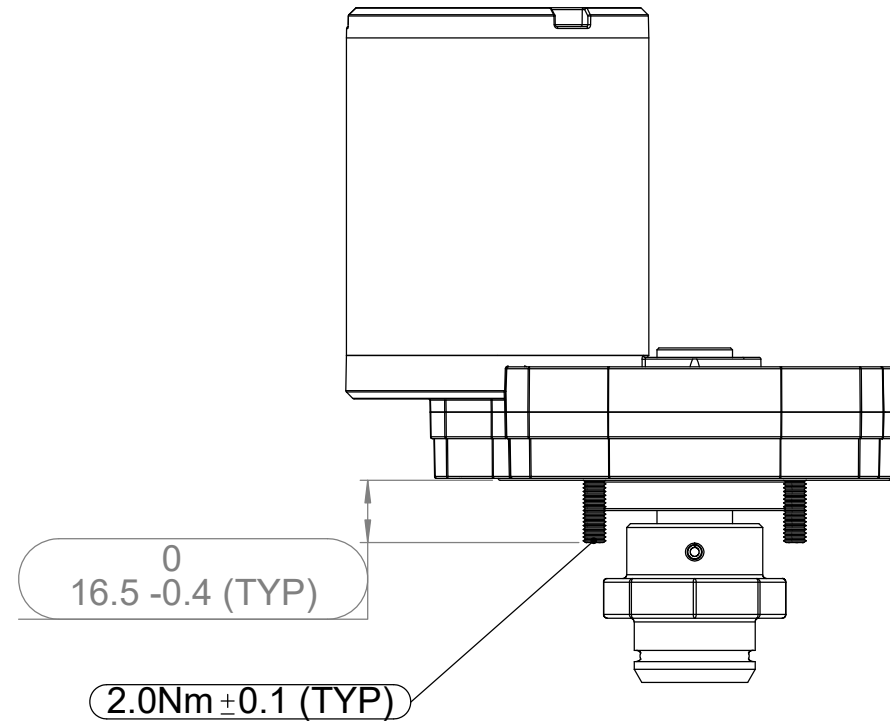
GRUB SCREWS LOCATION



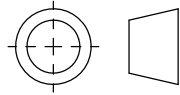
Numatic International Spare Parts

Model No: BRUSH MOTOR SUB ASSEMBLY

ITEM:	PART No:	DESCRIPTION	COMMENTS	QTY.
1	910623	HENGYE HC80B09 36V DC DIGITAL MOTOR		1
2	910739	CSD420 CHUCK	ALTERNATIVE ITEM NUMBERS: 914556, 914563, 914618	1
3	911808	SLOTTED SPRING PIN - SPIROL SLTP 4. X 12. D K ISO 8752		2
4	913375	M6 X 25 A2 S/ST HEX SKT SET CUP PT DI		4
5	915418	Silicone O-Ring, 21.82mm Bore		1

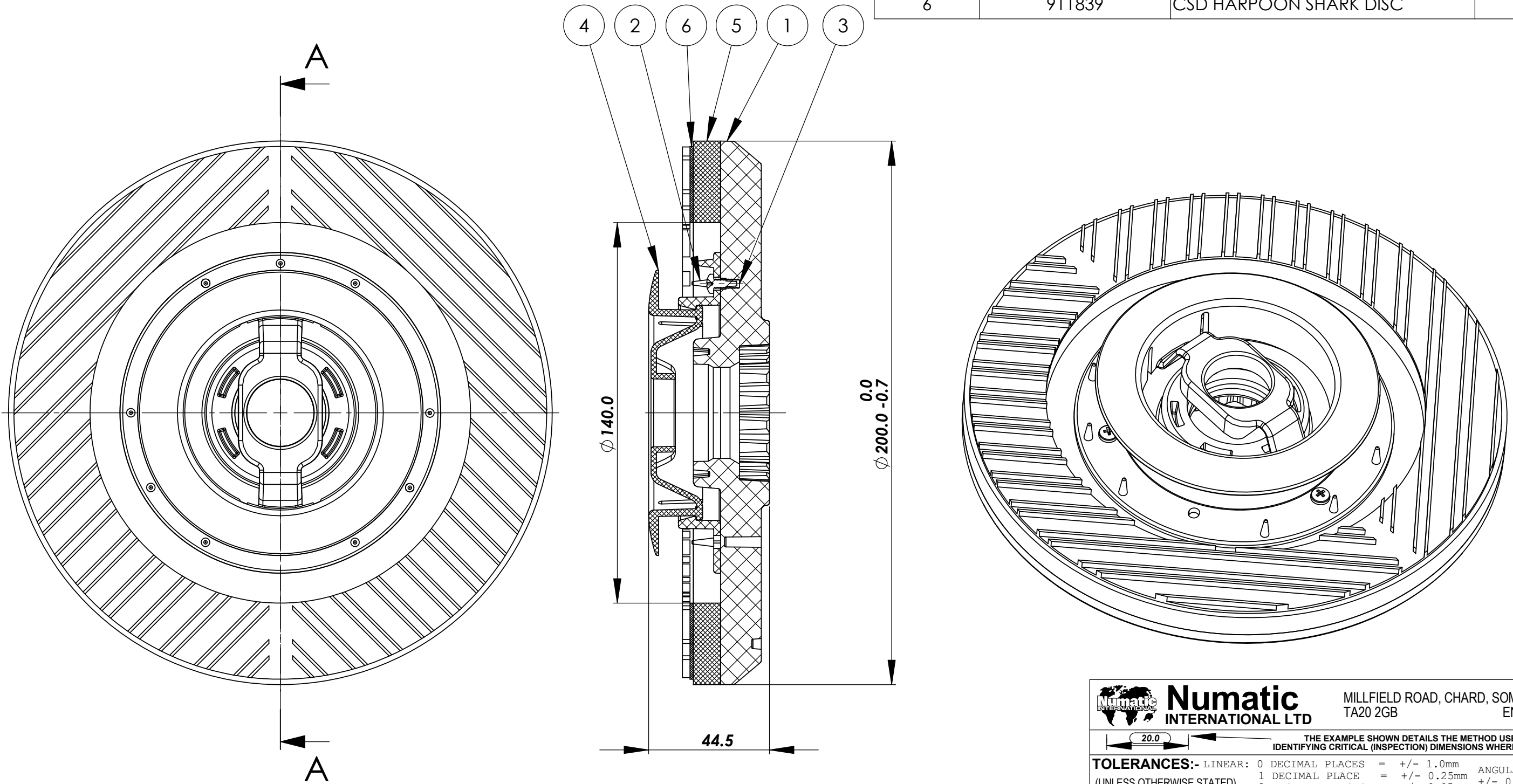


THIRD ANGLE PROJECTION



POS.	ITEM No.	DESCRIPTION	QTY.
1	911842	CSD DRIVE BOARD	1
2	911838	CSD PADLOCK CENTRE MOULDING	1
3	902533	No6 X 3/8 INCH LONG POZI PAN SELF TAP SCREW STAINLESS STEEL	3
4	911835	CSD PADLOCK CLIP MOULDING	1
5	911840	CSD DRIVE BOARD FOAM PAD	1
6	911839	CSD HARPOON SHARK DISC	1

Section A-A
Scale 1 : 1.5



NOTES:-

1. SUPPLIER REF NUMBER: 52-2287-PAD

This article must not contain greater than 0.1% w/w of substances that are on the candidate list for Annex XIV of the REACH regulations. All components must be ROHS compliant.

TOOL NUMBER: -

WEIGHT: **0.49 kg**

Numatic INTERNATIONAL LTD MILLFIELD ROAD, CHARD, SOMERSET ENGLAND TA20 2GB

20.0 THE EXAMPLE SHOWN DETAILS THE METHOD USED FOR IDENTIFYING CRITICAL (INSPECTION) DIMENSIONS WHERE APPLICABLE

TOLERANCES:- LINEAR: 0 DECIMAL PLACES = +/- 1.0mm
1 DECIMAL PLACE = +/- 0.25mm ANGULAR:-
(UNLESS OTHERWISE STATED) 2 DECIMAL PLACES = +/- 0.05mm +/- 0.5 DEGREE

TITLE:- NUC.244.PAD DRIVE BOARD ASSEMBLED

DIMENSIONS IN MILLIMETERS MATERIAL:- ITEM No(s):-
NOT TO SCALE FINISH:- 911844

DRG No:- DRW-32681

A05 ASM CORRECTED & ITEM 3 BALLOON RESTORED. PRJ004562

DRAWN: APPD: DATE:

THIS DRAWING IS COPYRIGHT AND IS THE PROPERTY OF NUMATIC INTERNATIONAL LTD. AND MUST NOT BE USED WITHOUT THEIR KNOWLEDGE NOR COMMUNICATED TO ANY PERSON OR COMPANY.

PRINT SIZE

A3

REVISION: CHANGE DETAIL:

Michaela Abbott KD 03/03/2022

1

ST_Numatic_A3.sldprt 20030224

3

4

5

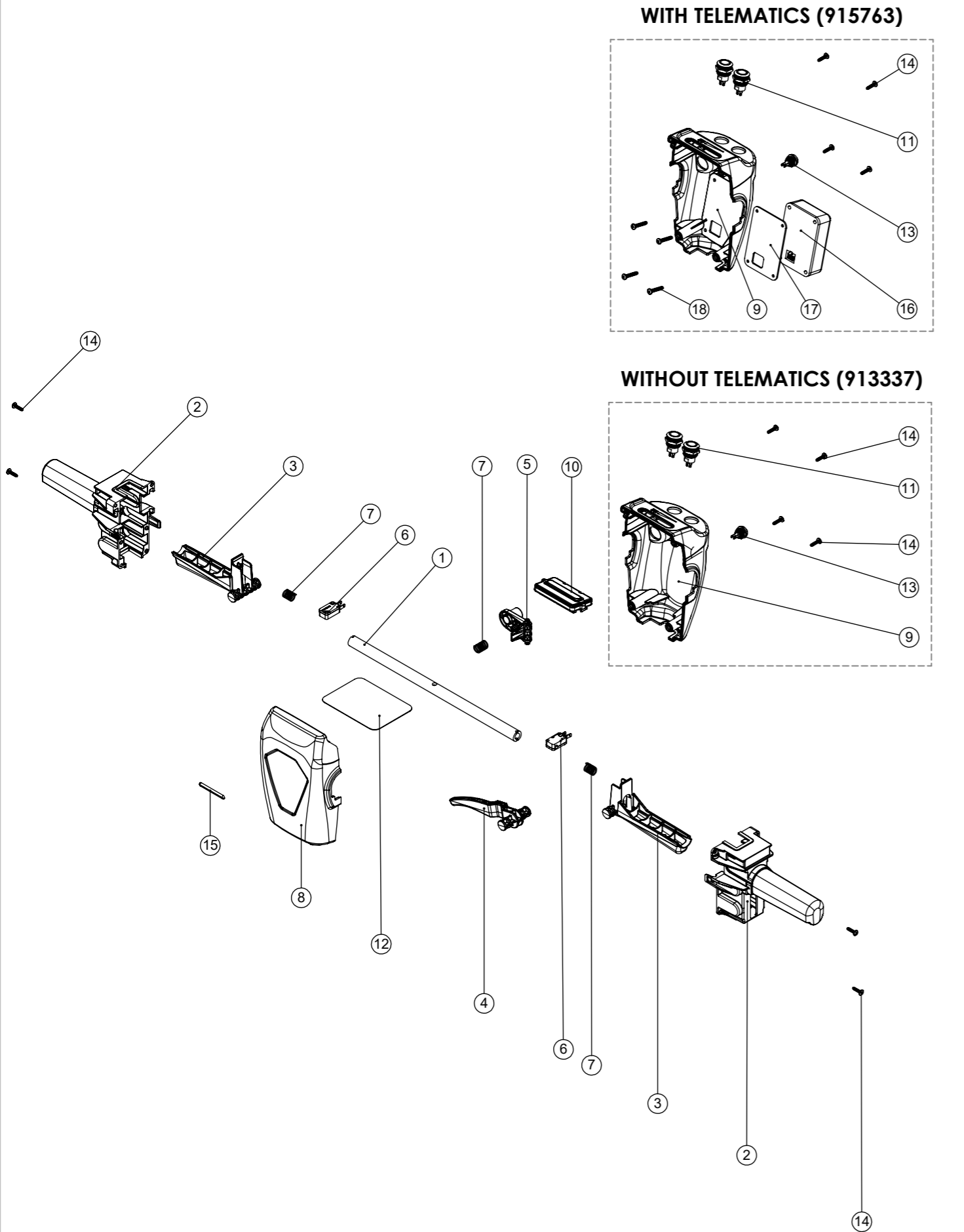
6

Numatic International Spare Parts

Model No: 244 HANDLE ASSEMBLY EXPLODED DRAWING

913337, 915763
DRAWING: DRW-35076 ISS:A05
6/01/2023

NB: FOR WIRING SEE DRAWING: DRW-34941



Numatic International Spare Parts

Model No: 244 HANDLE ASSEMBLY EXPLODED DRAWING

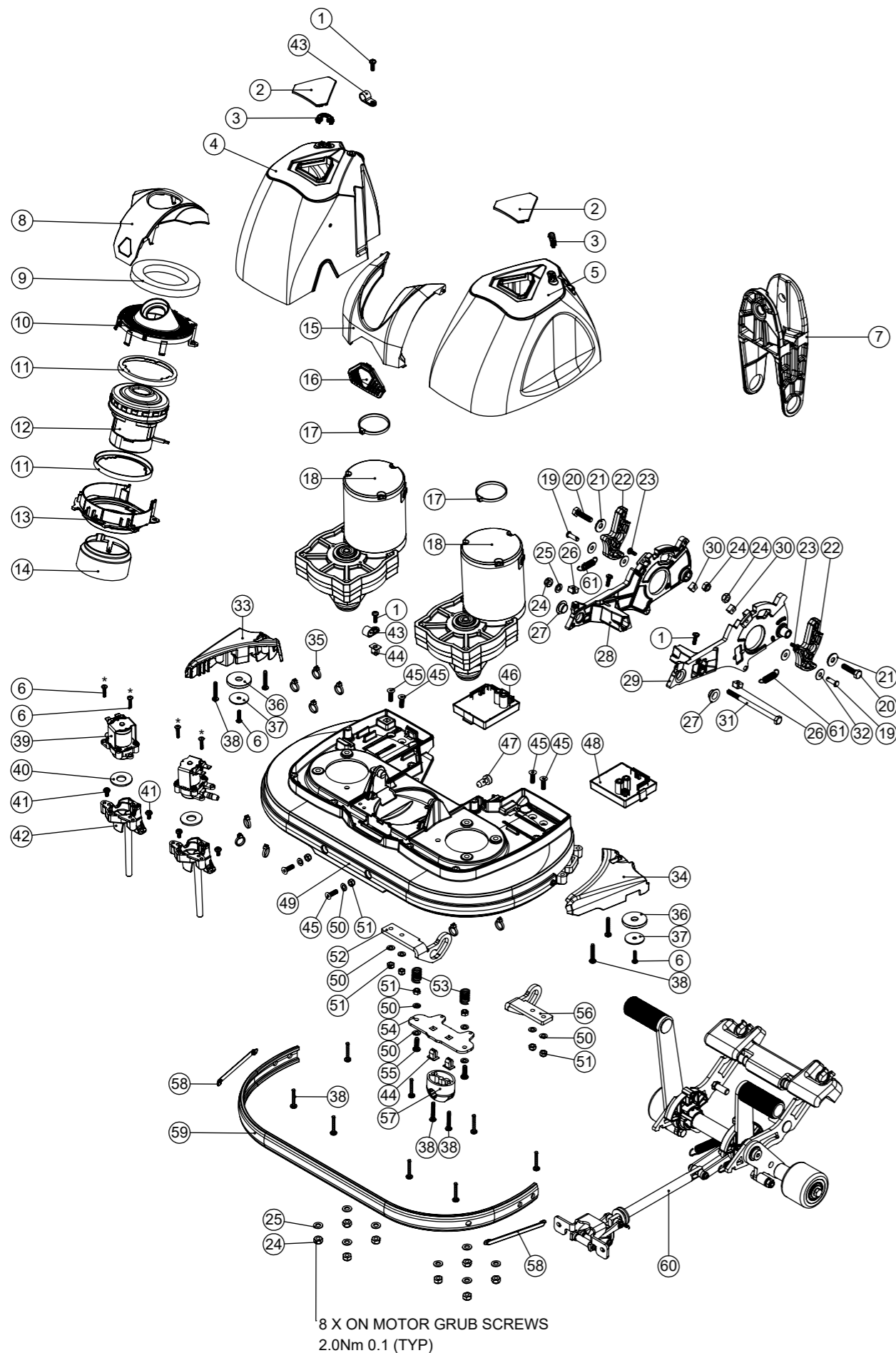
ITEM NO:	PART NO:	DESCRIPTION:	COMMENTS	Default/QTY.
1	910887	HANDLE CROSS TUBE		1
2	910726	HANDLE GRIP		2
3	910727	HANDLE TRIGGER		2
4	910733	HANDLE RELEASE LEVER		1
5	910734	HANDLE LOCK BUTTON		1
6	229483	SNAP ACTION SWITCH		2
7	219803	TRIGGER COMPRESSION SPRING		3
8	910850	FRONT HANDLE COVER MOULDING		1
9	910851	REAR HANDLE COVER MOULDING	913337 ONLY	1
	912068	[TELEMATICS] TTB244 HANDLE REAR COVER MOULDING	915763 ONLY	1
10	910616	CSD HANDLE PCB ENCLOSURE ASSEMBLY		1
11	910841	ILLUMINATED TOGGLE SWITCH 22MM DIA		2
12	912145	HANDLE WIRING PROTECTOR		1
13	913246	ISR3Z1AD500 - YELLOW 12MM SEALED PUSH BUTTON SWITCH		1
14	219370	No8 X 5/8 INCH LONG PLASTITE STAINLESS STEEL SCREW	TORQUE TO 2.6Nm	8
15	913456	SELF-ADHESIVE DOMED PROTECTIVE STRIP		1
16	912615	TELEMATICS MODULE ASSEMBLY - GRAPHITE GREY	915763 ONLY	1
17	912151	ADHESIVE PAD - TELEMATICS	915763 ONLY	1
18	219369	No8 X 1 INCH LONG POZI PAN STAINLESS STEEL PLASTITE SCREW	915763 ONLY	4

Numatic International Spare Parts

Model No: BASE ASSEMBLY EXPLODED DRAWING

NB: FOR WIRING SEE DRAWING: DRW-34941

913432
DRAWING: DRW-35236 ISS:A13
20/04/2022



8 X ON MOTOR GRUB SCREWS
2.0Nm 0.1 (TYP)

Numatic International Spare Parts

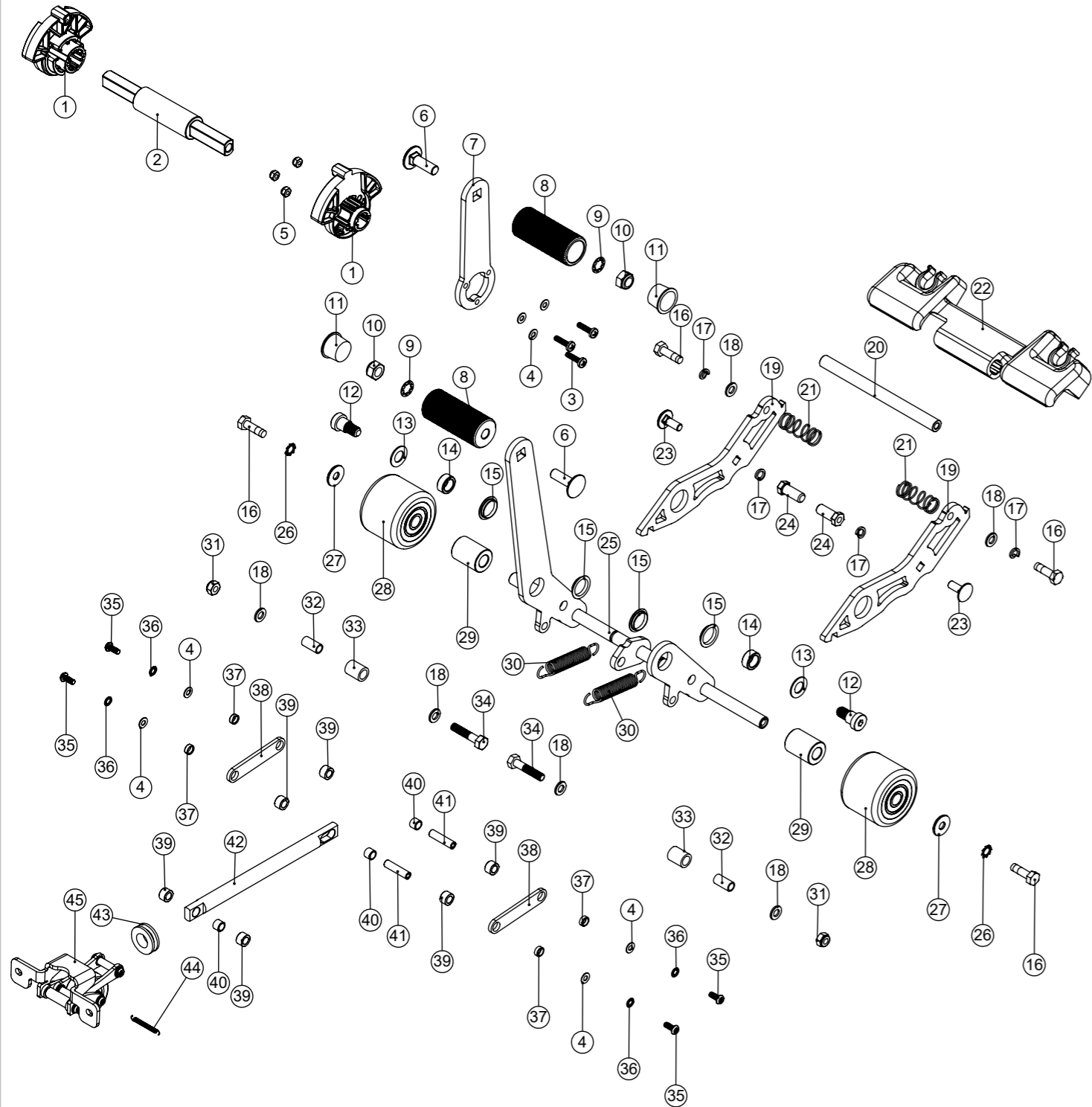
Model No: BASE ASSEMBLY EXPLODED DRAWING

ITEM NO.	PART NO.	DESCRIPTION	COMMENTS	QTY.
1	219569	No8 X 1/2 INCH LONG POZI PAN STAINLESS STEEL PLASTITE SCREW	TORQUE TO 2.6Nm	4
2	911370	VENT CAP MOULDING		2
3	911800	TUBE CLIP MOULDING		2
4	911778	LEFT MOTOR COVER MOULDING		1
5	911779	RIGHT MOTOR COVER MOULDING		1
6	219914	NO6.5/8 INCH LG.POZI-PAN.SCREW.STAINLESS STEEL.PLASTITE	TORQUE TO 1.6Nm * 2.6Nm on Solenoid	6
7	910884	YOKE		1
8	911101	VAC OUTER MOULDING		1
9	911687	FOAM PAD DISC		1
10	911328	VAC TOP SECTION MOULDING		1
11	911339	VAC GASKET		2
12	910622	CINDERSON B74-LS4015010K-021 100W VAC MOTOR		1
13	911330	VAC MIDDLE SECTION MOULDING		1
14	911329	VAC BOTTOM SECTION MOULDING		1
15	911777	CENTRE COVER MOULDING		1
16	911369	GRILL MOULDING		1
17	220138	BLACK CABLE TIE		2
18	911807	BRUSH MOTOR SUB ASSEMBLY		2
19	904922	CLEVIS PIN 3/16 x 5/8 STAINLESS STEEL		2
20	219925	M6 x 25MM LONG STAINLESS STEEL HEX SCREW	TORQUE TO 8.5Nm	2
21	219647	M6 FORM G STAINLESS STEEL WASHER		2
22	910717	FLOOR TOOL LATCH		2
23	291041	NO.6 3/8 INCH LG.POZI-PAN.SCREW.Z/PL/PLASTITE.BLACKODISED	TORQUE TO 1.6Nm	2
24	219642	M6 STAINLESS STEEL NYLON INSERT NUT		11
25	219870	M6 FORM A WASHER STAINLESS STEEL		9
26	911260	SCREW BLOCK		2
27	208330	IGUS BEARING (GFM 101206)		2
28	913289	CSD LEFT DECK LINK ARM CASTING MACHINED HOLE		1
29	913290	CSD RIGHT DECK LINK ARM CASTING MACHINED HOLE		1
30	913286	HANDLE POSITION STOP BLOCK		2
31	291021	M6 X 90MM LONG STAINLESS STEEL HEXAGONAL HEAD BOLT	TORQUE TO 8.5Nm	1
32	219644	M5 FORM G STAINLESS STEEL WASHER		4
33	911263	LEFT DECK WING MOULDING		1
34	911262	RIGHT DECK WING MOULDING		1
35	220844	WHITE CABLE TIE		9
36	237266	BUFFER WHEEL		2
37	219930	M5 X 25MM X 1.5MM THICK A4 STAINLESS STEEL PENNY WASHER		2
38	219369	No8 X 1 INCH LONG POZI PAN STAINLESS STEEL PLASTITE SCREW	TORQUE TO 2.6Nm	14
39	911208	FCD360B-DC24V MEISHUO SOLENOID VALVE		2
40	913408	2MM NEOPRENE CLOSED CELL DISC		2
41	219697	M4 X 8MM LONG POZI PAN STAINLESS STEEL SCREW		4
42	911523	SOLENOID CONNECTOR DOWNPIPE MOULDING		2
43	219393	P CLIP		2
44	900986	NYLON GROMMET NUT (PLASTIC INSERT TO SUIT No 8 PLASTITE SCREW)		3
45	913215	M5 X 16MM SOCKET COUNTERSUNK SCREW STAINLESS STEEL	TORQUE TO 3.5Nm	6
46	910361	36V BLDC MOTOR CONTROLLER (COUNTER CLOCKWISE)	(LEFT)	1
47	913206	BLIND GROMMET (G10-RB62-50-00S)		1
48	910280	36V BLDC MOTOR CONTROLLER (CLOCKWISE)	(RIGHT)	1
49	913889	DECK CASTING PROCESSED PAINTED SILVER		1
50	219355	M5 FORM A STAINLESS STEEL WASHER		10
51	219633	M5 STAINLESS STEEL NYLON INSERT NUT		8
52	913347	LATCH PLATE R/H		1
53	219803	TRIGGER COMPRESSION SPRING		2
54	913248	BEARING MOUNTING PLATE		1
55	219785	M5 X 16MM LONG BUTTON HEAD STAINLESS STEEL SCREW	TORQUE TO 3.5Nm	2
56	913348	LATCH PLATE L/H		1
57	913213	RJUMP-05-12 - IGUS - DRYLIN® RJUMP SPLIT HOUSING		1
58	913007	TRIM GLIDE MOULDING		2
59	911003	TRIM EXTRUSION		1
60	913365	SQUEEGEE AND LIFTING MECHANISM ASSEMBLY		1
61	914094	EXTENSION SPRING (32MM)		2

Numatic International Spare Parts

Model No: SQUEEGEE AND LIFTING MECHANISM ASSEMBLY
EXPLODED DRAWING

913365
DRAWING: DRW-35122 ISS:A08
20/04/2022



Numatic International Spare Parts

Model No: SQUEEGEE AND LIFTING MECHANISM ASSEMBLY
EXPLODED DRAWING

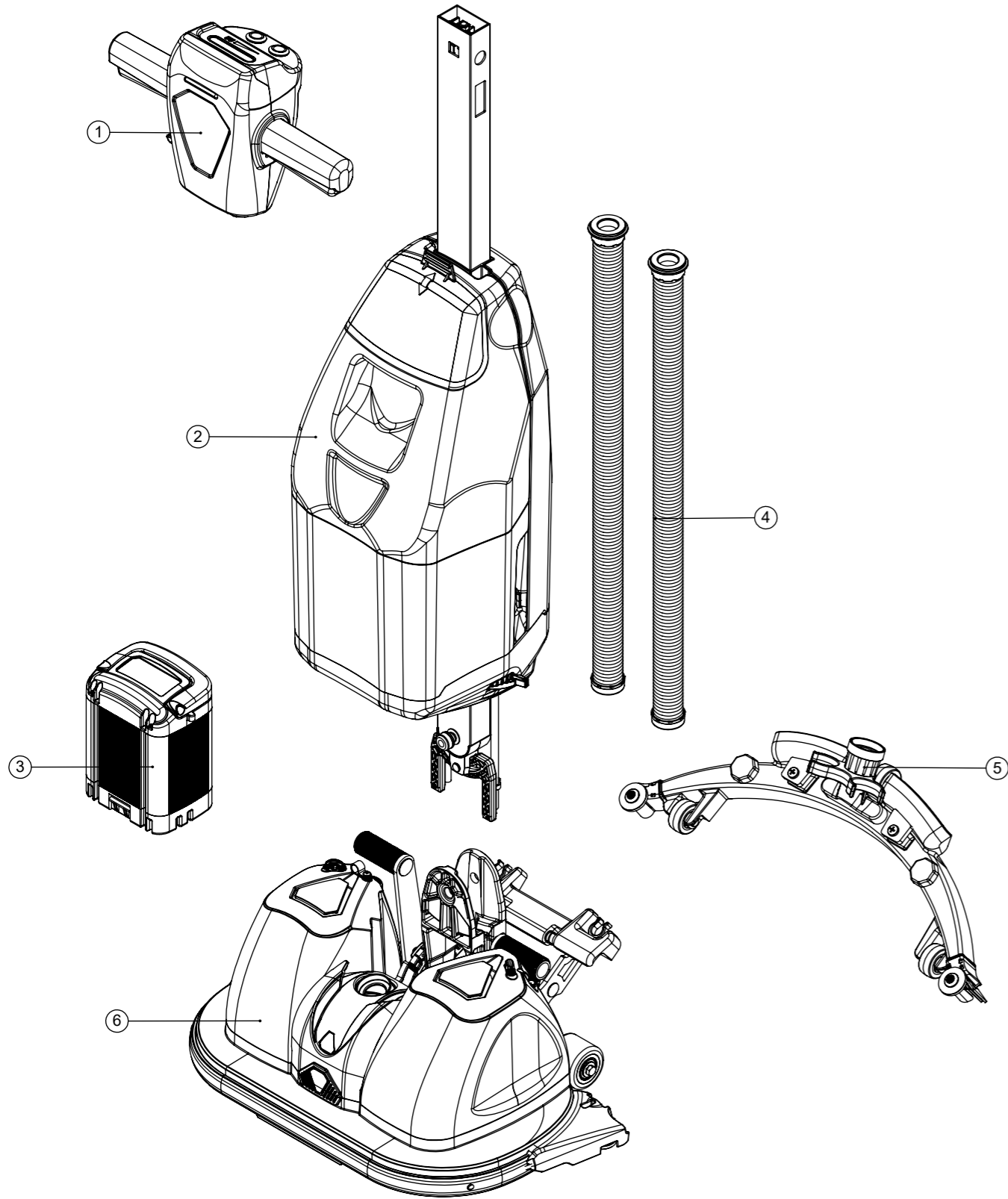
ITEM NO.	PART NO.	DESCRIPTION	COMMENTS	QTY.
1	914421	HUB MOULDING		2
2	910722	AXLE		1
3	219862	M4 X 16MM LONG POZI PAN STAINLESS STEEL SCREW	TORQUE TO 2.6Nm	3
4	219688	M4 FORM A STAINLESS STEEL WASHER		7
5	219687	M4 STAINLESS STEEL NYLON INSERT NUT		3
6	902010	M8 X 25 COACH BOLT S/S	TORQUE TO 9.5Nm	2
7	914431	FLOOR TOOL PEDAL PLATE		1
8	913614	FOOT PEDAL 1" O/D		2
9	902520	M8 INTERNAL WASHER SHAKEPROOF STAINLESS STEEL		2
10	219639	M8 STAINLESS STEEL NYLON INSERT NUT		2
11	913708	RED TAPERED CAP (11088)		2
12	913378	M8 SHOULDER BOLT, 8MM STAINLESS STEEL (LOW PROFILE)	TORQUE TO 10Nm	2
13	913439	THRUST WASHER (GTM-1018-010)		2
14	913237	SPACER 10.1MM ID X 15MM OD X 6.5MM		2
15	913217	IGUS BEARING (GFM-1516-02)		4
16	291144	M6 X 20MM LG HEX HEAD SCREW STAINLESS STEEL C/W THREADLOCK	TORQUE TO 8.5Nm	4
17	219718	WASHER.M6.SPRING.STAINLESS STEEL		4
18	219870	M6 FORM A WASHER STAINLESS STEEL		6
19	913255	FLOOR TOOL LINK ARM		2
20	910883	SQUEEGEE PIVOT TUBE		1
21	904784	COMPRESSION SPRING C5510990		2
22	911539	CSD FLOOR TOOL PLASTIC PLATE		1
23	291103	M6 X 16 COACH BOLT S/S	TORQUE TO 8.5Nm	2
24	910990	FLOOR TOOL LIFTING PIN		2
25	913270	AXLE SUPPORT WELD ASSEMBLY		1
26	902353	M6 EXTERNAL SHAKEPROOF WASHER STAINLESS STEEL		2
27	219647	M6 FORM G STAINLESS STEEL WASHER		2
28	913272	SUPPORT WHEEL (50MM x 40MM)		2
29	913219	NYLON SPACER 10MM ID X 20MM OD X 27MM LONG		2
30	913557	EXTENSION SPRING - SS304 - 11mm x 65mm		2
31	219642	M6 STAINLESS STEEL NYLON INSERT NUT		2
32	913245	SPACER 6MM OD X 8MM ID X 16MM LONG		2
33	913216	NYLON SPACER 8.2MM ID X 12MM OD X 15MM LONG		2
34	291022	M6 X 30MM LONG STAINLESS STEEL HEXAGONAL HEAD BOLT	TORQUE TO 8.5Nm	2
35	913223	M4 X 10MM TORX BUTTON SCREW - THREAD LOCKING STAINLESS STEEL	TORQUE TO 2.6Nm	4
36	291145	M4 SHAKEPROOF WASHER STAINLESS STEEL		4
37	913207	Ø8 O/D 6MM BORE 3MM WIDTH IGUS BEARING GSM-0608-03		4
38	913264	REAR LINKAGE		2
39	913208	NYLON SPACER 6.2MM ID X 10MM OD X 6MM		6
40	913212	Ø8 O/D 6MM BORE 6MM WIDTH IGUS BEARING GSM-0608-06		3
41	913280	CONNECTING ROD LINK SHAFT		2
42	913346	CONNECTING ROD		1
43	913243	SHAFT BEARING 12.5MM ID X 24MM OD X 7.5MM LONG		1
44	913546	EXTENSION SPRING - SS304 - 3.2mm x 31mm		1
45	913364	FRONT CASTOR ASSEMBLY		1

Numatic International Spare Parts

Model No: NUC 244 NX GENERAL EXPLODED DRAWING

913433
DRAWING: DRW-35252 ISS:A08
25/05/2021

NB: FOR WIRING SEE DRAWING: DRW-34941



Numatic International Spare Parts

Model No: NUC 244 NX GENERAL EXPLODED DRAWING

ITEM NO.	PART NO.	DESCRIPTION	DRAWING NO.	QTY.
1	913337	HANDLE ASSEMBLY	DRW-35076	1
2	N/A	MID SECTION ASSEMBLY	DRW-31385	1
3	909996	BATTERY.36.8700	N/A	1
4	910931	HOSE 600MM LONG 32.8MM OD 24MM ID COMPLETE WITH END FITTINGS	N/A	2
5	911916	SQUEEGEE ASSEMBLY	DRW-31959	1
6	913432	BASE ASSEMBLY	DRW-35236	1
	913847	BASE ASSEMBLY [DE]	DRW-36183	1