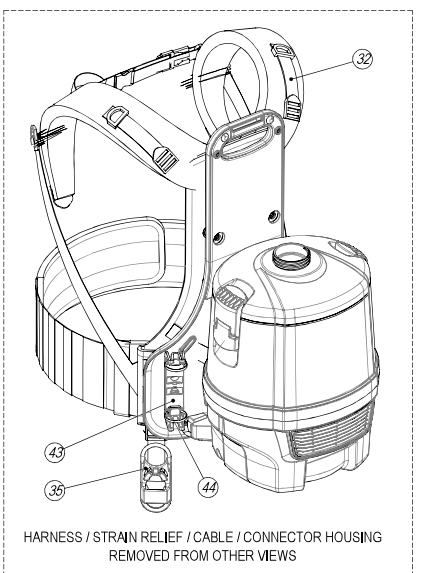
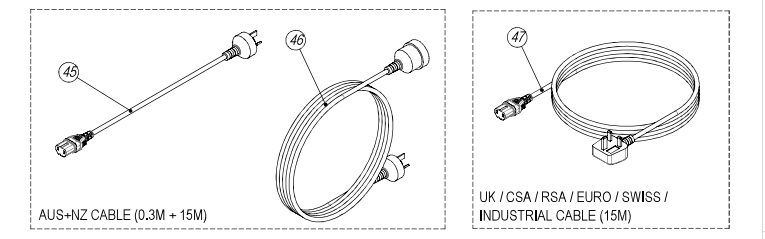


ITEM NO.	PART NUMBER	DESCRIPTION	QTY	COMMENTS
1	910932	DUST CONTAINER LID	1	
2	910945	SHORT BACKPACK TRITEX FILTER (WITH PRE-FILTER)	1	
3	910928	DUST CONTAINER - SHORT	1	
4	219453	M8 MULTISERT	2	
5	910923	DUST CONTAINER BASE (WITH BRASS INSERTS)	1	
6	910940	SILICONE FOAM CORD SEAL	1	
7	910953	TOGGLE RETAINER	2	
8	910971	TOGGLE LEVER	2	SNAP TOGGLE ASSEMBLIES INTO DUST CONTAINER
9	910927	TOGGLE LATCH	2	
10	237089	BOTTOM MOTOR GASKET - CUP MOTOR	1	
11	908847	230V SINGLE STAGE TR MOTOR (DLI 853T) TCO (6210820147)	1	V16, V30, V69, V81 & V83
12	205291	120V SINGLE STAGE THRO FLOW FAN MOTOR (DL1651T) TCO (620)	1	V37 & V69
13	901614	MOUNT-MOTOR	2	
14	911250	CORDED BASE COVER	1	
15	291082	#6 SCREW 1/4 T20 PAN HEAD PAL THREAD FORMING	11	TORQUE TO 2.6Nm ±1.5
16	911248	CORDED CABLE RETAINER	1	
17	911004	RUCKSACK EXHAUST FOAM	1	
18	910950	EXHAUST GRILL	1	
19	911247	CORDED AIRGUIDE	1	
20	911310	SIDE MOTOR FELT	1	
21	230204	NUC18S INLET - VOLEX	1	
22	911788	MOTOR TOP FOAM	1	
23	911361	PLUG ACCESS PANEL	1	
24	219569	No8 X 1/2 INCH LONG POZI PAN STAINLESS STEEL PLASTITE SCREW	1	TORQUE TO 2.6Nm ±1.5
25	237722	RSVRSB REMOTE SWITCH HOLDER - LH SIDE	1	
26	237723	RSVRSB REMOTE SWITCH HOLDER - RH SIDE	1	
27	237082	BLANKING PLUG - ROCKER SWITCH	1	
28	392305	REMOTE CABLE CLAMP	1	
29	902381	ILLUMINATED RED ROCKER SWITCH	1	
30	219667	No8 X 1/2" LONG PLASTITE SCREW	6	TORQUE TO 1.8Nm ±1.5
31	911051	BACK SUPPORT MOULDING (WITHOUT MOUNTING FEATURE)	1	
32	912533	RUCKSACK HARNESS - RSB150/RSV150 (RED)	1	ALL OTHER VARIATIONS V53 ONLY
33	206353	HARNESS PIN	1	
34	291152	NO8.1/2 INCH LG.T20.SCREW.Z/PL.PLASTITE	4	FOR 2x HARNESS PIN SCREWS ONLY. TORQUE TO 1.6Nm ±1.5 ALL OTHER SCREWS TORQUE TO 2.6Nm ±1.5
35	902312	CABLE STRESS RELIEF	1	
36	911002	BACK SUPPORT INSERT	1	
37	219018	M8 SHAKEPROOF WASHER	2	
38	219658	M8 X 22MM LONG SOCKET BOLT	2	TORQUE TO 2.6Nm ±1.5
39	901647	H13 FILTER ASSEMBLY (H2)	1	
40	911013	PRE-MOTOR FILTER BRACKET	1	
41	219045	M5 X 16MM LONG POZI PAN SEMS SCREW	2	
42	219005	M5 FORM G WASHER	2	
43	911290	CABLE CONNECTOR HOUSING	1	V81 ONLY
44	220007	BLACK CABLE TIE	2	V81 ONLY
45	910473	0.3MT X 1MM X 2CORE CABLE (NUC17S + PLUG) AUS-NZ PLUG	1	V81 ONLY
46	910477	15MT X 1MM X 3CORE EXTENSION CABLE AUS-NZ PLUG	1	V81 ONLY
	910610	15MT X 1MM X 2CORE CABLE (NUC17S + PLUG) UK PLUG		V16 ONLY
	911347	15MT X 1MM X 2CORE CABLE (NUC17S + PLUG) EURO PLUG		V30 ONLY
	911346	15MT X 1MM X 2CORE CABLE (NUC17S + PLUG) SWISS PLUG		V53 ONLY
	912333	15MT X 1MM X 2CORE CABLE (NUC17S + PLUG) CSA PLUG		V69 ONLY
	910481	15MT X 1MM X 2CORE CABLE (NUC17S + PLUG) RSA PLUG		V83 ONLY
	911486	15MT X 1MM X 2CORE CABLE (NUC17S + PLUG) INDUSTRIAL PLUG		V37 ONLY



**NUMATIC INTERNATIONAL LTD**  
 MILLFIELD ROAD, CHARD, SOMERSET TA20 2GB ENGLAND

**NUMATIC INTERNATIONAL LTD**

THE EXAMPLE SHOWN DETAILS THE METHOD USED FOR IDENTIFYING CRITICAL DIMENSIONS WHERE APPLICABLE

LINEAR: 0 DECIMAL PLACE	-/+ 1.0mm	ANGULAR: -
1 DECIMAL PLACE	-/+ 0.25mm	+/- 0.5 DEGREE
2 DECIMAL PLACE	-/+ 0.05mm	

**TOLERANCES - (UNLESS OTHERWISE STATED)**

**TITLE:** RSV150H (CORDED BACKPACK WITH PRE-FILTER) - GA / EXPLODED DRAWINGS

**MATERIAL:** SEE TABLE

**ITEM No(s):** 911323,911322,911321,911320,911319,911318,911315

**FINISH:** N/A

**DRG No:-**

*Any Component that will be touched by the operator must be PAH tested.*  
*This article must not contain greater than 0.1% w/w of substances that are on the candidate list for Annex XIV of the REACH regulations*  
*All components must be ROHS compliant.*

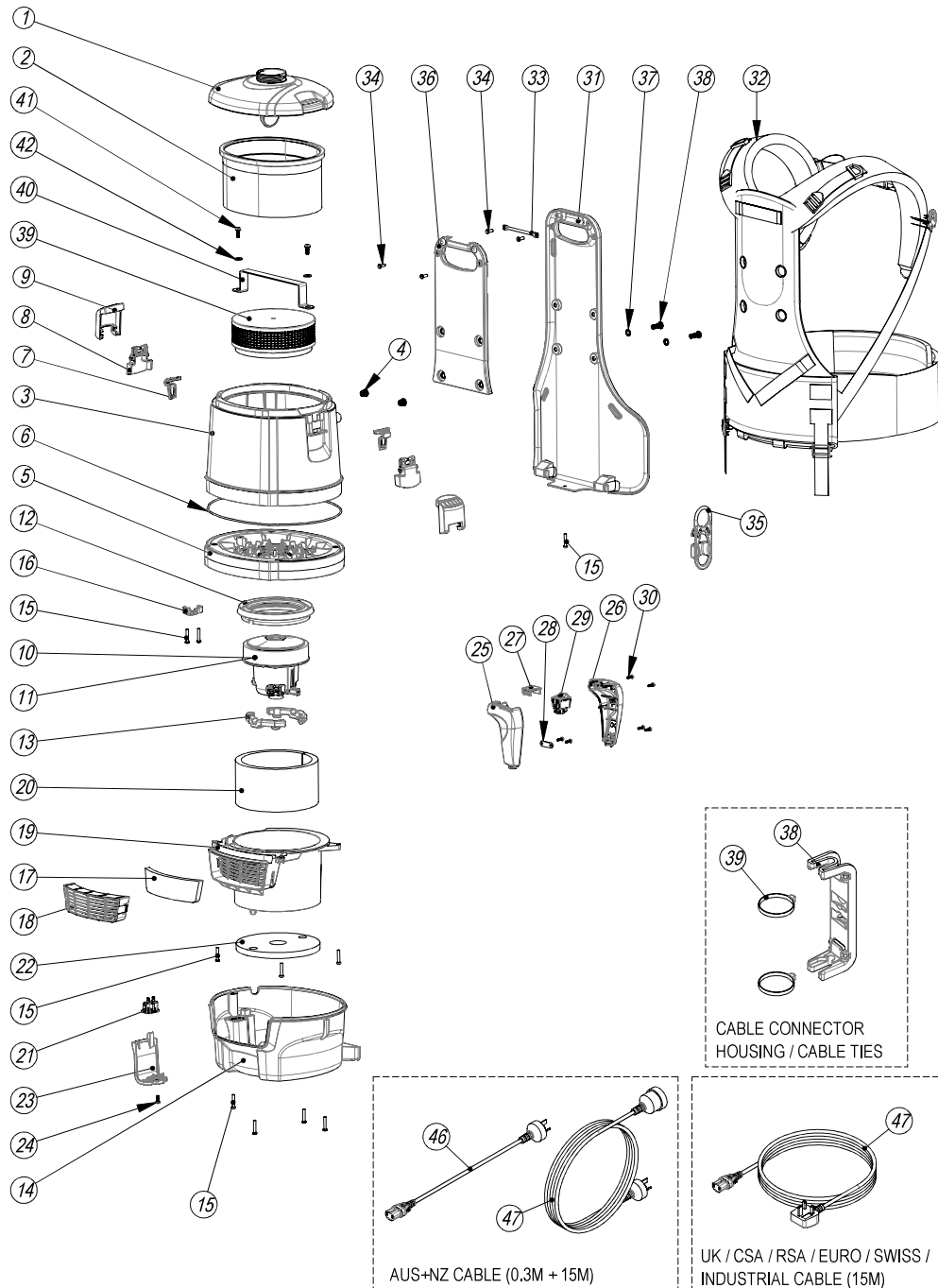
# Numatic International Spare Parts

911323,911322,911321,911320,911319,911318

,911465 DRAWING: DRW-31749 ISS:A09

**Model No:** RSV150H (CORDED BACKPACK WITH PRE-FILTER) - GA / EXPLODED DRAWINGS 06/09/2019

NB: FOR WIRING SEE DRAWING: DRW-31938 & DRW-31941



# Numatic International Spare Parts

**Model No:** RSV150H (CORDED BACKPACK WITH PRE-FILTER) - GA / EXPLODED DRAWINGS

ITEM NO.	PART NO.	DESCRIPTION	QTY	COMMENTS:
1	910932	DUST CONTAINER LID	1	
2	910945	SHORT BACKPACK TRITEX FILTER (WITH PRE-FILTER)	1	
3	910928	DUST CONTAINER - SHORT	1	
4	219453	M8 MULTISERT	2	
5	910923	DUST CONTAINER BASE (WITH BRASS INSERTS)	1	
6	910940	SILICONE FOAM CORD SEAL	1	
7	910953	TOGGLE RETAINER	2	
8	910971	TOGGLE LEVER	2	SNAP TOGGLE ASSEMBLIES INTO DUST CONTAINER
9	910927	TOGGLE LATCH	2	
10	908947	230V SINGLE STAGE TF MOTOR (DLI 653T) TCO (6210820147)	1	V16, V30, V69, V81 & V83
11	205291	120V SINGLE STAGE THRO FLOW FAN MOTOR (DL1651T) TCO (620)	1	V37 & V69
12	237089	BOTTOM MOTOR GASKET - CUP MOTOR	1	
13	901614	MOUNT-MOTOR	2	
14	911250	CORDED BASE COVER	1	
15	291082	#8 SCREW 1" L T20 PAN HEAD P/L THREAD FORMING	11	TORQUE TO 2.6Nm ±1.5
16	911248	CORDED CABLE RETAINER	1	
17	911004	RUCKSACK EXHAUST FOAM	1	
18	910950	EXHAUST GRILL	1	
19	911247	CORDED AIRGUIDE	1	
20	911310	SIDE MOTOR FELT	1	
21	230204	NUC18S INLET - VOLEX	1	
22	911788	MOTOR TOP FOAM	1	
23	911361	PLUG ACCESS PANEL	1	
24	219569	No8 X 1/2 INCH LONG POZI PAN STAINLESS STEEL PLASTITE SCREW	1	TORQUE TO 2.6Nm ±1.5
25	237722	RSV/RSB REMOTE SWITCH HOLDER - LH SIDE	1	
26	237723	RSV/RSB REMOTE SWITCH HOLDER - RH SIDE	1	
27	237082	BLANKING PLUG - ROCKER SWITCH	1	
28	392305	REMOTE CABLE CLAMP	1	
29	902381	ILLUMINATED RED ROCKER SWITCH	1	
30	219667	No6 X 1/2" LONG PLASTITE SCREW	6	TORQUE TO 1.6Nm ±1.5
31	911051	BACK SUPPORT MOULDING (WITHOUT MOUNTING FEATURE)	1	
32	912533	RUCKSACK HARNESS - RSB150/RSV150 (RED)	1	ALL OTHER VARIATIONS V53 ONLY
	912627	RUCKSACK HARNESS - RSB150/RSV150 (BLACK)	1	
33	206353	HARNESS PIN	1	
34	291152	NO8.1/2 INCH LG.T20.SCREW.Z/PL.PLASTITE	4	FOR 2x HARNESS PIN SCREWS ONLY: TORQUE TO 1.6Nm ±1.5 ALL OTHER SCREWS: TORQUE TO 2.6Nm ±1.5
35	902312	CABLE STRESS RELIEF	1	
36	911002	BACK SUPPORT INSERT	1	
37	219018	M8 SHAKEPROOF WASHER	2	
38	219658	M8 X 22MM LONG SOCKET BOLT	2	TORQUE TO 2.6Nm ±1.5
39	901647	H13 FILTER ASSEMBLY (HZ)	1	
40	911013	PRE-MOTOR FILTER BRACKET	1	
41	219045	M5 X 16MM LONG POZI PAN SEMS SCREW	2	
42	219005	M5 FORM G WASHER	2	
43	911290	CABLE CONNECTOR HOUSING	1	V81 ONLY
44	220007	BLACK CABLE TIE	2	V81 ONLY
45	910473	0.3MT X 1MM X 2CORE CABLE (NUC17S + PLUG) AUS+NZ PLUG	1	V81 ONLY
46	910477	15MT X 1MM X 3CORE EXTENSION CABLE AUS+NZ PLUG	1	V81 ONLY
47	910610	15MT X 1MM X 2CORE CABLE (NUC17S + PLUG) UK PLUG	1	V16 ONLY
	911347	15MT X 1MM X 2CORE CABLE (NUC17S + PLUG) EURO PLUG	1	V30 ONLY
	911346	15MT X 1MM X 2CORE CABLE (NUC17S + PLUG) SWISS PLUG	1	V53 ONLY
	912333	15MT X 1MM X 2CORE CABLE (NUC17S + PLUG) CSA PLUG	1	V69 ONLY
	910481	15MT X 1MM X 2CORE CABLE (NUC17S + PLUG) RSA PLUG	1	V83 ONLY
	911466	15MT X 1MM X 2CORE CABLE (NUC17S + PLUG) INDUSTRIAL PLUG	1	V37 ONLY

1

2

3

4

5

6

A

A

B

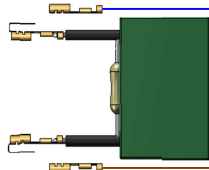
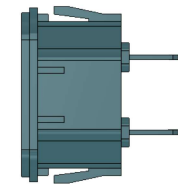
B

C

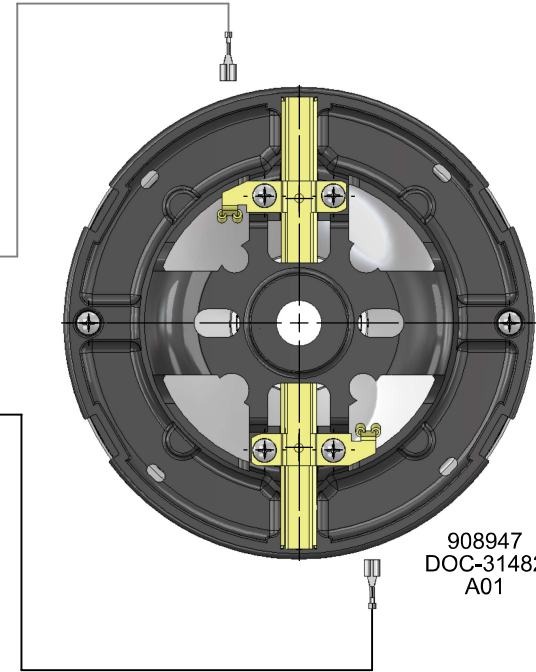
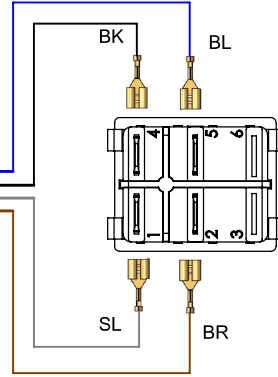
C

D

D



230136  
DRW-2439  
A01



BL

BR

SL

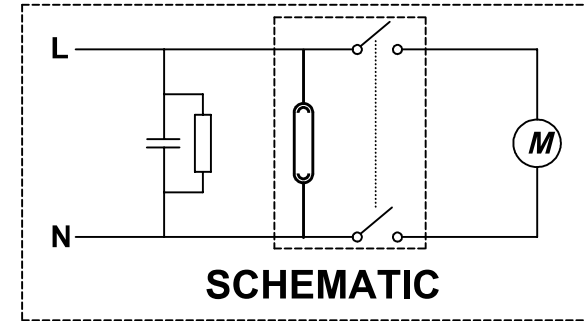
BK

BK

BL

SL

BR



KEY:  
Wire Colours: BK-Black, BR-Brown, SL-Slate, WH-White, BL-Blue, BR-Brown

PRINT SIZE  
**A3**  
NOT TO  
SCALE



Internal Code:

TITLE:

**WIRING**  
DIAGRAM.VACUUM.1S.2W.230.1SDAF.600.1.RS.PL  
G

1

2

3

4

5

6