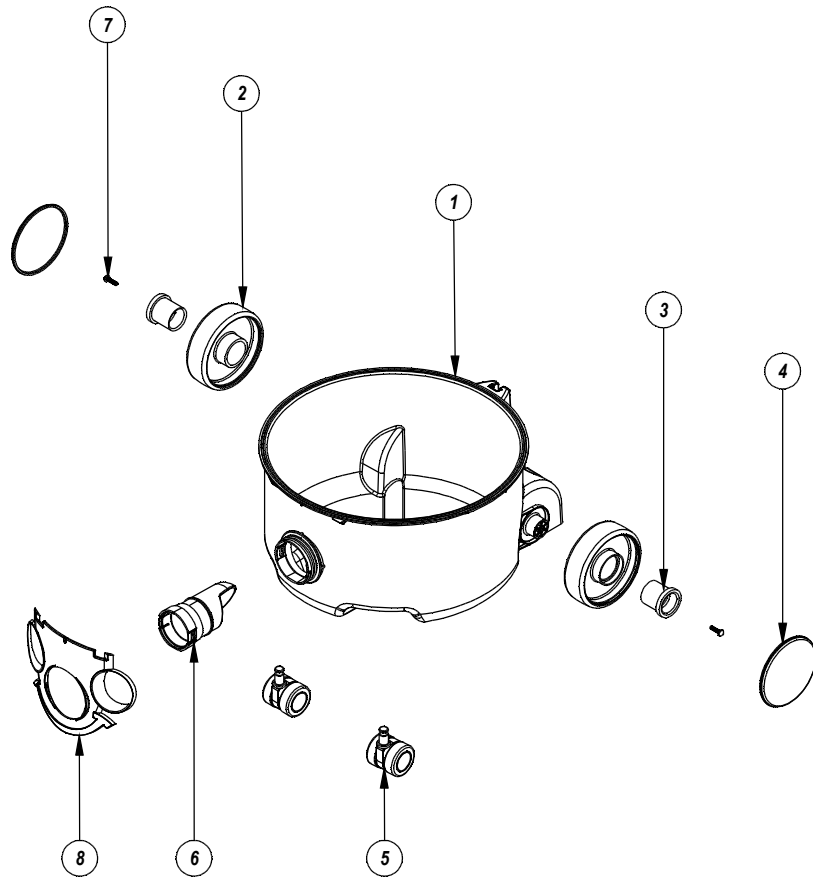


Numatic International Spare Parts**Model No:** DRUM STYLE 21 EXPLODED DRAWINGInternal Code: N/A
DRAWING: DRW-23951 ISS:A02
PRO 18/10/2017**Numatic International Spare Parts****Model No:** DRUM STYLE 21 EXPLODED DRAWING

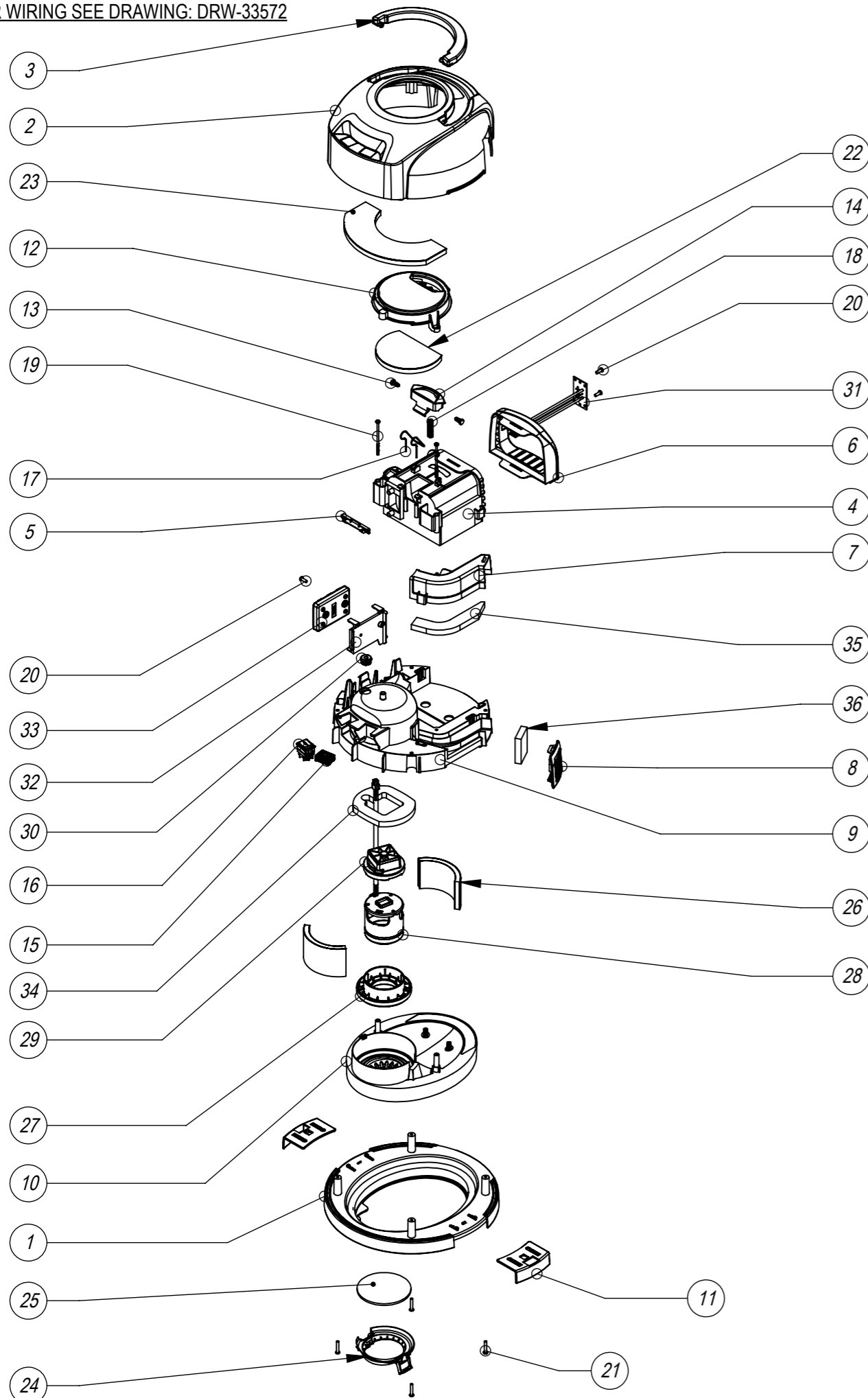
| POS. | ITEM NO. | DESCRIPTION | QTY. | COMMENTS |
|------|----------|---|------|-----------------------------|
| 1 | - | DRUM STYLE 21 - MOULDING | 1 | CONTACT NUMATIC FOR DETAILS |
| 2 | 227640 | 2 SHOT WHEEL ASSEMBLY | 2 | |
| 3 | 227868 | WHEEL HUB FOR 2 SHOT WHEEL | 2 | |
| 4 | - | WHEEL TRIM | 2 | CONTACT NUMATIC FOR DETAILS |
| 5 | 204000 | 40MM PU-TYRED BLACK TWIN WHEEL CASTOR | 2 | |
| 6 | 237119 | FRONT FIT BAG CONNECTOR | 1 | |
| 7 | 219105 | No8 X 5/8 INCH LONG POZI PAN PLASTITE SCREW | 2 | |
| 8 | - | PARALLEL SNAP FIT FACE PRINTED | 1 | CONTACT NUMATIC FOR DETAILS |

Numatic International Spare Parts

Model No: HEAD STYLE 19 - 12 INCH CORDLESS - BRUSHLESS MOTOR - 2-SPEED - EXPLODED ASSEMBLY

912109
DRAWING: DRW-33129 ISS:A05
07/04/2021

NB: FOR WIRING SEE DRAWING: DRW-33572



Numatic International Spare Parts

Model No: HEAD STYLE 19 - 12 INCH CORDLESS - BRUSHLESS MOTOR - 2-SPEED - EXPLODED ASSEMBLY

| ITEM NO. | Item_No | DESCRIPTION | QTY. | COMMENTS |
|----------|---------|--|------|--------------------|
| 1 | 326066 | HARD EDGE BOTTOM MOTOR HOUSING PROCESSED FOR NBV BATTERY VAC | 1 | |
| 2 | 326092 | PVR COVER + HANDLE PROCESSED FOR NBV BATTERY VAC | 1 | |
| 3 | 227120 | HANDLE - HVR/HET/NRV | 1 | |
| 4 | 912066 | BATTERY POD | 1 | |
| 5 | 237641 | BATTERY RELEASE SPRING RETAINER | 1 | |
| 6 | 237602 | NBV BATTERY POD FASCIA (BLACK) | 1 | |
| 7 | 912090 | NBV EXHAUST DUCT | 1 | |
| 8 | 237640 | EXHAUST AIR DUCT FASCIA | 1 | |
| 9 | 912067 | NBV MOTOR HOUSING | 1 | |
| 10 | 237599 | NBV MOTOR ADAPTOR | 1 | |
| 11 | 237115 | NRV HARD EDGE TOGGLE | 2 | |
| 12 | 237603 | NBV REELER CAP | 1 | |
| 13 | 237597 | BATTERY RELEASE TOGGLE - HINGE PIN | 2 | |
| 14 | 237604 | NBV BATTERY RELEASE CATCH (RED) | 1 | |
| 15 | 903030 | LED BATTERY LIFE INDICATOR WITH PCB | 1 | |
| 16 | 903963 | SWITCH.DPDT.RKR.HV | 1 | |
| 17 | 216655 | BATTERY RELEASE SPRING | 1 | |
| 18 | 216465 | 11MM COIL SPRING | 1 | |
| 19 | 291049 | No8 X 2.95 TX-PN-PLAST SCREW (ZINC PLATED) | 2 | |
| 20 | 291152 | NO8.1/2 INCH LG.T20.SCREW.Z/PL.PLASTITE | 3 | |
| 21 | 291082 | #8 SCREW 1"L T20 PAN HEAD P/L THREAD FORMING | 4 | |
| 22 | 303034 | BATTERY RELEASE ACOUSTIC BARRIER | 1 | LATER MODEL 3/5/21 |
| 23 | 203035 | BATTERY VAC COVER ACCOUSTIC BARRIER | 1 | LATER MODEL 3/5/21 |
| 24 | 203036 | FILTER LOCKING CAP | 1 | LATER MODEL 3/5/21 |
| 25 | 209086 | NBV PRE-MOTOR FILTER | 1 | LATER MODEL 3/5/21 |
| 26 | 203033 | NBV MOTOR ACCOUSTIC BARRIER INSTALLED POSITION | 2 | LATER MODEL 3/5/21 |
| 27 | 911904 | NBV MOTOR GASKET | 1 | |
| 28 | 911895 | SIP CINDERSON 74MM 36V MOTOR (350W/200W) | 1 | |
| 29 | 911906 | NBV MOTOR TOP MOUNT | 1 | |
| 30 | 911088 | WIRE GROMMET | 1 | |
| 31 | 912057 | NX CONNECTING PCB | 1 | |
| 32 | 912056 | NBV PCB MOUNT | 1 | |
| 33 | 910251 | CORDLESS RUCKSACK PCB ASSEMBLY | 1 | |
| 34 | 912058 | MOTOR POD TOP FOAM | 1 | |
| 35 | 911836 | NBV EXHAUST FOAM | 1 | |
| 36 | 912059 | NBV EXHAUST FELT | 1 | LATER MODEL 3/5/21 |