

Numatic International Spare Parts

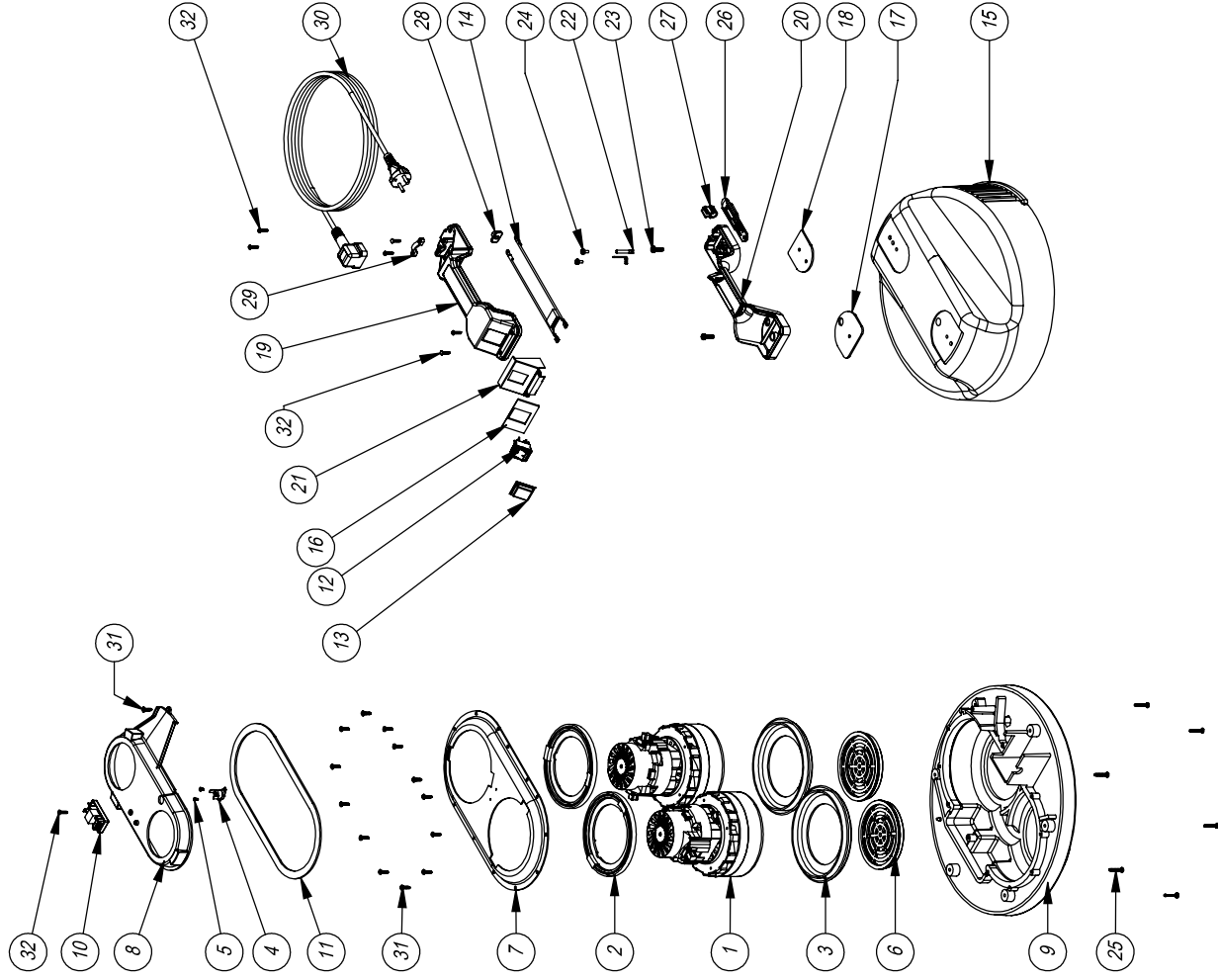
Model No: HEAD STYLE 39 WVD EXPLODED DRAWING

NB: FOR WIRING SEE DRAWING. PLEASE REFER TO NUMATIC WEBSITE

Internal Code:

PRO

N/A
DRAWING: DRW-24329 ISS-A19
05/07/2018



Numatic International Spare Parts

Model No: HEAD STYLE 39 WVD EXPLODED DRAWING

POS.	ITEM NUMBER	DESCRIPTION	QTY.	COMMENTS:
1	205411	240V 2 STAGE D.I BYPASS ACUSTEK MOTOR (BL21104)(MARKED 230V)	2	
2	227925	TOP MOTOR GASKET	2	
3	202005	MOTOR BOTTOM GASKET	2	
4	220532	THERMOSTAT	1	
5	219491	M3 X 5MM LONG POZI PAN TAPTITE SCREW	2	
6	206010	FAN GUARD	2	
7	225168	TOP MOTOR HOUSING	1	
8	227928	570 AIR SEPARATOR (LAMB BYPASS MOTOR DUPLEX)	1	
9	301048	PROCESSED BOTTOM MOTOR HOUSING	1	
10	906039	DELAY RL PCB [PCB-1336]	1	
11	202012	GASKET	1	
12	220843	BLUE ROCKER SWITCH	1	
13	206573	SWITCH COVER (PLUG HANDLE)	1	
14	230151	220V DUPLEX SUPPRESSOR ASSY AMETEK MOTOR	1	
15	227043	COVER MOULDING DOUBLE GRILL WITH INSERTS	1	
16	208706	SINGLE SWITCH HANDLE SEALING GASKET	1	
17	904660	HANDLE GASKET (LARGE)	1	
18	904666	HANDLE GASKET (SMALL)	1	
19	904814	HANDLE COVER 1-SWITCH 2 POLE 16A	1	
20	904816	HANDLE COVER 1-SWITCH 2 POLE 10A	1	V80 ONLY
21	904996	HANDLE BASE 2 INSERTS	1	
22	227635	SWITCH MOUNTING BRACKET (1 SWITCH)	1	
23	206562	CONTACT PIN	2	
24	219546	M5 X 20MM LONG POZI PAN SEMS SCREW	2	
25	291151	M4 X 10MM LONG T20 SEMS SCREW Z/P/L - PRODUCT CODE 8.8 - TX20 HEAD	2	
26	219369	Nø8 X 1 INCH LONG POZI PAN STAINLESS STEEL PLASTITE SCREW	6	
27	227636	STRAIN RELIEF	1	
28	227637	CABLE CLIP	1	
29	904790	HANDLE REAR SEAL	1	
30	216290	CABLE CLAMP	1	
31	227564	PLUG LOCATION CLAMP	1	V80 ONLY
32	236144	10.0MT X 1.5MM X 2 CORE YELLOW CABLE (SOCKET + PLUG) EURO	1	V30 ONLY
	236146	10.0MT X 1.5MM X 2 CORE CABLE (SOCKET + PLUG) UK	1	V80 ONLY
	236147	10.0MT X 1.5MM X 2 CORE CABLE (SOCKET + PLUG) SWISS	1	V53 ONLY
	236149	10.0MT X 1.5MM X 2 CORE CABLE (SOCKET + PLUG) SOUTH AFRICA	1	V83 ONLY
31	219370	Nø8 X 5/8 INCH LONG PLASTITE STAINLESS STEEL SCREW	14	
32	219107	Nø6.5/8 INCH LG.POZI PAN.SCREW.Z/P/L.PLASTITE	7	